

Date: Wednesday, 12 February 2025
Time: 10.30 am
Meeting Room: Waiheke Local Board Office
Venue: 10 Belgium St
Ostend
Waiheke Island

Waiheke Local Board Workshop OPEN AGENDA

MEMBERSHIP

Chairperson	Cath Handley
Deputy Chairperson	Kylee Mathews
Members	Bianca Ranson Robin Tucker Paul Walden

**Amelia Lawley
Democracy Advisor**

31 January 2025

Contact Telephone: 027 261 8595
Email: amelia.lawley@aucklandcouncil.govt.nz
Website: www.aucklandcouncil.govt.nz

Email Waihekelocalboard@aucklandcouncil.govt.nz for the link to observe the workshop online.

The workshop will be recorded and the link included in the proceedings which can be found at <https://infocouncil.aucklandcouncil.govt.nz/>

ITEM	TABLE OF CONTENTS	PAGE
1	Ngā Tamōtanga Apologies	2
2	Te Whakapuaki i te Whai Pānga Declaration of Interest	2
3	Local Board Workshop	3

Karakia Timatanga – Whakataka te Hau

Whakataka te hau ki te uru	Cease oh winds of the west and the south
Whakataka te hau ki te tonga	Let the bracing breezes flow
Kia mākinakina ki uta	over the land and the sea
Kia mātaratara ki tai	Let the red-tipped dawn come
E hī ake ana te atakura	with a sharpened edge
He tio, he huka, he hauhū	a touch of frost
Tihei Mauri Ora!	A promise of a glorious day!

Agenda Items

1 Ngā Tamōtanga | Apologies

Member B Ranson.

2 Te Whakapuaki i te Whai Pānga | Declaration of Interest

Members are reminded of the need to be vigilant to stand aside from decision making when a conflict arises between their role as a member and any private or other external interest they might have.

Local Board Workshop

File No.: CP2025/00240

Note 1: This workshop has been called by the chairperson in consultation with the staff.

Note 2: No working party/workshop may reach any decision or adopt any resolution unless specifically delegated to do so.

Te take mō te pūrongo Purpose of the report

1. To present the Waiheke Local Board workshop agenda for 12 February 2025.

Whakarāpopototanga matua Executive summary

2. Most workshops are open to the public to attend as observers in person or online.
3. Some sessions may not be open to the public. The staff / chairperson and deputy chairperson decide which sessions are open to the public, depending on the sensitivity of the information being discussed. If a session is not open, a reason will be provided below.
4. Workshops will be recorded and a link to the recording will be included in the published documents available at <https://infocouncil.aucklandcouncil.govt.nz/>
Email Waihekelocalboard@aucklandcouncil.govt.nz for an MS Teams link to **observe** the workshop online.
5. Local Board workshops provide an opportunity for local boards to carry out their governance role in the following areas:
 - a) Accountability to the public
 - b) Engagement
 - c) Input to regional decision-making
 - d) Keeping informed
 - e) Local initiative / preparing for specific decisions
 - f) Oversight and monitoring
 - g) Setting direction / priorities / budget.
6. Workshops do not have decision-making authority.
7. Workshops are used to canvass issues, prepare local board members for upcoming decisions and to enable discussion between elected members and staff <Enter summary>
8. Members are respectfully reminded of their Code of Conduct obligations with respect to conflicts of interest and confidentiality.
9. The following will be covered in the workshop:

Session 1 – 10.30am – 11.30am	
Auckland Transport monthly update	
Presenters	Richard LaVille – AT Manager, Waiheke
Purpose:	Review progress with projects
Governance Role:	Keeping informed
Proposed Outcome:	Members will be updated on various projects across the island.
Attachment:	Attachment A (see below)
Session 2 – 11.30am – 12.30pm	
Waiheke Art Gallery update	
Presenters:	Fiona Gregory – Community Broker Yoojung Suh – Place and Partner Specialist, Community Delivery Fiona Blanchard – Director, Waiheke Art Gallery Dr Kriselle Baker – Co-Chair, Waiheke Art Gallery Committee
Purpose:	Informal dissemination
Governance Role:	Keeping informed
Proposed Outcome:	Members will receive an update on the Waiheke Art Gallery’s vision and direction for 2025.
Attachment:	Attachment B (see below)
LUNCH	
Session 3 – 1.00pm – 1.30pm	
Waiheke Climate Action Activator update	
Presenters:	Kartik Bhat – Relationship Advisor, Resilience and Infrastructure Rory Lenihan-Ikin – Low Carbon Specialist, Sustainability Initiatives Kristin Busher – Partnerships Manager, Waiheke Resources Trust Mike Maahs – CEO, Waiheke Resources Trust
Purpose:	Receive update on progress
Governance Role:	Keeping informed
Proposed Outcome:	Members will be updated on the WCAA work programme delivered by Waiheke Resources Trust
Attachment:	Attachment C (see below)
Session 4 – 1.30pm – 2.30pm	
Onetangi Sports Park helipad update	
Presenters:	Jenean de Bruin – Programme Manager, Parks and Community Facilities Shane Hogg – Manager Area Operations, Parks and Community Facilities Simon Lockie – Principal Consultant, Lockie Airport Management

Purpose:	Provide direction on preferred approach
Governance Role:	Keeping informed
Proposed Outcome:	Members will be updated on the helipad status and provide direction on options for next steps.
Attachment:	Attachment D (see below)
Session 5 – 2.30pm – 3.30pm	
Waiheke Local Board Fairer Funding Allocation discussion	
Presenters:	Jestine Joseph – Programme Implementation Lead, Service Investment and Planning John Nash – Programme Manager, Planning and Operations Angela Clarke – Head of Service Investment and Programming Shane Hogg – Manager Area Operations, Parks and Community Facilities
Purpose:	Receive update on progress
Governance Role:	Keeping informed
Proposed Outcome:	Members and staff will discuss funding allocation for local community services
Attachment:	Attachment E (see below)

Ngā tāpirihanga Attachments

No.	Title	Page
A	AT update 12 February 2025	7
B	Waiheke Community Art gallery update February 2025	15
C	Waiheke Resources Trust - A Waiheke Fund presentation	41
D	Onetangi Sports Park helipad presentation	49
E	Waiheke Local Board Fairer Funding Allocation presentation	63

Memorandum



To: Waiheke Local Board
From: Richard La Ville, Operations Manager Waiheke & Gulf Islands Airfields
Alex Elton-Farr, Elected Member Relationship Partner
Date: 12 February 2025
Subject: **AT monthly update 10.30am – 11.30am**

Auckland Transport operations and projects update

Activity	New updates
1. General update	<ol style="list-style-type: none">1. Waikare Rd bus stop closure2. Belle Terrace directional signage upgrade3. Matiatia carpark surface upgrades4. LBTCF – Cycleway.5. Esplanade
2. Seawall repairs update	Surfdale/Huruhi Bay and Omiha/Kauakarau Bay.
3. Alex – in Mangere workshop – Apologies.	<ol style="list-style-type: none">1. Cycleway – details above2. Esplanade engagement details above.



Memorandum

Waikare Rd, Oneroa



Memorandum

Item 3

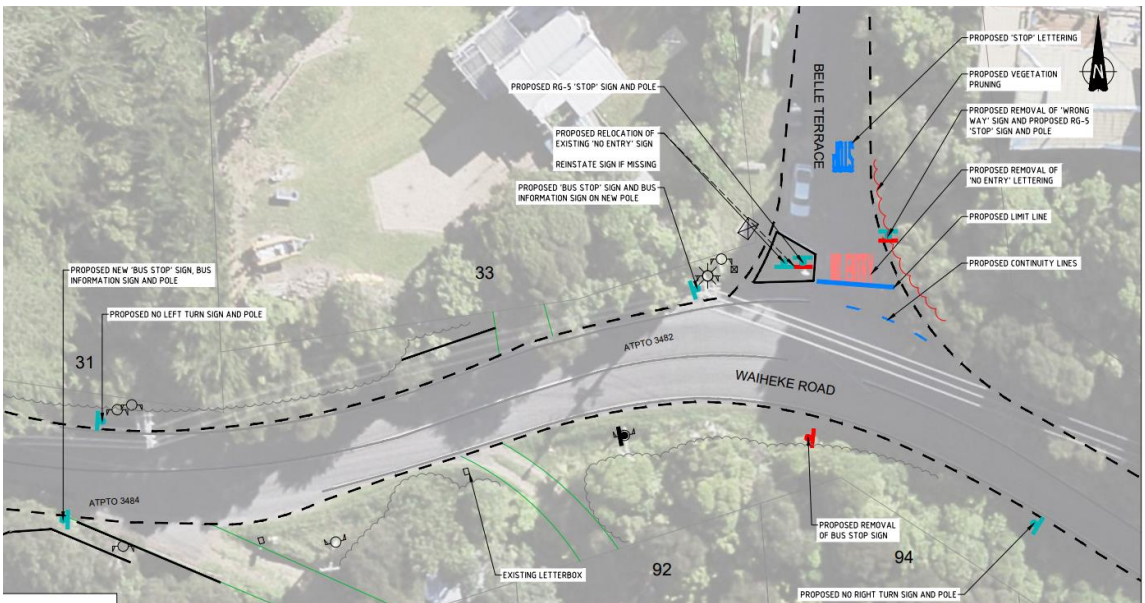


Attachment A



Memorandum

Belle Terrace, Onetangi



Memorandum



LBTCF – Cycleway

The public consultation has now been closed out, with a slight revision to the design (particularly around the Miami Ave-Mitchell Rd corner) following detailed design progression. Attached is the final plan that will be placed on the website.

We are currently in progress of getting the Traffic Resolution report completed, procuring contractor, and liaison of this work with the resurfacing maintenance works planned for that area.

If all goes well, we are targeting this to be delivered around early April following the completion of resurfacing works. We are hoping to put in a report for the March Business Meeting with the resolution to from the board to go ahead with the project. Included in report appendices will be the full consultation report for the board’s consideration.



Item 3

Attachment A



Memorandum



Memorandum



Esplanade

The public consultation is now closed. Our next steps are to contact affected stakeholders to gain additional information. This information will determine our next steps and a path forward with any chosen detailed design.

Following this, we will present our feedback report to the local board along with our recommendations on how the project will progress. Once these stages are completed, we'll be in a position to provide the board with a timeline to completion.





Waiheke Community Art Gallery Update

Waiheke Local Board – 12 February 2025

Fiona Blanchard – Director, Waiheke Community Art Gallery
Yoojung Suh – Place & Partner Specialist (Arts), Central/East

Purpose

- Update the local board on the strategic direction, and programmes and services delivered by Waiheke Community Art Gallery, following the appointment of a new Director in 2022.





Waiheke Community Art Gallery (WCAG)

Purpose:
Connecting people
through art

Mission:
Foster & promote
Waiheke as a
creative island

Introduction and Overview

- Established as an Incorporated Society in 1995
- September 2025 is ~~our~~ 30th anniversary
- 57,560 visitors in 2024
- 550 members (largest member group on Waiheke)
- \$300,000+ paid to artists annually
- \$200,000+ paid to suppliers annually
- 4,380 gallery volunteer hours in 2024
- 2,212 Sculpture on the Gulf volunteer hours in 2024.



Strategic alignment with Waiheke Local Board Plan 2023



Strategic alignment

Waiheke Local Board Plan 2023	Waiheke Community Art Gallery Strategic Priorities
<p>Our People</p> <p>Waiheke residents have a strong sense of <i>identity, connectedness and wellbeing</i> which is enhanced through active community participation.</p>	<p>Celebrate Waiheke’s unique identity</p> <ul style="list-style-type: none"> • Be a leader and platform for local creative practice. • Be the cultural gateway for visitors to the motu.
	<p>Partnerships</p> <p>Foster enduring partnerships</p>
	<p>Build creative sector alignment and capability</p> <ul style="list-style-type: none"> • Create a <i>whare wananga</i> for the arts on Waiheke. • Develop collaborative projects with other cultural providers and institutions.

Foster enduring partnerships Mana Whenua engagement



Celebrate Waiheke's unique identity

WAIHEKE ART MAP

- Art Map produced by Gallery since 2014
- Move to sustainable and digital format in 2025
- WINTER OPEN STUDIOS
- King's Birthday 2025



Build creative sector alignment and capability



Summer Exhibitions

Evan Woodruffe <i>Brain-Colour</i> Russell Jackson & Jane Simcock <i>Brush</i> OPENING: Friday 10 January, 6pm SHOWING UNTIL: Sunday 9 February	Squigglia <i>Making Space</i> 10 - 22 January	Works from <i>the Art Map</i> 24 January to 9 February
--	---	--

IN COLLABORATION WITH PAULNACHE TURANGANUI-A-KIWA, | **CHART WELL** | **Squigglia**™ | **Waiheke Local Board** Auckland Council | **POSTAGE STAMP WAIHEKE ISLAND**

PAU LIA CHE | GENEROUSLY SUPPORTED BY **WAIHEKE LOCAL BOARD** | **WAIHEKE ISLAND**

OPEN 7 DAYS, 10AM-4PM, 2 KORORA RD, ONEROA. waihekeartgallery.org.nz



