

Date: Wednesday 12 February 2025
Time: 10.30 am
Meeting Room: Waiheke Local Board Office
Venue: 10 Belgium St
Ostend
Waiheke Island

Waiheke Local Board Workshop

OPEN NOTES ATTACHMENTS

ITEM	TABLE OF CONTENTS	PAGE
3	Local Board Workshop	
A.	AT update 12 February 2025	3
B.	Waiheke Community Art Gallery update February 2025	11
C.	Waiheke Resources Trust - A Waiheke Fund presentation	37
D.	Onetangi Sports Park helipad presentation	45
E.	Waiheke Local Board Fairer Funding Allocation presentation	59

Memorandum



To: Waiheke Local Board
From: Richard La Ville, Operations Manager Waiheke & Gulf Islands Airfields
Alex Elton-Farr, Elected Member Relationship Partner
Date: 12 February 2025
Subject: **AT monthly update 10.30am – 11.30am**

Auckland Transport operations and projects update

Activity	New updates
1. General update	<ol style="list-style-type: none">1. Waikare Rd bus stop closure2. Belle Terrace directional signage upgrade3. Matiatia carpark surface upgrades4. LBTCF – Cycleway.5. Esplanade
2. Seawall repairs update	Surfdale/Huruhi Bay and Omiha/Kauakarau Bay.
3. Alex – in Mangere workshop – Apologies.	<ol style="list-style-type: none">1. Cycleway – details above2. Esplanade engagement details above.

Item 3

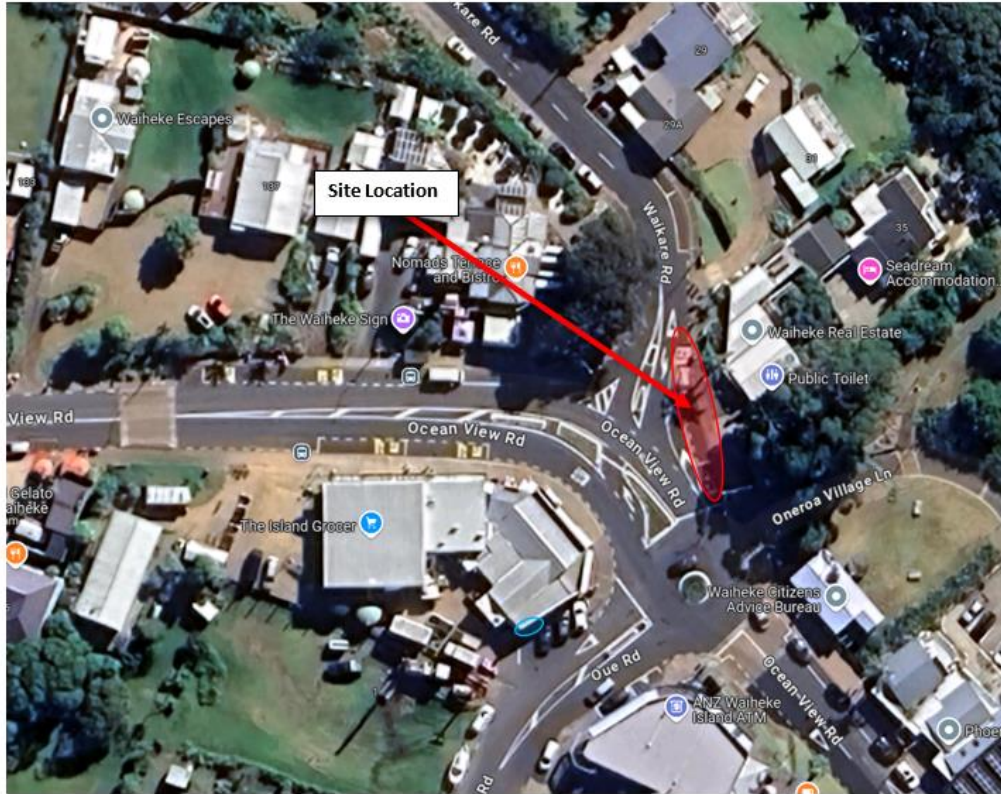
Attachment A



Memorandum



Waikare Rd, Oneroa

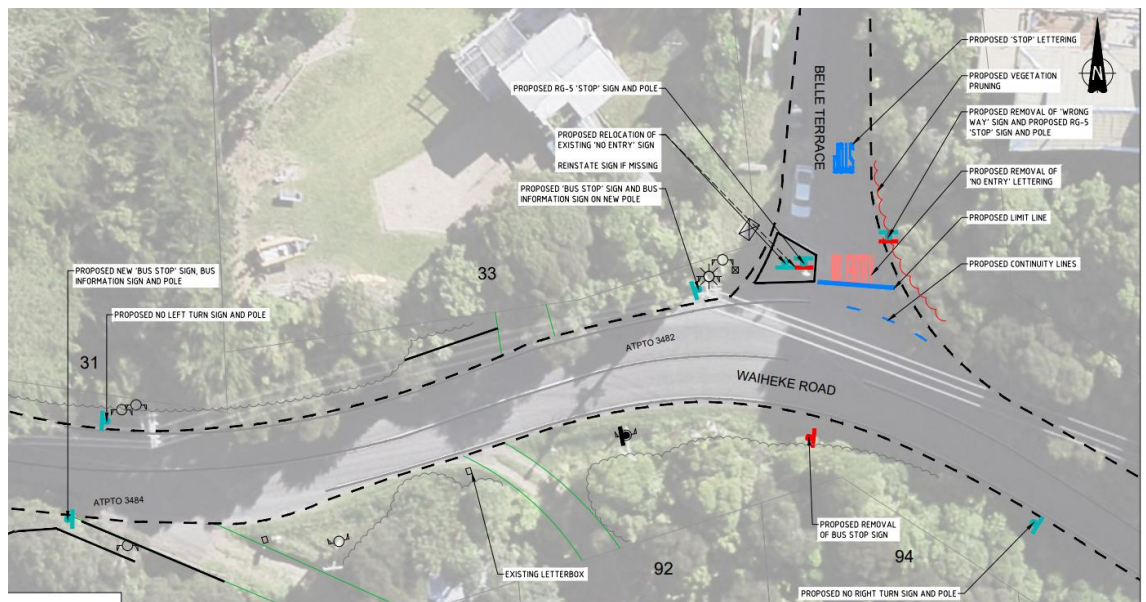


Memorandum



Memorandum

Belle Terrace, Onetangi



Memorandum

LBTCF – Cycleway

The public consultation has now been closed out, with a slight revision to the design (particularly around the Miami Ave-Mitchell Rd corner) following detailed design progression. Attached is the final plan that will be placed on the website.

We are currently in progress of getting the Traffic Resolution report completed, procuring contractor, and liaison of this work with the resurfacing maintenance works planned for that area.

If all goes well, we are targeting this to be delivered around early April following the completion of resurfacing works. We are hoping to put in a report for the March Business Meeting with the resolution to from the board to go ahead with the project. Included in report appendices will be the full consultation report for the board's consideration.



Item 3

Attachment A



Memorandum



Memorandum



Item 3



Attachment A

Esplanade

The public consultation is now closed. Our next steps are to contact affected stakeholders to gain additional information. This information will determine our next steps and a path forward with any chosen detailed design.

Following this, we will present our feedback report to the local board along with our recommendations on how the project will progress. Once these stages are completed, we'll be in a position to provide the board with a timeline to completion.





Waiheke Community Art Gallery Update

Waiheke Local Board – 12 February 2025

Fiona Blanchard – Director, Waiheke Community Art Gallery
Yoojung Suh – Place & Partner Specialist (Arts), Central/East



Purpose

- Update the local board on the strategic direction, and programmes and services delivered by Waiheke Community Art Gallery, following the appointment of a new Director in 2022.



Waiheke Community Art Gallery (WCAG)

Purpose:
Connecting people
through art

Mission:
Foster & promote
Waiheke as a
creative island

Introduction and Overview

- Established as an Incorporated Society in 1995
- September 2025 is ~~our~~ 30th anniversary
- 57,560 visitors in 2024
- 550 members (largest member group on Waiheke)
- \$300,000+ paid to artists annually
- \$200,000+ paid to suppliers annually
- 4,380 gallery volunteer hours in 2024
- 2,212 Sculpture on the Gulf volunteer hours in 2024.





Strategic alignment

Waiheke Local Board Plan 2023	Waiheke Community Art Gallery Strategic Priorities
<p>Our People</p> <p>Waiheke residents have a strong sense of <i>identity, connectedness</i> and <i>wellbeing</i> which is enhanced through active community participation.</p>	<p>Celebrate Waiheke’s unique identity</p> <ul style="list-style-type: none"> • Be a leader and platform for local creative practice. • Be the cultural gateway for visitors to the motu.
	<p>Partnerships</p> <p>Foster enduring partnerships</p>
	<p>Build creative sector alignment and capability</p> <ul style="list-style-type: none"> • Create a whare wananga for the arts on Waiheke. • Develop collaborative projects with other cultural providers and institutions.

Foster enduring partnerships Mana Whenua engagement



Celebrate Waiheke's unique identity



WAIHEKE ART MAP

- Art Map produced by Gallery since 2014
- Move to sustainable and digital format in 2025
- WINTER OPEN STUDIOS
- King's Birthday 2025

Build creative sector alignment and capability



Summer Exhibitions

Evan Woodruffe <i>Brain-Colour</i> Russell Jackson & Jane Simcock <i>Brush</i>	Squiggla <i>Making Space</i> 10 - 22 January	Works from <i>the Art Map</i> 24 January to 9 February
---	--	--

OPENING: Friday 10 January, 6pm
SHOWING UNTIL: Sunday 9 February

IN COLLABORATION WITH PAULNACHE TURANGANUI-A-KIWA, GIBBORNE | **CHARTWELL** | **Squiggla™** | **Waiheke Local Board** | **POSTAGE STAMP WAIHEKE ISLAND**

GENEROUSLY SUPPORTED BY

PAU LANA LAWA CHE | **Waihekeartgallery.org.nz**



