

Date: Tuesday 25 February 2025
Time: 10:30 am
Meeting Room: Local Board Office
Venue: Online via Microsoft Teams

Maungakiekie-Tāmaki Local Board Workshop

OPEN MINUTE NOTES ATTACHMENTS

ITEM	TABLE OF CONTENTS	PAGE
5	Local Board Workshop	
	A. Item 3: Tāmaki Reserves development updates presentation	3
	B. Item 3A: John Reserve detailed concept	23

Parks and Community Facilities

Tāmaki Reserves Development Update: Concept Plans and Consultation

21 February 2025

Vandna Kirmani – Programme Manager
Eva Wallace – Project Manager
Mark Simento – Project Manager
Marcel Morgen – Manager Area Operations,

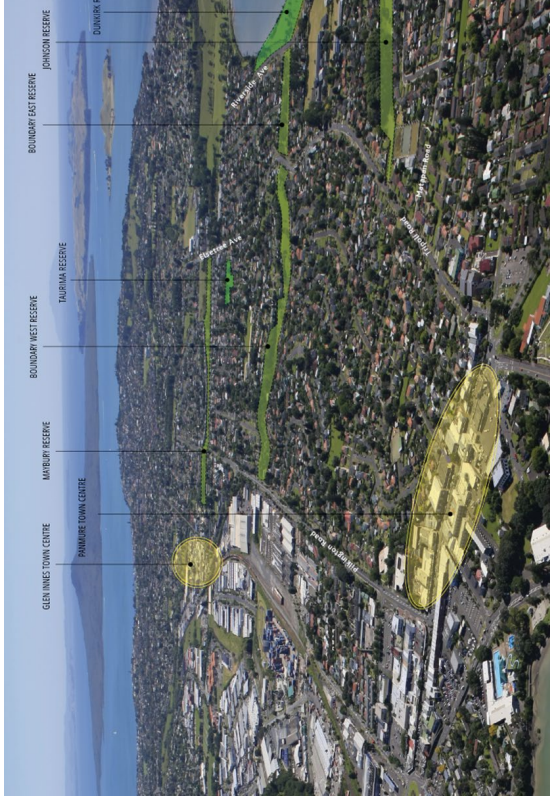




Project Background

Tāmaki Regeneration Programme

- A collaboration between Te Kaunihera o Tāmaki Makaurau / Auckland Council, Tāmaki Regeneration Company (TRC), and Kāinga Ora (KO).
- Focuses on developing a sustainable Tāmaki for future generations, prioritising quality homes, resilient infrastructure, and safe and engaging parks,
- Today's draft concepts for parks development are drawn from:
 - Tāmaki Reserves Open Space Network Plan
 - Kāinga Ora Master Plans
 - Consultation via Social Pinpoint by TRC and KO
 - Information from the Reserve Management Plans and Greenways Plans
- Principals of partnership: Working closely with TRC, KO, AT, Healthy Waters, and Watercare using a dig-once approach.





Purpose

- To provide an overview of the proposed concept plans for:
 - Johnson Reserve
 - Taurima Reserve
 - Elstree North Reserve
- To seek your input on the proposed public consultation process, ensuring community engagement and alignment with local aspirations

Next steps

- Continue to partner with stakeholders and local iwi, incorporating their views and aspirations for the reserve.
- Further workshop with the local board in May 2025 after engagement and prepare a business report for the adoption of the final concept plans.





Allocated Budget

Project ID	Activity Name	Activity Description	Budget source	Current and prior year actuals	Budget (FY26)	Budget (FY27)	Total Budget
24134	Johnson Reserve - upgrade neighbourhood park	Upgrade the neighbourhood park to meet the needs of new and future residents within the Tāmaki Regeneration area. Works may include a playground, greenways priority paths and lighting, bridge stream crossings and improved connections between Tripoli and Dunkirk Roads.	ABS: Capex – Growth (regional)	\$224,962	\$904,854	\$1,250,000	\$2,379,816
24239	Taurima Reserve - redevelop park playspace	Redevelop the playground to meet the needs of new and future residents within the Tāmaki Regeneration area.	ABS: Capex – Growth (regional)	\$198,852	\$483,839	-	\$682,691
24239	Elstree North Reserve -	Develop neighbourhood park as part of the Tāmaki Regeneration priority projects, based on investigation, concept plan, and design as per consultation.	ABS: Capex – Growth (regional)	\$0	\$120,000	\$480,000	\$600,000



Engagement Style

Project	Engagement level	Engagement Activities
Johnson Reserve - Upgrade Neighbourhood Park	Consult	We're working closely with project partners to find creative solutions, carefully considering both opportunities and challenges. We're also talking with stakeholders, matawaka, and the wider community to get their feedback on the draft concept plan. We'll share the project's background, what we've heard so far, and the plan's key ideas.
Taurima Reserve - Redevelop Park Playspace	Inform	We're developing a full communication plan to make sure the community knows about project updates, timelines, and key dates. We'll be using a mix of channels, including local board social media, signs at the site, TRC, and local community centres and groups, to get the information out there.
Elstree North Reserve – Develop Neighbourhood Park	Consult	We're engaging with specific community groups and our neighbours to gather the most relevant feedback and keep the project on schedule. It's important that we all have a shared understanding of what the project aims to deliver and the limitations we face, so we're working closely with everyone to ensure this clarity.





Project Timeline for all projects



February - May 2025
Confirming the project scope and gathering community feedback.

May - August 2025
Finalising plans and obtaining necessary approvals.

September - October 2025
Tendering for contractors and securing resources and equipment

February 2026
Sharing updates and delivering the projects for the community





Concept Plan: Johnson Reserve Development



Devonport-Takapuna
Local Board
Auckland Council



Progress to date

Project initiated in 2023

November 2023: Workshop held to discuss site constraints and initial concepts with Healthy Waters.

July 2024: Draft concept presented, incorporating Healthy Waters scope of works and future-proofing for housing development in Tāmaki Regeneration's Panmure North Neighbourhood.

Land exchange: Public notification complete, report being drafted to seek local board decision on progressing land exchange.

Concept plan updated: Specialist advice from ecologists and arborists incorporated. Details added regarding development on neighbouring Kāinga Ora sites to ensure no cross-overs.





Updated Concept Plan



ISSUED FOR REVIEW

JOHNSON RESERVE
Panmure, Auckland 1072

Auckland Council
Te Kaitiaki o Tamaki Makaurau

DRAWING LIST

Drawings	Description
10001	Site context
10002	Site location
10003	Concept Development Plan Sheet 1
10004	Concept Development Plan Sheet 2
10005	Regulation Management Plan Sheet 1
10006	Regulation Management Plan Sheet 2
10007	Landmarks and Infrastructure Sheet 1
10008	Landmarks and Infrastructure Sheet 2

REV B: REVIEW

Concepts attached as supplementary PDF





Maungakiekie-Tāmaki
Local Board
Auckland Council



Taurima Reserve Today

Features:

- Large grassed areas,
- Mature trees,
- Narrow paths,
- Seating and bins.
- Playground and basketball half-court

Issues:

- Outdated equipment
- Lack of accessibility
- Insufficient space for the growing community

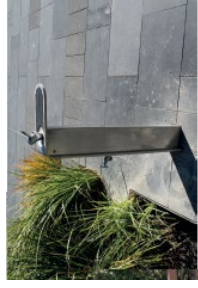
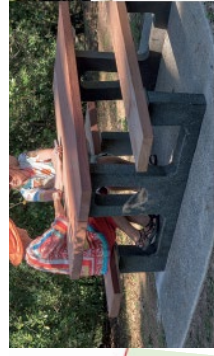




Proposed Concept Plan

Design Focus:

- **Accessibility:** The playground will be designed to be accessible for all ages and abilities, ensuring everyone can enjoy the space.
- **Natural Elements:** The design will incorporate natural elements and sustainable materials, creating a connection to the environment.
- **Play Zones:** Dedicated play zones for toddlers, children, and teens will cater to different age groups and interests.
- **Community Space:** The reserve will provide ample space for the community, including seating, shade, and landscaping for whānau and caregivers to relax and connect





PIUPUHEHU ZUIMUHY TIAI

Play Experiences:

Junior to Senior Play Zones: The reserve will offer dedicated play areas for different age groups, from toddlers to teens.

All-Ages Accessible Play: Accessible play elements will be incorporated throughout the reserve, ensuring everyone can participate.

Sensory and Nature Play: Opportunities for sensory and nature play will encourage exploration, creativity, and connection with the environment.

Basketball Half-Court: The basketball half-court will provide space for active recreation and social interaction.

Amenities:

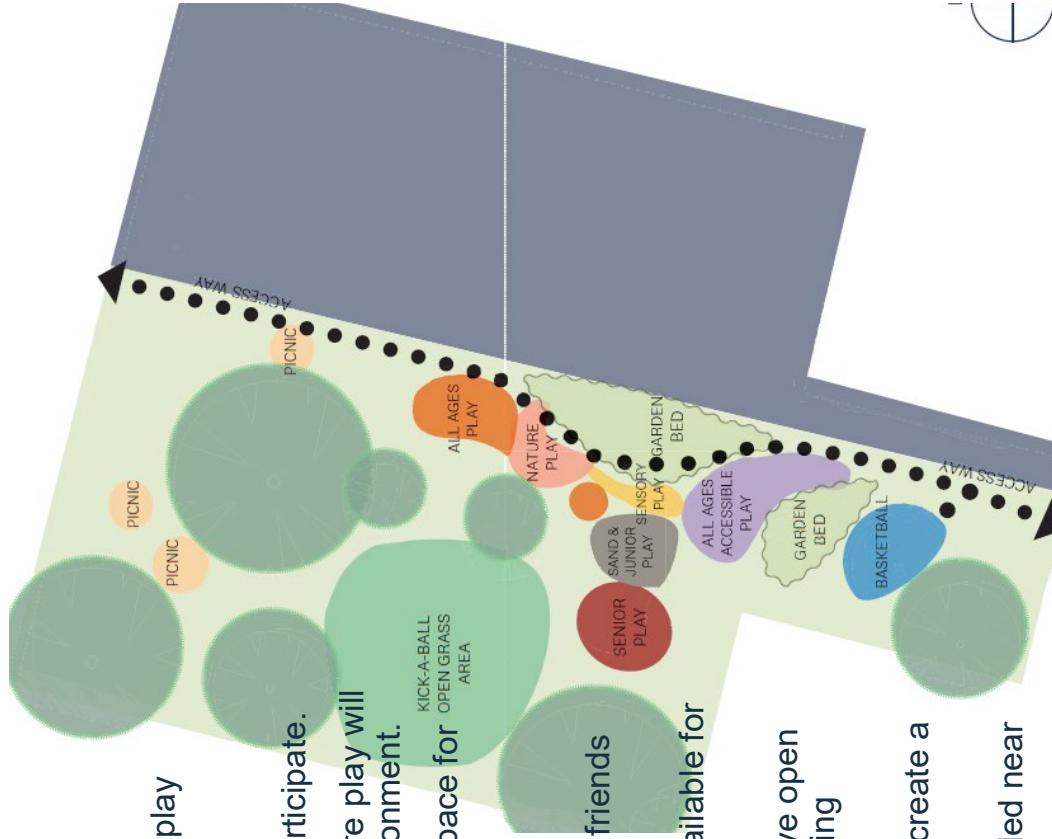
Picnic Area Under the Trees: Enjoy a picnic with whānau and friends under the shade of the trees.

Accessible Picnic Table: An accessible picnic table will be available for everyone to use.

Open Grass Area for Informal Activities: The reserve will have open grass areas for informal activities, such as kicking a ball or playing frisbee.

Garden Beds and Footpath: Garden beds and a footpath will create a buffer between the playground and neighbouring properties.

Bicycle Racks Near the Entrance: Bicycle racks will be provided near the entrance for cyclists.





Maungakiekie-Tāmaki
Local Board
 Auckland Council



Challenges and Opportunities

Elstree North Reserve Features:

Stream: A natural stream runs through the reserve, offering potential for ecological restoration and recreation.

Community Building: An unused community building presents an opportunity for repurposing to serve community needs.

Playground: The existing playground requires upgrades to improve safety, accessibility, and play value.

Basketball Court: The well-used basketball court needs resurfacing to ensure safe and enjoyable play.

Challenges:

Playground Equipment: Outdated and inaccessible equipment limits play opportunities for children of all abilities.

Stream Planting: Inadequate stream planting contributes to erosion and water quality issues.

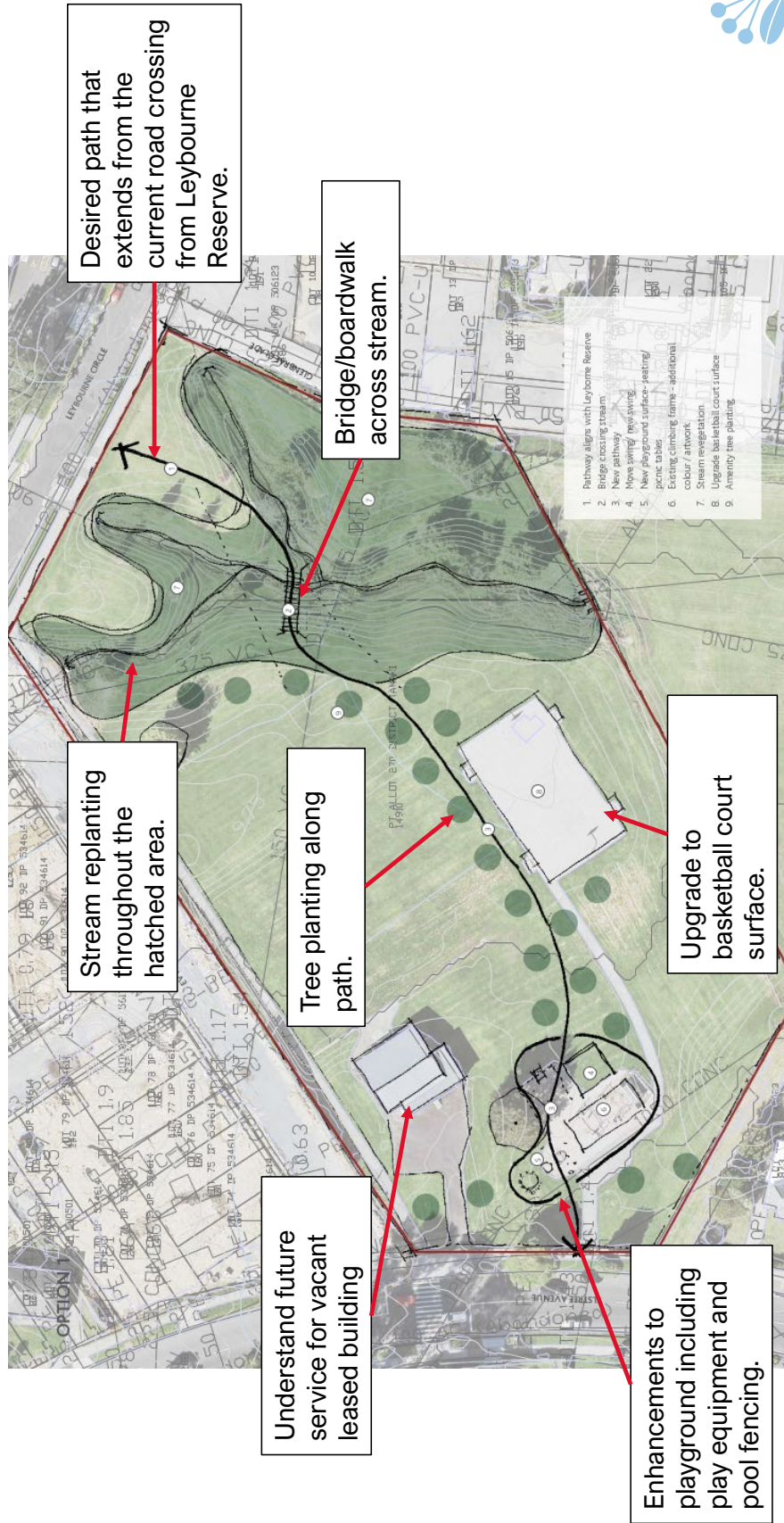
Basketball Court : The court surface is in need of renewal and No suitable footpath to the basketball court to ensure accessible play.

Footpath Access: No suitable footpath connections through the park from the north and east which limits accessibility.



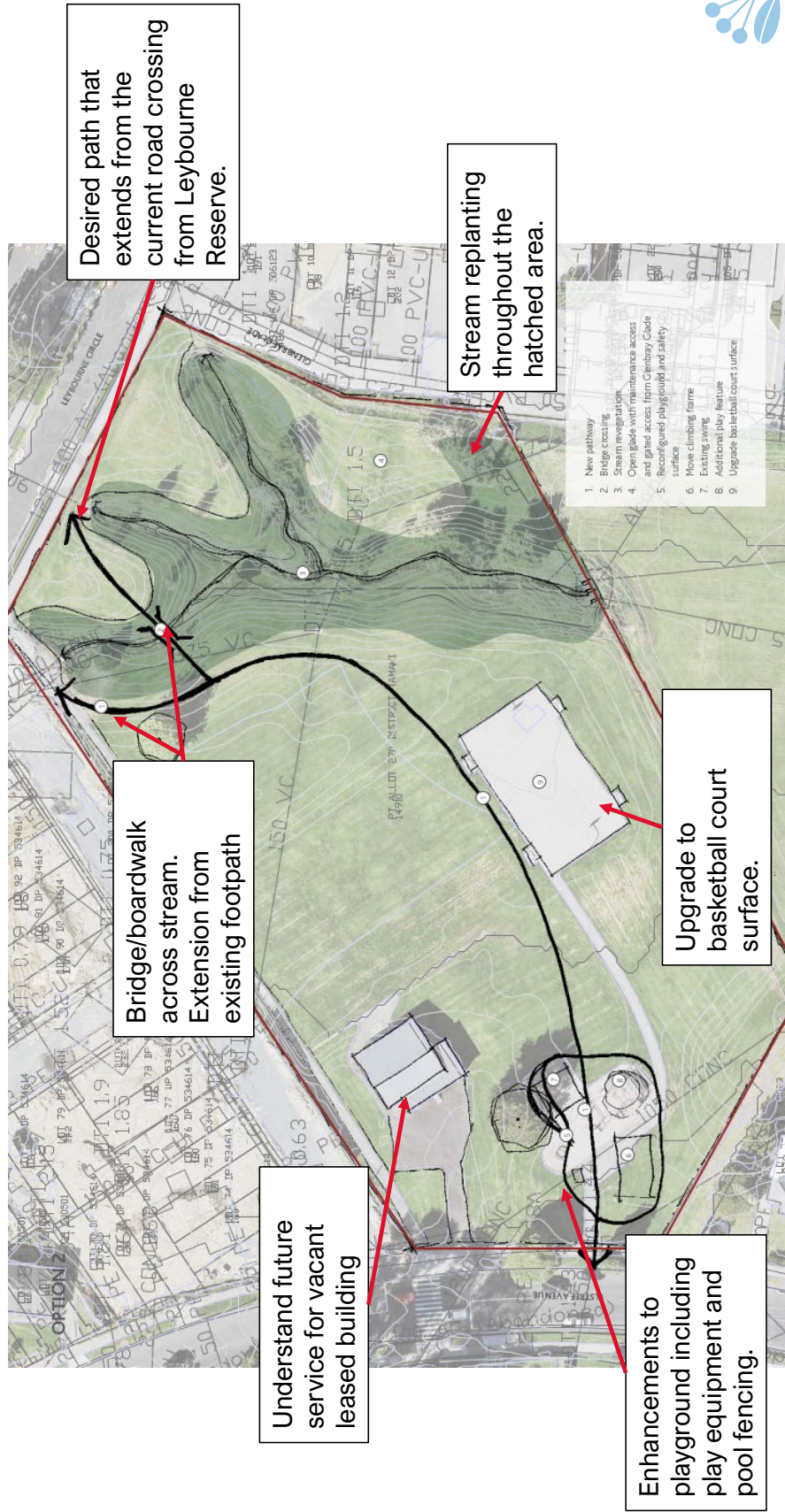


Concept Plan – Option 1



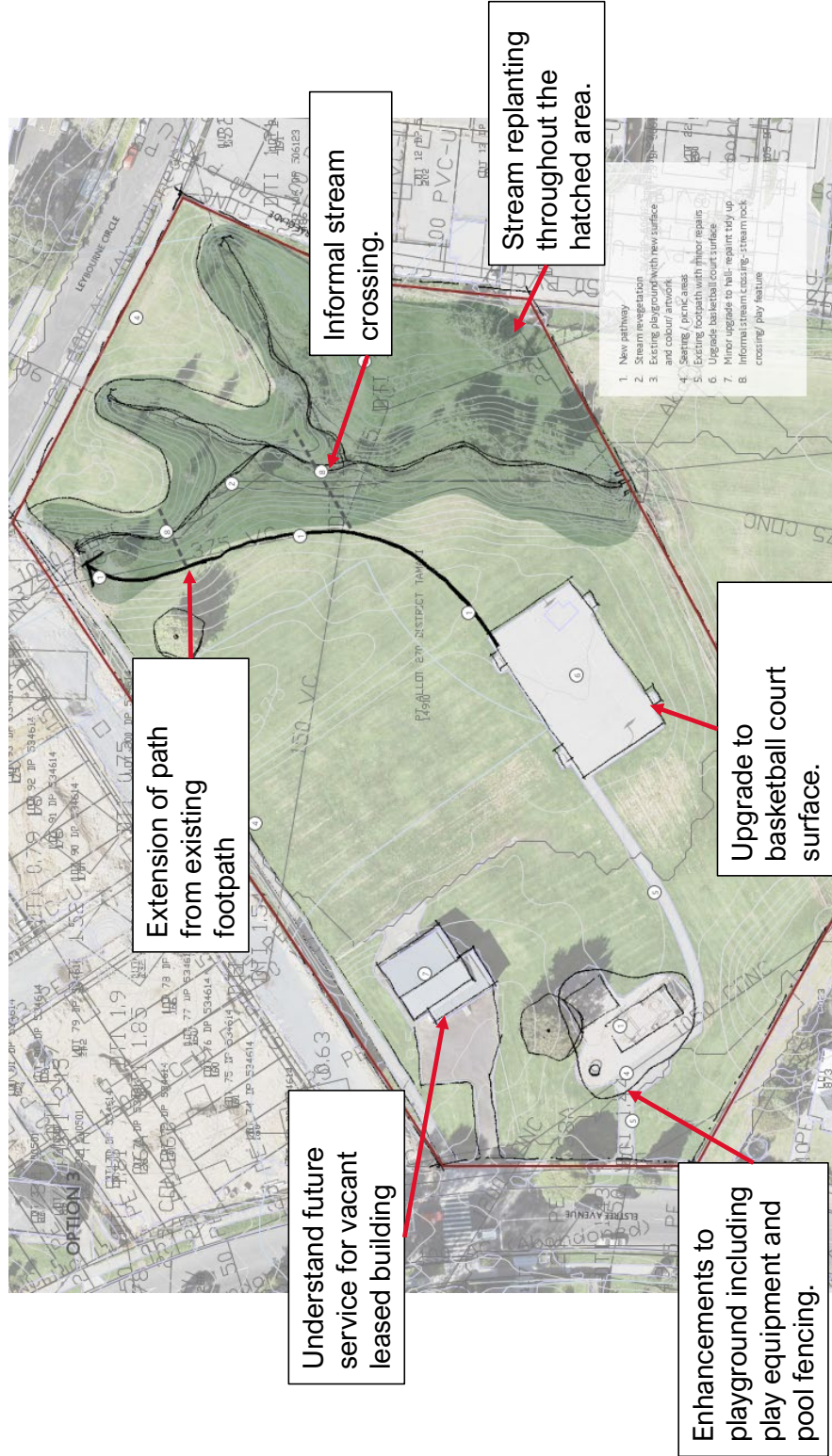


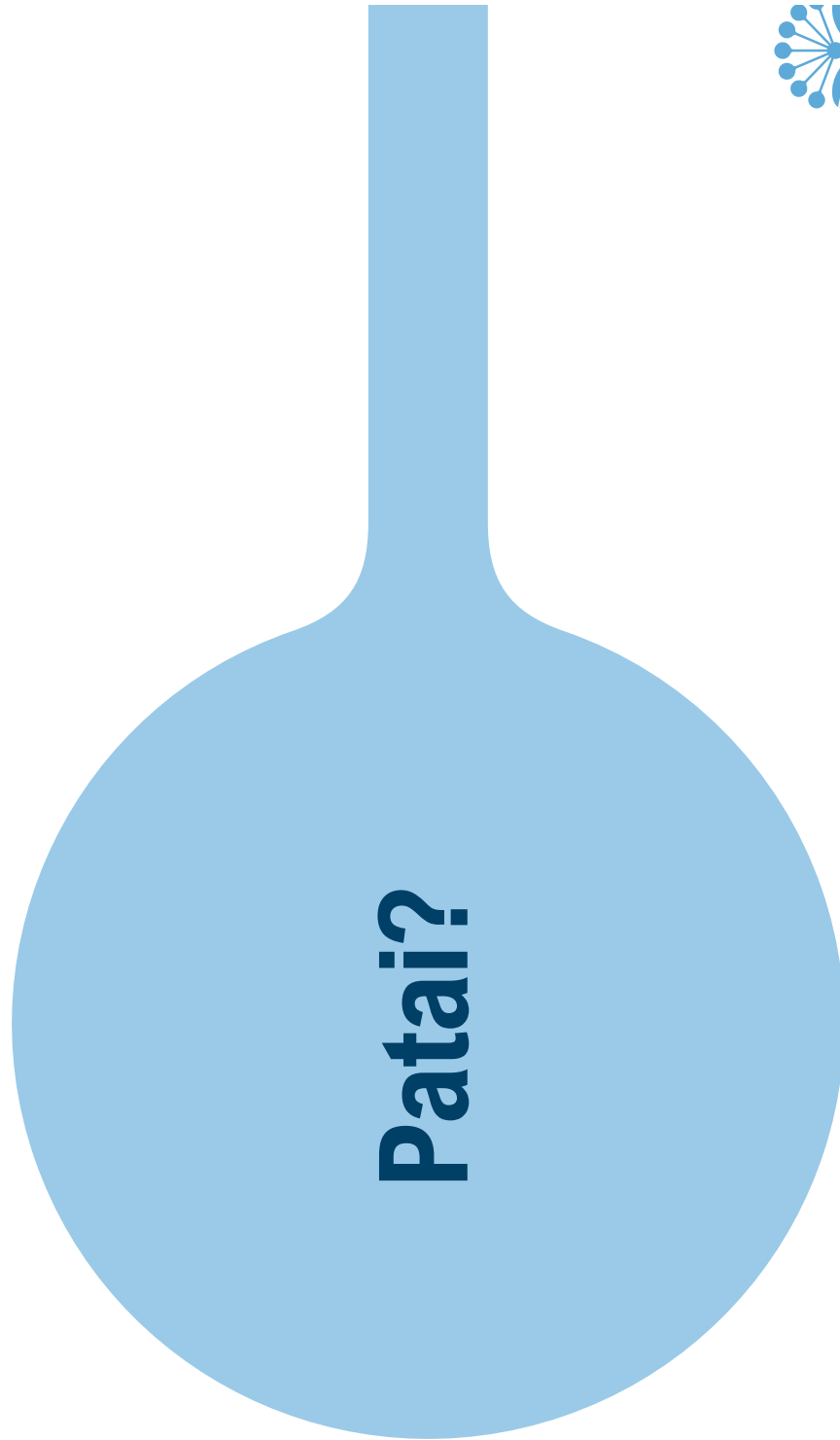
Concept Plan – Option 2





Concept Plan – Option 3





Item 5

Attachment A



Item 5

Attachment A



Thank you

Ngā mihi



Maungakiekie-Tāmaki
Local Board
 Auckland Council

ISSUED FOR REVIEW

JOHNSON RESERVE

Panmure, Auckland 1072

REV B: REVIEW

DRAWING LIST

Plans

L8001	Site context
L8101	General Arrangement Plan Sheet 1
L8102	General Arrangement Plan Sheet 2
L8201	Vegetation Management Plan Sheet 1
L8202	Vegetation Management Plan Sheet 2
L8301	Earthworks and Infrastructure Sheet 1
L8302	Earthworks and Infrastructure Sheet 2



