

**Date:** Tuesday, 4 March 2025  
**Time:** 9.30am  
**Meeting Room:** The Leslie Comrie Board Room  
**Venue:** Level One Franklin: The Centre  
12 Massey Ave  
Pukekohe  
and via Microsoft Teams videoconference

---

## Franklin Local Board Workshop

### OPEN AGENDA

---

#### MEMBERSHIP

|                           |                  |
|---------------------------|------------------|
| <b>Chairperson</b>        | Angela Fulljames |
| <b>Deputy Chairperson</b> | Alan Cole        |
| <b>Members</b>            | Malcolm Bell JP  |
|                           | Sharlene Druyven |
|                           | Gary Holmes      |
|                           | Amanda Hopkins   |
|                           | Andrew Kay       |
|                           | Amanda Kinzett   |
|                           | Logan Soole      |

**Denise Gunn**  
Democracy Advisor

27 February 2025

Contact Telephone: 021 981 028  
Email: [denise.gunn@aucklandcouncil.govt.nz](mailto:denise.gunn@aucklandcouncil.govt.nz)  
Website: [www.aucklandcouncil.govt.nz](http://www.aucklandcouncil.govt.nz)

| ITEM | TABLE OF CONTENTS                                       | PAGE |
|------|---|------|
| 1    | Ngā Tamōtanga   Apologies                               | 2    |
| 2    | Te Whakapuaki i te Whai Pānga   Declaration of Interest | 2    |
| 3    | Local Board Workshop                                    | 2    |

## 1 Ngā Tamōtanga | Apologies

At the close of the agenda no apologies had been received.

## 2 Te Whakapuaki i te Whai Pānga | Declaration of Interest

Members are reminded of the need to be vigilant to stand aside from decision making when a conflict arises between their role as a member and any private or other external interest they might have.

## 3 Local Board Workshop

# Local Board Workshop

File No.: CP2025/02988

Note 1: This workshop has been called by the chairperson in consultation with the staff.

Note 2: No working party/workshop may reach any decision or adopt any resolution unless specifically delegated to do so.

## Te take mō te pūrongo Purpose of the report

1. To present the Franklin Local Board workshop agenda for 4 March 2025.

## Whakarāpopototanga matua Executive summary

2. Most workshops are open to the public to attend as observers in person or online.
3. Some sessions may not be open to the public. The staff / chairperson and deputy chairperson decide which sessions are open to the public, depending on the sensitivity of the information being discussed. If a session is not open, a reason will be provided below.
4. The public can observe the workshop via MS Teams where direct attendance is impractical. Email [franklinlocalboard@aucklandcouncil.govt.nz](mailto:franklinlocalboard@aucklandcouncil.govt.nz) to request a link to join the workshop online by 4 pm the day prior (approved by the Chair).
5. Local Board workshops provide an opportunity for local boards to carry out their governance role in the following areas:
  - a) Accountability to the public
  - b) Engagement
  - c) Input to regional decision-making
  - d) Keeping informed
  - e) Local initiative / preparing for specific decisions
  - f) Oversight and monitoring
  - g) Setting direction / priorities / budget.
6. Workshops do not have decision-making authority.
7. Workshops are used to canvass issues, prepare local board members for upcoming decisions and to enable discussion between elected members and staff.

8. Members are respectfully reminded of their Code of Conduct obligations with respect to conflicts of interest and confidentiality.
9. The following will be covered in the workshop:

| <b>Session 1 - 10.15-11.15am</b>                           |   |
|--|---|
| <b>Regional Parks implementation plan</b>                  |   |
| Presenter/s:   | Scott de Silva, Manager Regional Parks<br>Trent Taylor, Principal Ranger South  |
| Purpose:   | Present an annual implementation plan report 2024-2025  |
| Governance role:   | Oversight and monitoring  |
| Proposed Outcome/s:  | Board are kept updated on the work of the Regional Parks team   |
| Attachment A:  | Regional Parks Implementation Plan July 2024-June 2025  |
| Attachment B:  | Memo- Regional Parks Implementation Plan November 2024  |
| <b>Session 2 –11.15-12 noon</b>                            |   |
| <b>General Business</b>                                    |   |
| Presenter/s:   | Orrin Kapua, Advisor<br>Local Board Chair   |
| Purpose:   | Update the board on matters arising, Chairs updates   |
| Governance role:   | Keeping informed, setting direction   |
| Proposed Outcome/s:  | Board are kept informed and provide direction to staff on matters arising<br>There were no attachments at time of publication                               |
| <b>LUNCH 12.00-1.00pm</b>                                  |   |
| <b>Session 3 – 1.00-2.00pm</b>                             |   |
| <b>Parks and Community Facilities (PCF) monthly update</b> |   |
| Presenter/s:   | Moushmi Sharan, Work Programme Lead<br>Eli Ewens, Manager Area Operations<br>Jenny Young, Lease Advisor<br>Kristen Greenfield, Place and Partner Specialist |
| Purpose:   | Update the board on the work programme and projects   |
| Governance role:   | Oversight and monitoring  |
| Proposed Outcome/s:  | Board are kept updated on the projects and work programme of PCF  |
| Attachment C:  | Parks and Community Facilities FY25 monthly report  |
| <b>Session 4 – 2.00-3.00pm</b>                             |   |
| <b>Local Board budget and cost pressures workshop</b>      |   |
| Presenter/s:   | Faithe Smith, Lead Financial Advisor  |
| Purpose:   | Present the 2025/2026 budget position and cost pressures on that budget   |

Governance role: Setting direction/priorities/budgets

Proposed Outcome/s:

ard are updated and informed on budget pressures that will affect the 2025/2026 budgets, prior to a report coming to the business meeting.

Attachment D: Franklin Local Board budgets and cost pressures

## Ngā tāpirihanga Attachments

| No.               | Title   | Page |
|-------------------|---|------|
| <a href="#">A</a> | Regional Parks Implementation Plan 2024-2025                    | 5    |
| <a href="#">B</a> | Memo - Regional Parks Implementation Plan November 2024         | 31   |
| <a href="#">C</a> | Parks and Community Facilities work programme update March 2025 | 33   |
| <a href="#">D</a> | Franklin Local Board Budgets and Cost Pressures                 | 63   |



Item 3

Attachment A

# Regional Parks Implementation Plan

July 2024 - June 2025

Prepared September 2024

[aucklandcouncil.govt.nz](http://aucklandcouncil.govt.nz)



# Contents

|  |    |
|--|----|
| Introduction .....                                   | 2  |
| Context .....  | 3  |
| Regional Parks Political Working Group.....          | 3  |
| Mana whenua involvement .....                        | 4  |
| Our focus for delivery in 2024/2025.....             | 9  |
| Proposed work programme/ projects for 2024/2025..... | 9  |
| Projects underway or Completed.....                  | 11 |
| Implementation plan – structure .....                | 13 |
| Proposed capex work programme for 2024/2025 .....    | 24 |
| Reporting on progress .....                          | 24 |



# 1. Introduction

The Regional Parks Management Plan (RPMP) was approved by the Parks, Arts, Community and Events Committee in September 2022.

This document is the first annual **Implementation Plan**, which has been prepared to provide an overview of the current work underway on regional parks and the planned work programmes to be delivered during the 2024/2025 financial year and an overview of the wider work program for the life of the plan.

Each year an implementation plan will be prepared to provide information to elected members, mana whenua, key stakeholders and the public on the work programmes and projects that are programmed to be delivered in the timeframes indicated and the available funding.

The Implementation Plan provides context on:

- Regional Parks Political Working Group recommendations
- Mana whenua involvement
- Progress to date against the RPMP actions
- A summary of the work to be delivered, aligned to RPMP key focus areas
- A summary of the proposed capex projects to be delivered over the next 1-3 years.

The Implementation Plan will continue to change and adapt each year in response to progress made, new opportunities and challenges and changes in priorities for funding, set through the annual plans and long-term plans.

In September of each year, an Annual Report will be prepared to show what progress has been made to implement the RPMP 2022 actions.



## 2. Context

This section provides some context around events and activities that have occurred since the RPMP was approved in September 2022, to help inform an understanding of the focus and content of this implementation plan. The impacts of the storm events in 2023 delayed the delivery of some of the programmes originally identified in the plan. Recommendations from the Regional Parks Political Working Group and Mayoral Proposal on Regional Parks that have been incorporated into the Long-term Plan 2024-2034 are also identified.

Engagement and partnering with Mana Whenua has been strongly identified and captured in Chapter 5 of the RPMP. The framework identified will include greater involvement in partnering and working on park management decisions, building capability and acknowledging Mana Whenua as partners.

### Regional Parks Political Working Group

The Regional Parks Political Working Group was established in July 2023 to make recommendations on regional parks management and acquisitions that would inform the development of the Long Term Plan 2024-2034. Recommendations from the working group were reported back to the Governing Body in September and December 2023. These were also reflected in the Mayoral Proposal on the Draft Long-term Plan 2024-2034, and have been carried through into the final Long-term plan 2024-2034 adopted by the Governing Body in June 2024.

The recommendations are summarised below (Table 1) with commentary on the suggested actions to address them, as these also form part of this implementation plan.

**Table 1:** Political Working Party Recommendations

| Recommendations   | Commentary   |
|---|--|
| a) Review regional parks operations to ensure best-value for money from external contracts and in-park ranger operations. | A review of parks operations, ranger roles and responsibilities and the regional parks operating model is underway. This includes looking across functions to reduce duplication, create efficiencies and ensure value for money from external contracts.  |
| b) Investigate options to acquire land for a new regional park to support growth in the south of the Auckland region.     | Staff will investigate options to acquire and/or develop a new regional park in the south. This could include considering existing land at Puhuni / Ōtuataua or acquiring land on the west coast between Āwhitu and Port Waikato.  |
| c) Build cooperation between the regional parks network and mana-whenua owned Tūpuna Maunga whenua.                       | Staff from both teams have committed to regularly meeting to share ideas and experiences. Recent conversations on the proposal for a predator fenced sanctuary at Wiri have identified an opportunity for Regional Parks and the Tupuna Maunga team to collaborate.<br><br>Staff have also identified an opportunity to provide an integrated view of Māori and European history in the area, including protecting cultural heritage landscapes, the volcanic geology and ecology within the Manukau estuary.<br><br>Staff are working with the managers of the adjoining open space to provide and maintain ecological connections and corridors to surrounding areas, including Te Pano o Mataoho / Te Ara Pueru / Mangere Mountain and Ōtuataua Stonefields Historic Reserve. |



|   |   |
|---|---|
| <p>d) Involve mana whenua in the preparation and engagement on all plans in regional parks.</p> | <p>Staff continue to engage regularly with mana whenua on specific projects, to support their involvement in park management activities and acknowledge their relationships with ancestral lands and taonga held within regional parks.</p> |
| <p>e) Review track upgrade methodologies to ensure resilience and functionality</p>             | <p>Track construction standards are continually reviewed in terms of materials, cost effectiveness, innovation and building requirements to take into account climate change.</p>   |
| <p>f) Safeguard all regional parks' legal protection (section 139 Local Government Act)</p>     | <p>Work is underway to protect all recently acquired regional parkland in perpetuity. This is being led by the Land Advisory team, in conjunction with Service and Asset Planning.</p>  |



### 3. Mana whenua involvement

Chapter 5 of the Regional Parks Management Plan 2022 outlines the framework for partnering with mana whenua to support the principles of Te Tiriti o Waitangi in park management. At management, project and operational levels council is committed to working with mana whenua to develop effective options for greater involvement.

The objectives within chapter 5 are:

7. To strengthen partnerships with mana whenua in managing parks.
8. To acknowledge and support mana whenua relationships with their ancestral lands and taonga held within regional parks.
9. To support the expression of Māori identity and culture on parks.
10. To support Māori wellbeing through use and development of regional of regional parks.

The respective policy directions to support the achievement of these objectives are:

14. Work with mana whenua on opportunities for greater involvement and partnership in park management including, but not limited to:
  - a. options to participate in park management including co-management
  - b. developing proposals for activities in regional parks
  - c. developing effective processes to engage early with mana whenua and work together across projects and programmes of work affecting park land and applications for discretionary activities
  - d. supporting capability and capacity building for partnership
  - e. developing processes with mana whenua to support implementation of this plan
  - f. developing options to engage kaitiaki Māori rangers
  - g. considering ways to strengthen involvement in parks identified by mana whenua as having cultural significance.
15. Acknowledge mana whenua relationships to parks and work with mana whenua to support expression of Māori identity and culture including, but not limited to:
  - a. the provision of te reo Māori names and narratives for parks and park features (for the full policy on naming refer to [Naming parks and park features](#), in chapter 8).
  - b. acknowledging mana whenua associations with parks including through interpretation and information or tohu mana whenua
  - c. encouraging mana whenua leadership or involvement in education and interpretation programmes
  - d. incorporating Māori design into new park developments
  - e. supporting relationship-building and cultural inductions between mana whenua and those maintaining parks or working on parks, such as stakeholders, and concessionaires.
16. Consider ways to strengthen relationships between council staff, contractors and mana whenua including, but not limited to:
  - a. building staff and contractor capability and understanding of mana whenua values, ways of working and context
  - b. developing relationship agreements or memorandums of understanding.
17. Support mana whenua to recognise their customary relationship to the whenua in parks such as:

- a. enabling the appropriate recognition and consideration of mana whenua traditional practices and tikanga
  - b. considering options to support and manage access for customary activities and resource use
  - c. planting of plants for rongoā or traditional cultural harvest; and supporting the use of non-threatened plants for these purposes
  - d. enhancing the mauri of taonga within parks including, but not limited to, restoration and planting plans, conservation plans and managing biosecurity threats e.g., through rāhui.
18. Support opportunities to work with Māori to improve their wellbeing in alignment with the outcomes of Kia Ora Tāmaki Makaurau; for example, through programmes and services on parks that target Māori cultural, physical and mental health.

In developing this implementation plan, council will continue to engage with mana whenua in the long term to understand where their interests lie and the outcomes they are seeking. This will enable a consistent approach to how we honour mana whenua aspirations across the park network. We recognise their interest may be at a general level, or more directly related to the delivery of specific projects or initiatives, or not a priority at this time.

Set out in Table 2 below a list of park-specific projects relating to the protection of cultural heritage sites, park naming and interpretation opportunities that may be of interest to mana whenua. Detailed operational plans are yet to be developed to confirm when these projects will begin. We are working with mana whenua to understand how we can partner on these projects. The key contact for each of these projects is included in the table.

**Table 2:** Park-specific management intentions for the protection of cultural heritage, park naming, interpretation.

| Management intentions   | Category                                | Park       | Contact           |
|---|---|------------|-------------------|
| Work with mana whenua to identify, protect and interpret Māori heritage on the park.  | Protection / interpretation of heritage | All parks  | Tristine Le Guern |
| Develop interpretation on the cultural heritage values of the park, including mana whenua traditional history, European history, heritage buildings and the creation of the wildlife sanctuary. Update and renew existing interpretation as required. | Protection / interpretation of heritage | Glenfern   | Jason Maguiness   |
| Work with mana whenua to plan the protection of Te Kiri Pā and implement recommendations for the ongoing management of the site.  | Specific site protection                | Pakiri     | Jason Maguiness   |
| Continue to work with mana whenua on the installation of cultural markers (pou) on the park that will enhance the physical cultural presence  | Specific site protection                | Pakiri     | Jason Maguiness   |
| Work with mana whenua to prepare and implement a conservation management plan for the ongoing protection of Mangatāwhiri (Oponui) Pā.   | Specific site protection                | Tawharanui | Jason Maguiness   |
| Work with mana whenua to plan the protection of Mātairoa pā site, and implement recommendations for the ongoing management of the site.   | Specific site protection                | Scandrett  | Jason Maguiness   |
| Consider options to ensure the protection and integrated management of the Purahurawai pā site (R09/121), in consultation with the private landowner.   | Specific site protection                | Scandrett  | Jason Maguiness   |

|   |                          |                  |                 |
|---|--------------------------|------------------|-----------------|
| Review the management plan for Ōtarawao Pā (R10/413) in consultation with mana whenua and implement practical recommendations to protect this heritage site.  | Specific site protection | Mahurangi West   | Jason Maguiness |
| Prepare a conservation plan with mana whenua to protect and maintain Māori heritage sites within the park including the ridge pā site (R10/164), midden, terraces, the logging chute (R10/248), urupā /cemetery (R10/243) (refer also intention 35), historic settlement (R10/243) and headland pā (R10/91).  | Specific site protection | Te Muri          | Jason Maguiness |
| Remove the fence that bisects the ridge pā site (R10/164), remove grazing cattle and restrict walking access on the site.   | Specific site protection | Te Muri          | Jason Maguiness |
| Work with mana whenua to protect the wāhi tupuna within the park, particularly within the foredune area.  | Specific site protection | Long Bay         | Jason Maguiness |
| Work with mana whenua to prepare and implement a preservation plan for the management of the interglacial terrace and Muriwai Pā site (Q09/86).   | Specific site protection | Te Rau Puriri    | David Markham   |
| Work with mana whenua to undertake a cultural heritage survey of the land at Ōmokoiti Bay.  | Specific site protection | Te Rau Puriri    | David Markham   |
| Work with mana whenua to plan the protection of the Ōtakamiro Point Pa Site Q11/146 and Nearby Midden/Burial Site Q11/148 (guided by the conservation plan by Law and Associates, April 2002) and implement recommendations for the ongoing management of the site.   | Specific site protection | Muriwai          | David Markham   |
| Work with mana whenua on the protection of the Te Ahua pā (Mercer Bay Loop SMZ) and on updating the interpretation of the site.   | Specific site protection | Waitakere Ranges | David Markham   |
| Work with mana whenua on the protection and interpretation of the pā site (Lion Rock)   | Specific site protection | Waitakere Ranges | David Markham   |
| Work with mana whenua to plan for the protection of Ō-Manawātere pā and other significant cultural heritage sites at Ōmana, by considering existing conservation plans, heritage assessments and other relevant information before prioritising practical recommendations for the ongoing management of these sites.                                    | Specific site protection | Omana            | Trent Taylor    |
| Work with mana whenua to plan the preservation of Whakakaiwhara pā. This includes direction on whether the pā should be retired from grazing or alternative pasture management options explored such as the introduction of vegetation cover on exposed soils, stabilisation of erosion and removal of debris and pest plants from the defensive ditch. | Specific site protection | Duder            | Trent Taylor    |
| Plan for the protection of Pāwhetau, Koheruahi and Mātaitai Pā and other heritage sites in the park, by considering existing conservation plans, heritage assessments and other relevant information, before prioritising practical recommendations for the ongoing management of these places.   | Specific site protection | Waitawa          | Trent Taylor    |
| Develop the coastal side of the park (Karewa Avenue) in consultation with mana whenua and Hauraki District Council, with an emphasis on: a. protecting the urupa and other cultural heritage sites.   | Specific site protection | Waharau          | Trent Taylor    |
| Work with mana whenua to identify, protect and interpret Māori heritage on the park including developing plans, as required, for the pā on the park,  | Specific site protection | Whakatiwai       | Trent Taylor    |



|   |   |                                      |                 |
|---|---|--------------------------------------|-----------------|
| and implement recommendations for the ongoing management of the sites.  |   |                                      |                 |
| Facilitate the opportunity for mana whenua to tell their stories, including the potential development of a cultural heritage trail and working with them to develop interpretation around the significance of the pā site on Te Ārai Point.                   | New projects - heritage trail                 | Te Arai                              | Jason Maguiness |
| Facilitate the opportunity for mana whenua to reconnect to the park and tell their stories, including the development of wananga / learning experiences, a cultural heritage trail and interpretation around the significance of important sites on the park. | New project – interpretation / heritage trail | Atiu Creek                           | Jason Maguiness |
| Work with mana whenua to identify and interpret cultural heritage in the park and to develop a cultural heritage interpretation or trail.   | New projects - heritage trail                 | Glenfern                             | Jason Maguiness |
| Work with mana whenua to identify, protect and interpret Māori heritage in the park and to develop a cultural heritage interpretation or trail.   | New project – interpretation / heritage trail | Duder                                | Trent Taylor    |
| Develop a heritage trail, that could be in conjunction with development of the Hūnua Trail, that tells stories of the Hūnua Ranges past and present.  | New project – interpretation / heritage trail | Hunua Ranges                         | Trent Taylor    |
| Work with mana whenua to investigate changing the name of the park to better reflect its traditional name and to explore the naming of park features.   | Park naming                                   | Waitakere Ranges                     | David Markham   |
| Work with mana whenua to investigate renaming Muriwai Regional Park.  | Park naming                                   | Muriwai                              | David Markham   |
| Adopt a Māori name alongside the English name for this park once a name has been provided by mana whenua.   | Park naming                                   | Ambury                               | Trent Taylor    |
| While honouring the heritage of the English park name, continue to discuss the option with affected parties of adopting a dual Māori name for the park from mana whenua.  | Park naming                                   | Duder (note this project is on hold) | Trent Taylor    |
| Work with mana whenua to review the name of the park.   | Park naming                                   | Omana                                | Trent Taylor    |
| Work with mana whenua to review the name of the park.   | Park naming                                   | Pakiri                               | Jason Maguiness |
| Adopt a Māori name alongside the English name for this park once a name has been provided by mana whenua.   | Park naming                                   | Glenfern                             | Jason Maguiness |
| Work with mana whenua to review the name of this park.  | Park naming                                   | Mahurangi West                       | Jason Maguiness |
| Work with mana whenua to review the name of this park.  | Park naming                                   | Mahurangi East                       | Jason Maguiness |
| Adopt a Māori name alongside the English name for this park once a name has been provided by mana whenua.   | Park naming                                   | Wenderholm                           | Jason Maguiness |
| Adopt a Māori name alongside the English name for this park once a name has been provided by mana whenua.   | Park naming                                   | Shakespear                           | Jason Maguiness |
| Adopt a Māori name alongside the English name for this park once a name has been provided by mana whenua.   | Park naming                                   | Long Bay                             | Jason Maguiness |

## 4. Our focus for delivery in 2024/2025

These are six key focus areas identified within the RPMP 2022.

|   |  |   |
|---|--|---|
| <p><b>Council’s commitment to Te Tiriti</b></p> <ul style="list-style-type: none"> <li>Acknowledging the principles of Te Tiriti o Waitangi</li> <li>Acknowledging the importance of the regional parks to mana whenua</li> <li>Continuing to build meaningful partnerships with mana whenua</li> <li>Supporting expression of Māori identity in parks and park naming</li> </ul> | <p>Protecting biodiversity</p> <ul style="list-style-type: none"> <li>Safeguarding threatened species</li> <li>Protecting current and future biodiversity</li> <li>Partnering with kaitiaki</li> <li>Linking landscapes and ecosystems</li> <li>Building a culture of caring for nature</li> </ul> | <p>Adding value to the visitor experience</p> <ul style="list-style-type: none"> <li>Offering more tailored visitor experiences</li> <li>Striking a careful balance to retain natural character</li> <li>Prioritising and supporting mana whenua-led ventures</li> <li>Connecting diverse communities to parks in their way</li> <li>Retaining free access for informal recreation</li> </ul> |
| <p>Adapting to climate change</p> <ul style="list-style-type: none"> <li>Managing a retreat from coastal erosion</li> <li>Creating more shade for visitors and stock</li> <li>Planning for greater fire and hazards risks.</li> </ul>   | <p>Mitigating climate change</p> <ul style="list-style-type: none"> <li>Prioritising forest and ecosystem health to keep existing carbon stores</li> <li>Setting an emissions target for farming</li> <li>Promoting and enabling low emissions visitor access to parks.</li> </ul>                 | <p>Collaborating to achieve outcomes</p> <ul style="list-style-type: none"> <li>Building on current collaboration with others</li> <li>Creating new collaborations that support park outcomes</li> <li>Reviewing the framework for commercial activities</li> <li>Communicating, consulting, and reporting on progress.</li> </ul>  |

Focusing our efforts in these areas helps to uphold and deliver the RPMP vision and values. They also provide direction for setting priorities for our work programme - some activities will continue to be delivered as ‘business as usual’ while new projects will be introduced each year to specifically deliver on the management intentions within the RPMP.

### High level priority programme/ projects for 2024/2025

These are the high level priority programmes / projects identified for delivery in this period:

- Strengthen our relationships with mana whenua and identify their priorities for involvement in park management
- Deliver the priority capex works funded in 2024/2025
- Continue our storm recovery work on regional parks (track rebuilds, etc) subject to funding
- Begin developing a Recreation Plan for the Waitākere Ranges Regional Park
- Review the commercial operator’s framework and implement any agreed changes
- Complete the new Fire Response and Suppression Plan for the park network.
- Complete and implement the Operational Plan for Shakespear and Tāwharanui open sanctuaries.
- Embed the new 5 Year Farming strategy.
- Review the NETR funded conservation programme and implement a revised work programme



- Enhance and expand the visitor services provided at Arataki Visitor Centre.
- Improve our asset data capture and management of park assets.
- Continue to work collaboratively with our key stakeholders and partners to increase the quality of visitor experiences on regional parks.
- Improve our communication with the key stakeholders and the public on progress in implementing the RPMP.

Details on the programmes and projects to be delivered under each key focus area, with indicative timeframes for delivery, are listed in the series of tables below. These provide an overview of both ongoing 'business as usual' programmes and proposed new projects identified in the RPMP.

A summary table of the proposed / approved capex programme to be delivered in the 2024/2025 financial year is attached separately. This includes indicative information on the proposed capex projects planned for the following two years, noting that funding for the outer years is subject to review and final approval.

The timing, prioritisation and delivery of the programmes and projects identified may change during the year due to changing priorities, shifts in funding allocation and/or delays in contractor availability to complete the work. Any changes will be communicated to key stakeholders and the public through communication updates.



## 5. Progress

In addition to the work programme for 2024/25, and since the adoption of the RPMP a significant amount of work has already been completed or continued as part of normal operations. This list is a summary of work underway or completed and does not include all projects within the current work programme.

| Key focus area                               | Activity  | Timing   |
|--|---|--|
| Council's commitment to Te Tiriti o Waitangi | Mana whenua engagement is ongoing across all sectors, in addition to specific engagement on individual projects or initiatives  | Ongoing  |
|  | Te Kete Rukuruku programme to adopt bilingual park names is progressing. Tranche 1 includes Ambury, Ōmana, Shakespear, Wenderholm, Glenfern Sanctuary and Long Bay. Report due to Parks Committee early in the new year on the five names finalised.  | February 2025  |
|  | Design and installation of interpretation at Te Piringa (Cascade Kauri) completed, in collaboration with Te Kawerau ā Maki  | Completed Nov/Dec 2023                                       |
|  | Project underway to progress the Deed of Acknowledgement requested by Te Kawerau ā Maki   | Underway   |
|  | Te Kawerau ā Maki are jointly involved in delivering cultural education and community initiatives at Arataki Visitor Centre.  | Ongoing  |
| Protecting biodiversity                      | An Ecological Management Plan for 5 Mile Strip, Muriwai Regional Park was completed in February 2024  | Completed February 2024.                                     |
|  | Approximately 1600 Wētāpunga were released into Tāwharanui and Shakespear sanctuaries during the period Dec 2023 to Feb 2024. A total of 40 Hihi were released into Shakespear in May 2024, while 10 North Island Brown Kiwi were exported from Tāwharanui to support introduction of kiwi to Mt Tamahunga. | Ongoing  |
|  | Pest plan and animal programmes have been expanded across the regional parks network, enabled by the increase in NETR funding in FY 24/25   | Ongoing  |
|  | Implementation of biodiversity protection programmes across the parks network continues.  | Ongoing  |
| Adapting to climate change                   | A review of the 2013 Regional Park's Fire Response Plan has been completed, a new Regional Parks Risk Reduction plan has been drafted and is currently being reviewed. Park-specific response plans have also been completed for Duder and Waitawa. the remainder will be staged over the next 1-3 years.   | New plan prepared 1-3 years for park-specific response plans |
|  | Parks infrastructure / assets adversely affected by January 2023 storm events continues to be repaired, although some assets are still awaiting geotechnical assessments to be completed and funding to be available to complete works.   | Ongoing  |
| Mitigating climate change                    | Solar powered pumps were installed for stock water supply at Anawhata and Pae o te Rangi, resulting in a reduction in emissions from petrol pumps and staff travel time.  | Completed  |
|  | Farming Operations are developing guidelines on providing shade for grazing livestock to prevent heat stress and contribute positively to animal welfare.   | In progress  |
|  | A programme is underway to renew all ATVs on regional parks over time. The plan is to trial a small number of vehicles to test their suitability for regional parks operations first.   | In progress  |

|                           |  |                      |
|---------------------------|--|----------------------|
|                           | Shakespear wetland expansion (Milldale development offset project) is underway. Proposed completion date for stage 1 of replanting is July 2025.   | In progress          |
| Adding value for visitors | Upgrades completed for Tāpapakanga bach, Ashby Homestead. A new orienteering course is in place at Tāpapakanga.  | Completed March 2024 |
|                           | Arataki Visitor Centre continues to deliver community / education programmes in collaboration with Te Kawerau ā Maki and Friends of Arataki. Examples include school holiday programmes with activities available each day, plus specific programmes associated with events such as Matariki and the Friends of Arataki Kids Day | Ongoing              |
|                           | A review of the commercial operator’s framework commenced in January 2024 and is progressing.  | In progress          |
|                           | New interpretation has been installed at Scandrett and Couldrey House, Wenderholm. New interpretation was developed in partnership with Ngāti Te Ata and installed at Āwhitu.  | Ongoing              |
| Collaborating with others | Concept plans are being developed by TOSSI for the restoration of wetlands at Tāwharanui, in collaboration with Regional Parks staff   | Ongoing              |
|                           | Staff value the ongoing collaboration with Ngāti Manuhiri as kaitiaki and their support during the introduction and translocation of threatened species to and from the open sanctuaries   | Ongoing              |
|                           | Regional Parks staff are meeting regularly with Friends of Regional Parks to discuss matters of interest or concern and opportunities for further collaboration.   | Quarterly meetings   |



# Implementation plan - structure

The implementation plan groups actions the actions the council is taking to deliver the policies and management intentions into **activity types** to provide a network overview of where effort is going into each type of activity.

The activity types are grouped under the **Key Focus Area** to which they most strongly contribute (many contribute to more than one focus areas but are not repeated). This enables the link between actions and focus area delivery to be tracked.

The series of tables on the following pages outline the priority actions and the programmes or projects that will be undertaken and their associated timeframe.

| Key focus area             | Activity type   | EXAMPLE  |
|----------------------------|---|--|
| Adapting to climate change | Coastal erosion; Fire risk; Adapting to heat  | Two existing ongoing programmes of work: <ul style="list-style-type: none"> <li>Dune restoration programme (ongoing on 12 parks)</li> <li>Shoreline Adaptation Plans (benefiting 5 parks in next 3 years)</li> </ul> |
| Climate mitigation         | Carbon storage; Farming; Access improvement; Climate information; Monitoring  |  |
| Protecting biodiversity    | Pest management, ecosystem restoration  |  |
| Enhancing visitor services | Visitor services; Spatial planning; Visitor safety; Equity; Overnight experiences; Learning experiences; Interpretation; Commercial relationships; Visitor responsibility |  |
| Te Tiriti commitment       | Strategic partnership development; Operational relationships; Māori identity  |  |
| Collaborating on outcomes  | Communication; Volunteer coordination; Relationships with groups; Partnership opportunities   |  |
| Statutory & other drivers  | Heritage assessment; Heritage protection; Statutory protection of regional parkland   |  |

## How it all fits together:

- RPMP vision and values: Are the overall target outcomes for implementation
- RPMP objectives: Set goals for specific areas, contributing to the target outcomes
- RPMP policies: Provide guidance for park management, some are network actions
- RPMP Management Intentions: Are the actions specific to a park, may be similar across parks.



## Key focus area 1 | Council's commitment to Te Tiriti o Waitangi

| Activity type                     | Priority actions: Council's commitment to Te Tiriti   | Programme or project   | Timeframe  |
|-----------------------------------|---|--|--|
| Strategic partnership development | Strengthen partnerships with mana whenua. Build opportunities for greater involvement in regional parks and work with them to identify priorities for their involvement in delivering the RPMP actions. | Develop a framework to engage with mana whenua on this plan and in the longer term, to understand where their interests lie and the outcomes they are seeking.   | 1-3 years to identify priorities and options for greater involvement |
| Strategic partnership development | Work with Te Kawerau ā Maki and Ngāti Whātua on a deed of acknowledgement as set out in the Waitākere Ranges Heritage Area Act  | Engage with Te Kawerau ā Maki and Ngāti Whātua to progress the Deed of Acknowledgement   | Currently underway - 6-12 months                                     |
| Operational relationships         | Work with mana whenua to identify, protect and interpret Māori heritage.  | Continue conversations with mana whenua to prioritise sites for protection and potential development of interpretation at specific locations. Delivery to be staged over 10 years  | 1-3 years to prioritise sites.<br>3-10 years delivery                |
| Māori identity                    | Support expression of Māori identity in parks through park naming and interpretation<br><br>Seek Māori names for: Ambury, Glenfern, Long Bay, Shakespear Wenderholm, and a correct name for Ōmana       | Te Kete Rukuruku Programme Tranche 1:<br>Confirm Māori names for the identified parks and timeframes for the staged the rollout of new signage.<br>Develop an annual programme to deliver prioritised interpretation projects on regional parks. | 1-5+ years<br>Delivery staged over 5-10 years.                       |
| Māori identity                    | Support expression of Māori identity in parks through the installation of interpretation.   | Develop a programme each financial year to fund and deliver prioritised interpretation projects on regional parks. Delivery will be aligned with completion of capex works.  | 1 year for annual programme<br>Delivery staged over 1-5, 5-10 years  |
| Operational relationships         | Collaboration between council and mana whenua on environmental restoration  | Continue building operational relationships with mana whenua to support their involvement in collaboratively delivering environmental restoration projects.  | Ongoing  |

14

## Key focus area 2 | Adapting to climate change

| Activity type                 | Priority actions: Adapting to climate change  | Programme or project   | Timeframe                                       |
|-------------------------------|---|--|---|
| Dune protection               | Continue to restore dunes by replanting to protect against coastal erosion / sea level rise; create / replant buffer areas to stabilize and protect dunes, (co-benefit: biodiversity protection)      | New project: develop a long term strategy for coastal restoration on regional parks, prioritising sites at risk for action. Includes liaison with Coastal Management Team to align with the Shoreline Adaptation Plans in place. | 1-3 years to review and identify priority sites |
| Stabilising land from erosion | Continue to revegetate areas to stabilise steep gullies, slopes and cliffs prone to erosion, reduce sediment discharges (co-benefit: biodiversity protection, water quality)                          | Deliver targeted revegetation programmes at sites at risk of erosion.  | Ongoing   |
| Coastal hazards / monitoring  | Manage coastal hazards and respond to sea level rise, inundation and the impacts of coastal processes. Identify actions to protect heritage, biodiversity and visitor facilities in vulnerable areas. | Continue assessing the impacts of coastal hazards on park assets, biodiversity and heritage sites. Identify at risk sites and implement appropriate actions (planned relocation, protection measures put in place)               | Ongoing   |
| Fire risk                     | Analyse wildfire risk and prepare a network risk reduction plan and specific response plans for individual parks  | Complete three park specific fire risk plans – Duder, Waitawa & Piha. Preparation of the remaining park-specific response plans to be staged over next 1-3 years.  | August 2024<br>1-3 years for plans              |
| Adapting to heat              | Prioritise planting specimen trees for shade and shelter in open areas  | New project: Develop a strategy for planting specimen trees across the network (Align with the wider Ngāhere programme)  | 3-5 years                                       |



### Key focus area 3 | Mitigating climate change

| Activity type              | Priority actions: Mitigating climate change   | Programme or project   | Timeframe              |
|----------------------------|---|--|------------------------|
| Carbon storage             | Revegetate 200 ha for climate mitigation and record carbon credits (co-benefit: biodiversity protection)  | Delivered via the Ngāhere programme – underway and on track.   | 1-10 years             |
| Monitoring                 | Monitor and report on council's greenhouse gas emissions for farming  | Emissions are monitored by the Farming Team and reported under Te Taruke-a-Tawhiri: Auckland's Climate Plan  | Ongoing                |
| Farm emissions reduction   | Review pastoral land management against cost, climate and visitor experience criteria (to determine the farming pathway to reduce emissions).       | Farming review completed May 2024, new 5 year farming strategy developed, aligned to RPMP outcomes. This will be implemented over the next 5 years.                                    | 1-5 years              |
| Access emissions reduction | Identify arrival zone enhancements in regional parks to support the walking/cycle trails in development: example is Puhoi to Pakiri and Hunua Trail | Aligned with delivery of proposed capex projects to enhance arrival zones – linkages to walking / cycle trails is a key consideration in spatial planning for enhancing arrival zones. | Ongoing                |
| Access emissions reduction | Identify and implement actions to improve low carbon emissions  | Emissions reduction actions being implemented through ongoing plant and equipment reviews (adoption of solar powered meters, electric vehicles and tools, etc)                         | Ongoing                |
| Access emissions reduction | Improve information and promote alternative ways to access regional parks other than by private vehicle to improve equitable access                 | Update existing information for visitors.<br>New project: investigate options and promote alternative ways to access regional parks – to be scoped and prioritised.                    | 1-3 years<br>3-5 years |
| Climate information        | Investigate introducing a voluntary carbon offset scheme (donation scheme) for park visitors  | New project: Potential partnership project, to be scoped and prioritised.  | 3-5 years              |

## Key focus area 4 | Protecting biodiversity

| Activity type         | Priority actions: Protecting biodiversity   | Programme or project   | Timeframe                               |
|-----------------------|---|--|---|
| Ecosystem restoration | Deliver ecosystem restoration programmes, monitor and review biodiversity management priorities   | Implement all integrated ecosystem restoration programmes. Ecological Management Plan for 5 Mile Strip, Muriwai completed.   | 1-10 years                              |
| Ecosystem restoration | Restore biodiversity in indigenous ecosystems including forest, wetlands, riparian margins, waterways (co-benefits: climate mitigation, resilience to climate change)   | Continue implementing biodiversity restoration programmes  | 1-10 years                              |
| Ecosystem restoration | Continue restoration/ re-introduction of rare and threatened species, working with partners to manage the <b>five sanctuaries at Glenfern Sanctuary, Hūnua Ranges (Kōkako Management Area), Shakespear, Tāwharanui and Waitākere Ranges (Ark in the Park).</b>                | Complete the annual operational plans 2024/25 for the open sanctuaries at Shakespear and Tāwharanui. Revie and update plans as required.<br><br>Prepare site specific plans for Glenfern Sanctuary, Hūnua Ranges (Kōkako Management Area), and Waitākere Ranges (Ark in the Park). | Completed<br><br>3-5 years              |
| Pest management       | Implement the Regional Pest Management Plan on regional parks (co-benefit: climate mitigation, biodiversity protection)   | Deliver targeted pest management programmes / operational actions across all parks, implementation staged over 10 years.   | 1-10 years                              |
| Pest management       | Implement the Kauri dieback management programme on regional parks. Includes monitoring kauri health, kauri dieback track upgrades, protecting areas free from kauri dieback and meeting our obligations under the National Pest Management Plan (Phytophthora Agathidicida). | This programme includes: <ul style="list-style-type: none"> <li>• completing the 5 Year Track Reopening Plan (2019-2024)</li> <li>• regular surveys to monitor kauri health</li> <li>• maintaining upgraded kauri tracks.</li> </ul>   | Completed<br><br>Ongoing<br>Ongoing     |
| Pest management       | Implement a landscape-scale approach to targeted pest management, integrated with pest control initiatives on adjacent public/private land across these parks: Mahurangi West, Te Muri, Wenderholm  | New project: Design an integrated pest management programme across Mahurangi West, Te Muri, Wenderholm.  | 3-5 years<br><br>Delivery over 10 years |

### Key focus area 4 | Protecting biodiversity - Restoration projects

These are the proposed new projects to be included in the conservation work programme.

| Priority park management intentions – restoration   | Programme or project   | Timeframe  |
|---|--|------------|
| Work with Glenfern Sanctuary Trust to support a “summit to the sea pathway” created by developing a planted corridor from the ridge of Kotuku Peninsula to Port Fitzroy Harbour.                                | To be scoped and prioritised, implementation will be staged over the next 10 years, in collaboration with Glenfern Sanctuary Trust   | 1-10 years |
| Develop a coastal forest restoration and enhancement programme, focused on protecting and replacing stands of pōhutukawa across the park network.   | New project: Prepare a plan for coastal forest restoration across the parks network – to be scoped and prioritised, delivery will be staged over 10 years.   | 3-6 years  |
| Restoration of the artificial ponds into natural wetlands at the northern end of Te Rau Pūiri Regional Park.  | This project is included in the concept plan prepared in 2021 for the development of Te Rau Pūiri (subject to final approval). Implementation of the concept plan actions will be staged over the next 10 years. | 6-10 years |
| Investigate the potential for indigenous revegetation on parts of Motukorea / Browns Island. Develop a revegetation plan to define locations where this can occur without compromising cultural heritage sites. | New project – to be scoped, noting there are limitations to revegetation on Motukorea due to the extensive archaeological sites that must be protected.  | 6-10 years |
| Support the TOSSI* proposal recreate the wetlands along the road flats from Anchor Bay to the campground access road at Tāwharanui. *(Tāwharanui Open Sanctuary Society Inc).                                   | TOSSI is exploring options to obtain funding for this proposal. Delivery will be collaborative, supported by Regional Parks and staged over time.  | 1-10 years |

## Key focus area 5 | Adding value to the visitor experience

| Activity type            | Priority actions: Adding value to the visitor experience  | Programme or project  | Timeframe                  |
|--------------------------|---|---|----------------------------|
| Recreation planning      | Develop a Recreation Plan for the Waitakere Ranges  | New project: Planning underway on background work required to develop plan, process for engaging with mana whenua, key stakeholders and public.   | 1-3 years to complete plan |
| Commercial relationships | Review the framework for concessionaires (commercial operators) on regional parks                   | New project: – review initiated in January 2024. Project plan to be developed to identify potential pilot sites to test out new operators over summer while new framework is completed. | 1-2 years                  |
| Interpretation           | Identify opportunities for new interpretation,  | Develop a prioritised list of new interpretation projects to be developed, including costs.   | 1-2 years                  |
| Interpretation           | Assess the condition of existing interpretation.  | Develop a prioritised list of existing interpretation requiring renewal, including cost.  | 1-2 years                  |
| Equity                   | Work with disability representatives to improve access and experience                               | Potential new partnership project: scope, prioritise and investigate options for pilot sites to improve access.   | <b>1-3 years</b>           |
| Equity                   | Improve equitable access and enjoyment of regional parks by <b>Auckland's diverse communities</b> . | Potential new partnership project: scope, prioritise and identify opportunities to work with select communities.  | <b>3-5 years</b>           |

Key focus area 5 | Adding value to the visitor experience - Priorities for spatial planning projects

| RPMP reference                     | Spatial planning exercise  | Timeframe        | Notes                   |
|------------------------------------|--|------------------|-------------------------|
| Waitakere Ranges MI 22, 23, 24, 25 | <b>Develop a Waitākere Ranges Regional Park Recreation Plan</b>  | 1-3 years        | Priority 1 spatial plan |
| Hunua Ranges MI 13 and 14          | <b>Develop a Hūnua Ranges Regional Park Recreation Plan.</b><br>Prepare a development plan for the Forestry Block in the northwest of the park that envisages providing a regionally important tramping, off-road running, horse riding and mountain biking destination. | 3-5 years        | Priority 2 spatial plan |
| Te Arai MI 30                      | Prepare and progressively implement a concept plan for the <b>Te Ārai South recreation hub.</b>  | 1-5 years        | Priority 3 spatial plan |
| Ambury MI 13, 15                   | Investigate preparing a needs assessment and spatial plan to transform the layout and function of the main arrival zone, surrounding recreation areas and operational depot.   | <b>3-5 years</b> | Proposed timeframe      |
| Duder MI 21                        | Investigate preparing a spatial plan for the development of the western end of the park including the Pallister Block, the park entrance off North Road and the northern paddocks adjacent to the entrance driveway.   | <b>5+ years</b>  | Proposed timeframe      |
| Long Bay MI 20                     | Review the Long Bay Concept Plan (2006) prior to preparing a spatial plan for the development of new recreation activities and associated visitor infrastructure at the northern part of the park.   | <b>1-3 years</b> | Proposed timeframe      |
| Mahurangi East MI 16               | Prepare a spatial plan for the future development of recreational opportunities at Mahurangi East.   | <b>1-3 years</b> | Proposed timeframe      |
| Motukorea / Browns Is MI 17        | Investigate preparing a spatial plan to guide the development of basic visitor infrastructure to manage recreation activity and protect park value.  | <b>5+ years</b>  | Proposed timeframe      |
| Muriwai MI 29                      | Investigate preparing a spatial plan for the area identified on Map 8:2 off Coast Road as an expanded arrival area which includes provision for new parking, picnicking, interpretation and safe access.   | <b>3-5 years</b> | Proposed timeframe      |
| Pakiri MI 16                       | Consider preparing a spatial plan for the development of the park.   | <b>1-5 years</b> | Proposed timeframe      |
| Whakanewha MI 32                   | Investigate preparing a spatial plan to transform the layout and function of the main arrival zone and park entry zone at Poukaraka Flats.   | <b>3-5 years</b> | Proposed timeframe      |

Key focus area 5 | Adding value to the visitor experience - Visitor amenity and recreation projects

| Priority park management intentions – Visitor amenity and recreation projects   | Programme or project   | Timeframe                                      |
|---|--|--|
| Develop a recreation plan for the <b>Hūnua Ranges</b> (includes reviewing the track network, accommodation offering; visitor facilities, and provision for new recreation activities).  | New project: Hunua Ranges Recreation Plan  | 3-5 years                                      |
| Reconfigure and / or develop new arrival areas to improve the visitor experience, rationalise use and upgrade facilities on these parks:<br><i>Ambury, Duder, Glenfern, Kakamatua (Waitākere Ranges), Mahurangi West, Motukorea / Browns Island, Muriwai, Te Arai, Te Muri, Te Rau Puriri, Waitawa, Whakanewha.</i>   | Arrival areas.<br>Scope and prioritise projects for inclusion in annual capex programme.                   | 1-3 years to scope<br>Delivery over 10 years   |
| Investigate expanding campground capacity, improving visitor facilities, provision for separate CSC campgrounds, bookable sites infrastructure, extending car parks, etc on these parks:<br><i>Ambury, Awhitu, Duder, Mahurangi West, Omana, Shakespear, Tapapakanga, Tawharanui, Te Muri, Waharau, Waitawa, Wenderholm, Whakanewha, Whakatiwai.</i><br>(See <b>Waitākere Ranges chapter for specific projects proposed</b> ) | Campgrounds / visitor facilities<br>Scope and prioritise projects for inclusion in annual capex programme. | 1-3 years to scope<br>Delivery over 10 years   |
| Investigate new recreation activities: develop walking / cycling tracks, horse riding access; potential sea kayak trail, heritage trails; expand the accommodation offering on these parks:<br><i>Atiu Creek, Long Bay, Mahurangi East, Mahurangi West, Muriwai, Pakiri, Shakespear, Tapapakanga, Tawharanui, Waharau.</i>  | New recreation activities<br>Scope and prioritise projects for inclusion in capex programme                | 1-3 years to scope.<br>Delivery over 4-6 years |
| Improve access to and within parks, visitor safety, connections to local / regional trail networks ( <b>Puhoi to Mangawhai Trail, Mahurangi Coastal Path, Hūnua Traverse</b> ) on these parks:<br><i>Ambury, Atiu Creek, Awhitu, Duder, Mahurangi East, Omana, Scandrett, Pakiri, Shakespear, Te Muri, Wenderholm, Whakanewha.</i>  | Access to parks / trails<br>Scope and prioritise projects for inclusion in capex programme                 | 1-3 years for scope.<br>Delivery over 10 years |
| Enhance education experiences for visitors on these parks:<br><i>Glenfern, Long Bay, Scandrett, Shakespear, Waitawa, Wenderholm, Whakanewha</i>   | Education experiences<br>Scope opportunities to develop and enhance education experiences.                 | 1-3 years for scope.<br>Delivery over 10 years |



Key focus area 5 | Adding value to the visitor experience - Heritage protection projects

| Priority park management intentions – Heritage protection  | Programme or project   | Timeframe  |
|--|--|--|
| Survey and assess the spatial extent of cultural heritage sites and develop site specific management actions.  | Liaise with the Heritage team to review the current work programme. Develop a process to set priorities, options and timeframes to increase programme delivery.  | 1-2 years for review<br>Delivery over 10 years     |
| In conjunction with mana whenua, establish priorities for the conservation and protection of significant cultural heritage sites on regional parks (includes pā sites, urupa and other taonga).                  | Engage with mana whenua to identify sites under serious threat and confirm priorities. Collaborate with the Heritage Team to identify opportunities to incorporate priority actions into their work programme. | 1-3 years to review<br>Delivery over 10 years      |
| Establish priorities for the conservation, maintenance and upgrade of built and historic heritage on regional parks (includes homesteads, historic buildings, structures, engineering works and other features). | Identify historic heritage buildings/sites needing urgent maintenance / renewal. Update the heritage asset management work programme to incorporate agreed priority works into annual capex work programmes.   | 1-3 years for priorities<br>Delivery over 10 years |
| Protect and value significant geological features  | Continue to work with mana whenua, volunteers and community groups to protect key geological features.   | Ongoing  |

## Key focus area 6 | Collaborating to achieve outcomes

| Activity type             | Priority actions: Collaborating to achieve outcomes   | Programme or project   | Timeframe  |
|---------------------------|---|--|--|
| Communication             | Engage with mana whenua and key stakeholders on implementing the RPMP   | Engagement with all parties will continue to build on existing and new relationships.  | Ongoing<br>Plan prepared annually in May / June for coming year. |
| Communication             | Increase communication with mana whenua, key stakeholders and the public on progress implementing the RPMP  | Develop and deliver the RPMP Annual Report   | Prepared annually in September                                   |
| Volunteer support         | Continue supporting volunteers delivering planting programmes, pest control and other activities on regional parks  | Implement volunteer programmes on regional parks<br><br>Review the current volunteer offering to ensure we are supporting volunteer activities and engagement. | Ongoing<br><br>1-3 years   |
| Relationships with groups | <b>Strengthen council's approach to working with community /</b> business groups through relationship agreements, where this is appropriate (note all relationships require a formal agreement) | Review existing partnerships / update MOUs as required   | 1-3 years  |
| Partnership opportunities | Identify new partnership opportunities to support the delivery of park outcomes   | New project: Develop a strategy to identify and target potential new partnerships.   | 1-3 years  |

## Proposed capex work programme for 2024/2025

The capex programme for financial year 2024/2025 was approved in July 2024 and will be provided separately. The programme also includes indicative information on projects planned for the 2025/2026 and 2026/2027 years.

The funding and content of the projects identified in the outlying years are still subject to review and approval through the annual plan process.

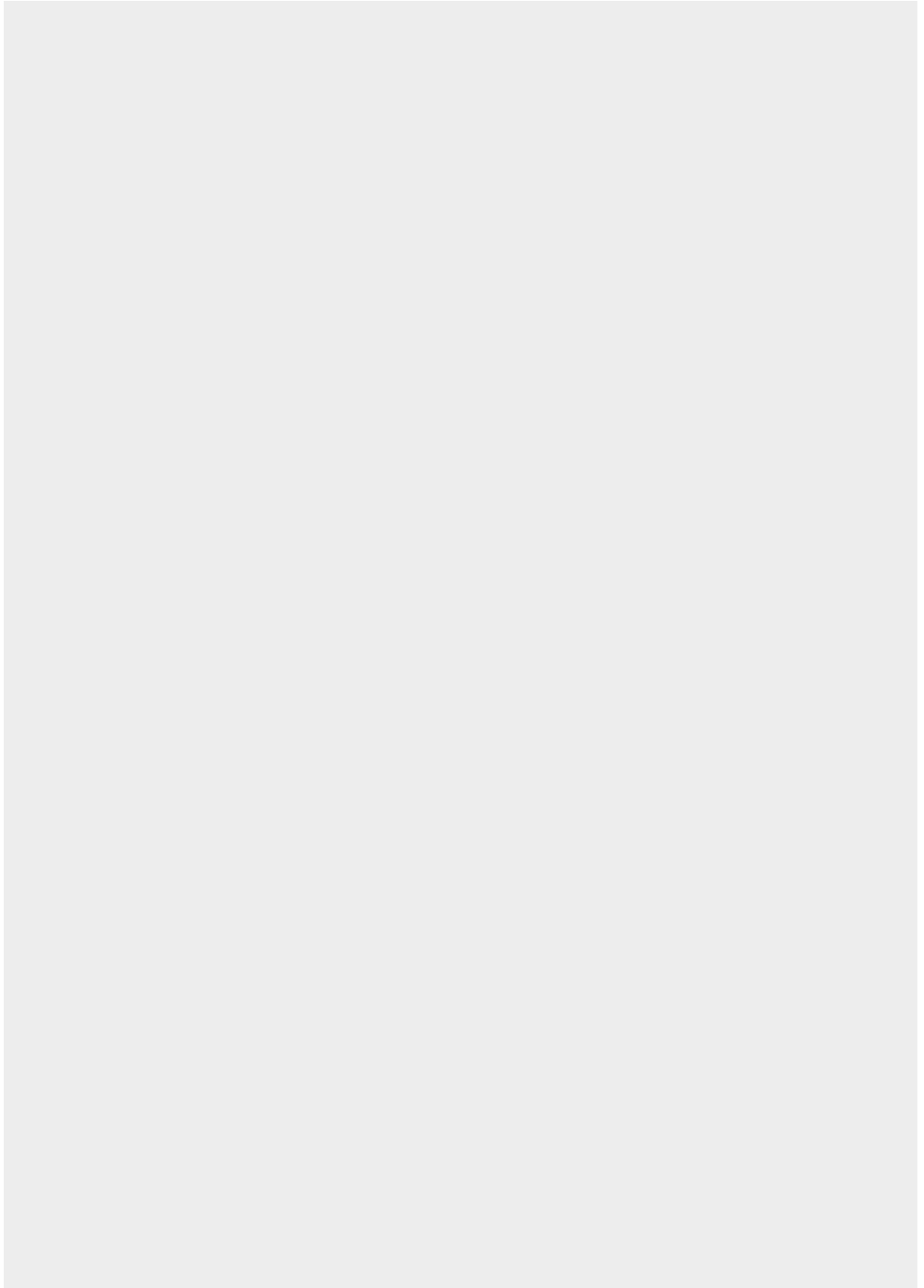
## Reporting on progress

An Annual Report on progress implementing the planned actions and capex works will be prepared **each year** and formally reported to the relevant committee.

The annual report will also be made available to mana whenua, key stakeholders, local community groups and the public.

**Item 3**

**Attachment A**





## Memorandum

27 November 2024

**To:** All local boards

**Subject:** **Regional Parks Implementation Plan 2024/2025**

**From:** Scott De Silva - Manager Regional Parks, Parks and Community Facilities

**Contact information:** [Scott.DeSilva@aucklandcouncil.govt.nz](mailto:Scott.DeSilva@aucklandcouncil.govt.nz)

### Purpose

1. To circulate the Regional Parks Implementation Plan 2024/2025 to all local boards for information.

### Context

2. The 2024/2025 Regional Parks Implementation Plan (implementation plan) was [presented](#) to the Parks Committee on 22 October 2024. The committee resolved ([PCCCC/2024/5A](#)) to request staff to circulate the implementation plans to local boards, key stakeholders and local community groups for information.

### Discussion

3. The implementation plan (Attachment A) gives effect to the 10-year vision set out in the Regional Parks Management Plan (RPMP) 2022, by providing direction on the delivery and timing of priority projects.
4. The implementation plan includes a mix of ongoing 'business as usual' programmes and specific projects to deliver against the six key focus areas set out in the RPMP:
  - the council's commitment to Te Tiriti o Waitangi
  - protecting biodiversity
  - adding value to the visitor experience
  - adapting to climate change
  - mitigating climate change
  - collaborating to achieve outcomes.
5. The capital work programme for financial year 2024/2025 reflects the regional parks projects included in the Regional Work Programme approved by the Planning, Environment and Parks in July 2024 (Resolution [PEPCC/2024/68](#)).
6. The implementation plan is not a consultation document, as its purpose is to outline the intended work programme to be delivered in the financial year 2024/2025 to enable achievement of the outcomes in the RPMP.
7. Regional Parks staff will contact local board staff to determine whether any local boards would like a workshop to discuss park-specific actions and share their views on the current use of regional parks in their area.

### Next steps

8. An Annual Report on progress implementing RPMP actions will be prepared each year and provided to local boards for their information.
9. Regional Parks staff are available to discuss and respond to any queries arising from the implementation plan and will coordinate with local board staff to arrange any requested workshops with local boards.

### Attachments

- A. Regional Parks Implementation Plan 2024/2025.





FRANKLIN  
Local Board Report – December 2024/January 2025



GREAT PLACES  
AUCKLANDERS LOVE  
PARKS & COMMUNITY FACILITIES

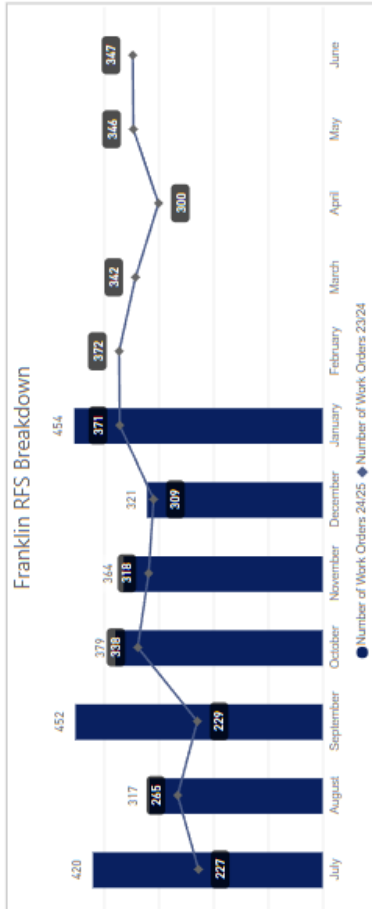


PERFORMANCE REPORTING

GREAT PLACES  
AUCKLANDERS LOVE  
PARKS & COMMUNITY FACILITIES

Request for Service Received

I raised for FY24/25 YTD 2707



includes RFS that have resulted in a Work Order for action.

Breakdown of Top 5 Request for Service for January

| Service Name                      | Number of Work Orders 24/25 |
|-----------------------------------|-----------------------------|
| Maintenance - General             | 69                          |
| Building Maintenance Service      | 63                          |
| Structure Maintenance and Repairs | 54                          |
| Tree Maintenance - General        | 34                          |
| Carpentry Maintenance Service     | 30                          |
| Loose Litter Collection           | 30                          |

Breakdown of Top 6 Request for Service FY24/25 YTD

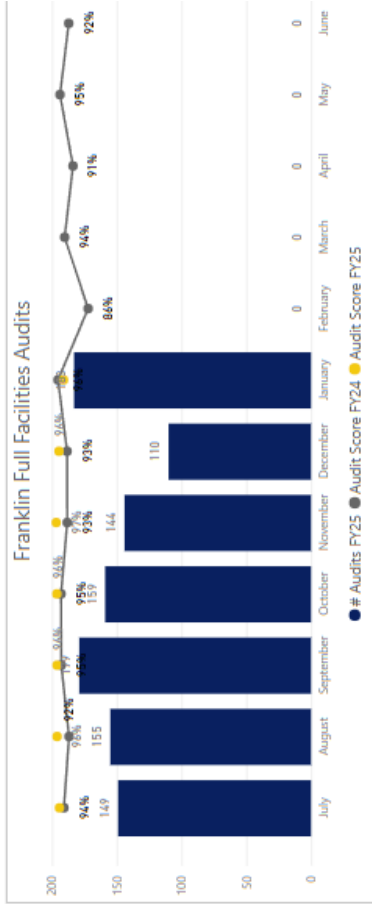
| Service Name                      | Number of Work Orders 24/25 |
|-----------------------------------|-----------------------------|
| Plumbing Maintenance Service      | 350                         |
| Structure Maintenance and Repairs | 283                         |
| Tree Maintenance - General        | 281                         |
| Carpentry Maintenance Service     | 250                         |
| Loose Litter Collection           | 169                         |

COMMENTARY

Tree maintenance and plumbing remain high for work order requests this month. Its expected that both of these services will remain in demand as we head closer to leaf fall and autumn.

Plumbing request are still ongoing at public toilets across Franklin as we continue to work alongside Healthy Waters to stay on top of ongoing issues. Structure maintenance and repairs incur higher work order counts during the summer, as increased park and reserve usage leads to both more reported issues and repairs being generated through increased wear and tear.

Audit Results



The highlights and lowlights of audits undertaken FY24/25 YTD are:

| Highlights YTD     | Lowlights YTD             |
|--------------------|---------------------------|
| Building Cleaning  | Hard Surfaces & Paths     |
| Sportsfields       | Street Garden             |
| Streetscapes Green | Tracks (incl. Structures) |
| Turf               |                           |
| Water Feature      |                           |

COMMENTARY

In recent months we've sustained excellent audit results in building cleaning and sports fields among other areas. While streetscape and turf results remain strong, we are focused on ongoing improvement. The summer's heat led to rapid growth in greenspaces, however our contractors were well-equipped to handle this challenge. We're closely monitoring and maintaining hard surfaces, pathways, street gardens, and tracks, with a focus on improving performance in areas and sites that had lower scores in recent audits.





## Maraetai Library

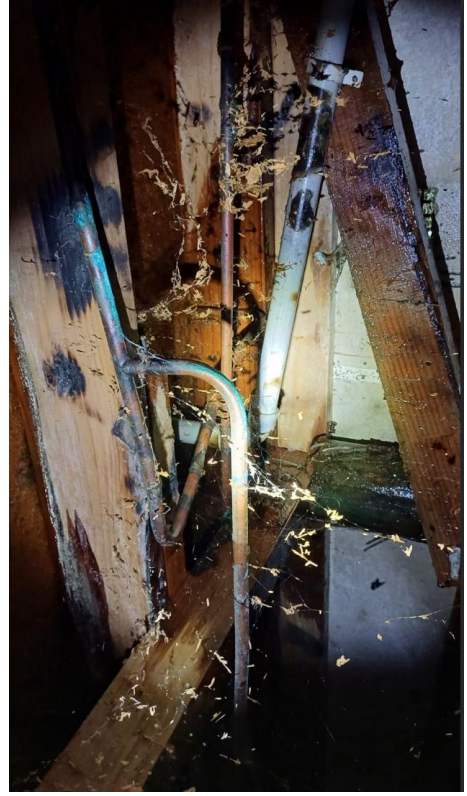
Following a call-out on February 12th, our full facility found that the chipboard flooring in both the kitchen and toilet areas had been compromised. Additionally, there was a strong odour of dampness throughout the building.

On conducting an underfloor inspection, it was discovered that the ground was saturated, and the source of the water was traced to a leaking copper pipe. This caused water to spray upwards, which contacted the chipboard floor, ultimately soaking the floorboards.

The rear section of the building is considered unsafe. Moisture testing under the floor revealed that approximately 50% of the area seemed unsafe, with moisture readings in the mid-30% range in areas further from the leak. Additionally, the fibreboard wall lining and shadow cladding suggest a significant indication of asbestos presence.

The contractor has already addressed the water leakage and completed the necessary repairs. The next steps will involve coordinating with the Auckland Council Insurance team to assess any damage and initiate a claim if possible. Furthermore, we will arrange for an asbestos survey report to be conducted on the building.

The operations team are closely working with libraries staff who will





## MAINTENANCE DELIVERY UPDATE

GREAT PLACES  
AUCKLANDERS LOVE  
PARKS & COMMUNITY FACILITIES

### Clarks Beach Swan Deaths

In recent weeks our full facility supplier has responded to two separate events of dead swans washing ashore along the eastern side of Clarks Beach.

With the potential for HPAI (highly pathogenic avian influenza, bird flu) to spread to New Zealand, internal teams and full facility suppliers have been gearing up and planning for a response should an outbreak be detected and a population of birds needs to be collected.

While the early advice from MPI surrounding the death of the swans at Clarks beach indicated that HPAI was extremely unlikely to be a cause of death, the event did nonetheless provide our teams an opportunity to rehearse response protocols and collection processes.

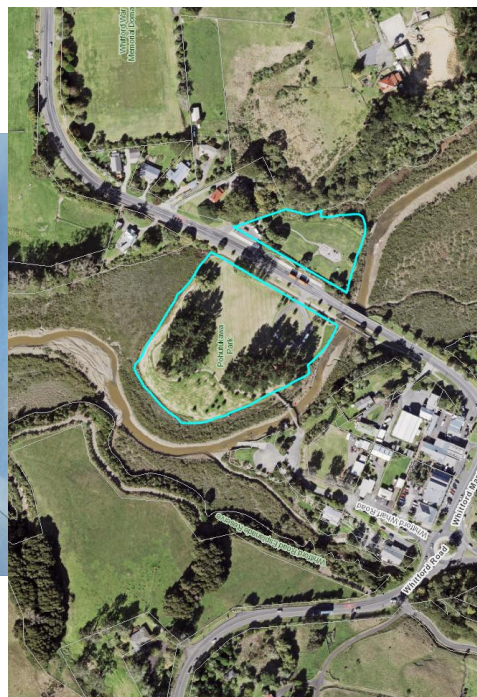
Sample birds were also collected as part of the process and delivered to a clinic for testing to be undertaken by MPI. While full results and a conclusive cause of death hasn't yet been confirmed, HPAI has thankfully been ruled out.





### Franklin Mobile Vendors

- Overlapping services/competition is a common comment that arises from all local boards in relation to requests from mobile traders to be operating on local parks. Some local boards are more lenient towards mobile traders, while others don't really allow them at all.
- Hibiscus and Bays local board have developed their own set of 'consideration factors' which are used by the board when considering any new licenses. This could be a good option for Franklin to ensure consistency and core principles are adhered to.
- In Franklin there is currently only one approved mobile vendor. This is the Hotdog truck at Pohutukawa Park which expires 21 May 2025.





COMMUNITY PARKS MANAGER OF DATE

GREAT PLACE  
AUCKLANDERS LOVE  
PARKS & COMMUNITY FACILITIES

Awhitu Social Club – Awhitu Landcare

The Community Park Ranger team, in collaboration with the Natural Environment Delivery Team, are supporting Awhitu Landcare to run a restoration project in the bush area backing onto the Awhitu Social Club.

The site has great native flora growing on it but there is some competition from invasive pest plants including woolly nightshade, tree privet and gorse which the volunteers intend to tackle over several working bees.

Once the pest plants are under control the intention is to infill the opened areas with plants grown by Awhitu Landcare at their nearby nursery.







**Paparata, Constellation Park and Beachlands Pump Track**

**Paparata Local Purpose Reserve**

Have Your Say Consultation period 25<sup>th</sup> February – 25<sup>th</sup> March (now open)

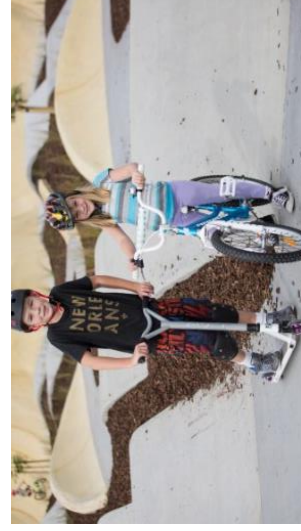
**Constellation Park, Beachlands Pump Track**

Have Your Say Consultation period 31<sup>st</sup> January – 28<sup>th</sup> February (now closed)

- Schools
- Te Puru Park
- 150 neighbour letter drop
- Onsite signage

Consultation Results – presented verbally

Business Report coming to the March Business Meeting for a decision



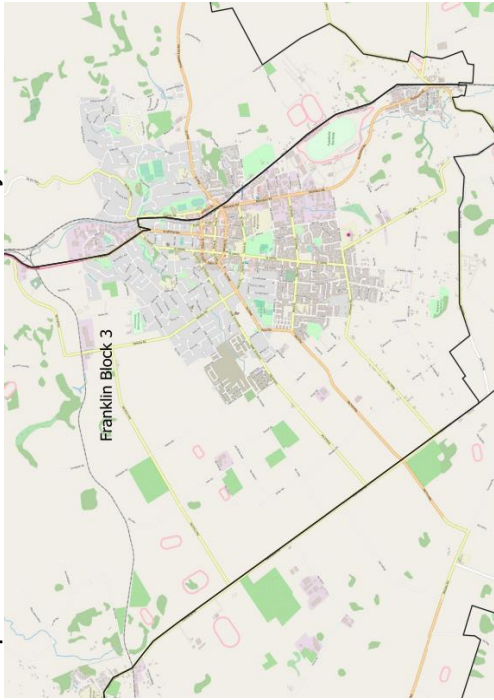


LANDSCAPE CULTURE OF DATE

GREAT PLACE  
AUCKLANDERS LOVE  
PARKS & COMMUNITY FACILITIES

Pukekohe- Block 3 Cyclic Maintenance

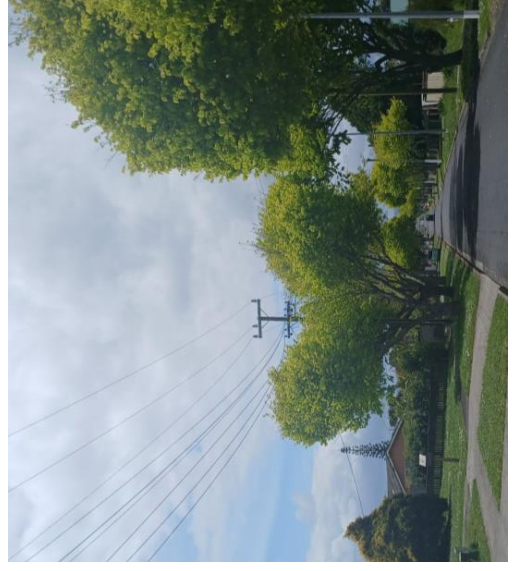
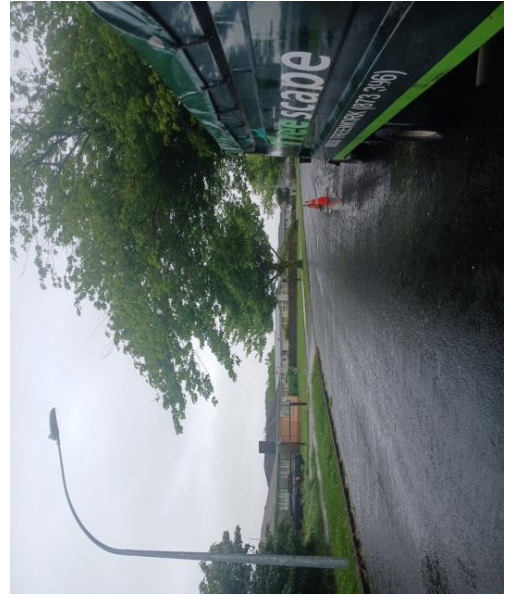
**Scheduled block work.** Crews have been working on ongoing cyclic scheduled maintenance in Franklin across the Pukekohe area. The approach has been to cover areas, street by street bringing trees up to the required road corridor specification and removing dead or compromised trees if / when necessary.



Wairua Place



Woodcroft Way





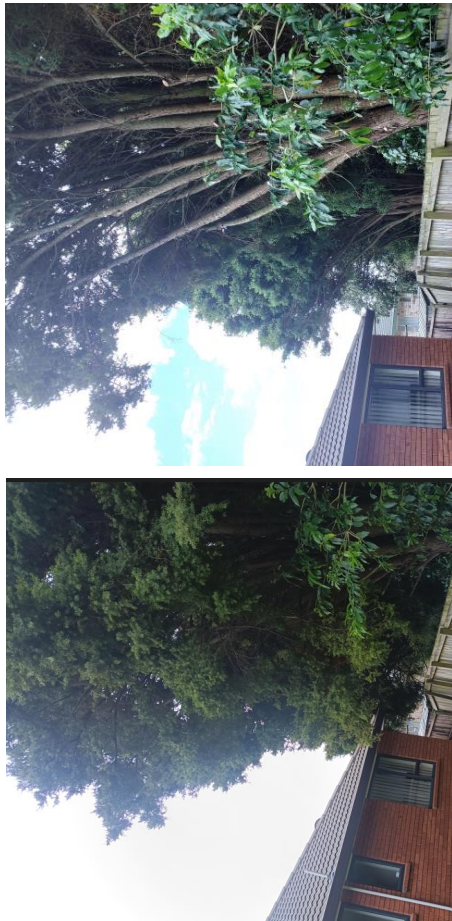
LANDSCAPE CULTURE OF DATE



Various Sites- Public Requests

GREAT PLACE  
AUCKLANDERS LOVE  
PARKS & COMMUNITY FACILITIES

**Wickeys Reserve, Pukekohe.** Numerous Totara trees encroaching over the reserve to a property on Ranch Place were cut back & used over the property to reduce encroachment and shading.



**Wassell Avenue, Pukekohe.** A group of eight Pin Oak trees were encroaching onto parking bays and footpaths. All trees were crown pruned & cut back to clear the carriageway to meet specifications.



**Bledisloe Park, Pukekohe.** Large Pin Oak with major decline throughout the canopy. Following an inspection by council's arborists and with no other option than removal, it was decided to pollard the canopy back to low branch collars to encourage new reactive growth with a long-term view of retaining the tree in a safe form. The tree will be monitored to see if it responds with new growth which can be managed, but only time will tell.

There were no obvious indications as to why the tree has declined so rapidly, but one possibility is prolonged root saturation (anaerobic soil) as the tree sits in a low spot and having been subject to extended periods of heavy rain last year.





























































































