

**Date:** Wednesday 5 March 2025  
**Time:** 10:00 am  
**Meeting Room:** Whau Local Board Office  
**Venue:** 31 Totara Avenue  
New Lynn

---

## Whau Local Board Workshop

### NOTES ATTACHMENTS

---

ITEM	TABLE OF CONTENTS	PAGE
	<b>Local Board Workshop</b>	
A.	Auckland Transport West Hub Bulletin - March 2025	3
B.	Presentation - Whau Local Board Transport Capital Fund 2023 - 2026	15
C.	Presentation - Corridor Improvement	31
D.	Presentation - Whau Grants Programme Review 2025/2026	49





# WEST HUB BULLETIN – WHAU LOCAL BOARD

## March 2025

### Introducing the Bulletin

The Bulletin is a monthly update to keep you informed about what happened in your area last month and about plans in the future.

### Local Impacts, Issues, Projects, and Local Board Views

It includes information about current projects being undertaken in the area, a list of projects that are being consulted about and other interesting information about the area.

#### Requested outcomes:

It is requested that the Whau Local Board take note of this update.

### Local Board Issues Being Investigated

The Local board have requested the following issues be investigated. These are still under investigation:

- West Lynn Rd re-seal completed. We did things differently this time, using finer three-quarter chip as opposed to the two-quarter chip being used previously. This is expected to hold up better going forward given the gradient at this location.
- Totara Ave lighting, escalated around lights still being on 24/7. Seeking more detail around the scope of the supposed lighting redesign, team planning to approach Local Board in second half of 2025.
- Totara Ave pavement reinstatement by Vector with correct composition, completed.
- Manawa Wetland storm damage under AT structural renewal budget. Have continued to seek estimate timeframes.
- Rizal reserve blocked kerb-cut into park pathways. Continue to work with team in potentially resolving some parking controls here.
- Stock St paper road. Further pushback, working with staff to find material to push forward.
- Blockhouse Bay bench seats. To be completed soon if not already. Updates sought.
- South Lynn raised feature removal, indicated estimate start of work in April 2025.
- Pedestrian signalised crossing on Veronica St, was live when I passed through on Saturday 1<sup>st</sup> March 2025
- Maioro Street dynamic lanes, works in progress as per recent updates. Currently the median is being used as a 4<sup>th</sup> lane whilst current works are undertaken. Other stages are likely to have other temporary changes whilst works are progressed. Team have done significant work around reducing impact as much as practical.

## Status of current LBTCF projects

- **Rosebank Road Signalized Crossing** outside school –  
No traffic modelling to be conducted as per ATOC advice. Next steps TBC.
- **St Georges Road Safety Improvements** near Jireh School –  
Public consultation ran until 28<sup>th</sup> February. Next steps TBC.

## Road Maintenance in Your Local Board Area

Below is list of maintenance works that will be carried out in your local board area. Please note that the start dates of these works can change due to weather conditions or other unforeseen circumstances.

Stormwater improvement	Rathlin Street (full road closure, Blockhouse Bay Road to Donovan Street)	Blockhouse Bay	Day shift only	19/02/2025	29/03/2025	Between 7am and 7pm
Stormwater improvement	Crudge Street (full road closure, Rathlin Street to Windermere Crescent)	Blockhouse Bay	Day shift only	19/02/2025	29/03/2025	Between 7am and 7pm
Stormwater improvement	Windermere Crescent (full road closure, Crudge Street to Exminster Street)	Blockhouse Bay	Day shift only	19/02/2025	29/03/2025	Between 7am and 7pm
Stormwater improvement	Exminster Street (full road closure, Blockhouse Bay Road to Rathlin Street)	Blockhouse Bay	Day shift only	19/02/2025	29/03/2025	Between 7am and 7pm

## Auckland Transport’s Traffic Control Committee (TCC) report

Decisions of the TCC during the last month affecting the Whau Local Board area are listed below:

Board	Location	Suburb	Description	Resolution ID	Nature of Restriction	Committee Decision
Whau – TCC meeting – 7 Feb 2025	Rosebank Road / Orchard Street	Avondale	Bus Stop / Footpath / Traffic Signal / Nsaat / Give-Way Control / Road Hump / Traffic Island / Lanes / No Stopping Off The Roadway / Surface Friction Treatment	18801	Permanent Traffic and Parking changes	Approved with Conditions

## Workshops held with the Whau Local Board

Auckland Transport have held the following workshops with the Local Board recently:

- Auckland Transport Update Report including Rosebank Special Vehicle Lanes and South Lynn Raised Table
- Local Board Transport Capital Fund

Upcoming:

- Great North and New North corridor plans

## Local Board Consultation for Proposed Improvements

Consultation documents for the following proposals have been provided to the Whau Local Board for its feedback and are summarised below for information purposes only.

After consultation, Auckland Transport considers the feedback received and determines whether to proceed further with the proposal as consulted on or proceed with an amended proposal if changes are considered necessary:

No projects under public consultation at time of this report.

## Consultation – Current Status – as of October 2024

Address	Proposal	Current Status
48A, 50 and 55A Rosebank Road	Improve bus stop infrastructure	Completed design phase. Construction has not started. Pending Rosebank SVL project.
73 Bollard Avenue	New bus shelter	Completed design phase. Construction has not started. Updates sought again.
80 Bollard Avenue	Upgrade Bus stop	Completed design phase. Construction has not started. Updates sought again.
Great North Road & Hepburn Road	Intersection upgrade	I've physically observed this project be constructed. Following up what happened around this one as don't recall any comms.
Maoro Dynamic Lanes	Dynamic Special Vehicle Lanes	Construction
Rosebank crossing	New crossing near school	TBC, no modelling to be performed per ATOC advice
Hepburn Rd crossing	New location of crossing / other improvements	Jan-Feb 2025 construction last indicated. Sought progress update.
Phelps PI and Hepburn Rd roundabout / crossings	Roundabout and uncontrolled crossing in WHLB, raised table crossing in HMLB.	Internal analysis on next steps.
Kinross bus layover	Potential new layover and bus stops / potential extended routes along Kinross	Consult was open to to Dec 2024. Result TBC.
Rosebank Special Vehicle Lanes	Bus lanes on Rosebank Rd, some increased parking restriction	Public consultation to begin soon
St Georges pedestrian crossing	Raised pedestrian zebra crossing	Public consultation concluded 28 <sup>th</sup> Feb 2025.

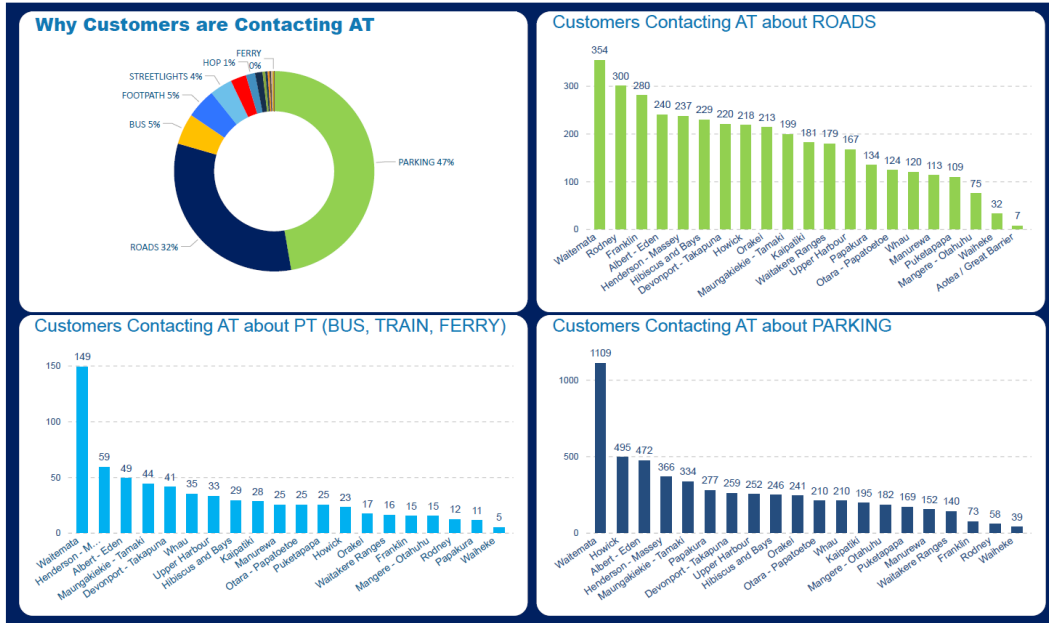
As requested by the Chairperson to have a list of all consultation that comes to the Local board their status. This list will be a moving list where projects will drop off once completed.

## Why Aucklanders contact Auckland Transport

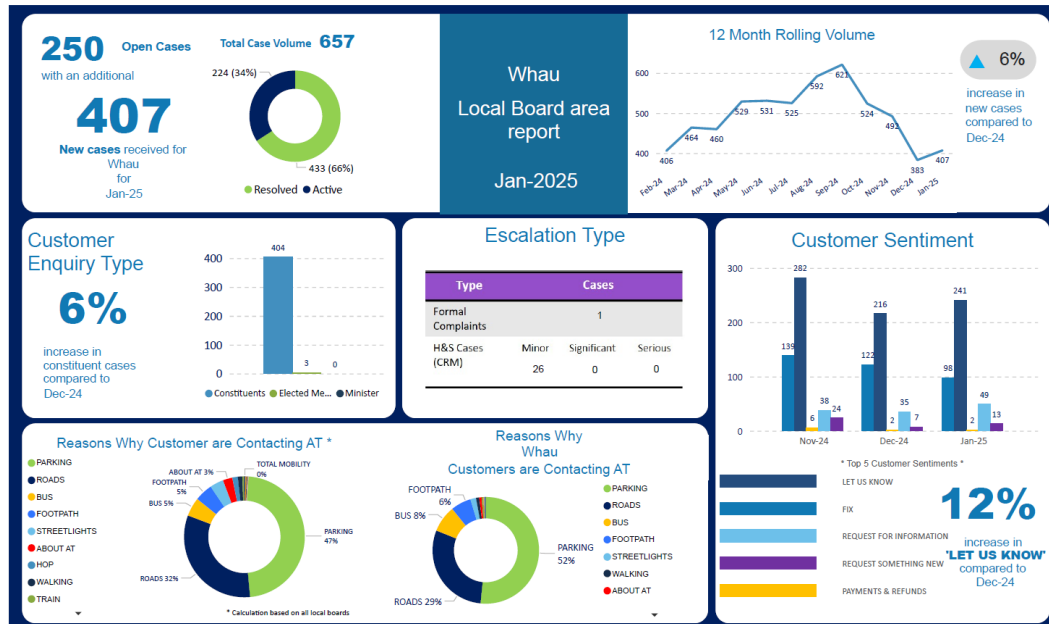
Below is a summary of the reasons why people are contacting Auckland Transport's customer service teams across all of Auckland. The data is summarised by issue and by how major issues like parking affect all of Auckland's local boards.

### Local customer activity

- This section tells you what people are contacting Auckland Transport about this month in this area. It is to help decision-makers see trends and to inform their planning.



In January 2025, 407 Whau residents contacted Auckland Transport, and their concerns are summarised below:



## Regional Updates – AT Board Digest

The Auckland Transport (AT) Board held its February meeting on 25 February 2025: there has been no summary on decisions made at this stage.

## Regional Updates – Media coverage of regional or Whau significance:

**Rail disruption:** We were asked about delays and cancellations to some rail services in late January. This was caused by an overhead power issue which was resolved quickly by KiwiRail. We co-ordinated with KiwiRail and each provided a response.

- [Auckland commuters face more train cancellations after month-long network closure | RNZ News](#)

**AT complaints decline:** [Auckland public transport complaints plummet, but public still critical of Auckland Transport - NZ Herald](#)

**Pukekohe Station:** Pukekohe train services began early February, with coverage from yesterday's event, media release, and interviews

- [Trains return to newly electrified Pukekohe Station](#)
- [Trains return to Pukekohe after two-year station closure | RNZ News](#)

**Ritchies bus contract:** [Ritchies gets richer, Kinetic stalls, and Pavlovich sold](#)

**Pothole Promise:** Local Government New Zealand magazine covered our Pothole Promise campaign – [Pothole promise KEPT](#)

**1 million contactless payments:** Some community newspapers ran the media release we sent out last month celebrating 1 million contactless payments.

- [Thanks a million mate \(whoever you are\)](#)

**Mayor Wayne Brown's Victoria Street video:** The Mayor posted a video on social media about a new cycleway being installed on Victoria St. We provided some background on the City Centre Masterplan and explained that this fills a gap in the city's cycle network, being delivered at the same time as road maintenance.

- ['Welcome to cones central': Auckland mayor Wayne Brown blasts roadworks and Auckland Transport | Stuff](#)



**Train cancellations and refunds:** TVNZ Breakfast have heard people using contactless payments are still getting charged when their train is cancelled, and they leave the station. We provided a statement from AT's Richard Harrison explaining that whether you're using a HOP Card or contactless payments, you need to tag off to cancel your trip to avoid getting charged. If you forget, you can request a refund.

**Proactive release to media - Motorists urged to look out for children as schools return:** We issued a release to media at 11am on Tuesday 11 February on how AT is working to get school children back to class safely. Includes info on Walking School Buses, and how to set one set up at your school.

**Mauro St:** An article was published with a balanced story on the work we are doing on Mauro St, which includes a response we sent yesterday from AT's Chris Martin, as well as positive comments from the local school which AT engaged with – [Motorists divided over dynamic lane project on major Auckland road | Stuff](#)

**CRL test train:** The first test train successfully travelled through the CRL tunnels last night. A joint release with KiwiRail was issued by City Rail Link Ltd on 13 February along with footage.

- [First test train travels through Auckland's City Rail Link](#)
- [First train runs through Auckland's City Rail Link - two months late - NZ Herald](#)
- [Auckland's City Rail Link successfully travels from Waitemata Station | RNZ News](#)
- [First train goes around full length of Auckland's CRL | RNZ](#)

**Level crossing removals:** Today the Government announced funding for the removal of level crossings in Takaanini and Glen Innes.

- [Govt commits \\$200m to help remove Auckland rail level crossings](#)
- [Government unveils plan to remove 'loathed' Auckland road barriers, speed up travel times when City Rail Link opens - NZ Herald](#)
- [Government puts up \\$200m to remove level rail crossings around Auckland | RNZ News](#)

**Busy school buses:** The Herald published this story today about issues on privately operated (not AT) school buses – [School bus swelter: West Auckland high school students endure stifling, crowded conditions - NZ Herald](#)

**Level crossings:** Stuff published a story about level crossings removals – [West Auckland city's 'poor cousin' as no funds to remove level crossings ahead of CRL opening | Stuff](#)

- Initially it did not include a statement we sent providing important context around why level crossing removals will not be needed on the Western Line until the 2030s, and how peak-direction frequency will be increased while maintaining similar barrier arm downtimes. We got the statement added later that morning.


**City centre parking consultation:** We put out a media release today encouraging feedback on proposed changes to on-street parking and kerbside spaces in the city centre: [Auckland transport asks public for feedback on kerbside space plans | RNZ News](#)

## Campaigns of regional or Whau significance

### Mix Your Go – Walk King Campaign (Phase 3)

<p><b>Purpose</b> <i>Summarise reason for the campaign.</i></p>	<p>Phase 1 of the Mix your go walking campaign launched in March 2024 and primed audiences to consider swapping out a car trip for walking if their destination was under 2km. The campaign tag line was 'If it's 10 mins away give walking a go.'</p> <p>Phase 2 of the campaign launched in July 2024 and continued to nudge people towards walking for short local trips and included several popular content creators to reach new audiences for the campaign. By far the most successful of the content creators was comedian Chris Parker with over 500 hours of watch time on Instagram across his content for the campaign.</p> <p>This third phase of the campaign will take this a step further in a full partnership with Chris Parker, presenting him as the 'Walk King' of local walks. The campaign will pair this concept with a number of accessible local trips to reframe our audiences thinking around how they get around their local neighbourhood. We want our audience to walk with purpose and unlock their local neighbourhood by foot.</p>
<p><b>What's happening?</b> <i>Description of campaign + background</i></p>	<p>We are launching this phase of the campaign across large format billboards and a showstopper bus wrap, primarily across central and north Auckland which have the best walking routes. Throughout the campaign Chris Parker will support the campaign with relatable content around why he walks as well as humorous skit based videos.</p> <p>Chris Parker (<a href="#">Instagram</a> / <a href="#">Tik Tok</a>)</p>
<p><b>Key messages</b> <i>What are our key messages?</i></p>	<ul style="list-style-type: none"> <li>• Rule your local walks like the Walk-King</li> <li>• Heading to the dairy, the park, the gym, or to grab a coffee? Walk there instead</li> <li>• Walking to the bus or the shops gets your steps up and avoids traffic and parking hassles</li> <li>• Mix your go</li> </ul>
<p><b>Target Audiences</b> <i>Who do we primarily want to reach?</i></p>	<p>Aucklanders 18+, generally under 35.</p>
<p><b>When is it in market?</b> <i>Dates when the campaign is live in market</i></p>	<p>The campaign commences on February 17<sup>th</sup> and runs through to the end of March.</p>
<p><b>Media Channels</b> <i>Creative channels the campaign will be shown through</i></p>	<ul style="list-style-type: none"> <li>• Billboards</li> <li>• Street furniture/Adshells</li> <li>• Double decker bus wrap</li> <li>• Instagram</li> <li>• Tik Tok</li> </ul>
<p><b>Creative</b> <i>Incl. images.</i></p>	<p>(next page)</p>

Bus wrap




Walk to the bus.  
More steps, less traffic

Rule your local walks like the Walk-King

A7

MIX YOUR GO

Billboards and street furniture



Skip leg day,  
walk to the gym

Rule your local walks like the Walk-King.

A7

MIX YOUR GO

Coffee run?  
Walk it

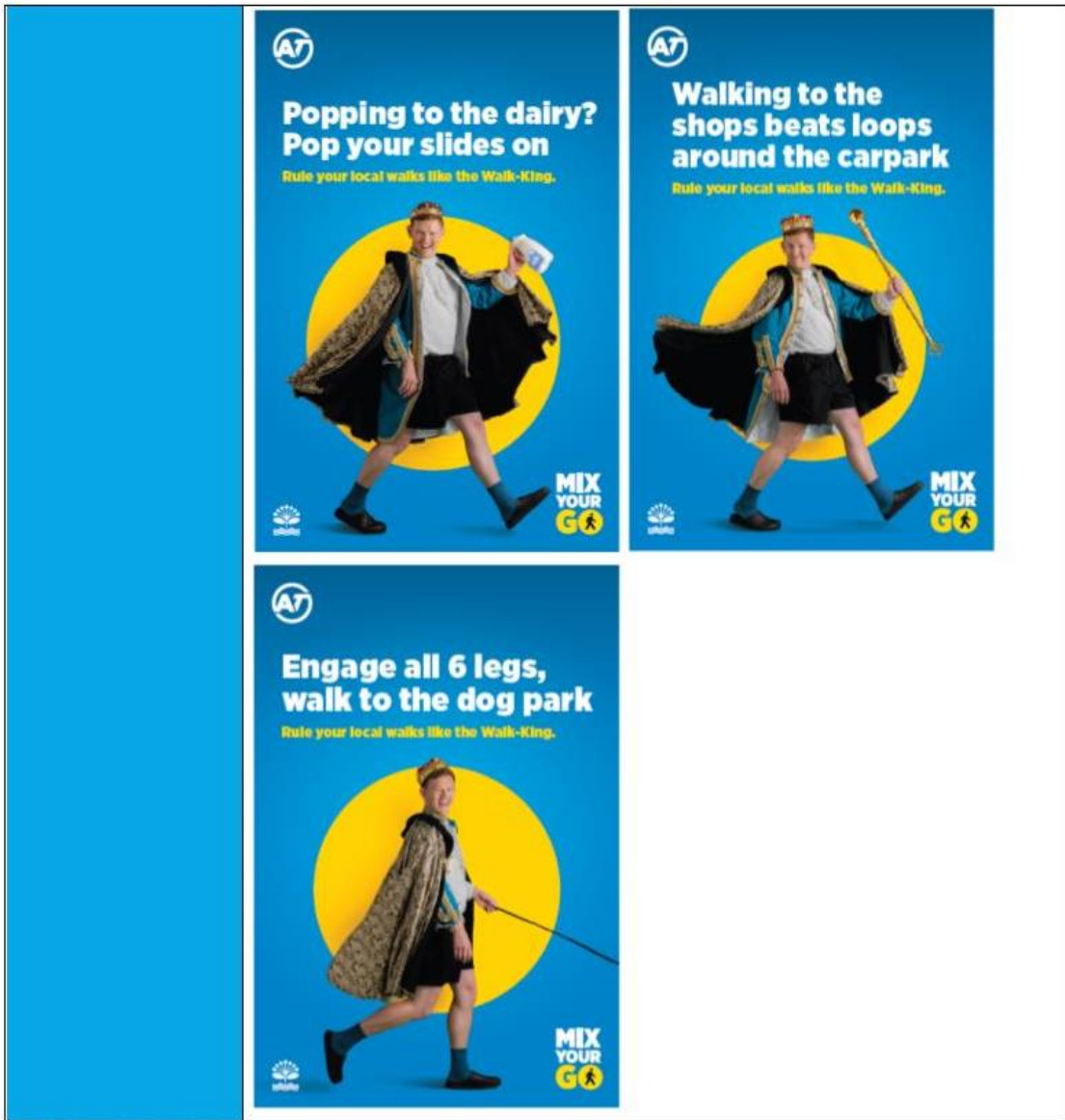
Rule your local walks like the Walk-King.

A7


MIX YOUR GO

Attachment A

Attachment A



Your city moving – parking

<b>Purpose</b>	<p>The 'Room to Move' strategy outlines how we plan to manage parking, and how managing parking contributes to a better transport system for Aucklanders. The strategy promotes more dynamic use of roads and streets so that road space can be used in different ways at different times of day, depending on travel demand.</p> <p>A campaign is needed to:</p> <ul style="list-style-type: none"> <li>• Tell the big picture story of Auckland's transformation and the challenges our city is facing and what AT is doing to keep our city moving.</li> <li>• Help Aucklanders understand that public spaces are valuable and need to be used differently, and how the parking management programme will allow Aucklanders to move freely</li> <li>• Connect and engage our audiences, driving awareness and understanding that AT has a holistic vision that will unlock a smooth and efficient transport network, why this is required, how it will be transformational for Auckland, and the benefits that they will receive from that.</li> <li>• Demonstrate how a city where all Aucklanders have the freedom to move around with a smooth, efficient, world class transport network is achievable.</li> <li>• Communicate through a benefit led approach: This space enables thriving communities, connection, movement, time, productivity, commerce. It allows the city and communities to flow.</li> </ul>
<b>What's happening?</b>	<p>In this campaign we reveal the valuable potential that exists in every parking space. The potential to connect people to what they need to keep moving, while being part of a bigger picture that keeps us all moving. Because that's not just a parking space, it's a vital dynamic public space that keeps life happening and your city moving.</p> <p>The campaign creative focuses on 4 key areas</p> <ul style="list-style-type: none"> <li>• Bus lanes</li> <li>• Transit lanes</li> <li>• Time restricted parking</li> <li>• Delivery spaces / zones</li> </ul>
<b>Key messages</b>	<ul style="list-style-type: none"> <li>• Parking and kerb side spaces, are spaces that keep our city moving             <ul style="list-style-type: none"> <li>◦ Paid parking spaces increase parking turnover to keep your city moving.</li> <li>◦ A space for parking is way more useful when it's a space for delivering</li> <li>◦ Parking spaces that transform into bus lanes keep our city moving</li> <li>◦ A space for parking can transform into a space for moving when they become transit lanes</li> </ul> </li> </ul>
<b>Communication platform</b>	
<b>Target Audiences</b>	Aucklanders 18+
<b>When is it in market?</b>	<p>w/c 10 February – 23 March 2025</p> <ul style="list-style-type: none"> <li>• Digital video (TVNZ+, ThreeNow, Neon, YouTube)</li> <li>• Radio</li> <li>• Bus shelters and digital billboards (starting on 17 February)</li> </ul>
<b>Media Channels</b>	<ul style="list-style-type: none"> <li>• Meta and Tiktok (starting on 24 February)</li> <li>• Bus backs and sides (starting on 24 February)</li> </ul> <p>Campaign ends Sunday 23 March 2025</p> <ul style="list-style-type: none"> <li>• Social video (Meta and TikTok)</li> <li>• Billboards</li> <li>• Bus shelters</li> <li>• Bus backs &amp; sides</li> <li>• Radio</li> <li>• Digital video - TVNZ+, ThreeNow, Neon, YouTube</li> <li>• Website: <a href="http://at.govt.nz/yourcitymoving">at.govt.nz/yourcitymoving</a> (live Monday 10 Feb)</li> </ul>





**Whau Local Board**  
**Local Board Transport Capital Fund**  
**2023 - 2026**

12<sup>th</sup> February – Workshop 6

Think before you print



# Purpose of today

- Update on the budget that was recently confirmed in November 2024.
- Recap and Update on previous local board resolved projects.
- To discuss some new potential projects that were identified during FWP workshops
- Recommend projects to prioritise for the remaining two financial years of 3-year term
- Direction from the local board for the business meeting





# Update on budget for this term

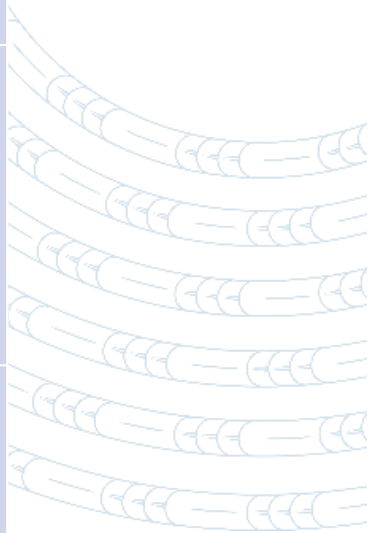
- Last year, the total budget for all local boards was reduced from the indicative budget of **\$45m** to **\$29.5m** for the 3-year term. Now this budget has been increased to **\$48.7m** of which **\$17m** is approved for the current FY25 and **\$20.4m** is endorsed for FY26.
- This means that an indicative budget for the local board has been increased from **\$1.382m** to **\$2.039m** for the 3-year term. Note that the previous budget was already allocated by the board on their current active project, see resolutions in appendices.
- Therefore, an indicative additional budget of **\$657k** is now available to the board for the remainder of the 3-year term.



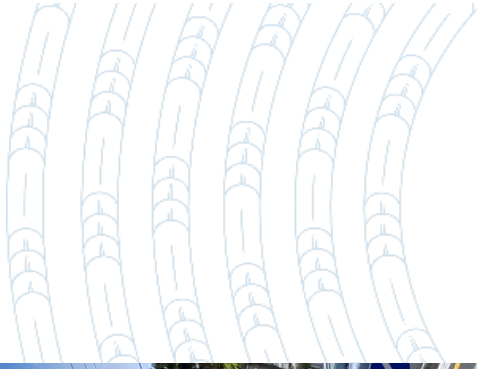
Attachment B

# Recap and Update on projects to deliver in 3-year term

Projects	Resolved Budget + AT Approved budget	Project Status	Cost Savings	Funding required to be resolved to complete the project
South Lynn Road improvements	\$359,600.00	Construction	TBC by the PM following monitoring results	
Hepburn Road improvements	\$250,000.00	Detailed Design	-	-
St Georges Road Pedestrian crossing	\$375,000.00	External Consultation	-	-
Rosebank Road Pedestrian crossing	\$380,000.00	Detailed Design	-	-
Godley Road crossing improvements	\$17,532.00	Completed	-	-



# Goaley Road crossing improvements - completed



Attachment B

# Contingency Projects and other Project Ideas as per the Forward Works Engagement Programme workshop

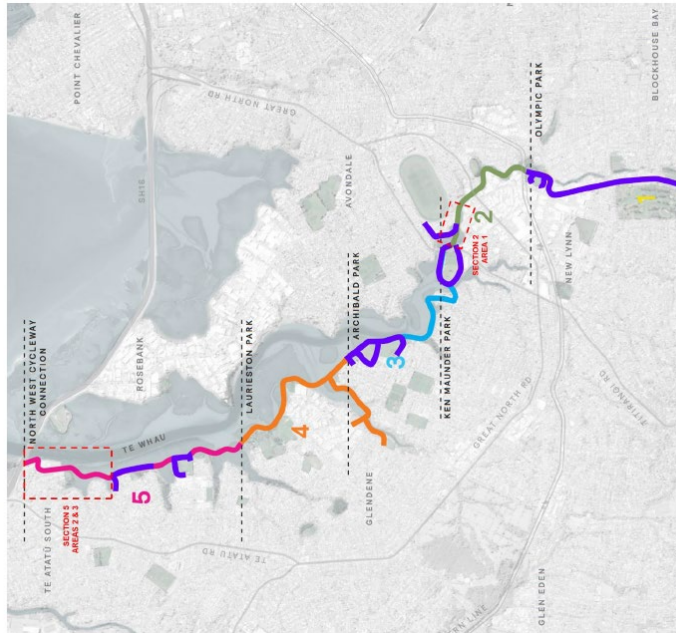
Note: Projects ideas have been collated with in conjunction with other AT capital programmes.





**Te Whau Pathway**

Project Name	Address	Project origin if known	Project Description/ Comments/ History	Cost estimate including design
Wayfinding Te Whau Pathway	Queen Mary Reserve - 50 Queen Mary Avenue, New Lynn Archibald Park - 109 Archibald Road, Kelston	Local board/ Councillor request	Resolution number WH/2024/17 "prioritise wayfinding to connect finished portions of Te Whau Pathway e.g. from Queen Mary Reserve to Archibald Park to be funded from any cost savings or alternative funding that becomes available."  Local board, to confirm whether the request is for wayfinding signage within the reserve/ park or on AT roads leading to these parks? Te Whau Pathway overview AC, note for the picture below. Section 2 has been descoped from the current physical works due to budget constraints, i.e. only Section 5 - Areas 2 & 3 have funding. Te Whau Pathway Overview Map	\$100,000



# Attachment B



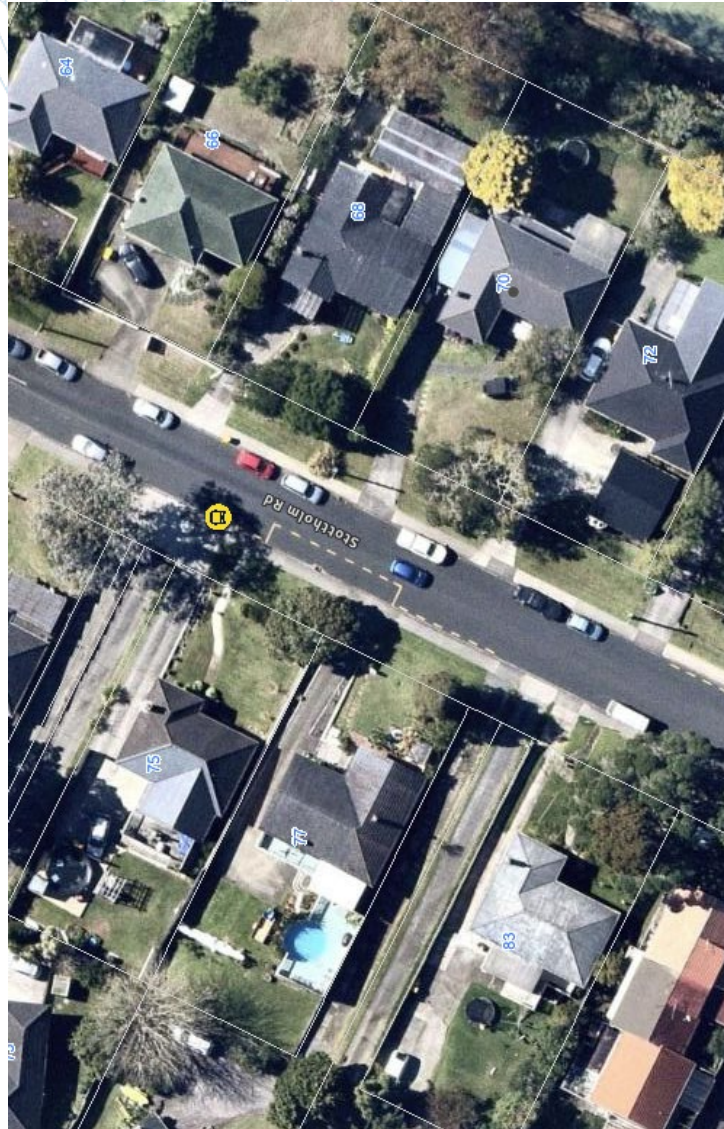
Project Name	Address	Project origin if known	Project Description/ Comments/ History	Cost estimate including design
Godley Road pedestrian improvements	131 Godley Road, Green Bay	School request	<p>Godley Road- The school request is for the relocation and upgrade of the existing crossing to a raised crossing outside Green Bay Primary School. There are 4 options considered.</p> <p>Option 1: \$630,500. Relocated zebra crossing on a speed table, parking bays and pedestrian refuge removal.</p> <p>Option 2: \$1,352,000 Two mini roundabouts with two raised zebra at each of these intersections: Castlefold St/ Stottholm Rd/ Godley Rd &amp; Godley Rd/ Avonleigh Rd intersections</p> <p>Option 3: \$845,000 Speed tables on La Rosa St and Cajero Place near the intersection of these streets</p> <p>Option 4: \$17,532 New signs and marking to complement future Variable speed limit changes, was funded by the local board and are now completed.</p> <p>AT reps and LB members had a meeting with Green Bay Primary School who outlined various issues associated with illegal u-turns along school frontage, parking behaviour, speeds of vehicles travelling down Godley Road. The request is to make improvements to the existing crossing facility outside the school by relocating it and upgrading it to a raised table zebra crossing and upgrading the footpath and some parking bay changes in the vicinity of the new crossing. Proposed speed limit changes – Variable 30 km/hr.</p>	<p>Option 1: \$630,500</p> <p>Option 2: \$1,352,000</p> <p>Option3: \$845,000</p> <p>Option 4 (completed) \$17,532</p>





**TIJUVA IUAAR**

Project Name	Address	Project origin if known	Project Description/ Comments/ History	Cost estimate including design
Whau Bus stop upgrade	75 Stottholm Road, Titirangi	Public request	Bus Stop 1649 - 75 Stottholm Road, Titirangi. The request is to provide a new bus shelter at this location. - \$60,000	\$60,000



# Attachment B



Project Name	Address	Project origin if known	Project Description/ Comments/ History	Cost estimate including design
Nikau Street pedestrian improvements	63 Nikau Street, New Lynn (outside Manuka Park)	Public request	The request from the community is to provide a crossing facility on Nikau St outside Manuka Park. There are bus stops located nearby and existing pedestrian demand. The scope of the project is to provide a raised zebra crossing at this location to also slow vehicle speeds in the vicinity of the park.	\$375,000































































































