

Date: Thursday 6 March 2025
Time: 10.00am
Meeting Room: Local Board Office
Venue: 560 Mt Albert Road
Three Kings

Puketāpapa Local Board Workshop

OPEN ATTACHMENTS

ITEM	TABLE OF CONTENTS	PAGE
3	Local Board Workshop	
	A. Attachment A: Item 3. Auckland Transport (AT) Corridor Plans	3

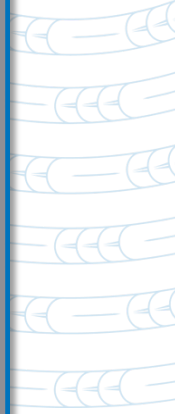
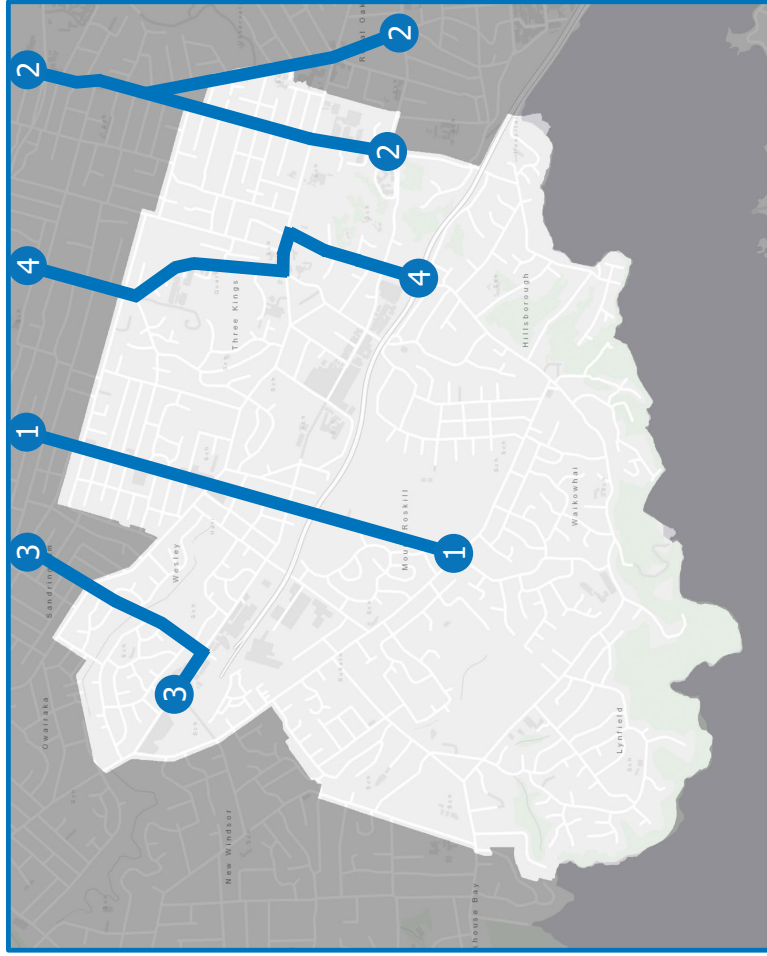
Workshop Purpose

In December, the AT Network Optimisation Programme informed you of the corridor studies which were underway during the Forward Works Programme. AT committed to informing the Local Board about these studies as part of Kōkiri. Today we:

- Provide an update on our findings of these corridor investigations
- Seek feedback on the issues identified and our proposed solutions

Legend

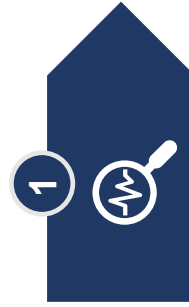
1	Dominion Road Corridor Productivity Improvements
2	Manukau-Pah Road Corridor Productivity Improvements
3	Sandringham Road Corridor Productivity Improvements
4	Mt Eden Road Corridor Productivity Improvements



Background

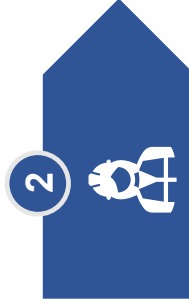
- Part of the Auckland Network Optimisation Programme
- Seeks to enhance road space productivity (move more people) or improve efficiency (reduce congestion)
- Focuses on low to medium cost, quick improvements including infrastructure and technology

Summary of Work Done



Data Review

Reviewed relevant data including speed, travel time, bus, crash and productivity for all periods including weekends.



Site Visit

Site visit undertaken to confirm and identify issues highlighted by data review.



Issues Identified

Corridor issues identified related to operations and safety by time of day.



Potential Options

Potential options for issues were assessed against various criteria.



Dominion Road Corridor

Puketāpapa Local Board



6 March 2025

Think before you print

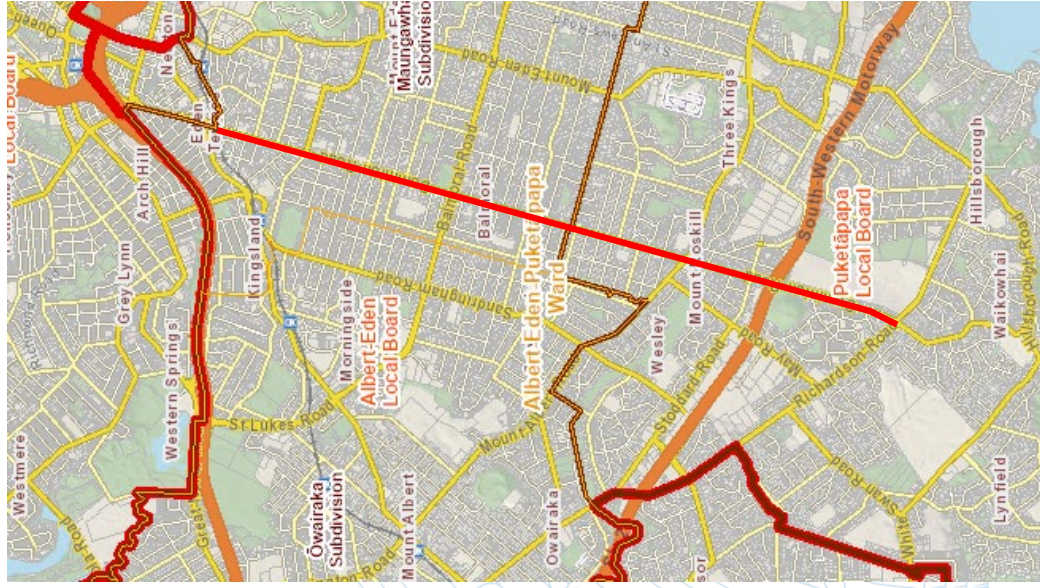
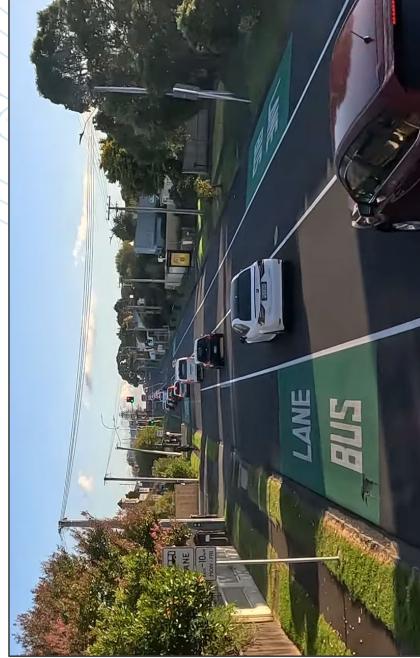
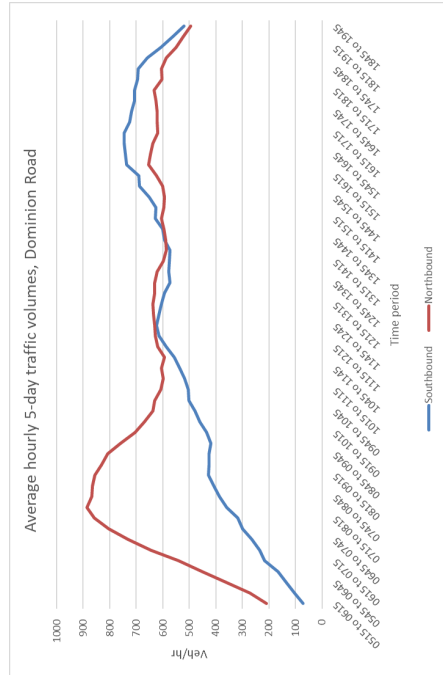
Purpose

1. Inform the Local Board on the Dominion Road Corridor Study
2. Seek feedback from the Local Board on the findings
3. Seek endorsement from the Local Board for AT to begin public engagement for two projects
 - Memorial Ave / Dominion Road improvements
 - Changing the Southbound Bus Lane operating hours to 3-7pm



Dominion Road Study Area

- From New North Road to Richardson Road
- Key corridor for buses, pedestrians, cyclists and general traffic
- Carries over 3,000 people in both directions (2 hours AM peak)
 - 40 buses per hour north of Balmoral Road
 - Bus lane carries 54% (2,400 people) in the 2 hours AM peak northbound direction
 - Up to 1,400 vehicles per hour
- Three local centres (Valley Road, Balmoral and Mt Roskill)
- Business - Mixed Use Zone, north of Memorial Ave
- Eden Park events



General Findings & Key Issues

Delays occurring

- Weekdays:
 - ❖ AM peak northbound mainly 8-9am ~ 6 mins
 - ❖ PM peak southbound 3-7pm ~ 8 mins
- Weekends:
 - ❖ Both directions 11am to 8pm ~ 5 mins
 - ❖ Both directions ~ 15 mins
- Events:
 - ❖ Both directions

Main Causes

- Side friction – side roads, kerbside parking, pedestrians crossing
- School related traffic – 3 to 4pm
- Localised bottlenecks / intersections / town centres
 - ❖ Valley Road intersection
 - ❖ Balmoral Road intersection, shopping area and lack of right turn bays
 - ❖ View Road / George Street intersection
 - ❖ **Mt Albert Road intersection**
 - ❖ **Memorial Avenue intersection**
- Delays at bus stops, poor layouts, short distances between stops

Investigation Outcomes

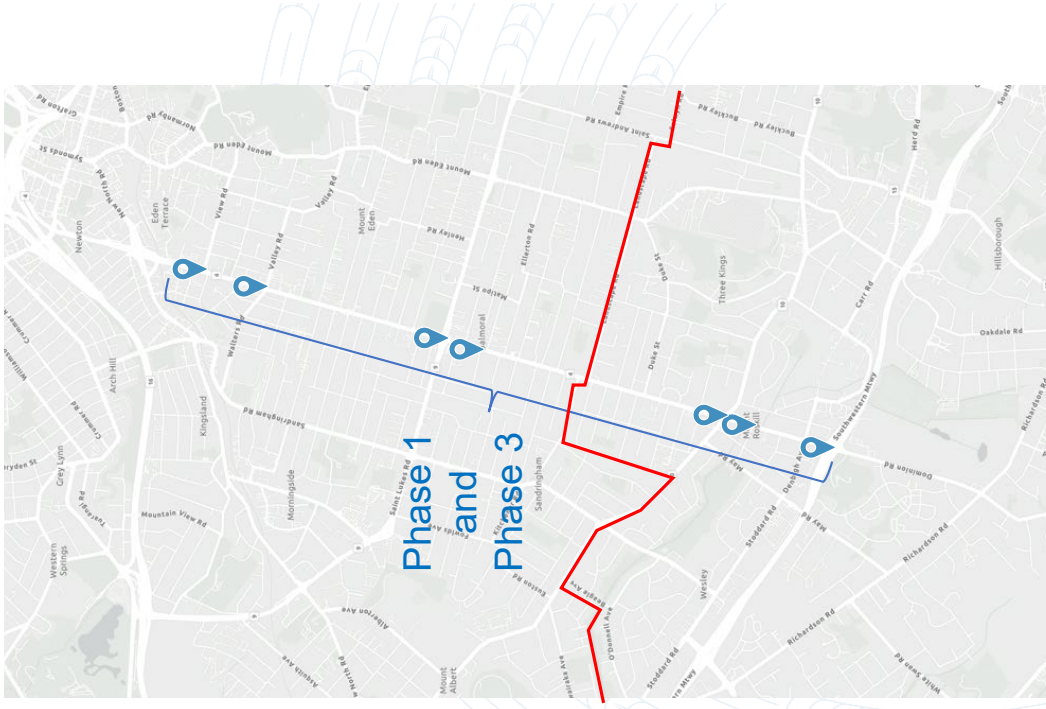
11 optimisation opportunities identified

Phase 1 – immediate implementation

1. AT Operating Centre to implement traffic signal optimisation and phasing efficiency changes
2. Enhanced 'Bus Booster' traffic signal operation

Phase 3 – Projects for future implementation

9. Event bus lane operating hours - enable bus lanes to operate during events
10. PM both directions bus lane operating hours - bus lanes to operate in both directions during the PM peak
11. Weekend bus lane operating hours - bus lanes to operate during busy periods on weekends



Investigation Outcomes

Phase 2 – projects to be developed for implementation in the short term

3. Balmoral Shops - Ban right turn movements at Wiremu Street
4. View Road / Dominion Road - intersection efficiency improvements
5. Memorial Ave / Dominion Road improvements - Continuous bus lanes in both directions, remove the northbound and southbound right turn lanes
6. Denbigh Ave / Dominion Road new traffic signals and south of SH20 extend northbound bus lane closer to the SH20 interchange
7. Bus lane operating hours - adjust times to better align with periods of congestion - extend the southbound bus lane hours to 3-7pm (currently 4-7pm)
8. Rationalise the number of bus stops to improve spacing and improve bus stop layouts to improve dwell times

