

**Date:** Thursday 6 March 2025  
**Time:** 10.00am  
**Meeting Room:** Reception Lounge  
**Venue:** Auckland Town Hall  
 301-305 Queen Street  
 Auckland

## Te Komiti mō te Tūnuku, mō te Manawaroa me te Tūāhanga / Transport, Resilience and Infrastructure Committee

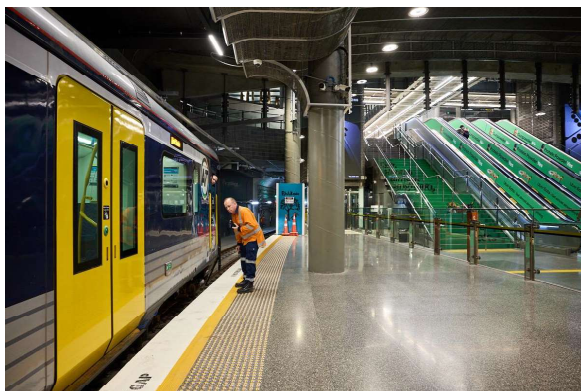
### OPEN MINUTE ITEM ATTACHMENTS

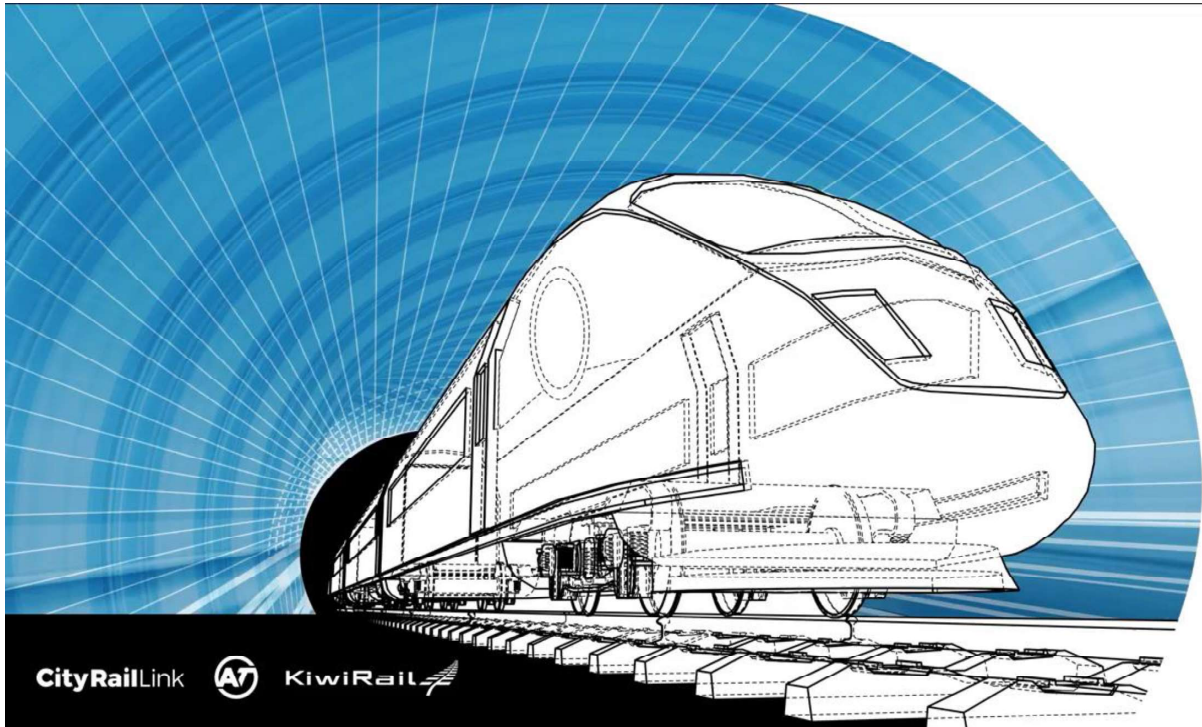
<b>ITEM</b>	<b>TABLE OF CONTENTS</b>	<b>PAGE</b>
<b>8</b>	<b>City Rail Link Ltd Update - March 2025</b>	
	A. 6 March 2025, Transport and Infrastructure Committee, Item 8 - City Rail Link Ltd Update - March 2025, presentation	3
<b>10</b>	<b>Public Transport Operating Costs and Farebox Recovery</b>	
	A. 6 March 2025, Transport and Infrastructure Committee, Item 10 - Public Transport Operating Costs and Farebox Recovery, presentation	13
<b>11</b>	<b>Healthy Waters and Flood Resilience delivery programme update – March 2025</b>	
	A. 6 March 2025, Transport and Infrastructure Committee, Item 11 - Healthy Waters and Flood Resilience delivery programme update – March 2025, presentation	17
<b>12</b>	<b>Watercare Update - March 2025</b>	
	A. 6 March 2025, Transport and Infrastructure Committee, Item 12 - Watercare Update - March 2025, presentation	25





## First Test Train – 12 February





## HS&W performance commentary

### What's going well

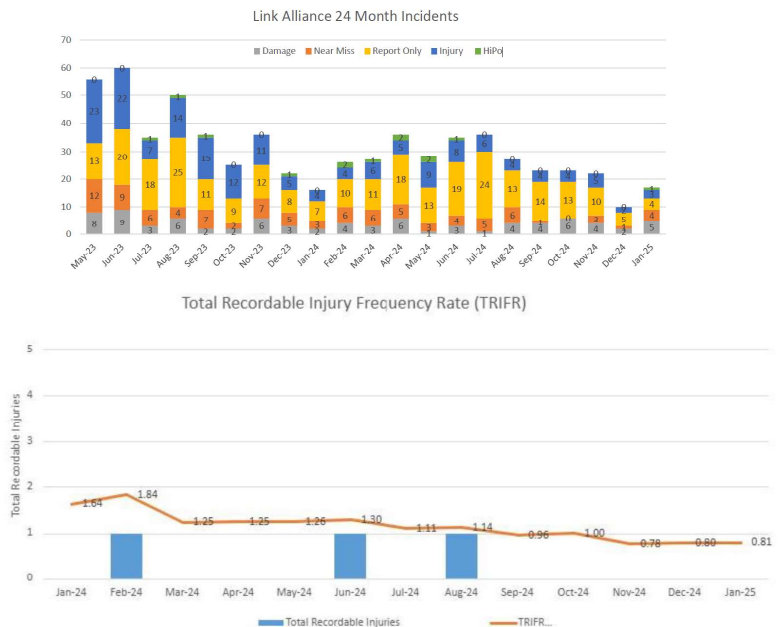
- Safe close down and restart over Christmas period
- LKA Safety Team preparedness for OHLE energisation and dynamic testing

### What we're focussed on

- OHLE energisation and dynamic testing
- Critical Risk management

### Recent learning events

- Energisation of a LV board – not isolated



## General update

- Energisation of overhead line and first train running February 2025
- Construction over 90% complete
- Link Alliance target project completion by December 2025 (one month slippage versus PDA)
- KiwiRail Rail Network Renewal BOL December to January 2026
- Overall project tracking within the agreed funding envelope
- Station fit out and systems target completion by mid-2025
- Station entrances will complete within Q2 2025 for all three stations
- Targeted Hardship Fund remains open but with materially less disruption
- Emergency services preparations well advanced
- Testing and commissioning underway – over 9,000 tests to complete

CityRailLink

## Tunnel Ventilation System – in testing



CityRailLink



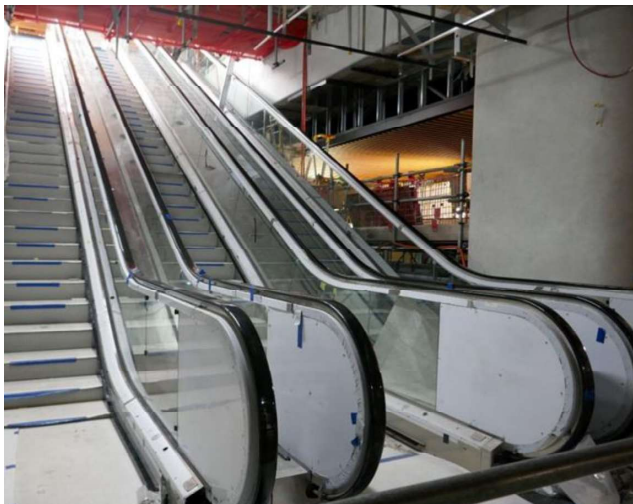
## Karanga-a-Hape



FITOUT		CIVILS	
Electrical	91%	Civils	98%
Mechanical, fire, ventilation	87%	Utilities	94%
Architectural	78%	Urban Realm	40%

CityRailLink

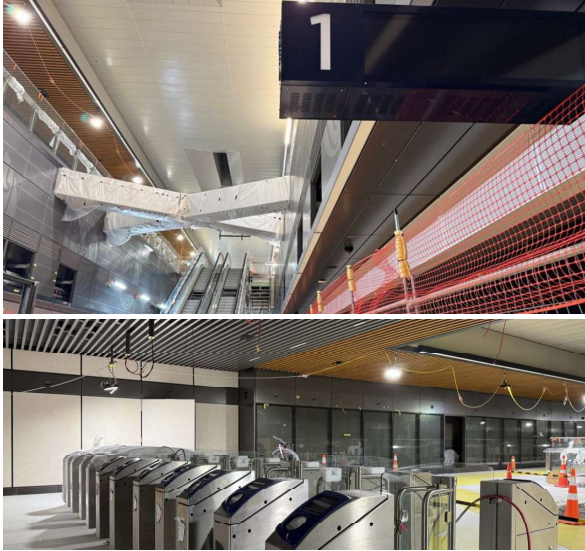
## Karanga-a-Hape



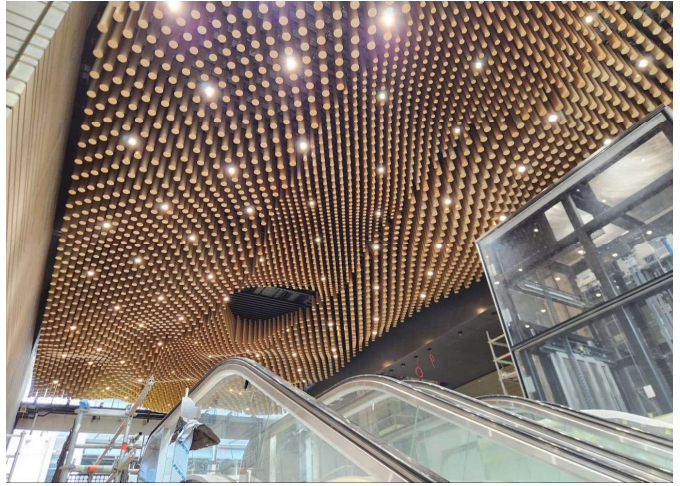
CityRailLink



## Te Waihorotiu



CityRailLink



FITOUT		CIVILS	
Electrical	93%	Civils	98%
Mechanical, fire, ventilation	96%	Utilities	97%
Architectural	96%	Urban Realm	62%

Item 8

Attachment A

## Te Waihorotiu



CityRailLink





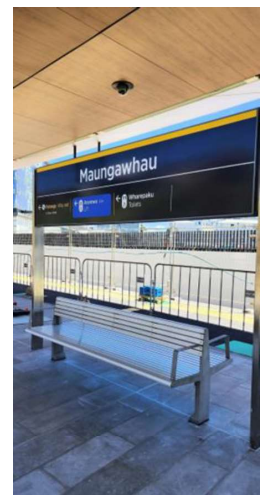
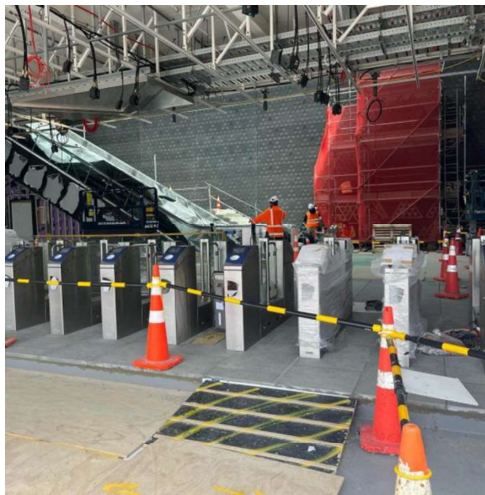
## Maungawhau



FITOUT		CIVILS	
Electrical	88%	Civils	98%
Mechanical, fire, ventilation	96%	Utilities	94%
Architectural	89%	Urban Realm	58%

**CityRailLink**

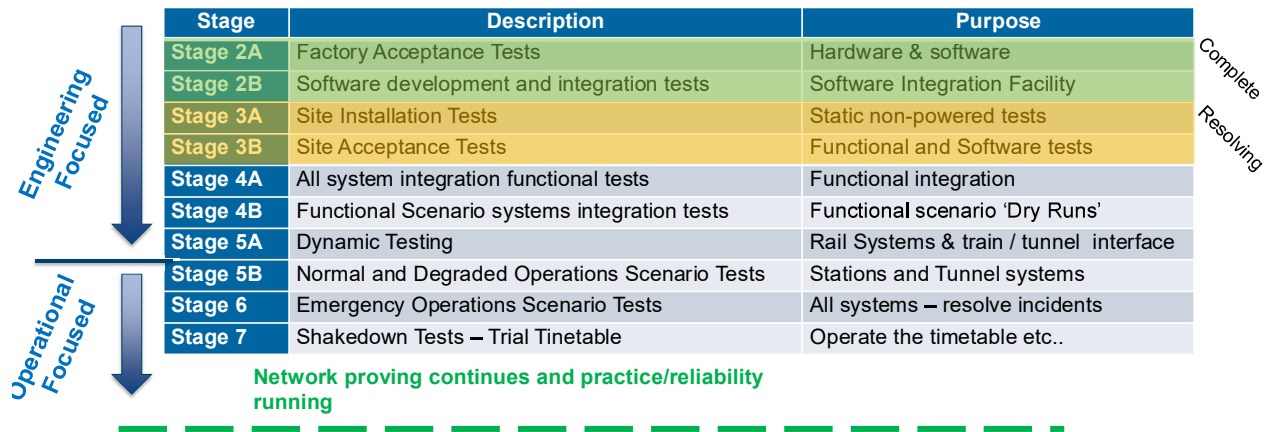
## Maungawhau



**CityRailLink**

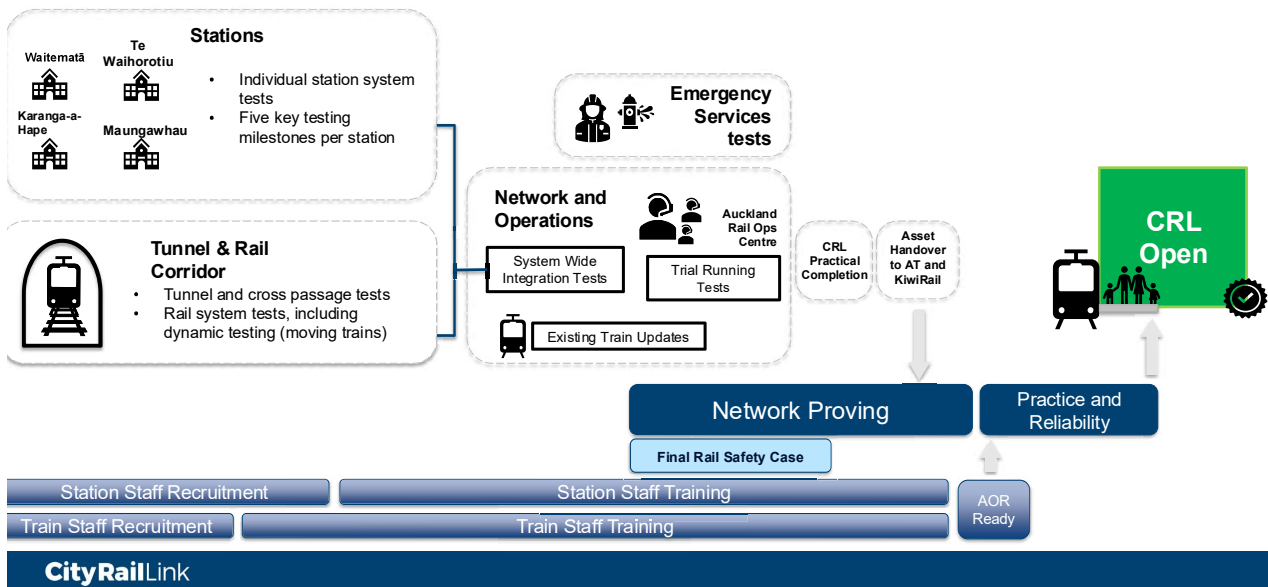


## General Stages of Testing



### CityRailLink

## Testing and Commissioning Roadmap



### CityRailLink























































