

**Date:** Tuesday, 11 March 2025  
**Time:** 9.00am  
**Meeting Room:** Manukau Chambers  
**Venue:** West Annex  
Manukau Service Center  
Manukau

---

## Ōtara-Papatoetoe Local Board Workshop

### OPEN AGENDA

---

#### MEMBERSHIP

<b>Chairperson</b>	Apulu Reece Autagavaia
<b>Deputy Chairperson</b>	Vi Hausia
<b>Members</b>	Dr Ashraf Choudhary, QSO, JP Dr Ofa Dewes, MNZM Topou Folau Li'amanaia Lorenzo Kaisara Albert Lim

(Quorum 4 members)

**Darshita Shah**  
**Democracy Advisor**

**6 March 2025**

Contact Telephone: +64211062942  
Email: [darshita.shah@aucklandcouncil.govt.nz](mailto:darshita.shah@aucklandcouncil.govt.nz)  
Website: [www.aucklandcouncil.govt.nz](http://www.aucklandcouncil.govt.nz)

<b>ITEM</b>	<b>TABLE OF CONTENTS</b>	<b>PAGE</b>
<b>1</b>	<b>Ngā Tamōtanga   Apologies</b>	<b>2</b>
<b>2</b>	<b>Te Whakapuaki i te Whai Pānga   Declaration of Interest</b>	<b>2</b>
<b>3</b>	<b>Local Board Workshop</b>	<b>3</b>

## **1 Ngā Tamōtanga | Apologies**

At the close of the agenda no apologies had been received.

## **2 Te Whakapuaki i te Whai Pānga | Declaration of Interest**

Members are reminded of the need to be vigilant to stand aside from decision making when a conflict arises between their role as a member and any private or other external interest they might have.

## Local Board Workshop

File No.: CP2025/00425

Note 1: This workshop has been called by the chairperson in consultation with the staff.

Note 2: No working party/workshop may reach any decision or adopt any resolution unless specifically delegated to do so.

### Te take mō te pūrongo Purpose of the report

1. To present the Ōtara-Papatoetoe Local Board workshop agenda for 11 March 2025.

### Whakarāpopototanga matua Executive summary

2. Workshops are open by way of recording the session and making the recording available after the workshop.
3. Some sessions may not be open to the public. The staff / chairperson and deputy chairperson decide which sessions are open to the public, depending on the sensitivity of the information being discussed. If a session is not open, a reason will be provided below.
4. Workshops will be recorded and a link to the recording will be included in the published documents.
5. Local Board workshops provide an opportunity for local boards to carry out their governance role in the following areas:
  - a) Accountability to the public
  - b) Engagement
  - c) Input to regional decision-making
  - d) Keeping informed
  - e) Local initiative / preparing for specific decisions
  - f) Oversight and monitoring
  - g) Setting direction / priorities / budget.
6. Workshops do not have decision-making authority.
7. Workshops are used to canvass issues, prepare local board members for upcoming decisions and to enable discussion between elected members and staff.
8. Members are respectfully reminded of their Code of Conduct obligations with respect to conflicts of interest and confidentiality.
9. The following will be covered in the workshop: -

#### Session 1 – 9.05am - 9.35am

##### Ecological Restoration Contract (Workline #974)

Presenter/s: Jillana Robertson

Purpose: Keeping informed

Governance role: Define opportunities / potential approach

Proposed Outcome/s: To introduce Ecological Restoration Contract (ERC) to local board members and highlight where the work is being done in their area, and to propose special projects that the local board may want to fund.

Attachment/s:	Attachment A – Ecological Restoration Contract
<b>Session 2 – 9.35am – 10.05am</b>	
<b>Development Contributions 2025 proposal</b>	
Presenter/s:	Tracey Wisnewski, Andrew Duncan (Manager Financial Policy), Hao Chen and team (Manager LB Financial Advisory)
Purpose:	To assist local boards and help them provide feedback on the draft Contributions Policy 2025 public consultation and feedback held in September to December 2024.
Governance role:	Input to regional decision-making
Proposed Outcome/s:	Define board position and feedback
Attachment/s:	Attachment B – Funding Growth Infrastructure - Proposed Government Reforms Contribution Policy 2025
<b>Session 3 – 10.05am – 11.05am</b>	
<b>Implementation of the Ōtara-Papatoetoe Sport and Active Recreation Facilities Plan</b>	
Presenter/s:	Kieran Nevey (Sport & Recreation Lead)
Purpose:	Oversight and monitoring
Governance role:	Confirm priorities
Proposed Outcome/s:	Seek direction on grant recommendations to support community led projects identified within the plan. Clear direction of what projects elected members would like to support.
Attachment/s:	Attachment C – Sport and Active Recreation Facilities Plan
<b>Break (11.05am – 11.20am)</b>	
<b>Session 4 – 11.20am – 11.50am</b>	
<b>Auckland Transport - Parking services update</b>	
Presenter/s:	Jennifer Fraser, John Strawbridge (Grp Manager Parking Services), Peter Barfoot (Parking Compliance Area)
Purpose:	Keeping informed
Governance role:	Define opportunities / potential approach
Proposed Outcome/s:	AT to provide clarity on LPR technology update and allow local board members to ask questions of the parking team.  Local Board members gain a clear understanding of how and where the LPR vehicles will operate in the local board area.
Attachment/s:	Attachment D - Parking Services Update

**Session 5 – 11.50am – 12.30pm**

**Community Wellbeing – Safe and Resilient Communities (Work Line 328)**

Presenter/s: Fereti Lualua (Fereti Lualua), Liz Muliaga (Manager Community)

Purpose: To get direction from the Local Board on what they are wanting to see delivered in the new financial year for safety in Otago-

Governance role:

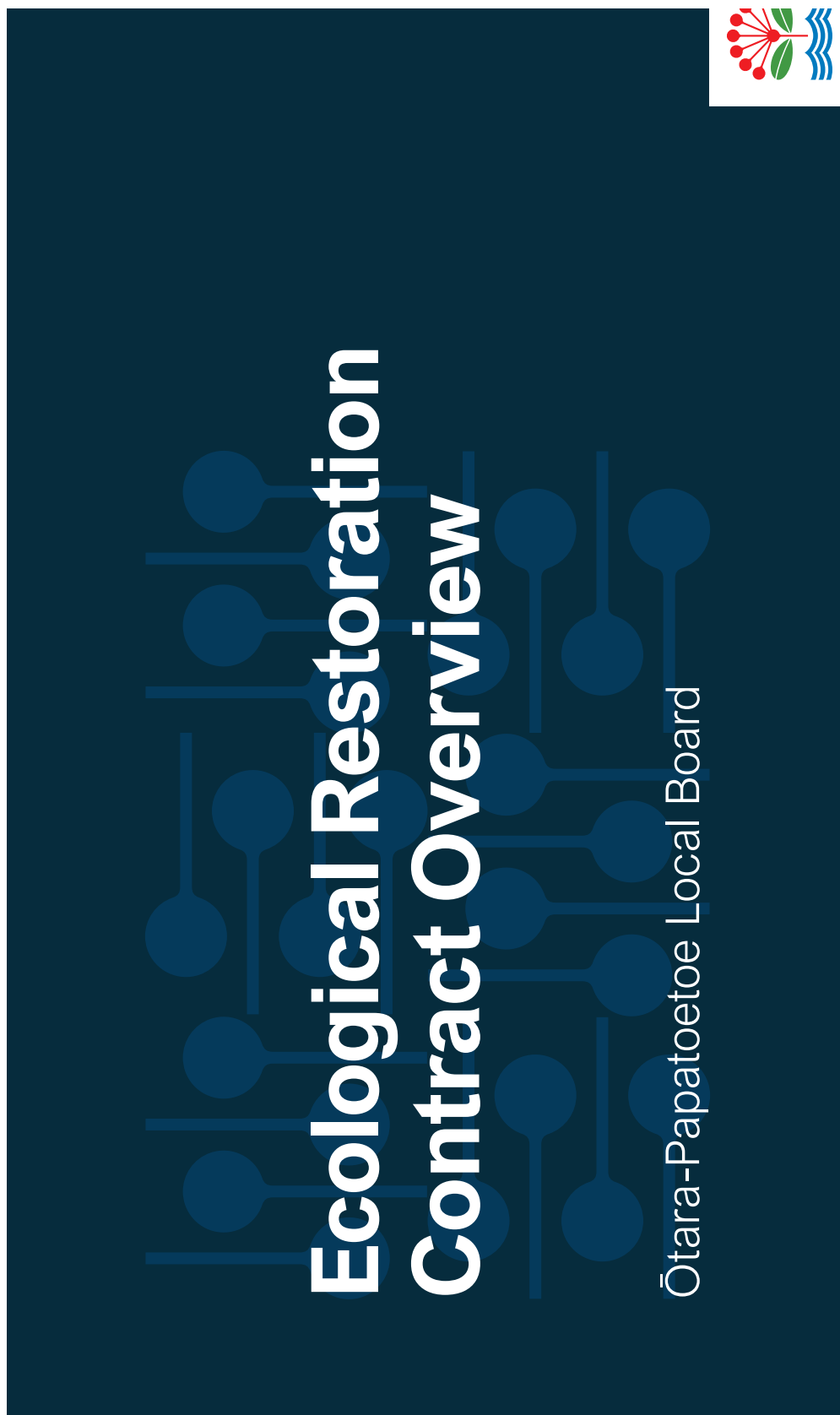
Proposed Outcome/s: To get direction from the Local Board on what they are wanting to see delivered in the new financial year for safety in Ōtara - Papatoetoe. For the Ōtara -Papatoetoe Local Board to discuss and provide feedback or give direction on what they are wanting to be delivered in the new financial year for safety in Ōtara -Papatoetoe.

Attachment/s:

**Ngā tāpirihanga  
Attachments**

No.	Title	Page
<a href="#">A</a>	Ecological Restoration Contract	7
<a href="#">B</a>	Funding Growth Infrastructure - Proposed Government Reforms Contribution Policy 2025	19
<a href="#">C</a>	Sports and Active Recreation Facilities Plan	47
<a href="#">D</a>	Parking Services Update	55





## Ecological Restoration Contract (ERC)

### High Value Sites (HVS) - 4 sites

- Colin Dale Park = 20,193m<sup>2</sup> or 2.02ha
- Kohuora Park = 60,890m<sup>2</sup> or 6.09ha
- Lendenfield Reserve = 5,329m<sup>2</sup>
- Puhinui Reserve = 571,255m<sup>2</sup> or 57ha

### General Sites (Gen) - 7 Sites

- Aerovista Place = 94,939m<sup>2</sup> or 9.5ha
  - Beaufort Reserve = 1,164m<sup>2</sup>
  - Hamill Reserve = 10,283.91m<sup>2</sup> or 1.03ha
  - Ōtara Creek Reserve (North) = 26,165m<sup>2</sup> or 2.6ha
  - Ōtara Creek Reserve = 9,772m<sup>2</sup>
  - Preston Road Reserve/Rongomai Park = 10,116m<sup>2</sup> or 1.01ha
  - Puhinui Stream = 12,337m<sup>2</sup> or 1.2ha
- Total area at start of contract = **822,445m<sup>2</sup>** or approx. 82ha
  - Current contract value (excl. RFS) = \$92,640.00
  - Total area currently on Geomaps = **1,125,658m<sup>2</sup>** or 126ha





## Reserves Prioritised Levels 1-4 Using Current Budget



- Level 1 – HVS weed specification
- Level 2 – General weed specification with potential for greater level of control if budget available
- Level 3 – General weed specification
- Level 4 – No control if budget unavailable

### Level 1

### Level 2

- Kohuora Park
- Lendenfield reserve
- Puhinui Reserve

### Level 3

- Aerovista Place
- Colin Dale Park
- Puhinui Stream

### Level 4

- Beaufort Place
- Hamill Reserve
- Ōtara Creek Reserve (North)
- Ōtara Creek Reserve
- Preston Rd Reserve – Community to pick up





## Ecological Restoration Contract (ERC)

Current contract value (excl. RFS) = \$92,640.00  
New Cost within existing contract specs (incl. upgrades and additions) = \$137,000.00  
RFS work = \$16,500.00  
Optimal Cost (includes additional upgrades, site visits) = \$157,000.00

Total additional funds needed = \$45,000  
Cost/m<sup>2</sup> = \$0.19/m<sup>2</sup>

### Special Projects

Reston Road Reserve Restoration = \$100,000 over 4 years  
Ampapa Road weed removal initial cost = \$100,000







## Ecological Restoration Contract (ERC)

Local Board	% Canopy Cover	Local Board	# of Reserves	Local Board	Total Area in m2
Franklin	Not available	Kaipatiki	55	Kaipatiki	3,569,181.86
Kaipatiki	30%	Upper Harbour	39	Upper Harbour	3,198,262.62
Upper Harbour	28%	Hibiscus-Bays	36	Franklin	2,232,909.62
Hibiscus-Bays	24%	Franklin	34	Hibiscus-Bays	1,364,006.89
Orakei	19%	Howick	29	Howick	1,329,514.99
Waitemata	19%	Orakei	23	Mangere-Otahuhu	1,124,544.22
Devonport-Takapuna	16%	Waitemata	21	Orakei	968,015.48
Howick	16%	Manurewa	20	<b>Otara-Papatoetoe</b>	<b>822,444.82</b>
Papakura	14%	Maungakiekie-Tamaki	13	Manurewa	765,289.65
Manurewa	13%	<b>Otara-Papatoetoe</b>	<b>11</b>	Waitemata	633,533.68
Maungakiekie-Tamaki	12%	Papakura	10	Papakura	396,350.24
<b>Otara-Papatoetoe</b>	<b>10%</b>	Devonport-Takapuna	9	Maungakiekie-Tamaki	225,098.01
Mangere-Otahuhu	8%	Mangere-Otahuhu	4	Devonport-Takapuna	149,758.11
			304	Total	16,778,910.18



Common Names	Latin Names	Ecosystem 1 Terrestrial forest and shrubland	Ecosystem 2 Wetlands	Ecosystem 3 Coast and Dunes	Ecosystem 4 Gumlands (e.g. Waikumete Cemetery)	REPORT ONLY Total Control Pest Plants (report all sites)
African feather grass	<i>Pennisetum macrourum</i>					Yes
African olive	<i>Olea europaea</i> subsp. <i>africana</i>					
African pigs ear	<i>Cotyledon orbiculata</i>			Yes		
Agapanthus	<i>Agapanthus praecox</i>			Yes		
Alligator weed	<i>Alternanthera philoxeroides</i>		Yes			
Apple of Sodom	<i>Solanum linnaeanum</i>					
Aristea	<i>Aristea ecklonii</i>			Yes		
Artillery plant	<i>Galeobdolon luteum</i>					
Arum lily	<i>Zantedeschia aethiopica</i>	Yes	Yes			
Asiatic knotweed	<i>Fallopia japonica</i> & <i>Fallopia sachalinensis</i>					Yes
Asparagus fern	<i>Asparagus setaceus</i>	Yes				
Asparagus spp.	<i>A. drepanophyllus</i> , <i>A. umbellatus</i>					Yes
Australian sedge	<i>Carex longebrachiata</i>	Yes	Yes	Yes	Yes	Yes
Balloon vine	<i>Cardiospermum grandiflorum</i> and <i>C. halicacabum</i>					
Balsam	<i>Impatiens sodenii</i>	Yes				
Banana passionfruit	<i>Passiflora mollissima</i>	Yes				
Bangalow palm	<i>Archontophoenix cunninghamiana</i>	Yes				
Bartlettina	<i>Bartlettina sordida</i>	Yes				
Bear's Breeches	<i>Acanthus mollis</i>	Yes		Yes		
Berry Heath	<i>Erica baccans</i>				Yes	
Bindweed (convolvulus)	<i>Calysetgia sylvatica</i>		Yes	Yes		
Blackberry	<i>Rubus fruticosus</i> agg.	Yes	Yes			
Black-eyed Susan	<i>Thunbergia alata</i>	Yes	Yes			
Blue morning glory	<i>Ipomoea indica</i>	Yes	Yes	Yes		
Blue passion flower	<i>Passiflora caerulea</i>	Yes				



Item 3

Attachment A

Blue spur flower	Plectranthus ecklonii	Yes						
Boilvian fuchsia	Fuchsia boliviana	Yes						
Boneseed	Chrysanthemoides monilifera				Yes			
Boxthorn	Lycium ferocissimum				Yes			
Brazilian pepper tree	Schinus terebinthifolius							Yes
Broomsedge	Andropogon virginicus							
Brush cherry (Lilly Pilly)	Syzygium australe							
Buckthorn (rhamnus)	Rhamnus alaternus	Yes	Yes		Yes	Yes	Yes	
Buffalo grass	Stenotaphrum secundatum							
Bushy asparagus	Asparagus densiflorus	Yes						
Cape honey flower	Melianthus major				Yes			
Cape ivy	Senecio angulatus							
Castor oil plant	Ricinus communis							
Cathedral Bells	Cobaea scandens							Yes
Century plant	Agave americana					Yes		
Cherry, Taiwan	Prunus campanulata	Yes						
Chilean needle grass	Nassella neesiana							Yes
Chilean rhubarb	Gunnera tinctoria			Yes				
Chinese fan palm	Trachycarpus fortunei	Yes						
Climbing asparagus	Asparagus scandens	Yes			Yes			
Climbing dock	Rumex sagittatus	Yes	Yes					
Climbing spindleberry	Celastrus orbiculatus							Yes
Coast banksia	Banksia integrifolia					Yes		
Cotoneaster	Cotoneaster glaucophyllus					Yes		
Devil's fig	Solanum torvum							Yes
Devil's tail	Persicaria perfoliata							Yes
Elaeagnus	Elaeagnus x reflexa	Yes				Yes		
English ivy	Hedera helix spp. Helix	Yes						
Formosa lily	Lilium formosanum							Yes
German ivy	Delairea odorata (Syn. Senecio mikanoides)			Yes		Yes		
Giant reed (arundo grass)	Arundo donax	Yes		Yes				
Ginger, Kahili	Hedychium gardnerianum	Yes		Yes		Yes	Yes	Yes
Ginger, yellow	Hedychium flavescens	Yes		Yes		Yes	Yes	Yes



green cestrum	Cestrum parqui					Yes
lakea, downy	Hakea gibbosa				Yes	
lakea, prickly	Hakea sericea				Yes	
lakea, willow-leaved	Hakea salicifolia			Yes	Yes	
lawthorn	Crataegus monogyna					
leath, Spanish	Erica lusitanica				Yes	
lemlock	Conium maculatum					
loneysuckle, Himalayan	Leycesteria formosa					
loneysuckle, Japanese	Lonicera japonica		Yes	Yes		
loutuynia	Houttuynia cordata					Yes
lydrangea	Hydrangea macrophylla					
lkweed	Phytolacca octandra					
apanese spindle tree	Euonymus japonicus		Yes	Yes	M	
asmine	Jasminum polyanthum			Yes	Yes	
angaroo acacia	Acacia paradoxa			Yes	Yes	
ikuyu grass	Pennisetum clandestinum			Yes	Yes	
iwifruit (wild plants)	Actinidia deliciosa		Yes			
udzu vine	Pueraria montana					Yes
adder fern (tuber sword fern)	Nephrolepis cordifolia		Yes			
antana	Lantana camara		Yes		Yes	
oquat	Eriobotrya japonica		Yes			
fadeira vine (mignonette vine)	Anredera cordifolia		Yes			
fanchurian wild rice	Zizania latifolia					Yes
flarshwort	Nymphoides mexicana					Yes
flexican daisy	Erigeron karvinkianus		Yes		Yes	
flexican devil	Ageratina adenophora			Yes		
flexican feather grass	Nassella tenuissima			Yes		Yes
flexican water lily	Nymphaea mexicana					
file-a-minute	Dipogon lignosus		Yes			
fonkey apple (lilyplily)	Acmena smithii		Yes		Yes	
fontbretia (crocosmia)	Crocosmia x crocosmiiflora					
fontpellier broom	Telina monspessulana				Yes	
foreton Bay fig	Ficus macrophylla				Yes	
foth plant	Araujia sericifera		Yes	Yes	Yes	
lassella tussock	Nassella trichotoma					Yes
leedle grass	Austrostipa rudis					Yes



Item 3

Attachment A

Man's beard	<i>Clematis vitalba</i>					
Oxycodone	<i>Oxylobium lanceolatum</i>	Yes			Yes	Yes
St. John's wort	<i>Hypericum perforatum</i>					
St. Paul's wort	<i>Cortaderia selloana; &amp; C. jubata</i>		Yes		Yes	
Winecreeper	<i>Vinca major</i>	Yes				
Winecreeper	<i>Phoenix canariensis</i>	Yes			Yes	
Winecreeper	<i>Pinus contorta</i>	Yes			Yes	
Winecreeper	<i>Pinus pinaster</i>				Yes	
Winecreeper	<i>Pinus radiata</i>				Yes	
Winecreeper	<i>Crassula multicava</i>				Yes	
Winecreeper	<i>Plectranthus ciliatus</i>	Yes				
Winecreeper	<i>Plectranthus grandis</i>	Yes				
Winecreeper	<i>Plectranthus ecklonii</i>	Yes				
Winecreeper	<i>Homalanthus populifolius</i>					
Winecreeper	<i>Populus alba</i>		Yes			
Winecreeper	<i>Acacia verticillata</i>				Yes	
Winecreeper	<i>Ludwigia pepioides</i>		Yes			
Winecreeper	<i>Ligustrum sinense</i>	Yes				
Winecreeper	<i>Ligustrum lucidum</i>	Yes				
Winecreeper	<i>Lythrum salicaria</i>					Yes
Winecreeper	<i>Prunus campanulata</i>	Yes				
Winecreeper	<i>Cestrum nocturnum</i>	Yes				
Winecreeper	<i>Rhamnus alaternus</i>	Yes	Yes		Yes	
Winecreeper	<i>Toxicodendron succedaneum</i>	Yes	Yes		Yes	
Winecreeper	<i>Osmunda regalis</i>		Yes			Yes
Winecreeper	<i>Juncus effusus</i>		Yes			
Winecreeper	<i>Sagittaria spp.</i>					Yes
Winecreeper	<i>Paspalum vaginatum</i>		Yes		Yes	
Winecreeper	<i>Geitonoplesium cymosum</i>					Yes
Winecreeper	<i>Gymnocoronis spilanthoides</i>					Yes
Winecreeper	<i>Rhaphiolepis umbellata</i>				Yes	
Winecreeper	<i>Juncus acutus</i>		Yes		Yes	
Winecreeper	<i>Asparagus asparagoides</i>		Yes		Yes	
Winecreeper	<i>Iris foetidissima</i>		Yes		Yes	
Winecreeper	<i>Rosa rubiginosa</i>					
Winecreeper	<i>Polygala myrtifolia</i>				Yes	
Winecreeper	<i>Acacia melanoxylon</i>				Yes	





Tecoma	Tecomaria capense								
Tree lupin	Lupinus arboreus					Yes			
Tuber sword fern (ladder fern)	Nephrolepis cordifolia		Yes			Yes			
Tutsan	Hypericum androsaemum								
Velvet groundsel	syn. Senecio petasitis		Yes						
Wandering willy	Tradescantia fluminensis		Yes						Yes
Water poppy	Hydrocleys nymphoides								
Watsonia	Watsonia bulbilifera								
Wattle, black	Acacia mearmsii					Yes			
Wattle, brush	Paraserianthes lophantha			Yes		Yes			
Wattle, cedar	Acacia elata			Yes		Yes			
Wattle, kangaroo acacia	Acacia paradoxa					Yes			
Wattle, silver	Acacia dealbata					Yes			
Wattle, Sydney golden	Acacia longifolia					Yes			
White-edged nightshade	Solanum marginatum								Yes
Wild gladiolus	Gladiolus undulatus					Yes			
Willow, crack	Salix fragilis				Yes				
Willow, grey	Salix cinerea				Yes				
Wisteria	Wisteria sinensis		Yes						
Woolly nightshade (tobacco tree)	Solanum mauritianum		Yes			Yes		Yes	
Yellow flag Iris	Iris pseudacorus				Yes				
Yellow water lily	Nuphar lutea		Yes		Yes				
			54	40	59	20			27





**Funding growth infrastructure**  
Proposed Government reforms  
Contributions Policy 2025  
Governing Body Workshop

5 March 2025

Item 3

Attachment B



## Going for Housing Growth

- **Objectives:**
  - Increase affordable housing
  - Improve living conditions for renters and homeowners
  - Support productivity, economic growth and job creation

- **Three pillars**

Freeing up  
land for  
development  
and removing  
unnecessary  
planning  
barriers

Improving  
infrastructure  
funding and  
financing

Providing  
incentives for  
communities  
and councils  
to support  
growth





## Pillar 2

### Government announcements on 28 February:

- Development levies
- Updates to IFF and targeted rates























































































