

Date: Wednesday, 12 March 2025
Time: 11.45am
Meeting Room: Room 1, Level 26
Venue: Te Wharau o Tāmaki - Auckland House
135 Albert Street
Auckland

**Te Komiti mō te Kaupapa Here me te
Whakamahere Policy and Planning Committee
Workshop - Auckland Council's approach to
community planning for climate disruption**

OPEN AGENDA

MEMBERSHIP

Chairperson	Cr Richard Hills	
Deputy Chairperson	Cr Angela Dalton	
Members	Houkura Member Edward Ashby	Cr Mike Lee
	Cr Andrew Baker	Cr Kerrin Leoni
	Cr Josephine Bartley	Cr Daniel Newman, JP
	Mayor Wayne Brown	Cr Greg Sayers
	Cr Chris Darby	Deputy Mayor Desley Simpson, JP
	Cr Julie Fairey	Cr Sharon Stewart, QSM
	Cr Alf Filipaina, MNZM	Cr Ken Turner
	Cr Christine Fletcher, QSO	Cr Wayne Walker
	Cr Lotu Fuli	Cr John Watson
	Houkura Member Hon Tau Henare	Cr Maurice Williamson
	Cr Shane Henderson	

Sandra Gordon
Kaitohutohu Mana Whakahaere Matua / Senior
Governance Advisor

5 March 2025

Contact Telephone: +64 9 890 8150
Email: Sandra.Gordon@aucklandcouncil.govt.nz
Website: www.aucklandcouncil.govt.nz

Workshops enable staff to explore options with elected members before ideas are fully developed, and to receive feedback and guidance on policy development or project design. No resolutions or decisions are made by elected members at workshops and so the requirements of the Local Government Official Information and Meetings Act 1987 relating to local authority meetings do not apply.

Note: The reports contained within this agenda are for consideration and should not be construed as Council policy unless and until adopted. Should Members require further information relating to any reports, please contact the relevant manager, Chairperson or Deputy Chairperson.

ITEM	TABLE OF CONTENTS	PAGE
1	Ngā Tamōtanga Apologies	2
2	Te Whakapuaki i te Whai Pānga Declaration of Interest	2
3	OPEN Workshop: Auckland Council’s approach to community planning for climate disruption	3

Agenda Items

1 Ngā Tamōtanga | Apologies

2 Te Whakapuaki i te Whai Pānga | Declaration of Interest

Members are reminded of the need to be vigilant to stand aside from decision making when a conflict arises between their role as a member and any private or other external interest they might have.

OPEN Workshop: Auckland Council's approach to community planning for climate disruption

File No.: CP2025/03373

- Note 1: This workshop has been called by the chairperson in consultation with the staff.
- Note 2: No working party/workshop may reach any decision or adopt any resolution unless specifically directed to do so.

Te take mō te pūrongo Purpose of the report

1. The purpose of the workshop is to provide a detailed briefing on Auckland Council's approach to community planning for climate disruption prior to the item being considered in April 2025.

Whakarāpopototanga matua Executive summary

2. The following will be covered in the workshop:

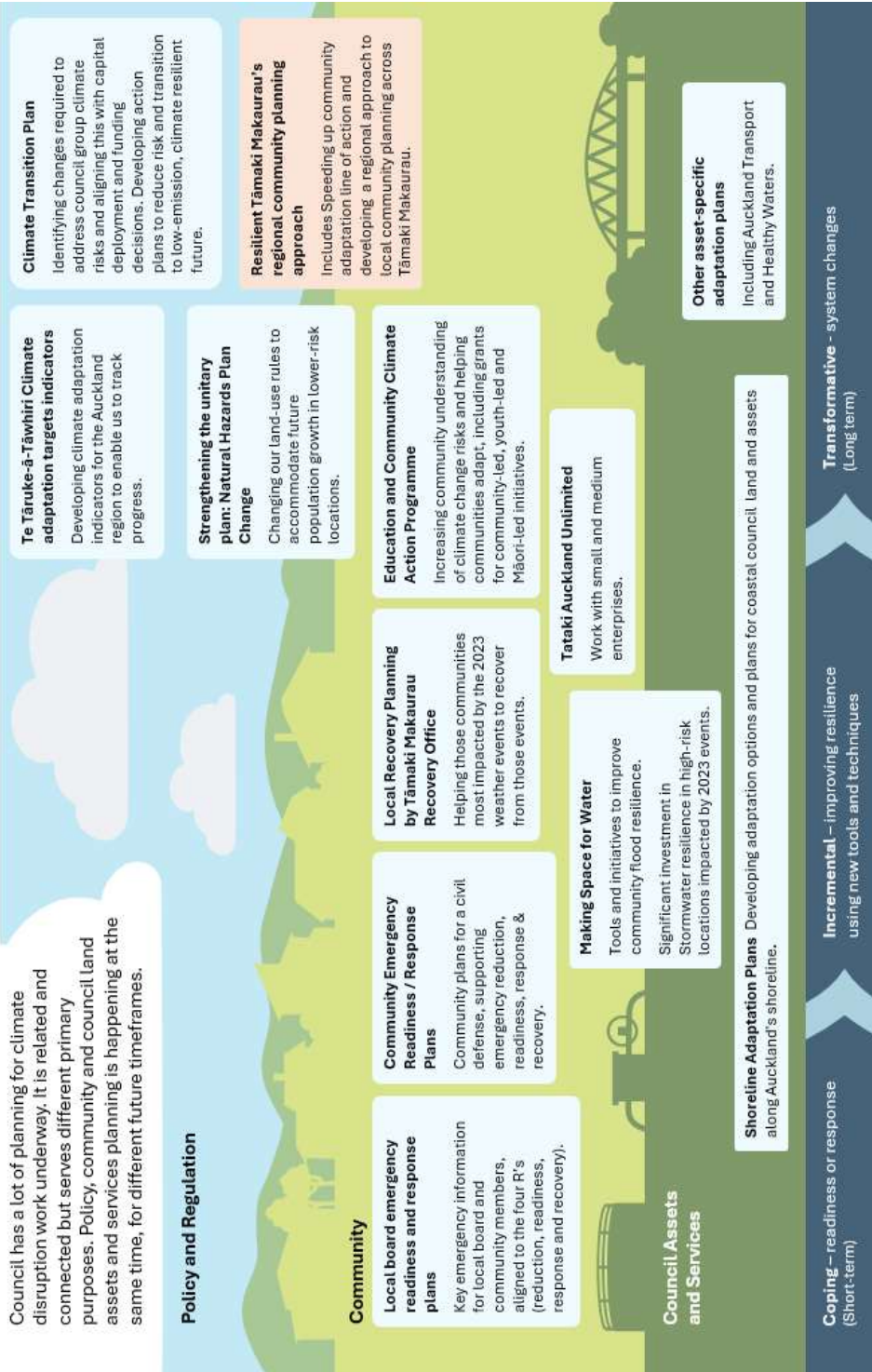
Item
<p>Update on how Auckland Council is supporting communities to adapt to Climate Disruption</p> <p>Ben Brooks</p> <p>Figure 1 (Attachment A) provides an overview of council activities to support communities in Tāmaki Makaurau to adapt to climate disruption. This workshop will focus on the Resilient Tāmaki Makaurau programme which is highlighted on the right of the diagram.</p> <p>Members and local board members received an update memorandum on the programme and a pilot being undertaken in Papakura in November 2024 which is attached as background (Attachment B).</p>
<p>What Auckland needs from the government's adaptation legislation</p> <p>Ben Brooks</p> <p>The government has announced it will introduce climate adaptation legislation this year. It is critical for Auckland that this legislation delivers what our communities need to enable them to take action.</p>

Ngā tāpirihanga Attachments

No.	Title	Page
A	Planning for climate disruption in Auckland communities	5
B	Resilient Tāmaki Makaurau – Community Planning for Climate Disruption: Papakura Pilot	7

Planning for climate disruption in Auckland communities

Council has a lot of planning for climate disruption work underway. It is related and connected but serves different primary purposes. Policy, community and council land assets and services planning is happening at the same time, for different future timeframes.



Coping – readiness or response (Short-term)

Incremental – improving resilience using new tools and techniques

Transformative - system changes (Long term)



Memorandum

12 November 2024

To: Policy and Planning Committee and all Local Board members

Subject: Resilient Tāmaki Makaurau – Community Planning for Climate Disruption: Papakura Pilot

From: Ben Brooks, Senior Policy Manager

Contact information: ben.brooks@aucklandcouncil.govt.nz

Purpose

1. To inform elected members about Resilient Tāmaki Makaurau – community planning for climate disruption and pilots beginning in local communities.

Summary

2. The Resilient Tāmaki Makaurau work programme was developed following the flooding and cyclone of January and February 2023.
3. Developing the most effective approaches to supporting Auckland's communities to plan for climate disruption will reduce the impacts of future events to council and our communities, including costs of remediation, clean-up and property buy-outs.
4. This memorandum focuses on one element of the programme - community planning which is fully funded through department budgets and the Storm Response Fund.
5. As part of the programme staff are beginning to pilot methods and ways of working in local communities. The first pilot is in the Papakura Local Board area, but other areas will be in future pilots.
6. The key challenge for the programme is the lack of a government framework, particularly the lack of detail around what role central government will take, what funding will be provided, how and what for. Staff expect the government to announce legislation on this in early 2025 but it is not yet clear to what extent the legislation will resolve these issues.

Context

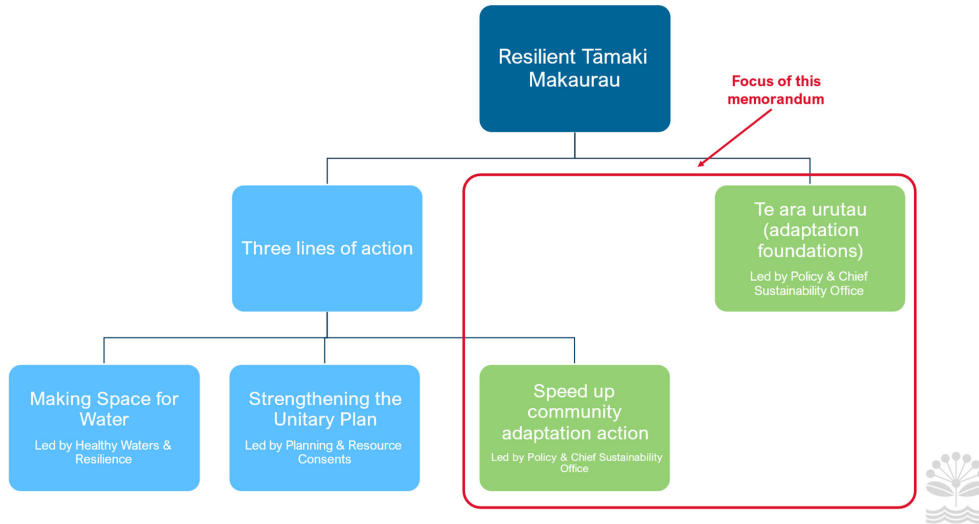
The Resilient Tāmaki Makaurau work programme was endorsed following severe weather in 2023

7. A scope of works to investigate the impacts and implications of the extreme weather events and the required improvements for policy and infrastructure settings was approved by a delegated committee and noted at the Planning, Environment and Parks committee in March 2023 ([PEPCC/2023/25](#)).
8. On 29 June 2023, the Planning, Environment and Parks committee (PEPCC/2023/81):
 - endorsed the Accelerating a Resilient Tāmaki Makaurau insight report
 - noted that for the three lines of action within 'Accelerating a Resilient Tāmaki Makaurau Auckland':
 - i. Strengthening the Unitary Plan is reported separately
 - ii. Speeding up community adaptation is funded

- iii. Making Space for Water was going for public consultation and would be reported separately.

2. The Resilient Tāmaki Makaurau work programme structure is in Figure 1 below.

Figure 1. Resilient Tāmaki Makaurau Programme Structure



- 9. As in Figure 1, this memorandum relates to the council's levers in **community planning for climate disruption** (Speed up community adaptation line of action and Te ara Urutau / the longer-term journey). Staff are ensuring a coordinated approach with the other lines of action, but they are reported separately.
- 10. The programme is fully funded through department budgets and the Storm Response Fund.
- 11. There are other work programmes across council that align with this work. Staff are working collaboratively to ensure a coordinated approach (for instance, see CP2024/13162 for a recent update on the Recovery Office's work, which also includes an update on the Making Space for Water programme).

Planning for climate disruption requires working together and long-term thinking

- 12. Climate disruption will require communities and council to work together to identify solutions, fund and implement interventions across Auckland.
- 13. When the council, mana whenua, mataawaka and communities prepare earlier, we are likely to have more options, more time to implement them, with a smoother transition and lower costs. By working together, communities will be better placed to create lasting solutions.
- 14. Investing in community-led planning will help to identify impactful solutions that meet all community's needs. This will inform wise prioritisation of future council investment.

Central government is developing a national framework

- 15. Central government is currently developing a National Adaptation Framework. This framework will set out the government's approach to sharing the costs of adapting to climate change. Legislation to support this framework is expected to be introduced in 2025.
- 16. The National Adaptation Framework is a critical input, as it is expected to clarify the roles of local government, insurers, and other groups in supporting and funding adaptation activity.

Work is underway or complete for all speeding up community adaptation actions

17. We are delivering a range of mahi that will help us and the community be climate ready. These are summarised in Figure 2.

Figure 2. Community planning for climate disruption





Discussion

Pilot programme beginning in Papakura with other local board areas in future

18. From our work to date we know communities want to know more about climate disruption and how plan. They have also told us that they want to know council is being responsible in the ways we can help communities be climate ready.
19. Under Speed up community line of action staff are initiating a pilot planning project in the Papakura Local Board area. Over time staff will be working in other local board areas as well as testing region-wide approaches.
20. The Papakura community pilot will test the most effective methods of empowering local communities to engage in grass roots climate adaptation by:
 - directly investing in community-led adaptation planning, action & participation
 - testing participatory ways of working and investing in community-led activities
 - simplifying community access to council knowledge and resources
 - funding grants through the Recovery Office for communities most impacted by the 2023 weather events to support development and implementation of local recovery plans.

The council's future approach will also be informed by central government legislation

21. The key challenge for the programme is the lack of a government framework, particularly the lack of detail around what role central government will take and what funding will be provided, how and what for. We expect the government to announce legislation on this in early 2025 but it is not yet clear to what extent the legislation will resolve these issues.

Next steps

22. Staff will engage directly with the Papakura Local Board on the pilot in their area. This will be used to inform work in other areas with local boards engaged on work in their areas.
23. Councillors will continue to be briefed on this work at key milestones and where decisions are required.