

Date: Wednesday 12 March 2025
Time: 11.46am
Meeting Room: Room 1, Level 26
Venue: Te Wharau o Tāmaki - Auckland House
135 Albert Street
Auckland

**Te Komiti mō te Kaupapa Here me te
Whakamahere / Policy and Planning Committee
Workshop – Auckland Council’s approach to
community disruption**

OPEN MINUTE ITEM ATTACHMENTS

ITEM	TABLE OF CONTENTS	PAGE
3	OPEN Workshop: Auckland Council’s approach to community planning for climate disruption	
A.	12 March 2025, Policy and Planning Committee Workshop - Auckland Council’s approach to community planning for climate disruption - presentation	3


11/03/2025

Item 3

Resilient Tāmaki Makaurau

Supporting Community Planning for Climate Disruption

Ben Brooks, Senior Policy Manager
Bonnie Apps, Principal Policy Advisor



1

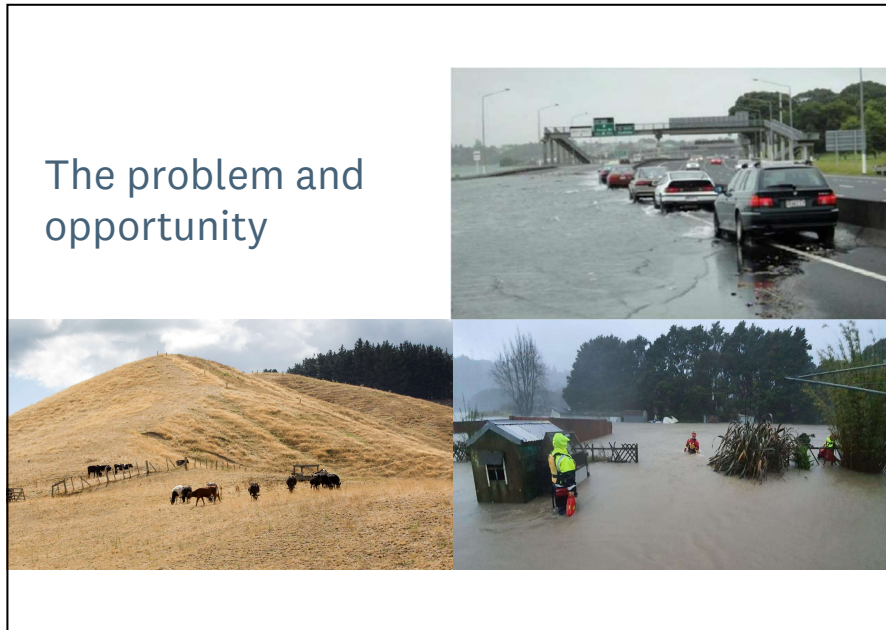
Agenda

- Problem and opportunity
- What long-term climate planning looks like
- What central government is doing
- Shaping the national system
- Questions

2

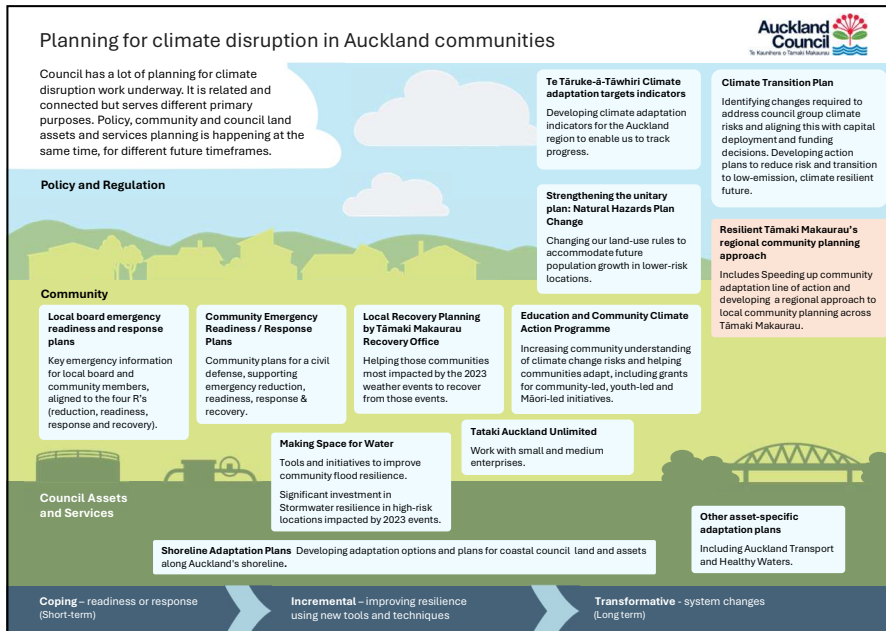
Attachment A

1



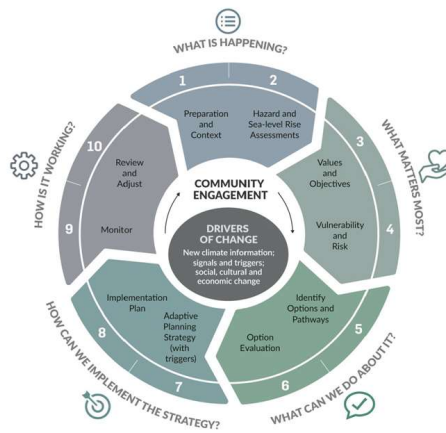
The problem and opportunity

3



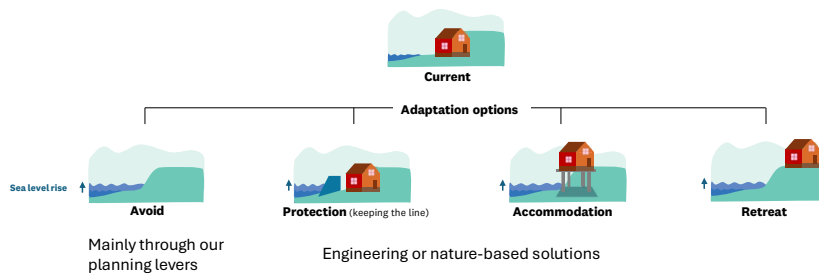
4

What does long-term climate planning look like?



5

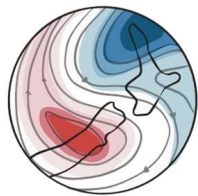
PARA Framework



6

What is central government doing?

- Cross-party inquiry into climate adaptation 2024
- Select committee recommendations
- National Adaptation Plan
- National Adaptation Framework
- Legislation to be introduced in 2025
 - Cost-sharing and local government role



7

What is Auckland Council's approach?

- Statement of current role and direction in 2022.
- Resilient Tāmaki Makaurau work programme after extreme weather in 2023.
- Included short, medium and long-term steps to build a resilient Tāmaki Makaurau. We are now in year two.
- Developing regional approach to local planning including:
 - principles and prioritisation criteria
 - how to integrate plans
 - pilot planning projects

Resilient Tāmaki Makaurau
Community planning for climate disruption

Auckland Council
Te Kaitiaki o Tāmaki Makaurau

What we are working on now

<p>Behaviour change How to motivate and enable people to plan for climate disruption.</p> <p>Strategies to build better Ensuring infrastructure renewal and community adaptation strategies are aligned and mutually supportive.</p>	<p>Knowledge Developing the knowledge system, assessing climate impacts and community vulnerability understanding the cost of adaptation versus inaction.</p> <p>Grants Funding recovery and building resilience.</p>	<p>Pilots Testing methods for growing community climate planning.</p> <p>Platform Providing and platform to enable adaptation work across Auckland Council.</p>
--	---	---

For a regional approach to local climate planning

Developing an equitable approach to community planning for climate disruption, across Tāmaki Makaurau.

Towards community outcomes

Resilient Tāmaki Makaurau communities, working together to thrive in a disrupted climate.

- ▶ Communities have planned and act ahead of time to keep us and those who come after us safe from climate disruption in Tāmaki Makaurau.
- ▶ Community planning is equitable and integrated with other plans for Auckland – enabling progress.

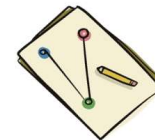
8

Prioritisation criteria

- Communities across Auckland facing range of challenges we will be supporting all communities but also recognising some will need more support than others
- Future Development Strategy criteria
 - Hazards, vulnerability and population density
- Testing and refining this for regional adaptation

9

What have we learnt so far?



- Many **communities are ready** to start planning but **lack resources and capacity. Or power** to influence or coordinate plans that involve public assets.
- Regional planning requires close **community involvement** and sustained coordinated **council commitment**.
- **Mana whenua will be key local adaptation partners**. Maturing relationships, trust building, investment in capacity and sustained council commitment are essential.
- Proactive community planning currently takes **significant effort** (and it is still difficult to reach everyone). Successful approaches so far require intensive engagement, localised approaches, resource on both sides of the conversation.

10

5

What do we want our national system to be?



Position statements

The national adaptation framework is urgent, central government should prioritise it.

It must give clear mandate and roles, including how to coordinate planning among groups with different responsibilities.

It must have new funding or funding tools for local government to effectively engage and support community planning.

It should recognise the unique structure of Auckland Council and that it may be appropriate to provide additional or greater powers.

Auckland Council broadly supports select committee recommendations on principles including subsidiarity, local flexibility, incorporating specific interests and rights of Māori, fairness and equity.

11

Next steps

- Local board member workshop.
- Report to committee requesting delegation for a future submission, consistent with our 2023 submission.
- Use opportunities to advocate to central government.
- Continue to progress Resilient Tāmaki Makaurau work programme that develops Auckland Council's regional approach to local climate adaptation planning.
- Seek approval of a regional approach in 2026.

12

11/03/2025

Questions?

13

Item 3

Attachment A

7