

**Date:** Wednesday 12 March 2025  
**Time:** 10.30am  
**Meeting Room:** Whau Local Board Office  
**Venue:** 31 Totara Avenue  
New Lynn

---

## Whau Local Board Workshop

### NOTES ATTACHMENTS

---

ITEM	TABLE OF CONTENTS	PAGE
	<b>Local Board Workshop</b>	
A.	Presentation - Parks and Community Facilities Monthly Report Dec-Jan	3
B.	Presentation - Olympic Park - Sandpit Renewal March 2025	31
C.	Presentation - Shoreline Adaptation Plans	39
D.	Shoreline Adaptation Plans - Community Engagement Updates	69
E.	Presentation - Whau Wildlink	81
F.	Presentation - Funding growth infrastructure	93



GREAT PLACE  
AUCKLANDERS LOVE  
PARKS & COMMUNITY FACILITIES

WHAU - Local Board Report – December 2024 – January 2025



Whau  
Local Board

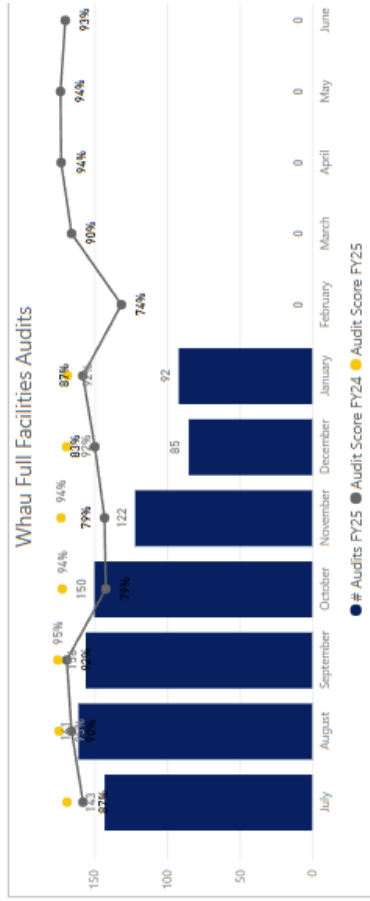
PREPARED BY SHANE HOGG – AREA OPERATIONS MANAGER

Attachment A

**GREAT PLACE  
AUCKLANDERS LOVE**  
PARKS & COMMUNITY FACILITIES

**PERFORMANCE REPORTING**

**Audit Results**



The highlights and lowlights of audits undertaken FY24/25 YTD are:

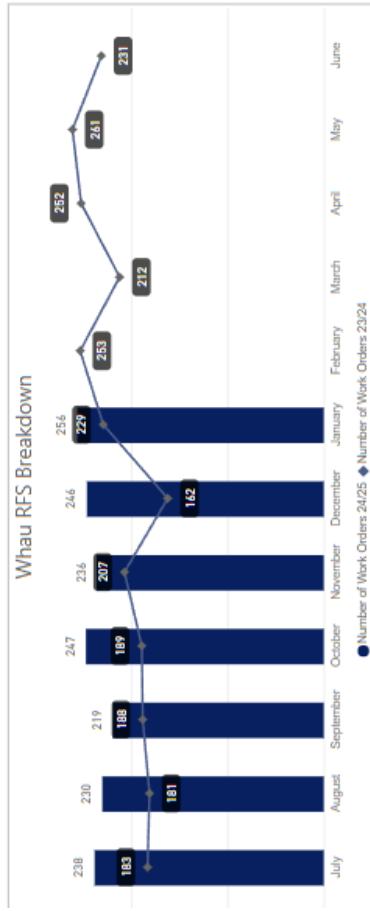
Highlights YTD	Lowlights YTD
Building Cleaning	Response WO
Sportsfields	Streetscapes Clean
Street Garden	Streetscapes Green
Turf	Toilet
Water Feature	Tracks (incl. Structures)

**COMMENTARY**

Audit of track maintenance is continuing for review at a contract level. There are investigations currently ongoing into the response work order and streetscapes with Programmed.

**Request for Service Received**

I raised for FY24/25 YTD **1672**



includes RFS that have resulted in a Work Order for action.

Breakdown of Top 5 Request for Service for January

Service Name	Number of Work Orders 24/25
Maintenance - General	73
Litter Collection	41
entry Maintenance Service	15
ature Maintenance and Repairs	12
Pest Removal	10

Breakdown of Top 5 Request for Service FY24/25 YTD

Service Name	Number of Work Orders 24/25
Tree Maintenance - General	366
Loose Litter Collection	270
Cleaning Services	118
Carpentry Maintenance Service	103
Plumbing Maintenance Service	101

**COMMENTARY**

he team raised several RFS this past month for repairs and maintenance that as identified and required, this was more than the previous years numbers.

**GREAT PLACE  
AUCKLANDERS LOVE  
PARKS & COMMUNITY FACILITIES**

**MAINTENANCE DELIVERY UPDATE**

**verside Reserve - Avondale**

We have trimmed the hedges at Riverside Reserve, keeping the area neat and well-maintained.



**Attachment A**

Attachment A

**GREAT PLACE  
AUCKLANDERS LOVE  
PARKS & COMMUNITY FACILITIES**

**MAINTENANCE DELIVERY UPDATE**

**2 Rosebank Road - Avondale**

We have addressed a streetscape tree trimming enquiry at 262 Rosebank Road. Before-and-after images show the branches have been trimmed to improve clearance and safety.

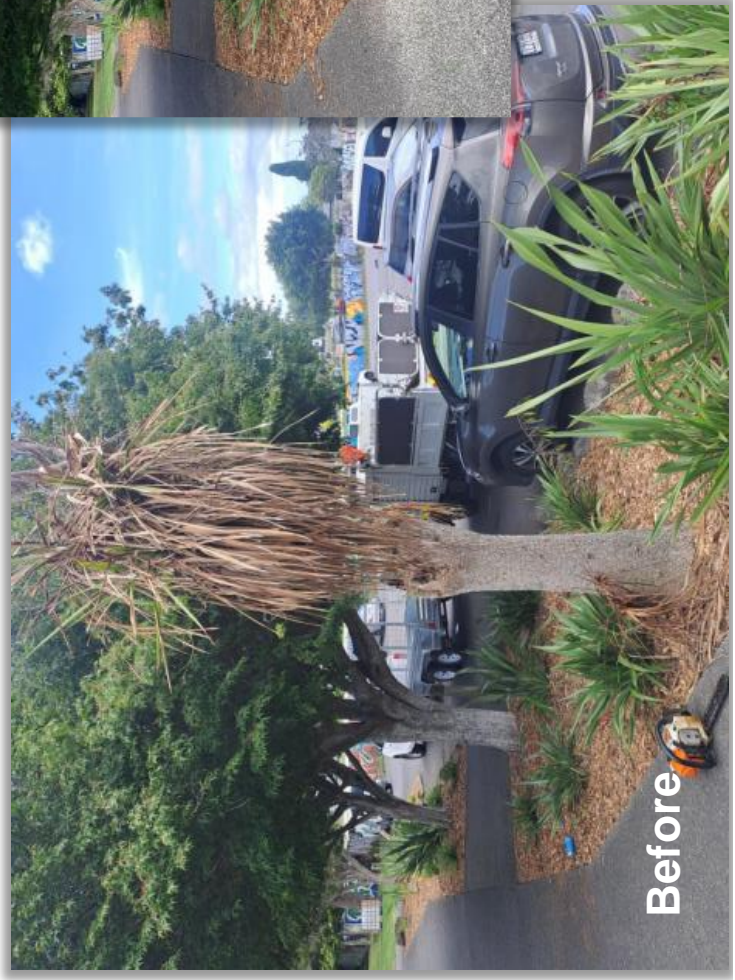


**GREAT PLACE  
AUCKLANDERS LOVE  
PARKS & COMMUNITY FACILITIES**

**MAINTENANCE DELIVERY UPDATE**

**Avondale Central**

We have removed the dead Cordyline at Avondale Central to improve the appearance and safety of the area.



Attachment A

**GREAT PLACE  
AUCKLANDERS LOVE**  
PARKS & COMMUNITY FACILITIES

**MAINTENANCE DELIVERY UPDATE**

**Blockhouse Bay Beach Reserve - Blockhouse Bay**



We have fixed the leaking drinking fountain at Blockhouse Bay Beach Reserve, with before-and-after results showing it is now fully operational and leak-free.



**GREAT PLACE  
AUCKLANDERS LOVE  
PARKS & COMMUNITY FACILITIES**

**MAINTENANCE DELIVERY UPDATE**

**Olympic Park - New Lynn**

We have fixed the swings at Olympic Park, ensuring they are safe and ready for use.



Attachment A



GREAT PLACE  
AUCKLANDERS LOVE  
PARKS & COMMUNITY FACILITIES

MAINTENANCE DELIVERY UPDATE

Olympic Park - New Lynn



We have fixed the platform timber at Olympic Park, ensuring a safer and more durable structure.

**GREAT PLACE  
AUCKLANDERS LOVE**  
PARKS & COMMUNITY FACILITIES

**MAINTENANCE DELIVERY UPDATE**

Olympic Park - New Lynn

We have fixed the seat timber at Olympic Park to improve its durability and ensure a more comfortable experience for visitors.



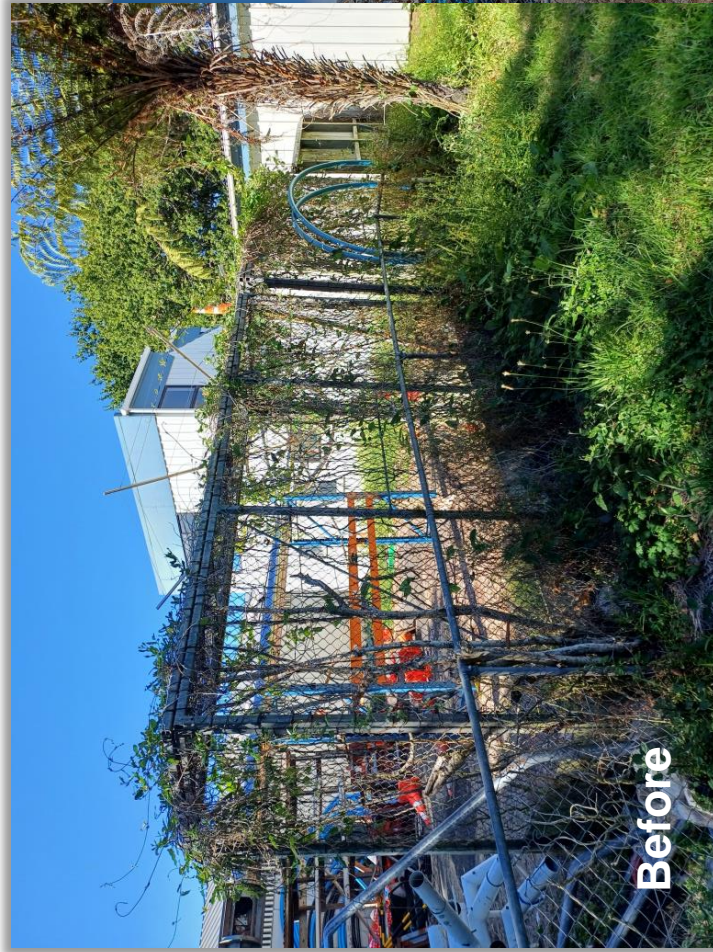
Attachment A

**GREAT PLACE  
AUCKLANDERS LOVE  
PARKS & COMMUNITY FACILITIES**

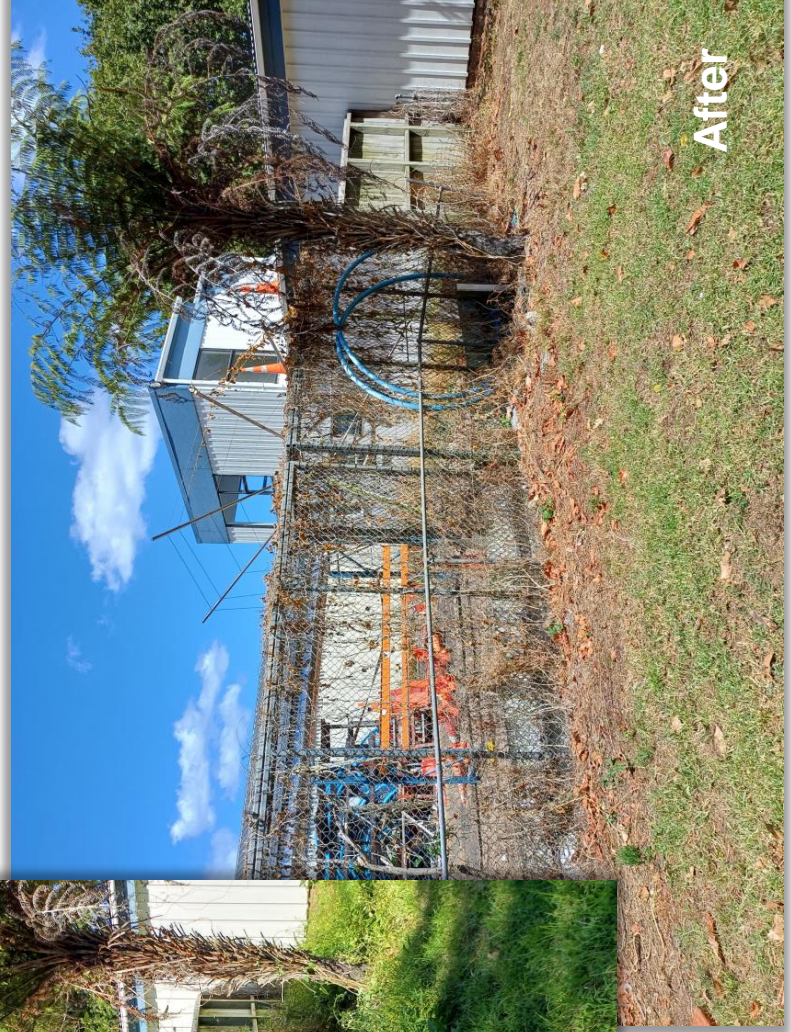
**MAINTENANCE DELIVERY UPDATE**

**Eastdale Reserve - Avondale**

We have carried out pest plant control at Eastdale Reserve, targeting moth plants.  
Before-and-after results show a significant improvement.



Before



After

**GREAT PLACE  
AUCKLANDERS LOVE  
PARKS & COMMUNITY FACILITIES**

**MAINTENANCE DELIVERY UPDATE**

**Shipton Reserve - Blockhouse Bay**

We have trimmed the hedges at Shipton Reserve, with before-and-after results showing a tidy and well-maintained space.















































































































































































































































