

Date: Thursday 13 March 2025
Time: 10.00am
Meeting Room: Reception Lounge
Venue: Auckland Town Hall
 301-305 Queen Street
 Auckland

Te Komiti mō te Kaupapa Here me te Whakamahere / Policy and Planning Committee

OPEN MINUTE ITEM ATTACHMENTS

ITEM	TABLE OF CONTENTS	PAGE
5.1	Public Input: Extinction Rebellion Auckland - Climate-safe cities in 2025 and beyond	
	A. 13 March 2025, Policy and Planning Committee, Item 5.1 - Public Input: Extinction Rebellion Auckland - Climate-safe cities in 2025 and beyond - presentation	3
8	Proposed revocation of the reserve status of 2R Ti Rakau Drive, Pakuranga	
	A. 13 March 2025, Policy and Planning Committee, Item 8 - Proposed revocation of the reserve status of 2R Ti Rakau Drive, Pakuranga - presentation	7
10	Auckland Council Group project list to be submitted to the Infrastructure Priorities Programme (Part of the National Infrastructure Plan)	
	A. 13 March 2025, Policy and Planning Committee, Item 10 - Auckland Council Group project list to be submitted to the Infrastructure Priorities Programme (Part of the National Infrastructure Plan) - presentation	9
12	Auckland Unitary Plan - Private Plan Change Request to Rezone Land at 70, 70A and 70B Lisle Farm Drive, Pukekohe	
	A. 13 March 2025, Policy and Planning Committee, Item 12 - Auckland Unitary Plan - Private Plan Change Request to Rezone Land at 70, 70A and 70B Lisle Farm Drive, Pukekohe - presentation	15
13	Auckland Unitary Plan – Making Plan Change 92 (Private) Wellsford North operative	
	A. 13 March 2025, Policy and Planning Committee, Item 13 - Auckland Unitary Plan – Making Plan Change 92 (Private) Wellsford North operative - presentation	17

Note: The attachments contained within this document are for consideration and should not be construed as Council policy unless and until adopted. Should Councillors require further information relating to any reports, please contact the relevant manager, Chairperson or Deputy Chairperson.

11/03/2025

Item 5.1

Attachment A



1

Declaration Climate Emergency 2019

- 1. Te Tārurke-a-Tāwhiri 2020**
 - Reduce emissions by 50% by 2030
 - Net zero by 2050
- 2. Community engagement and empowerment**
 - Thousands on Aucklanders participated in climate initiatives
 - 60+ community groups have grants, education and advocacy programmes
 - Reduction of 6,600 tonnes of carbon pollution
- 3. Infrastructure and investment**
 - Food Scraps collection
 - Public transport
 - Green bonds
 - Tree planting
 - Transitioning Council buildings to regenerative energy
- 4. Response to extreme weather events**
 - Partnered with Government for flood recovery

2

1



3



4

11/03/2025

Extinction Rebellion Recommends:

A target for the city emissions

An overt citywide campaign

Fortnightly press conferences
On how emissions target

5

Item 5.1

Attachment A


3

11/03/2025

Item 8

Attachment A

2R TI Rakau Drive, Pakuranga – Aerials image and reserve parcel details




No	Legal Description	Current reserve classification	Land Area (Ha)	Record of Title
1	Lot 4 DP 55286	Local purpose (utility) reserve	0.2003	NA50B/76
2	Lot 6 DP 55286	Local purpose (utility) reserve	0.0003	NA1814/78 (part-cancelled)
3	Lot 9 DP 55286	Local purpose (utility) reserve	0.0344	NA49C/1325
4	Lot 12 DP 55286	Local purpose (utility) reserve	0.6318	NA49C/1326
5	Lot 2 DP 53672	Local purpose (utility) reserve	0.7841	NA50B/73
6	Lot 3 DP 53433	Local purpose (utility) reserve	0.7783	NA97B/90
7	Lot 11 DP 47737	Recreation reserve	0.0200	NA5C/242
8	Lot 1 DP 55585	Local purpose (utility) reserve	0.0002	NA1814/80 (cancelled)
			2.4494	

*Picture 1. Subject areas are outlined in red

1

2R TI Rakau Drive, Pakuranga – Aerials image

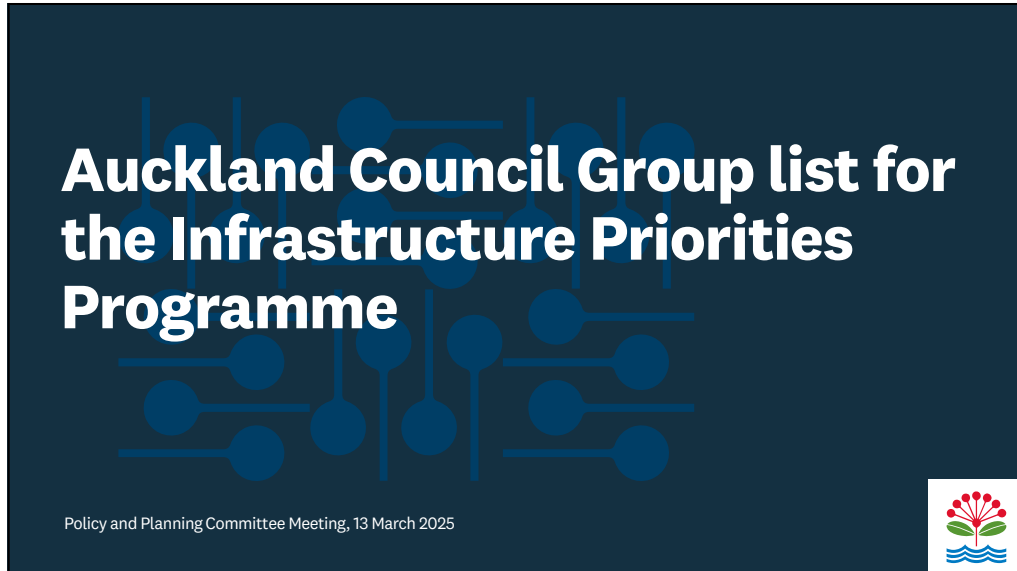


2

1

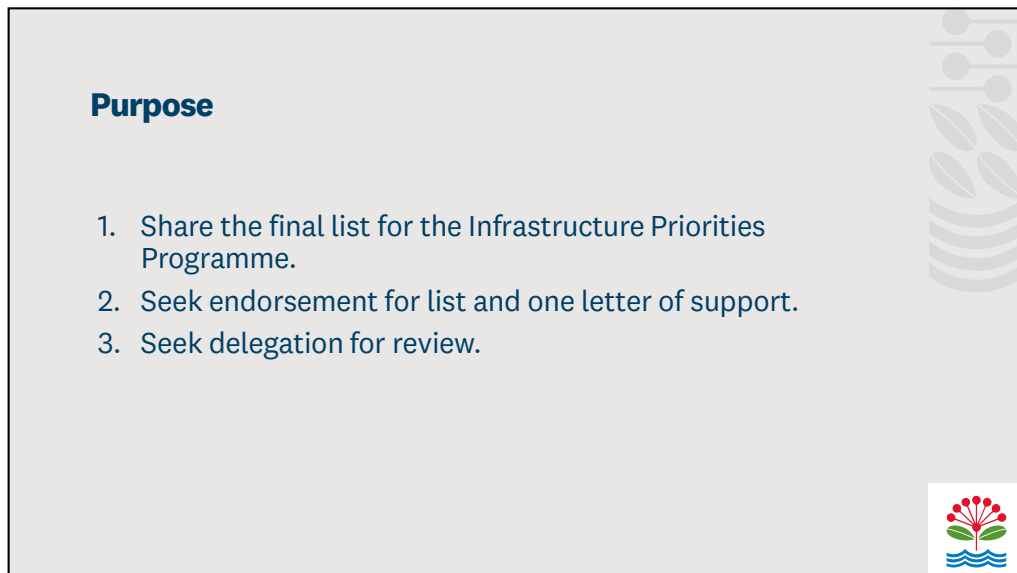
12/03/2025

Item 10



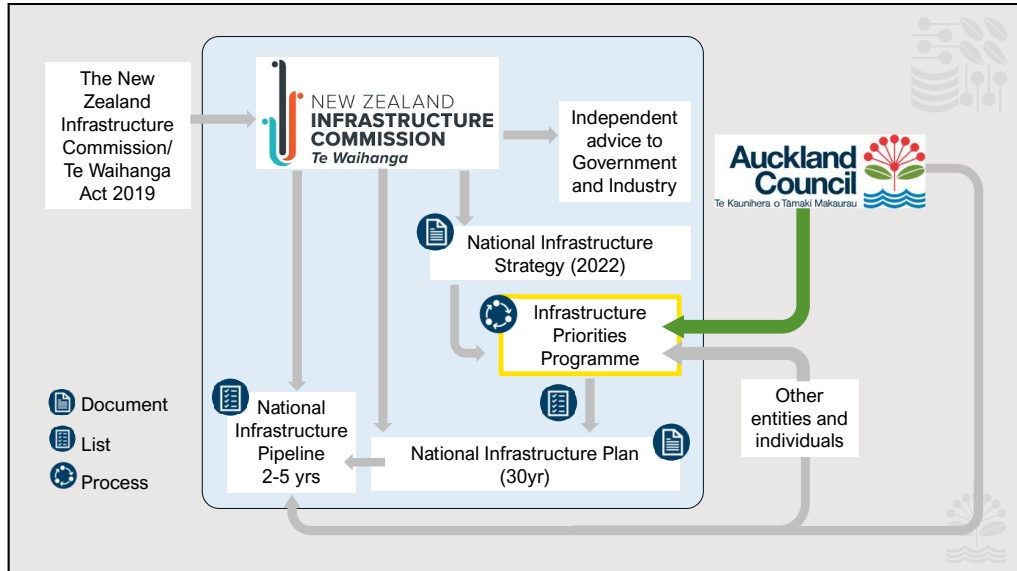
1

Attachment A



2

1



3

How projects qualify for the Infrastructure Priorities Programme

Projects need to:


- ✓ **Be nationally significant**
- ✓ **Be aligned with national strategic objectives or sector-based strategy**
- ✓ **Demonstrate value for money and ability to deliver**
- ✓ **Be unfunded/uncommitted**
- ✓ **Significant documentation required**


Strategic National Objectives

-  Enabling a net-zero carbon emissions Aotearoa
-  Supporting towns and regions to flourish
-  Building attractive and inclusive cities
-  Strengthening resilience to shocks and stresses
-  Moving to a circular economy


4

The 'stages' for applications







Stage 1: High Level Problem Statement or Unrealised Opportunity.
No solution has been identified or chosen but may have been explored to quantify the problem.



Stage 2: Optioneering.
Must demonstrate how a short list of potential solutions has been chosen and developed through a rigorous long listing process.




Stage 3: Preferred Solution
A high value option has been chosen from a short list that is capable of being delivered successfully.




5

Size of the infrastructure 'problem'



Stage 1




Cost to Aucklanders

- the economic cost of the problem to Auckland and the broader societal benefits of addressing it.

Cost of a solution

- The cost of a solution to a problem (construction) rather than the full economic impact.


Stage 2



Costs and benefits of different solutions


- Comparing the full economic costs of many solutions to determine the best value for money.

Stage 3



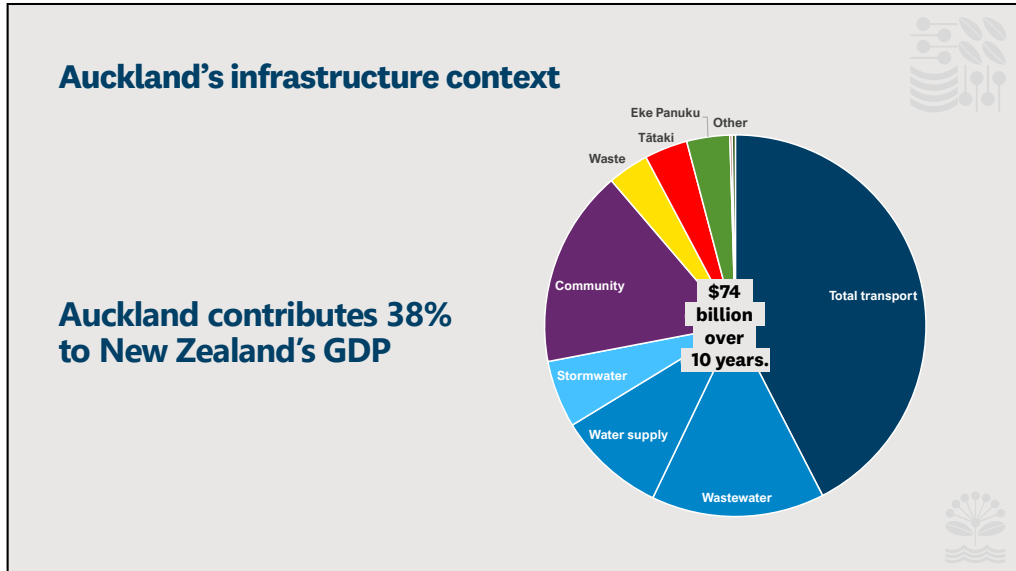
Most benefits for the smallest cost (and ratio >1)

- The solution with the best value for money that can be delivered.



6

3



7

Proposed IPP Submissions - April 2025

Submission Name	Org/Unit/team	IPP Stage
Infrastructure to support growth in Auckland	Auckland Council Lead with Auckland Transport input	Stage 1
Making Auckland's transport system more efficient	Transport Strategy lead with Auckland Transport Input	Stage 1
Managing Auckland's Growing Travel Demand Through Rapid Transit Expansion	Auckland Transport with Transport Strategy oversight	Stage 1
Using 'Time-of-Use Charging' to reduce congestion	Auckland Transport with Transport Strategy oversight	Stage 1
Renewing our aging Ferry Fleet	Auckland Transport with Transport Strategy oversight	Stage 1
Delivering blue-green networks for flood resilience	Healthy Waters	Stage 1
Alternative stormwater management methods for intensification	Auckland Council lead with Healthy Waters	Stage 1

8

12/03/2025

Item 10

Attachment A

Rapid Transit - Stage 2 and 3 Submissions

Select projects from Managing Auckland’s Growing Travel Demand Through Rapid Transit Expansion (Stage 1 Submission)

Managing Auckland’s Growing Travel Demand Through Rapid Transit Expansion	Stage 1	Submission Name	Stage
Seven Corridors		Airport To Botany Connecting Auckland Airport, Manukau, and Botany, with rapid transit.	Stage 3
<ol style="list-style-type: none"> Airport To Botany Northwest Rapid Transit City Centre to Mangere (PT corridor) Upper Harbour RTN (SH18) Second North Shore RTN (PT corridor) Northern Busway Enhancements Eastern Busway Botany Station 		Northwest Rapid Transit A bi-directional busway with seven stations along SH16.	Stage 2
		Northern Busway Enhancements Extending and expanding the successful Northern Busway by upgrading stations, city infrastructure, and addressing missing links.	Stage 2
		Eastern Busway Botany Station Stage 4 of Eastern Busway including the Botany station	Stage 3

9

Watercare IPP Submissions – April 2025

Application Name	IPP Stage
Water Servicing for Growth and Resilience Addressing the challenges of growth and resilience through a comprehensive programme focusing on enhancing water assets and exploring future water sources.	Stage 1
Wastewater Network Improvements for Cleaner Waterways and Beaches Addressing Auckland’s ageing wastewater network, reducing vulnerability to sea level rise and reducing frequent overflows during wet weather.	Stage 1
Wastewater Treatment Plant Climate Change Resilience & Asset Protection - Mangere & Rosedale Enhancing community, cultural and environmental outcomes to ensure resilience to climate change both through flooding and sea level rise	Stage 1
Biosolids Servicing Beyond 2035 Ensuring the reliable servicing of Auckland’s biosolids can continue uninterrupted beyond 2035 and is resilient to future demand and external considerations.	Stage 1

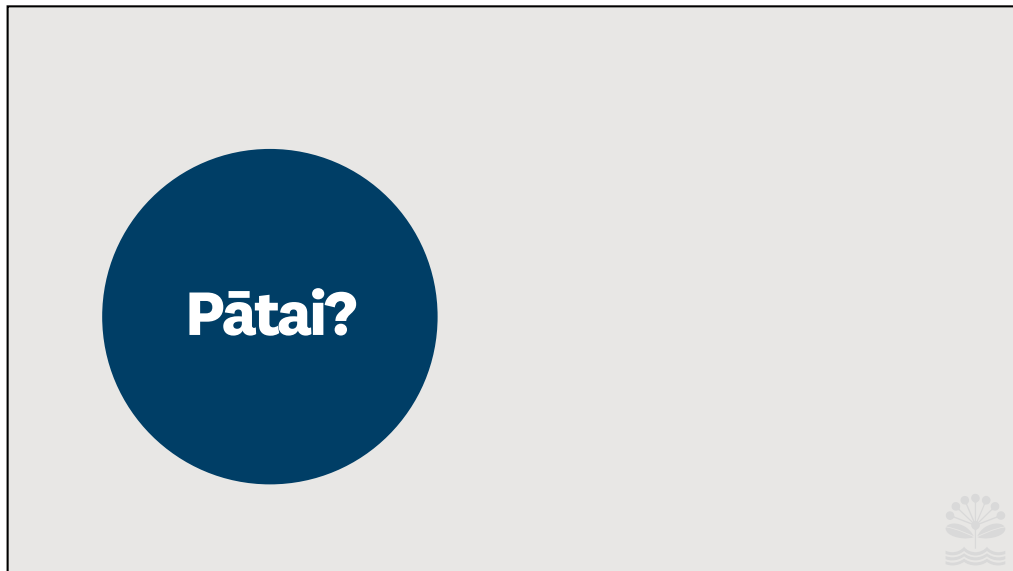
10

5

Potential Future IPP Submissions

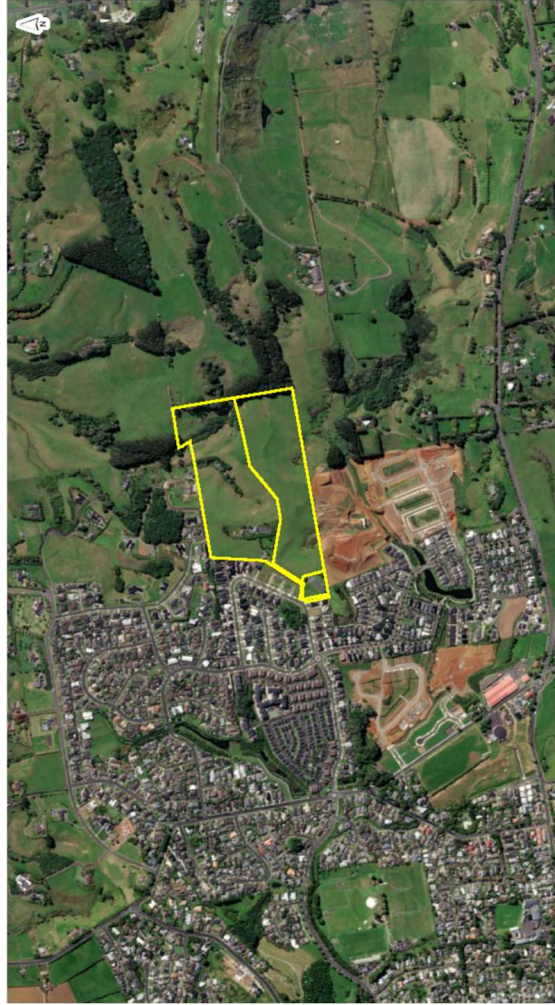
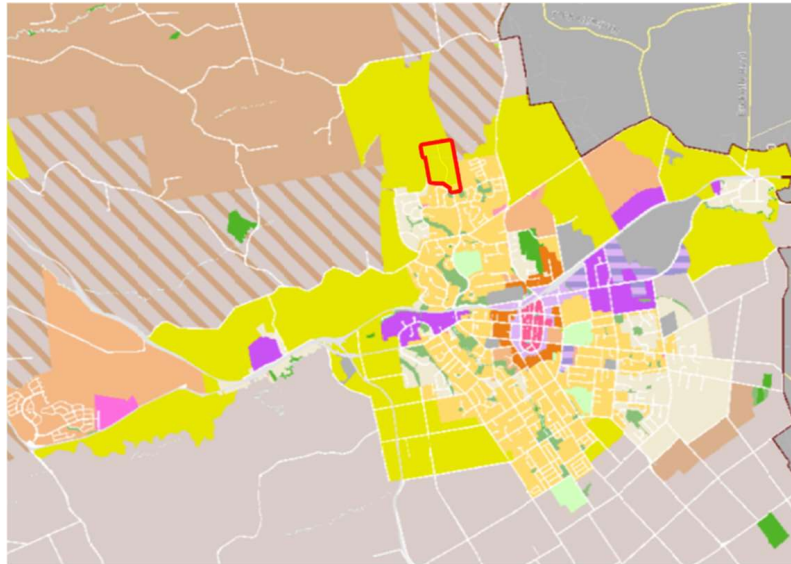
Submission Name	Lead
Auckland city Centre Waterfront - Wynard to Marsden improvements	Eke Panuku
Group climate adaptation and emissions reduction	Infrastructure Strategy Team
Investment in the stadium network	Tātaki Auckland Unlimited
Closed landfill risk management and adaptation	Closed Landfills
Coastal asset management and adaptation	Resilient Lands and Coasts
Onsite water reuse	Healthy waters with Watercare input
Resource recovery	Waste Solutions
Planning for infrastructure with Māori, access to infrastructure, enabling papakāinga, water quality, environmental and infrastructure resilience.	Infrastructure Strategy Team and Ngā Mātārae

11



12

**Private Plan Change at 70, 70A and 70B Lisle Farm Drive, Pukekohe –
processing decision sought**



Area:

- 19 hectares

Rezoning sought:

- Residential – Mixed Housing Urban

Precinct:

- A 'Lisle Farm Precinct' with specific provisions

