

Date: Thursday 20 March 2025
Time: 12.00pm
Meeting Room: Howick Local Board Meeting Room
Venue: Pakuranga Library Complex
 7 Aylesbury Street
 Pakuranga

Howick Local Board

OPEN ATTACHMENTS

ITEM	TABLE OF CONTENTS	PAGE
8.1	Deputation - Dr Julie Chambers - Co-Chair Tāmaki Estuary Environmental Forum (TEEF)	
	A. 20 March 2025, Howick Local Board: Item 8.1 Deputation - Dr Julie Chambers - Co-Chair Tāmaki Estuary Environmental Forum	3
8.3	Deputation - Dr Rashi Parker - Birdcare Aotearoa – Immediate concerns for taonga birdlife in biodiversity threats	
	A. 20 March 2025, Howick Local Board: Item 8.3 Deputation - Dr Rashi Parker - Birdcare Aotearoa	13
12	Chairperson's Report	
	A. 20 March 2025, Howick Local Board: Chairperson's Report - Chair Light's Written Report	27
13	Auckland Transport Kōkiri / Local Board Transport Agreement Quarterly Update - March 2025	
	A. Kōkiri Quarterly - Schedule of Kōkiri Agreement updates	31
	B. Kōkiri Quarterly - Road maintenance activities	37
	C. Kōkiri Quarterly - Update on local road death and serious injury	39
14	Kōkiri - Setting priorities for Auckland Transport project and programme engagement	
	A. 2025-2026 Forward Works Programme Brief	41
15	Proposed new community lease to Pakuranga and Howick Budgeting Service Incorporated at 7 Aylesbury Street, Pakuranga	
	A. Site Plan	107

Note: The attachments contained within this document are for consideration and should not be construed as Council policy unless and until adopted. Should Councillors require further information relating to any reports, please contact the relevant manager, Chairperson or Deputy Chairperson.

	B. Community Outcomes Plan (COP)	109
	C. Mana Whenua/Iwi	111
16	Local board views on draft plan change to add trees and groups of trees to the Auckland Unitary Plan Operative in Part and to the Notable Trees overlay	
	A. Proposed additions of trees and groups by Local Board, and areas within each Local Board	113
17	Feedback on options to address local board operating cost pressures for Annual Budget 2025/2026	
	A. Options to address local board operating cost pressures and their impact on Fairer Funding implementation – (14 February 2025 JGWP)	115
	B. Memorandum: Local Board cost pressures – additional information (2 Dec 2024)	127
	C. Feedback template	131
18	Urgent Decision of the Howick Local Board to Formalise Feedback on the Draft Storm-affected Land Use Policy	
	A. Urgent Decision of the Howick Local Board to Formalise Feedback on the Draft Storm affected Land Use Policy - Copy of the Urgent Decision Memo	133
	B. Members briefing document: Storm-affected land: policy and implementation	147
	C. Draft Storm-affected Land Use: policy and implementation approach	165
21	Record of Howick Local Board Workshop Notes	
	A. 20 March 2025, Howick Local Board - Howick Local Board Workshop Records – 27 February 2025 Record of Workshop	191
	B. 20 March 2025, Howick Local Board - Howick Local Board Workshop Records – 6 March 2025 Record of Workshop	195
	C. 20 March 2025, Howick Local Board - Howick Local Board Workshop Records – 13 March 2025 Record of Workshop	199
22	Hōtaka Kaupapa Governance Forward Work Calendar	
	A. 20 March 2025, Howick Local Board - Hōtaka Kaupapa Governance Forward Work Calendar - Copy of the Hōtaka Kaupapa	203



Why

To protect, sustain and advance the health of the Tāmaki Estuary, River and its communities to achieve climate change resilience, minimised pollution, high water quality and protect biodiversity.

A Local Board supported initiative



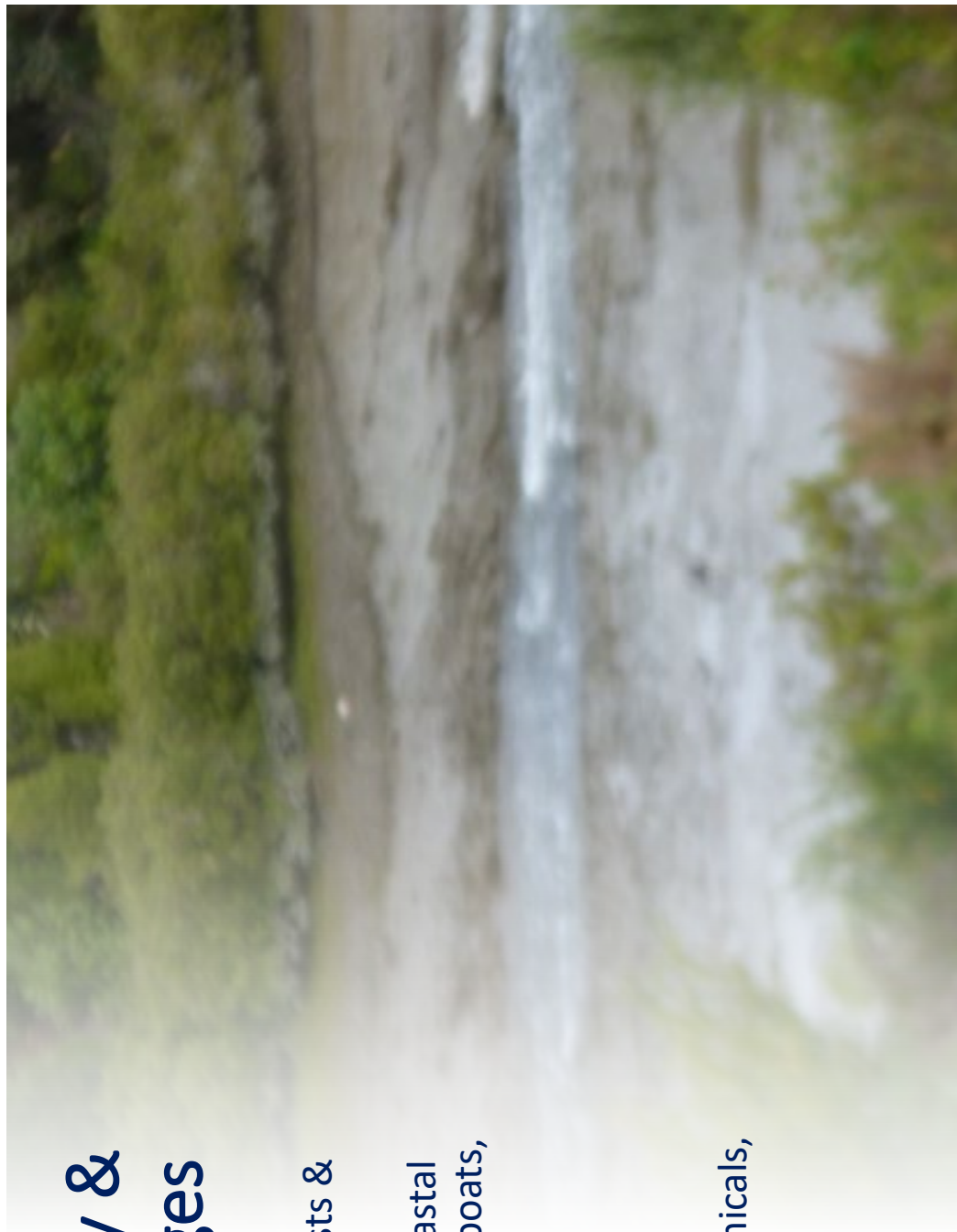
How

*Communicate, Coordinate, Educate,
Support – find solutions – &
Celebrate Results*

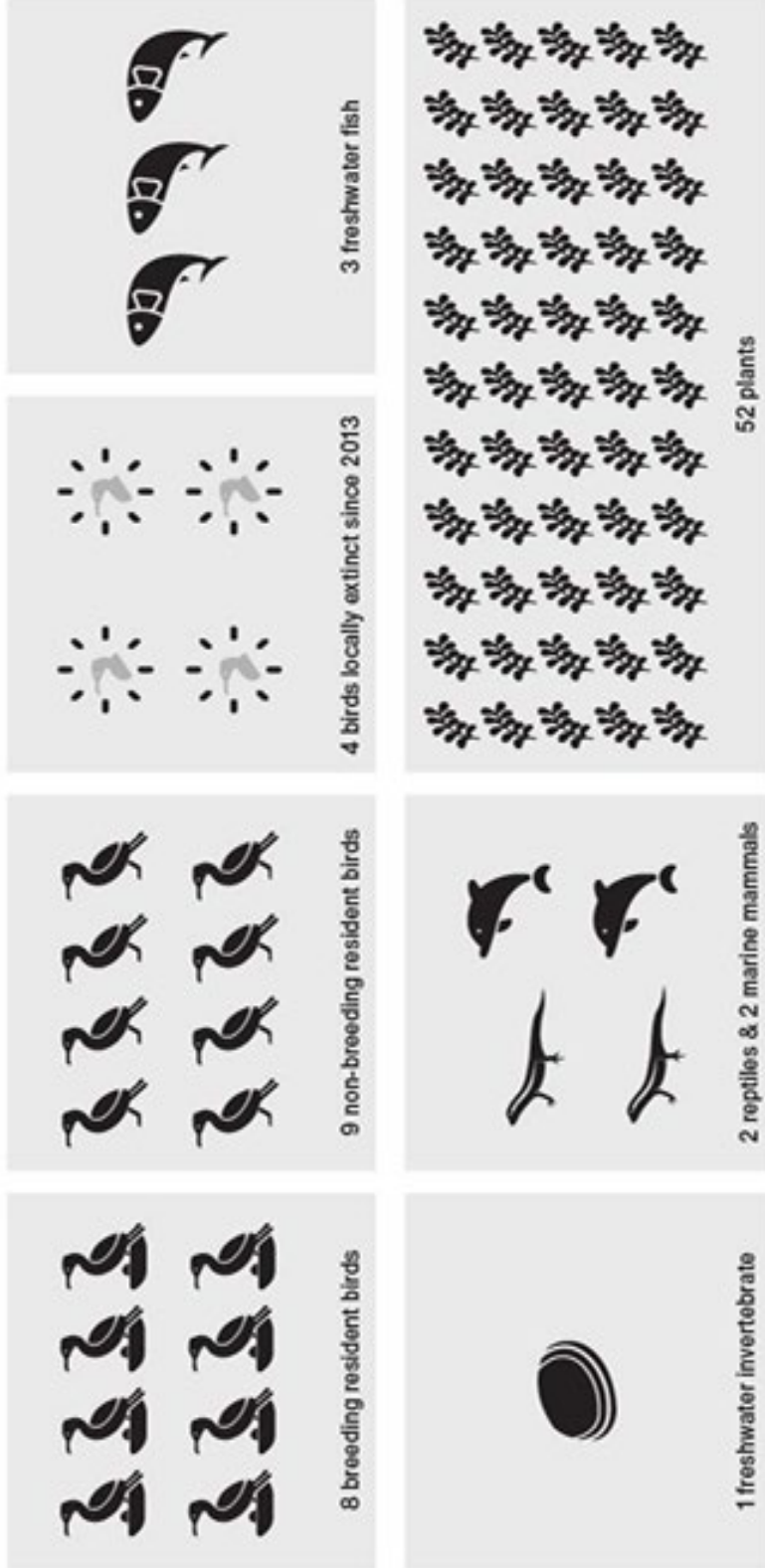


Tāmaki Estuary & River: Challenges

- **Loss of biodiversity** pests & loss of habitat
- **Climate & Change** – coastal erosion, more people, boats, biosecurity risk,
- **Pollution**
 - Plastic pollution
 - Unknown & toxic substances – chemicals, paint, detergents, asbestos, sediment
 - Sewage

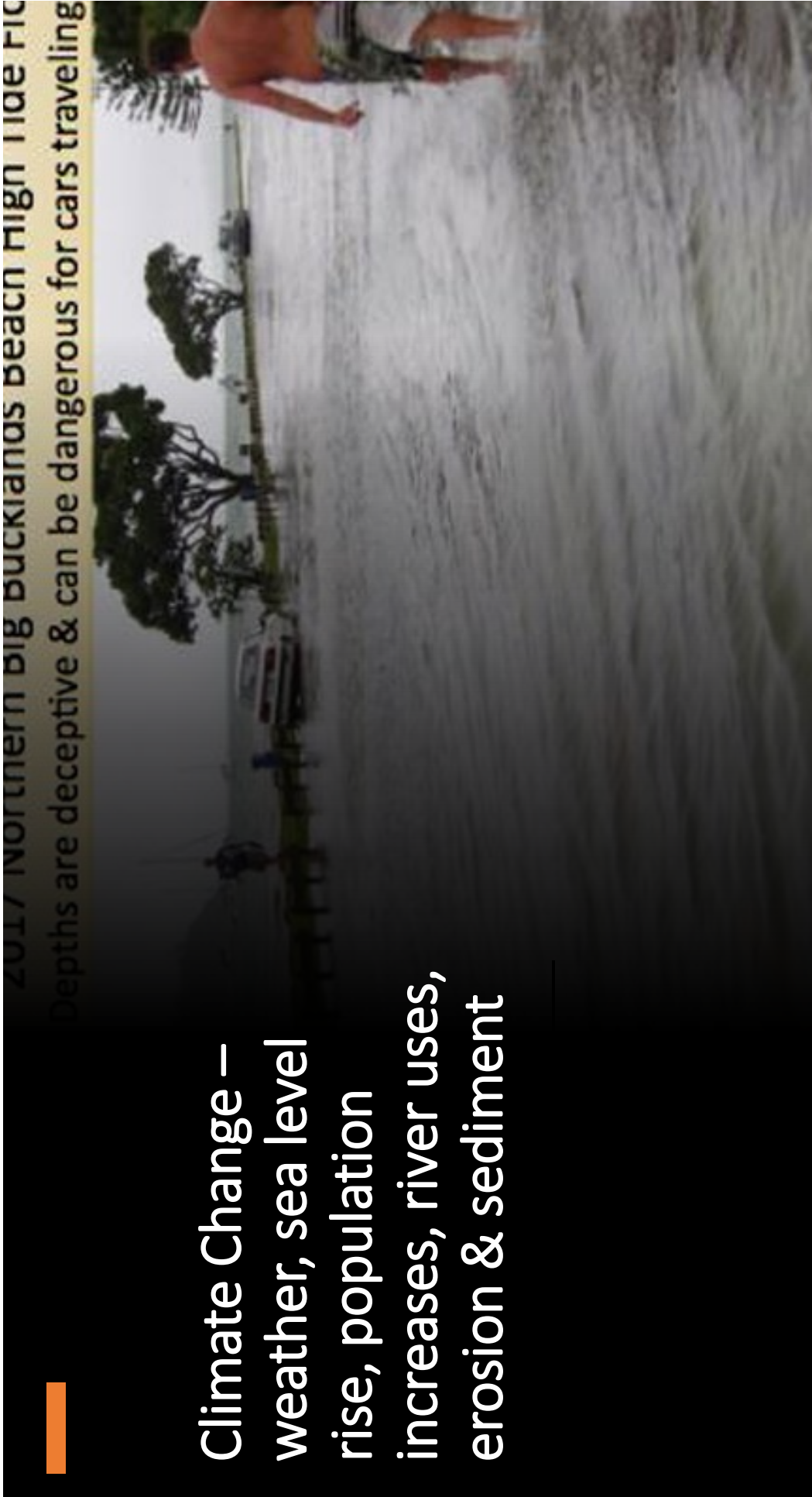


Loss of biodiversity: Pests and habitat degradation



[Shaun Lee – Mostly just stuff I am doing to help the planet](#) Blog Post Feb 15th, 2025

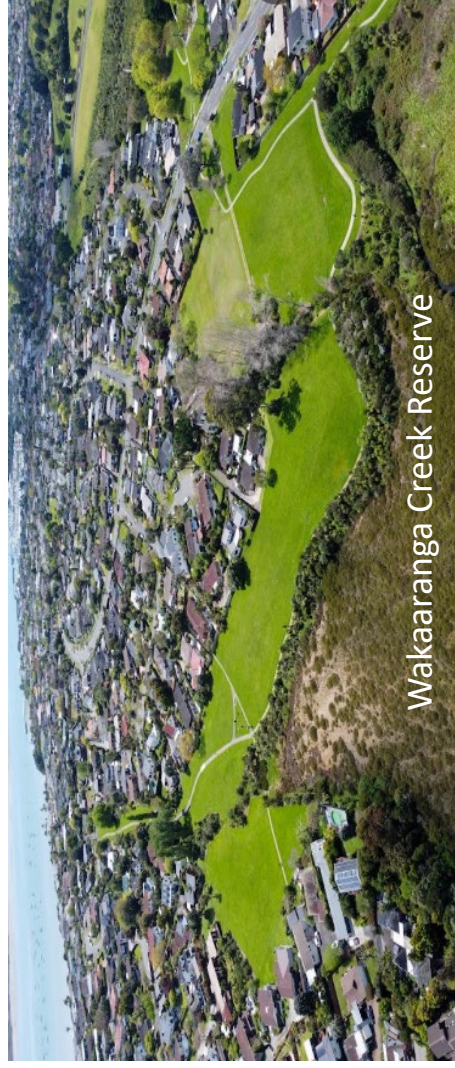
Attachment A
Item 8.1





Let's talk Sewage – Who do you call?

Auckland sewage pipes have Engineered Overflow Points (EPO) that release **raw sewage** into the local receiving environment: local stream, or park



Faults and outages

Report a non-urgent fault

Monday to Friday: 6:30am to 10:30pm

Saturday to Sunday: 7am to 5pm

[Launch Chat Agent H2Rrc](#)

Update an existing fault

Please let us know if you have an update online.

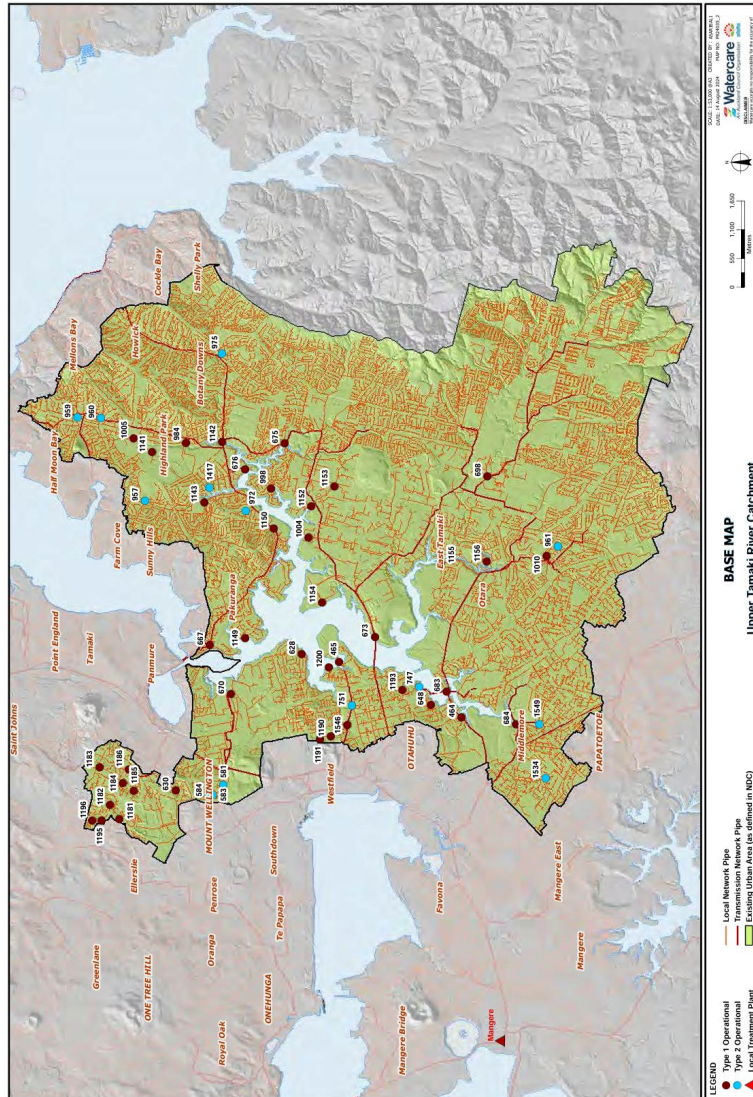
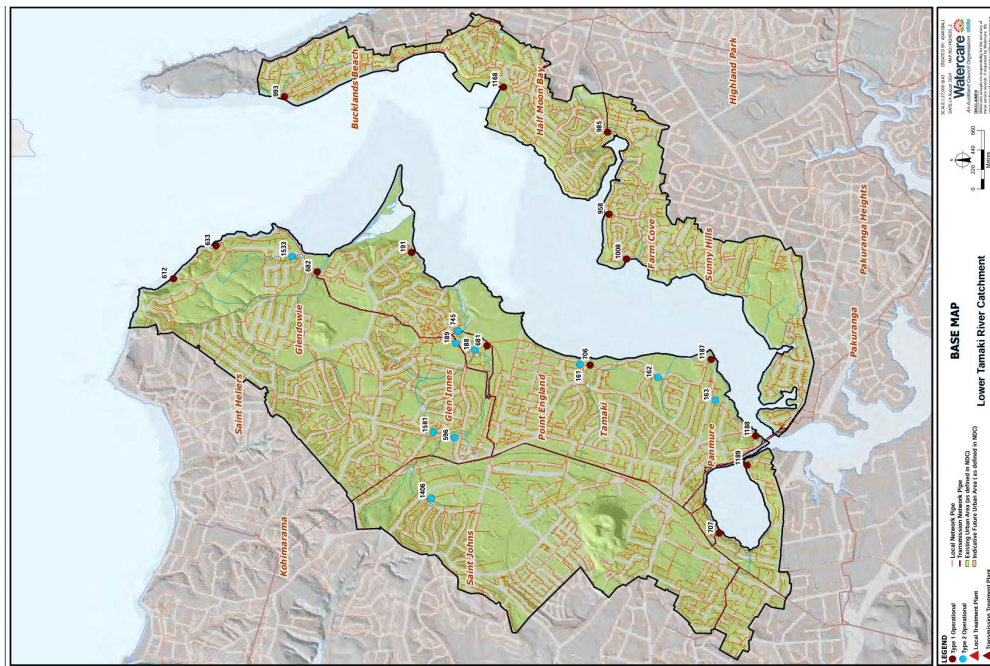
[Fill in our form](#)

Report an urgent fault 24/7

We're here to help.

[Call \(09\) 447 7777 - nracc 1](#)

The Upper Tamaki River Catchment is the largest of 36 and has been one of the five worst catchments for Dry and Wet weather raw sewage overflows every year for the past 5 years. *Watercare Auckland Wide Discharge Consent Report 2024 page 28 of 758.*

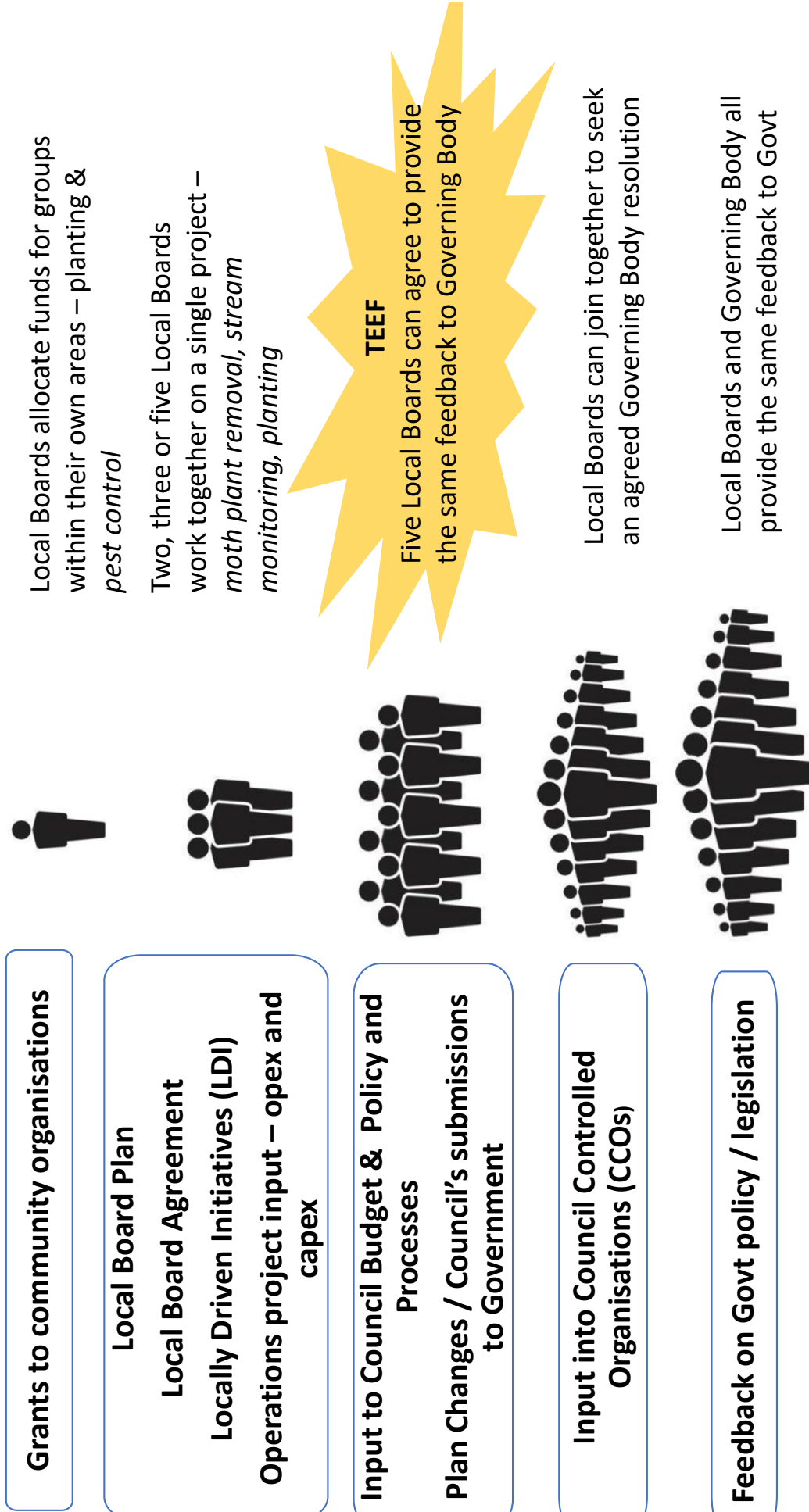


How do we know if our streams are polluted?



A happy, intrepid family boating up Ōmaru Creek 2023

- During 2023-2024 Ōmaru Creek
- received **47** separate dry and wet weather raw sewage overflow events into its water.
- Pakuranga Stream is likely to be worse.



tēnā koutou – uiuinga / questions?



BirdCaring across Auckland: Rehabilitation of native and endemic taonga at our bird hospital



Auckland Council Local Boards 2025
Dr. Rashi Parker,
support@birdcareaotearoa.org.nz
BirdCare Aotearoa Charity Reg. CC37288

