

Date: Tuesday 25 March 2025
Time: 9.30am
Meeting Room: Leslie Comrie Board Room,
Venue: Level One Franklin: The Centre,
 12 Massey Ave,
 Pukekohe

Franklin Local Board

OPEN MINUTE ITEM ATTACHMENTS

ITEM	TABLE OF CONTENTS	PAGE
8.1	Deputation - Franklin Active Trails - Economic opportunities	
	A. 25 March 2025 Franklin Local Board - Franklin Trails presentation	3
8.2	Deputation - Counties Manukau Sport	
	A. 25 March 2025 Franklin Local Board - Counties Manukau Sport presentation	19
24	Chairperson's Update	
	A. 25 March 2025 Franklin Local Board - Chairs March report	29
	B. 25 March 2025 Franklin Local Board - letter B Scott deputation	31
	C. 25 March 2025 Franklin Local Board - TWIMC Buckland Hall letter of support	33
	D. 25 March 2025 Franklin Local Board - Āwhitu Golf letter of support	35
	E. 25 March 2025 Franklin Local Board - Fulton Swim School letter of support	37
	F. 25 March 2025 Franklin Local Board - Local Board Chairs letter to Mayor re Fairer Funding	39

HAURAKI RAIL TRAIL

Choose your ride Ride Experiences Tour Services Accommodation Dine & Drink See & Do



- \$35 Million to local economy. Benefit Cost Ratio (BCR) 1:17. Motels, Bike hire, tour guides, food, nick naks, trail maintenance
- Council spend less than \$2 Million/yr. 1.8 FTE + contracted work
- 159,000 rides a year Grade 1 (easier grade trail – wider target market)
- \$320/person spend/day
- Charitable Trust - Hauraki, Thames-Coromandel and Matamata-Piako Council Repts + 3 lwi.
- Started with a 61km Rail corridor 2012. Diane Drummond on board to resuce 2017. Now over 160km
- Focus has been on changing towns from 'Service towns' to 'Destinations' More than 1 day a low far C

Franklin Local Board Missing Out

- **Need to unlock the economic opportunities of Cycle Trails in Franklin**
- **Enable Service Towns to become ‘Destinations’**

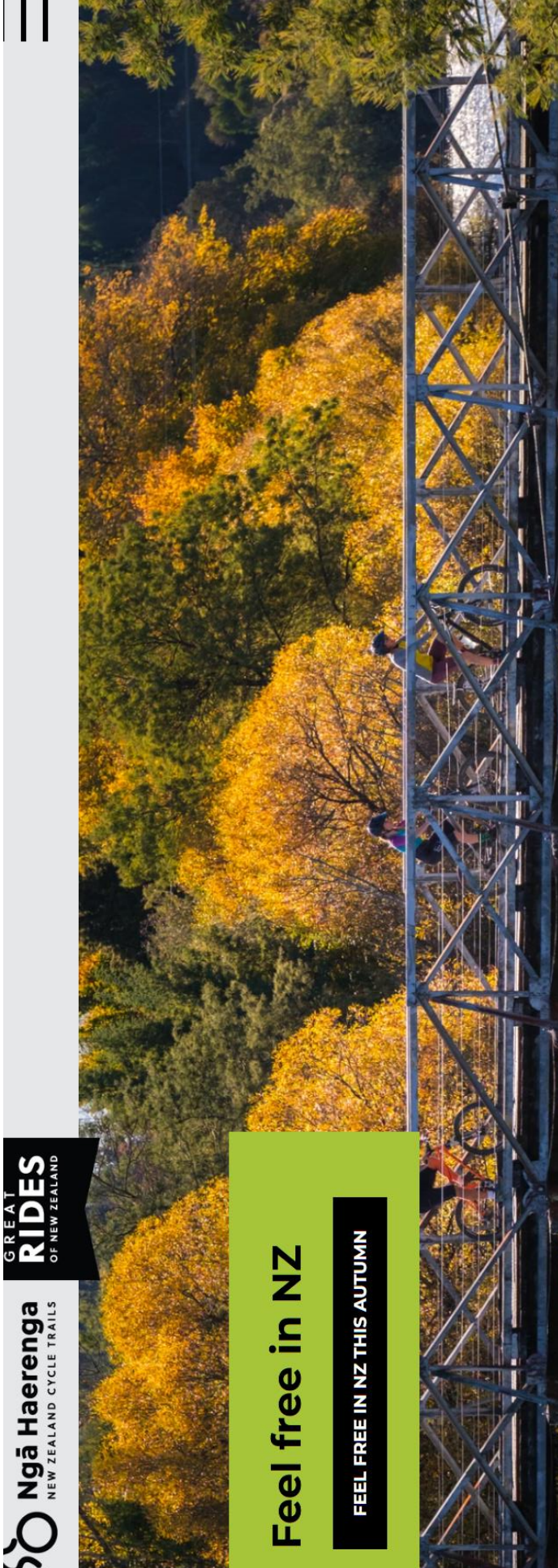
The Ask of FLB

- 1 Workshop** Resolution suggest – FLB nominated representative(s) with Franklin Active Trails, form a Regional workshop to begin discussions with Christina and Lyn Robinson, Tataki Auckland Unlimited Trails. Include Regional Trail Folk. ‘Unlocking the Cycle Trails opportunity’
- 2 Kiwi Rail** Resolution suggest – FLB nominated representative to work with Franklin Active Trails with their Stage 1 Kiwi Rail corridor access request. Drive working beyond Kiwi Rail Stage 1 email negotiations.
- 3 Trails Plan** Resolution suggest – FLB Action Regional Franklin Trails Plan development now. In line with Targeted Rate budget allocation. Ensure Trail folk involved including ourselves in plan development. Leverage local knowledge.

3

Item 8.1

Attachment A



- \$1 Billion Industry due to grow to \$2 Billion in 10 years
- 1:9 BCR
- Green Tourism
- Growing world attraction
- Almost all Great Rides +40Km

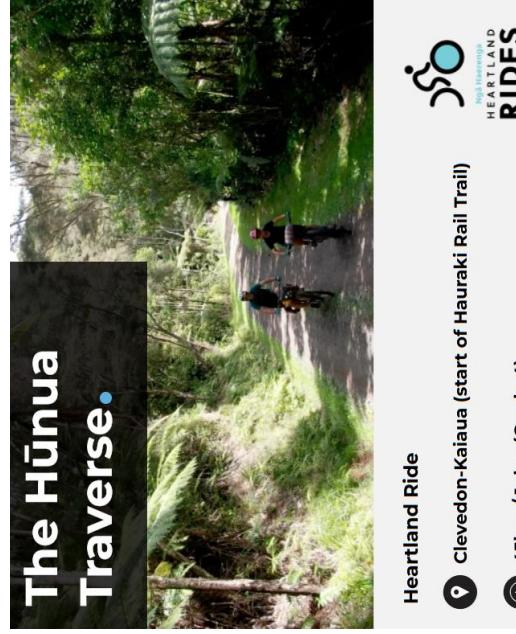
FIND YOUR RIDE

HEARTLAND & CONNECTOR RIDES

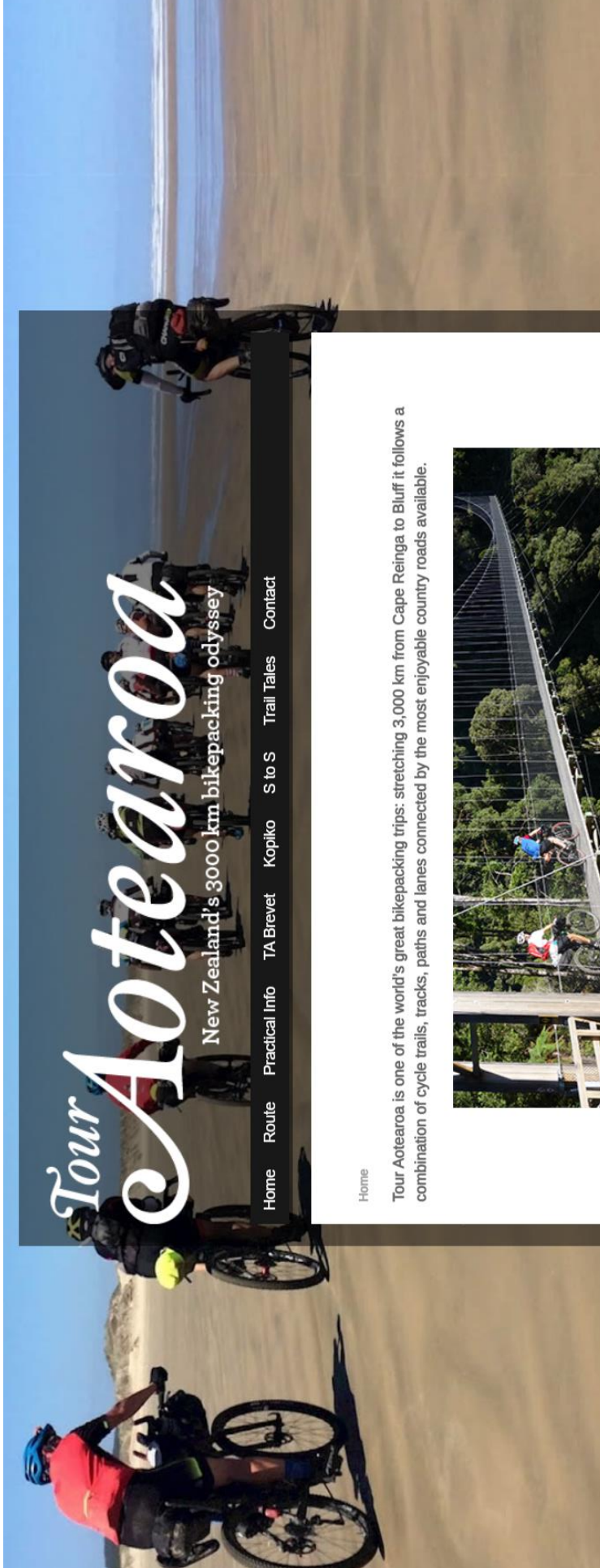
Explore New Zealand on Heartland Rides, mostly on-road routes through scenic landscapes & small towns. Connector Rides provide the safest & most enjoyable links to these and the Great Rides.

[View all rides on New Zealand Cycling Map](#)

- **Focus on Signage and Story Telling**
- **High km Option** - Primarily uses existing infrastructure of quiet roads and trails
- **Typically + 40Km distance**
- **Circuits or one way**

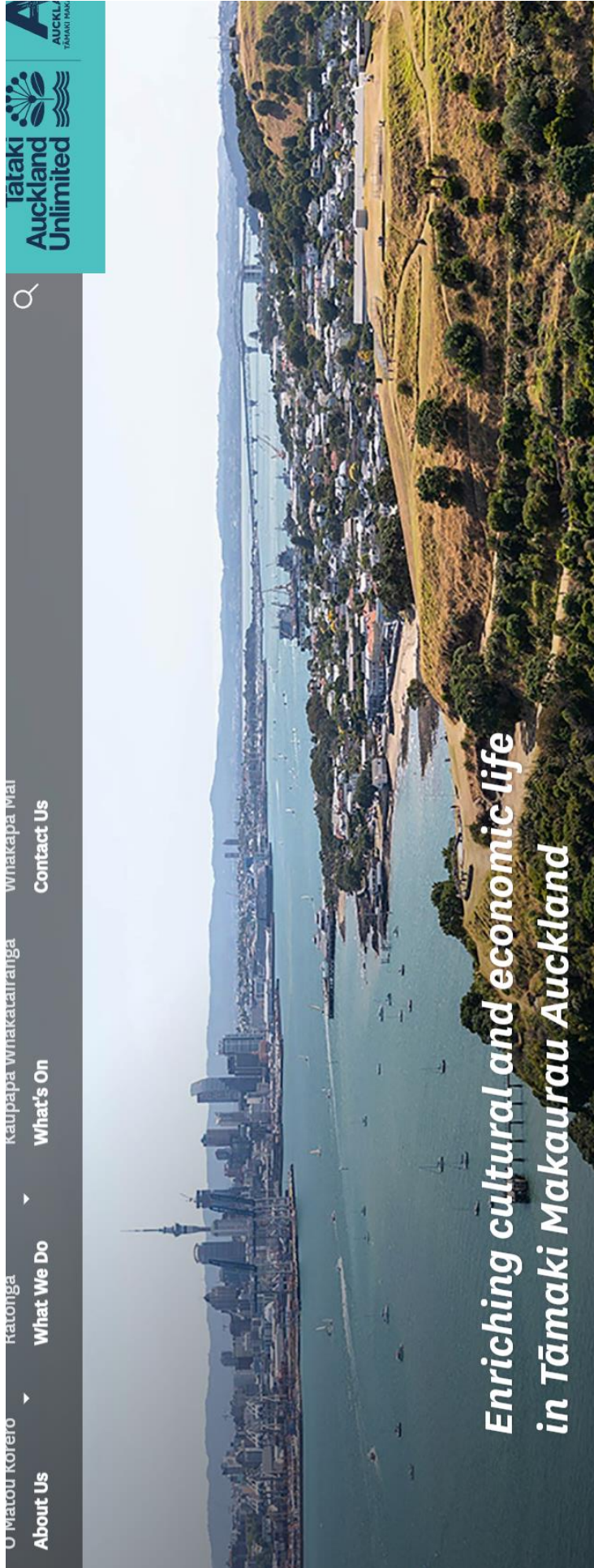


Attachment A
Item 8.1



- Becoming World Famous
- Connecting Great Rides and Heartland Rides
- More than just Cape Reinga to Bluff
- Just keeps getting better and better. Thankyou Kennett Brothers

c



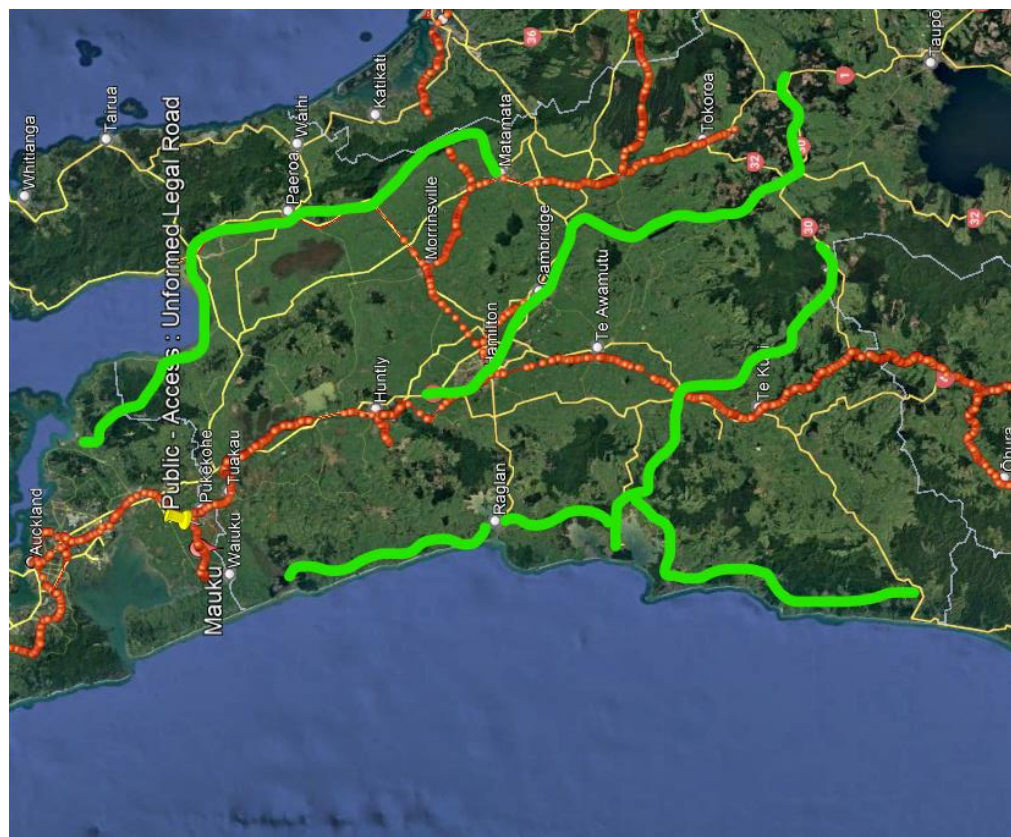
Viaduct to Viaduct – Cycle Trails

- Diane Drummond Hauraki Trails thinks so
- Franklin Active Trails thinks so
- Herenga A Nuku think so. Developed large report connecting Franklin - Waikato
- NZ Cycle Trails and Kennett Brothers love 'connection'

7

Akld Viaduct to Viaduct

- **Hauraki Rail Trail** Stops at Kaiaua. Hunua Traverse links to Clevedon but usually closed midweek.
- **Waikato River Trail** Currently stops at Ngaruawahia
- **West Coast Heartland Ride** Developing from Pureora – Otorohanga – Kawhia – Raglan - Port Waikato or cut through to Tuakau. Also Awakino – Kawhia and north. Connect north beyond Tuakau or Port Waikato?



cc

Akld Viaduct to Viaduct

The future Trails

Could look like this.

- At least 3 main routes into Auckland from the south including ferry service Clarks Beach, Te Toro, Matakawau. Perhaps also like Raglan a small ferry service to get from Port Waikato – Hoods Landing
- Lots of east west options across Franklin and connecting with 4 Railway Stations



9.

Franklin Active Trails Suggests for Initial Focus

Heartland Ride and Connector ride concept

Signage and story telling for immediate high km of connection.

Eg: 200km in 3 years

- Pukekohe 5 Summits + 6 summit + 8 summit + 10 summit options
- Pukekohe/Paerata – Patumahoe – GVR – Waiuku
- Patumahoe – Clarks Beach etc – Manukau Harbour via ferry
- Connecting communities east and west from 4 Railway Stations to make our towns **‘Destinations’** and not just service towns

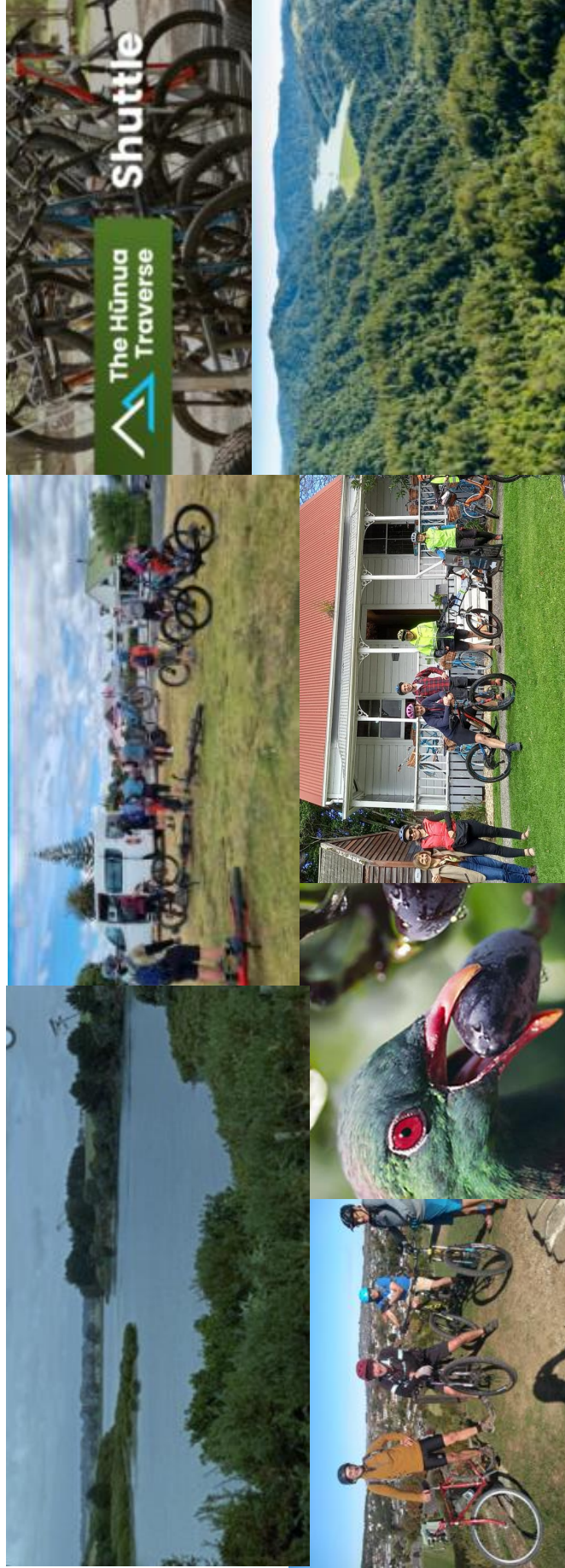
Franklin Opportunity – Cycle Trails

Potentially ‘Greener’ and enhanced BCR compared to rest of NZ

Closer to where most people live

Connecting with 4 Railway Stations

Stunning and varied scenery



11

Kiwi Rail Corridor Patumahoe - Pukekohe

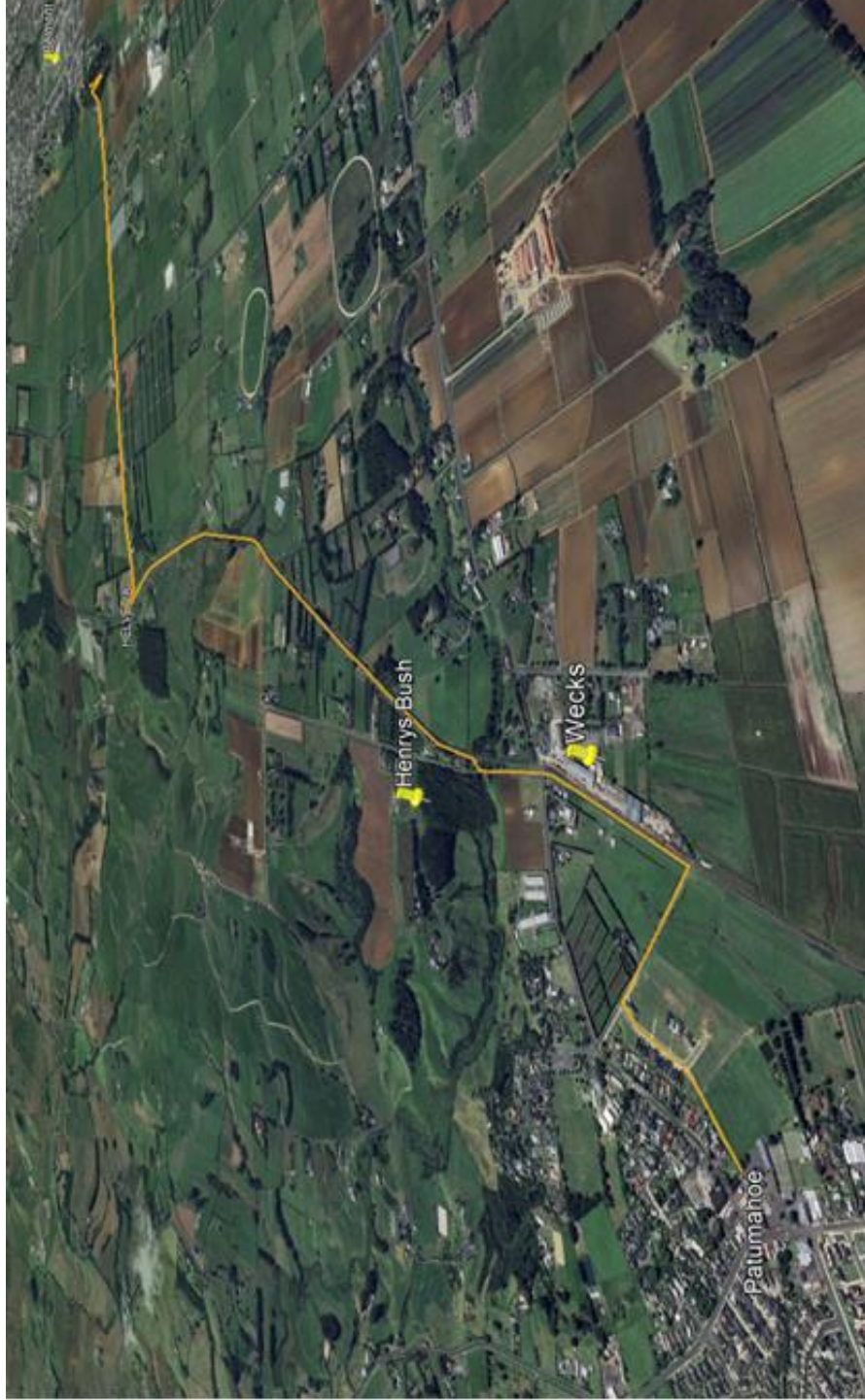
Background

To get from Pukekohe to Patumahoe there are no quiet road options or other non road corridors apart from the Kiwi Rail Mission Bush line. This combined with unformed legal access roads gives potential excellent, safe and direct connection from Patumahoe to several parts of Pukekohe and potentially Paerata. It opens up options for continuation of a Trail all the way to Waiuku and a link for a Trail connecting Patumahoe – Clarks Beach.

The link enclosed is drone footage from one of the potential corridors linking Patumahoe to Hart Rd on the northern side of the railway line.

<https://youtu.be/fpuz7ljLo5o>

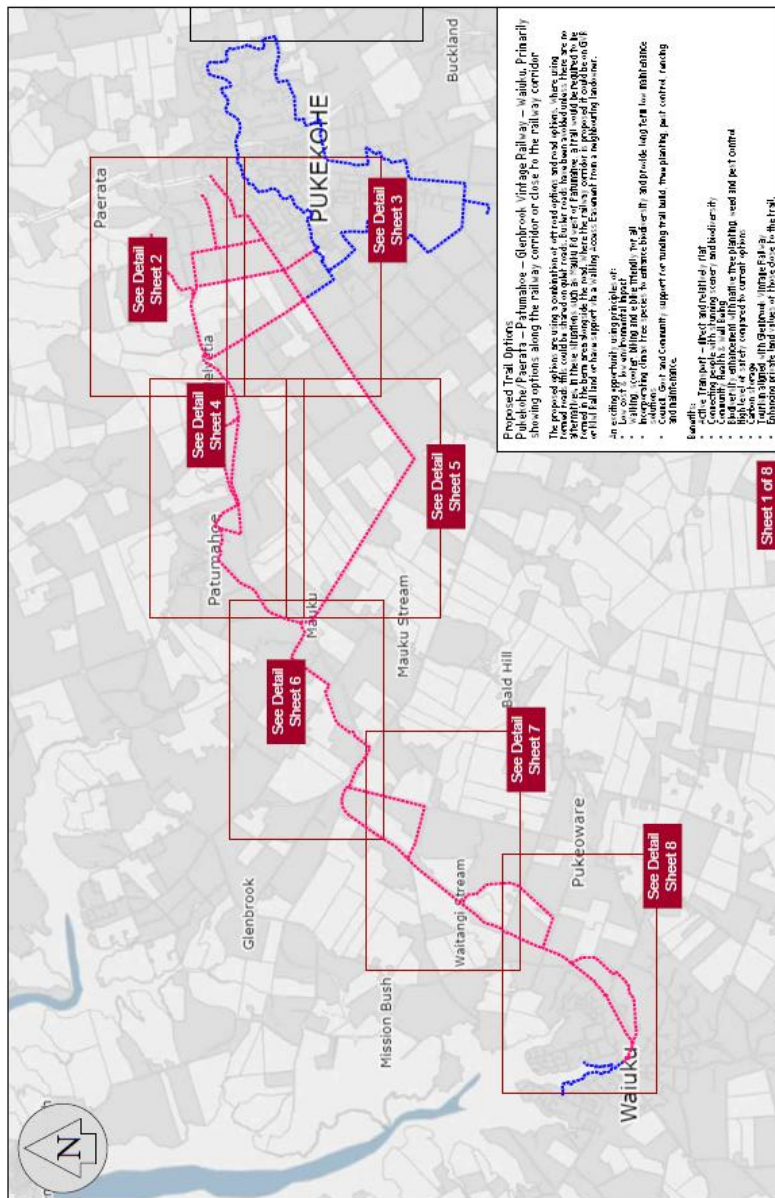
Patumahoe to Pukekohe Rail Corridor



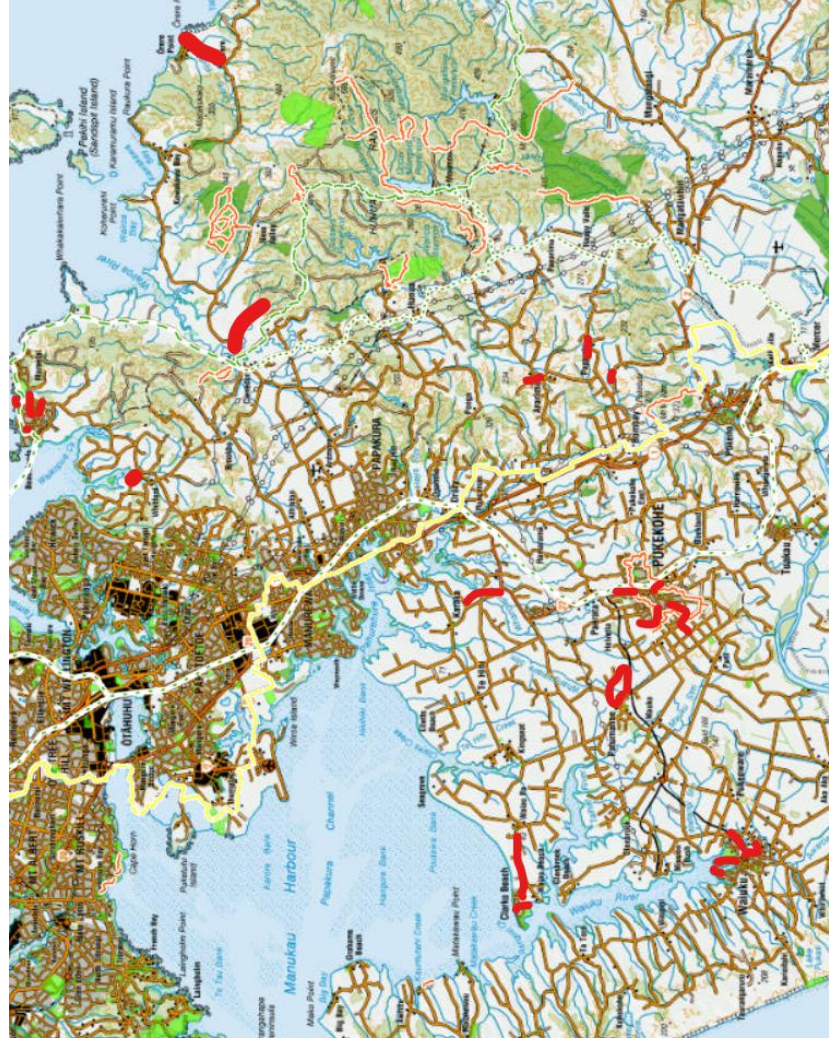
1.3

Pukekohe/Paerata – Patumahoe – GVR – Waiuku

(Identifies several options)



Current FLB Targeted Rate priority Trails in red



1.5



Franklin Local Board

Counties Manukau Sport
Deputation March 2025





Briefing



Counties Manukau Sport have partnered with Franklin Local Board to provide free community activities for Tamariki and Whanau to engage in their community

- After School Dance
- BMX Have a Go
- Off Road Riding Have a Go
- Junior Sports Awards
- Sporting Excellence Awards
- Skateboarding Have a Go
- Santa Fun Runs
- Primary Schools FMS and Bikes in school delivery
- Clarks Beach Golf Club partnership
- School Holiday in the Pukekohe Town Square
- Bike Bus



Local Board
Auckland Council
After-School Dance Kawakawa Bay

Summary: Targeting youth to enroll in Hip Hop dance classes at the beginner level led by Groovfit Dance Studio. 8-week programme is 45 minutes classes for 5 to 9 yrs, and one hour class for 10 yrs to 14 yrs.

Community Context: Kawakawa Bay is an isolated community with limited events outside of school. Final session is a final performance in front of family and friends, with a shared supper.

Attendance Challenge: 13+ years old unable to attend due to high school commitments outside the local area

Where to next?: Weekly community gatherings. Proposal to use the dining space for younger siblings to engage in lawn games. Ready Steady Go equipment. Historic event for the last 4 years.

“It’s awesome my daughter has done it for about years now and absolutely loves it.”

“The chance for our children to experience a group activity and learn a new skill. We don’t have many extra curricula activities in our area and Angela and the team do such a fantastic job providing something exciting for all the children. Well organized and fun and engaging.”

“We hope activities such as this continue to be offered locally.”

“It was excellent to have an extra curricular activity in the community and was wonderfully well run. Our local Tamariki had an opportunity to try something they otherwise wouldn’t have which is always a fantastic thing to have access to.”





BMX Have A GO



Summary:
Have a go programme targeted children 8-14yrs old which consisted of 2 x two-hour sessions per day which included all necessary equipment and bike instructors held at Sunset Coast BMX track.

Community Context:
Partner with Sunset BMX Club to promote membership. Offer 3 free club nights to attendees to encourage club participation.

Attendance Challenge:
Interest from children outside the targeted age. Number of participants per program is limited by the availability of BMX bikes and helmets in the CMS fleet.

Where to next?:
No restrictions on age
Historic holiday event

“Fantastic programme would highly recommend this to others. “

“We liked that the all equipment was supplied, good time of day, good timeframe, great coaches, excellent location and everyone was included no matter what ability.”

