

Date: Wednesday 26 March 2025
Time: 9:30am
Meeting Room: Local Board Chambers
Venue: 35 Coles Crescent
Papakura
Auckland

Papakura Local Board Workshop

OPEN NOTES ITEM ATTACHMENTS

ITEM TABLE OF CONTENTS

3

PAGE

A.	Auckland Transport - Network optimisation	3
B.	Direction Setting	17



The slide features a blue background with a pattern of white, curved, segmented lines resembling a network or fiber optic cables. In the top left corner, there is a small white square containing the Auckland Council logo. In the top right corner, there are two circular logos: a green one with the text "Think before you print" and a white one with the letters "AT" inside. The main title is written in large, bold, white, sans-serif font, and the date is in a smaller white font at the bottom right.

**Papakura Local Board Workshop –
Network Improvements**

26th March 2025

Think before you print

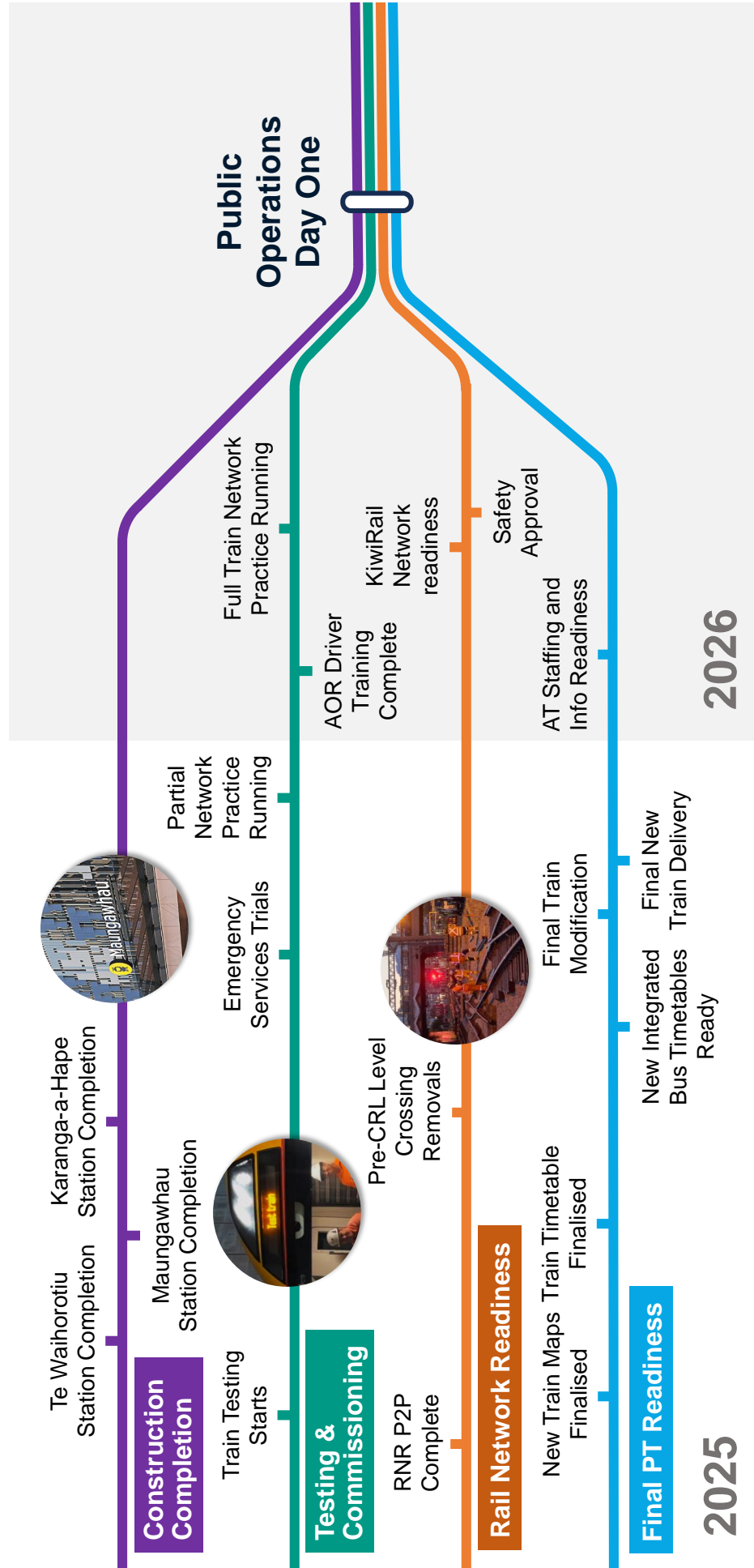
AT

Contents

Agenda Items	
1	CRL and Level crossing works brief
2	Takaanini area works
3	Stages of work and road impacts
4	Dashboard
5	Network optimisation project

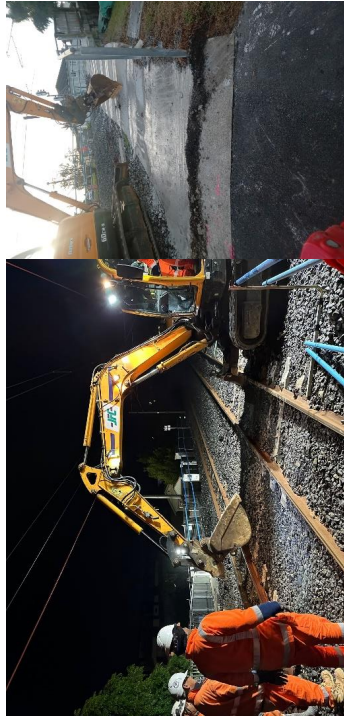


Getting Ready for Day One of CRL

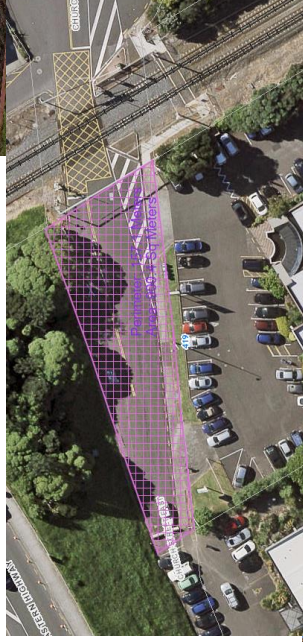


AT has been progressing level crossing removals ahead of CRL

Closure of Lloyd Avenue – Complete



Church Street east – Planned FY 25



Closure of Tironui Station Road east – Complete

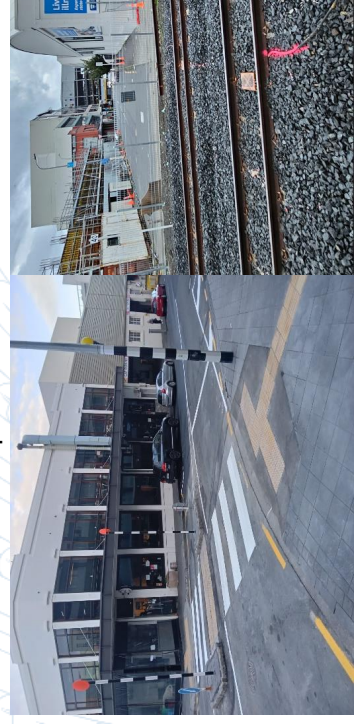
Closure of Corban Estate – Complete



Homai Station – Complete

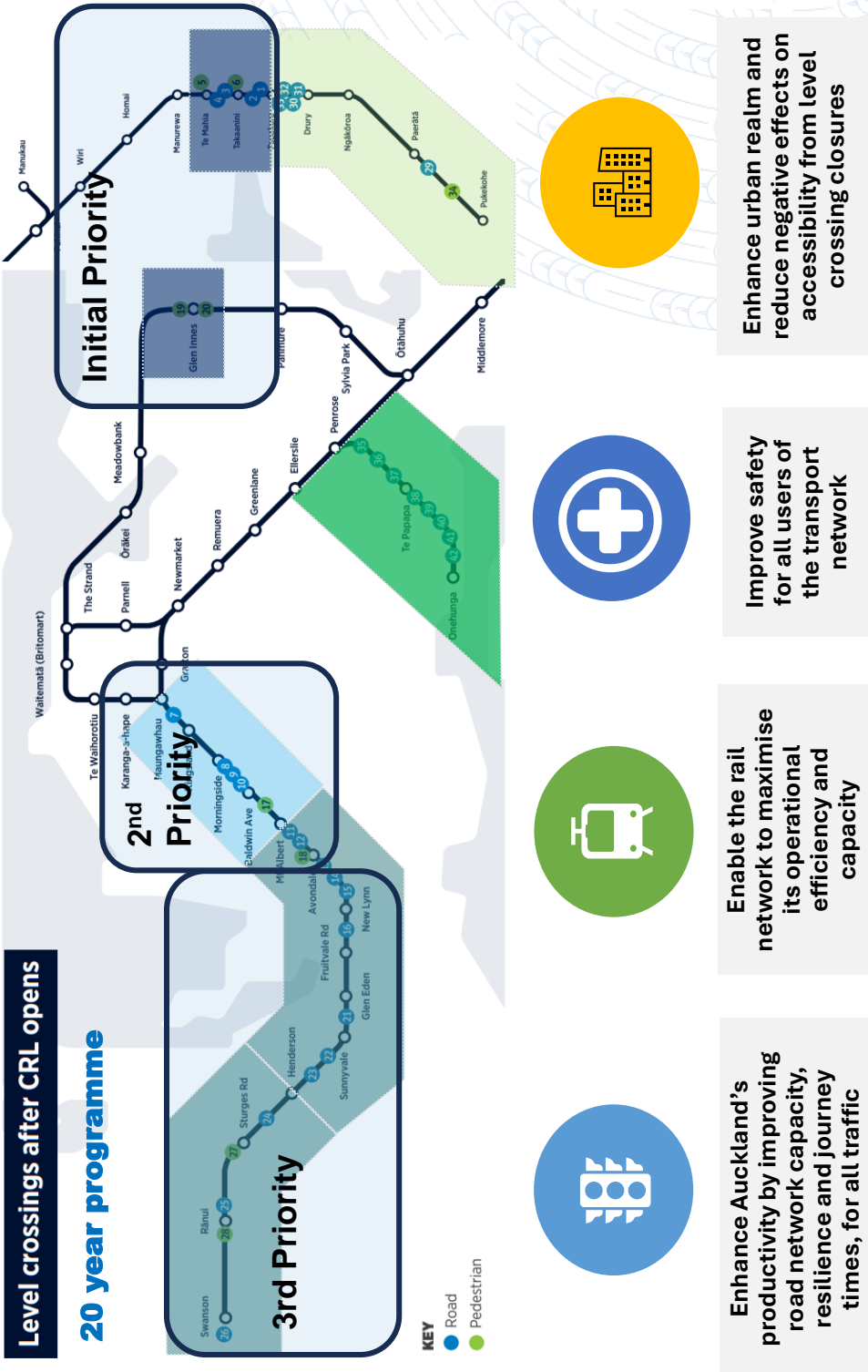


Closure of Kingdon Street – Alternative route to Davies Crescent complete



Over 70% of the road/rail crossings on the Auckland Rail Network have already been grade separated.

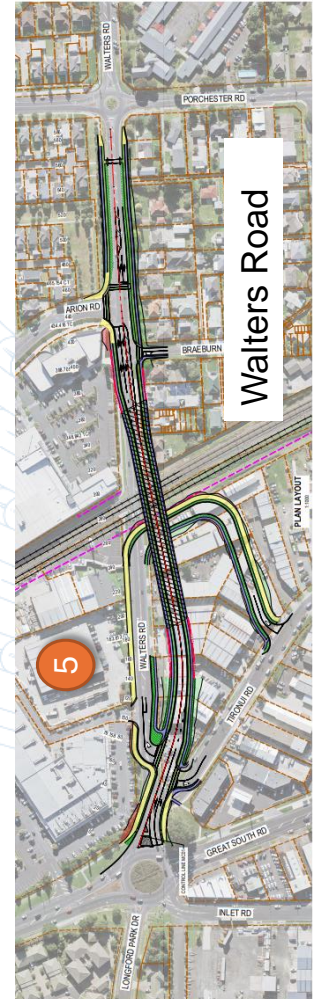
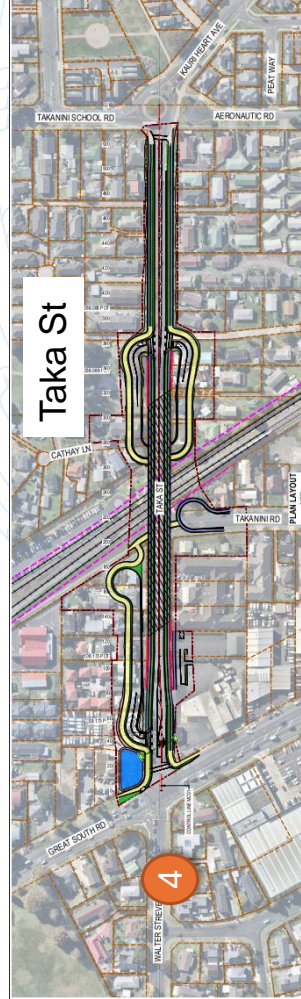
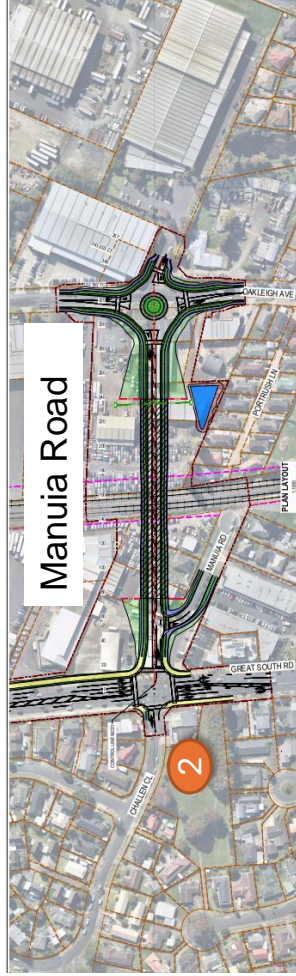
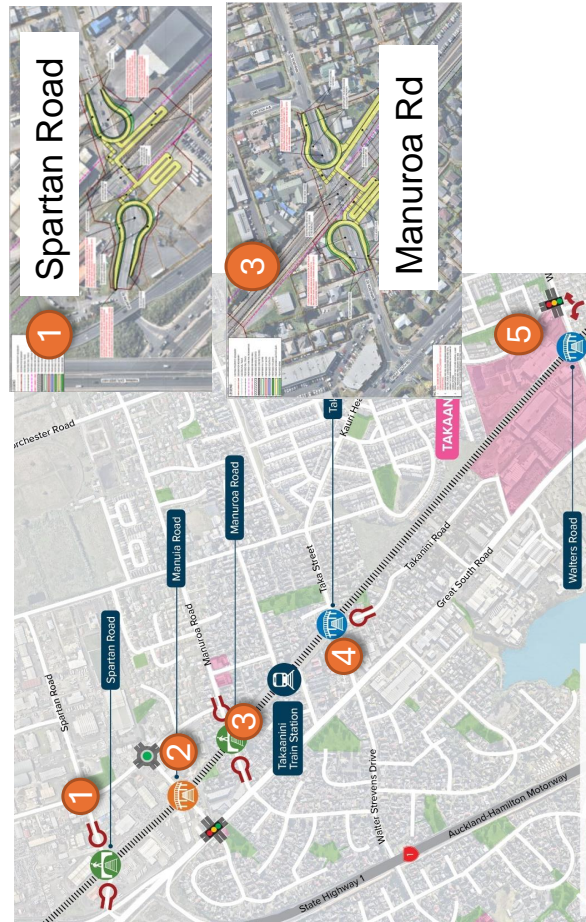
Level Crossings on Metro network



- 1. Takaanini
- 1. Stations
- 2. Inner West
- 3. Mid West
- 3. Outer West
- 4. Outer South
- 5. Onehunga



Takaanini road level crossings –



- Optimisation to manage post CRL traffic impacts
- Notice of Requirement (NOR) decisions released
- Settlement of the 3 NOR appeals and property acquisition critical path
- Opportunities for value engineering and innovation

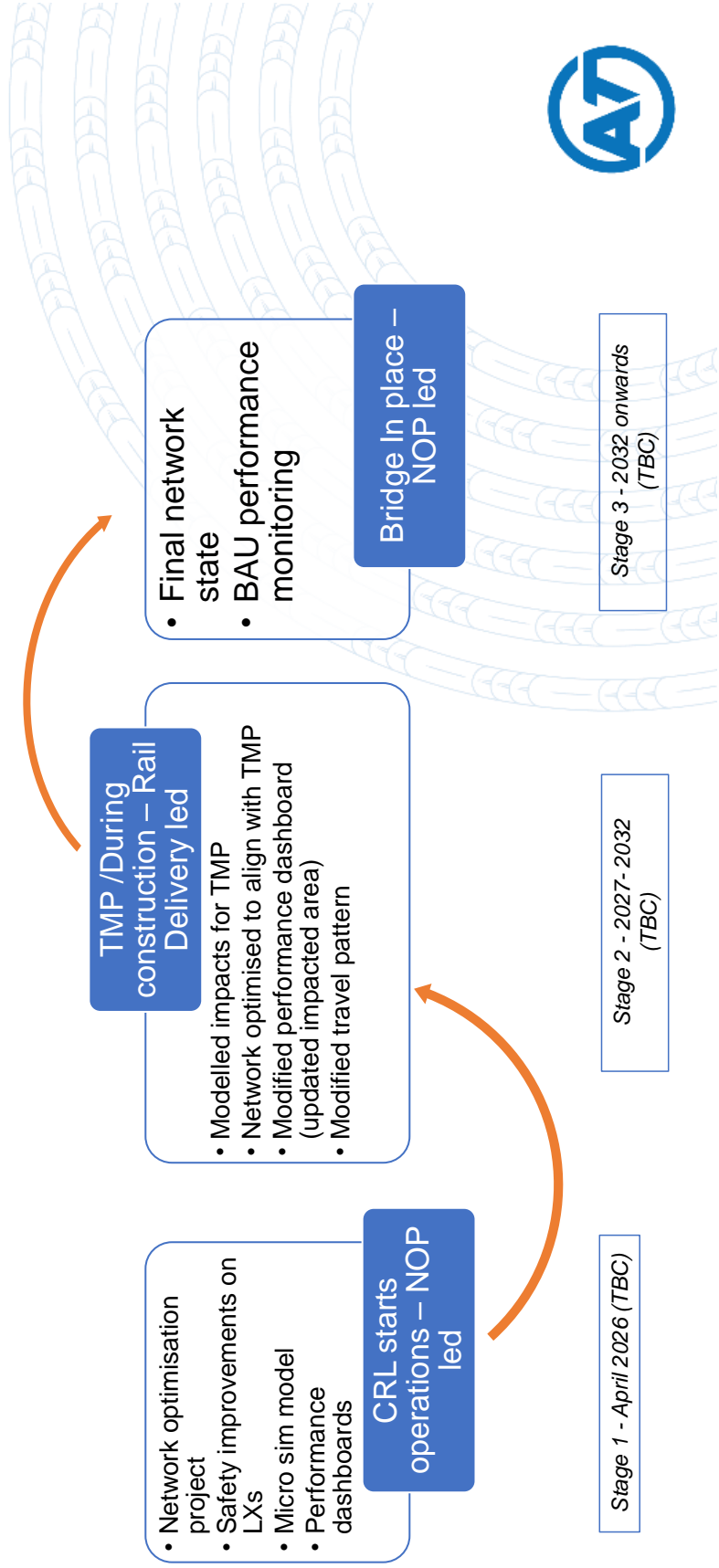
GSR FTN Study update

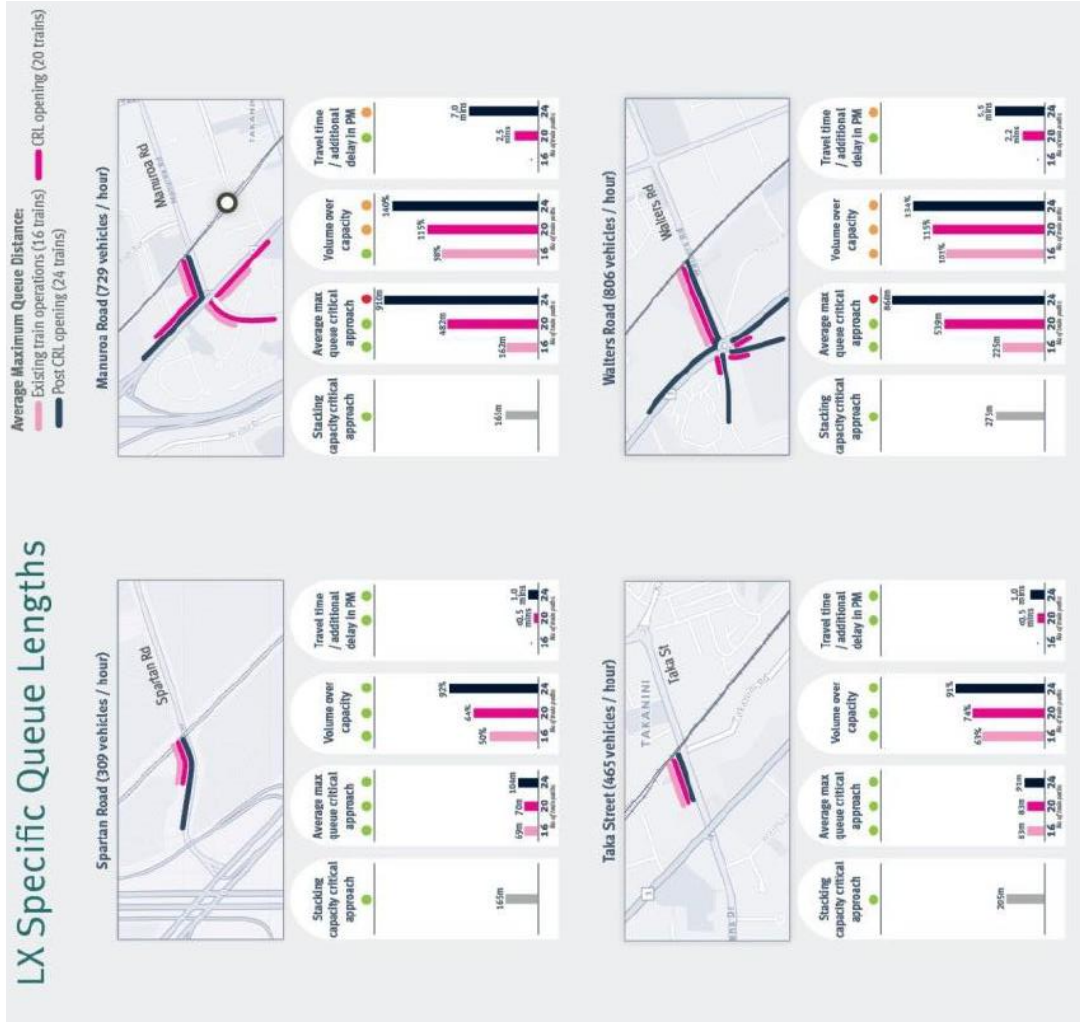
- South FTN is now in the appeals phase of the project.
- Five appeals were received across NoR 1, NoR 3 and NoR 4.
- Only NoR 2 (Drury) will be operative.
- Te Tupu Ngātahi is in the early stages of working through the appeals.
- A south update memo was sent out this month by the Team

More information on the Pukekohe project can be found here [Pukekohe, Paerata and south Drury | Find Out More Supporting Growth NZ](#)



Stages of Network around Takaanini LX

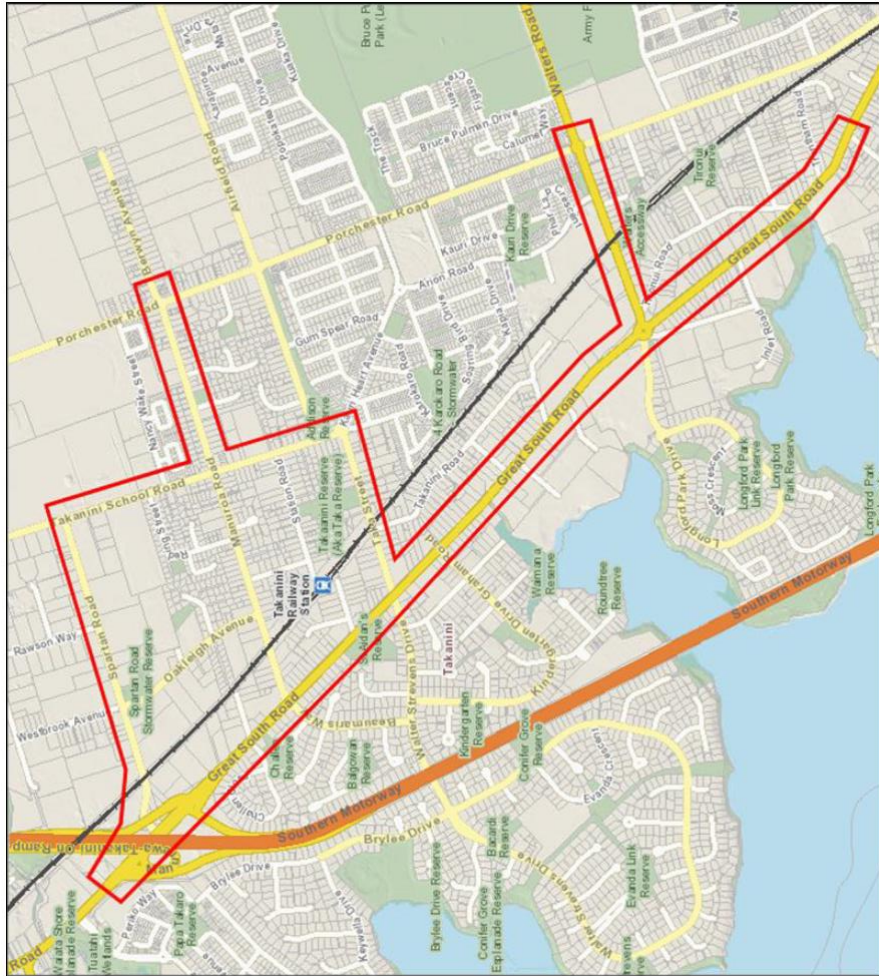




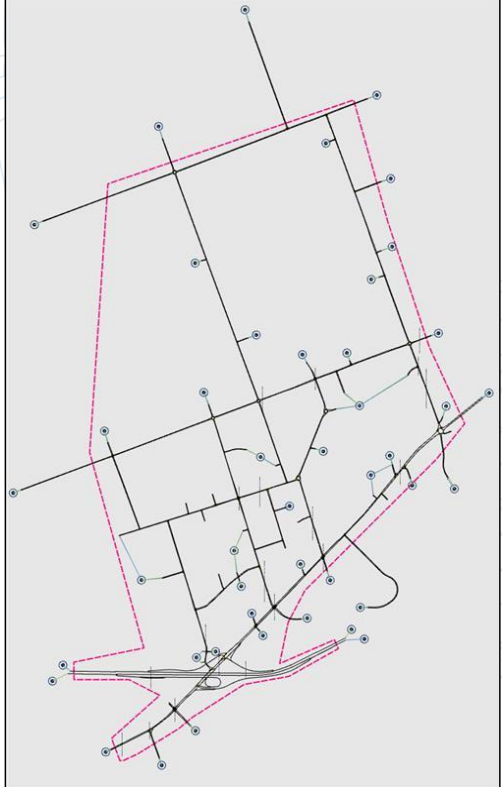
Impact of increased frequency

- 20 trains in place of 16 train movements
- Further increases in train frequencies to 24 per hour on the Southern Line (black on graphic) will not happen until new road bridges are open
- Traffic impacts can be reduced by optimisation of the Great South Road corridor.
- Four intersections on Great South Road are impacted.

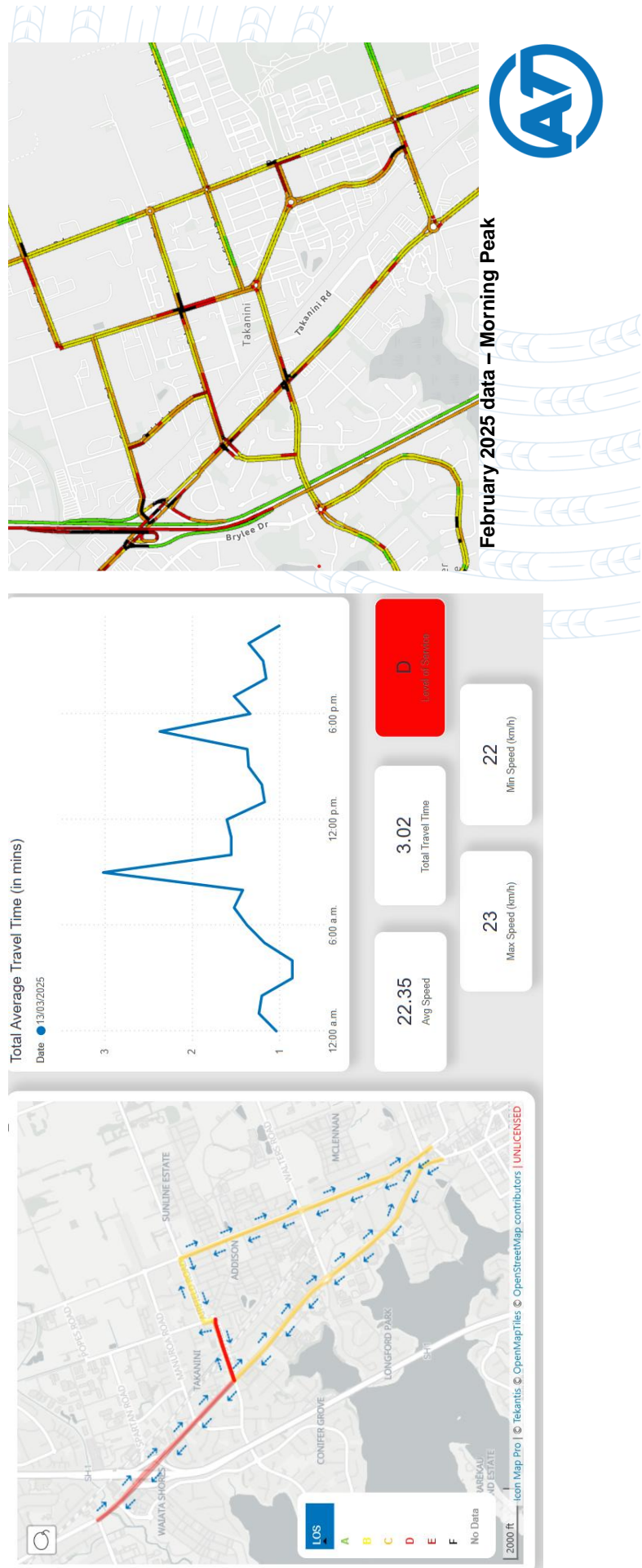
Area under investigation



Traffic will be monitored and simulated for a wider area.



Dashboard – Takaanini LX



February 2025 data – Morning Peak

Item 3

Attachment A

