

Date: Thursday 27 March 2025
Time: 10.00am
Meeting Room: Albert-Eden Local Board Office
Venue: 114 Dominion Road
Mt Eden

Albert-Eden Local Board

OPEN MINUTE ITEM ATTACHMENTS

ITEM	TABLE OF CONTENTS	PAGE
9.4	Public Forum - Dr Rashi Parker, BirdCare Aotearoa	
A.	20250327 Albert-Eden Local Board, Item 9.4: Public Forum - Dr Rashi Parker, BirdCare Aotearoa, Powerpoint Presentation	3
9.6	Public Forum - Public Forum – Fiáin d'Leafy, Bike Auckland, Traffic speed on local roads	
A.	20250327 Albert-Eden Local Board, Item 9.6: Public Forum – Fiáin d'Leafy, Bike Auckland, Traffic speed on local roads, Powerpoint Presentation	11
29.1	Local board feedback on the Land Transport Management (Time of Use Charging) Amendment Bill	
A.	20250327 Albert-Eden Local Board, Item 29.1: Local board feedback on the Land Transport Management (Time of Use Charging) Amendment Bill, Information Memo	23

BirdCaring across Auckland: Rehabilitation of native and endemic taonga at our bird hospital



Auckland Council Local Boards 2025

Dr. Rashi Parker,

support@birdcareaotearoa.org.nz

BirdCare Aotearoa Charity Reg. CC37288

Species-dependent care

On admission to BirdCare Aotearoa, each bird patient receives specialised care.

Following triage, rehabilitation plan includes:

- Medication (O_2 -ventilation, pain relief, antibiotics, anti-inflammatories)
- Heating, to support thermoregulation
- Daily health and behaviour assessments
- Physiotherapy, including cold-laser therapy.
- Species-specific nutrient-enriched feeds.
- Dietary supplements (e.g., B-vitamins for recovery from nerve injuries, Enzyme supplements to support liver health).

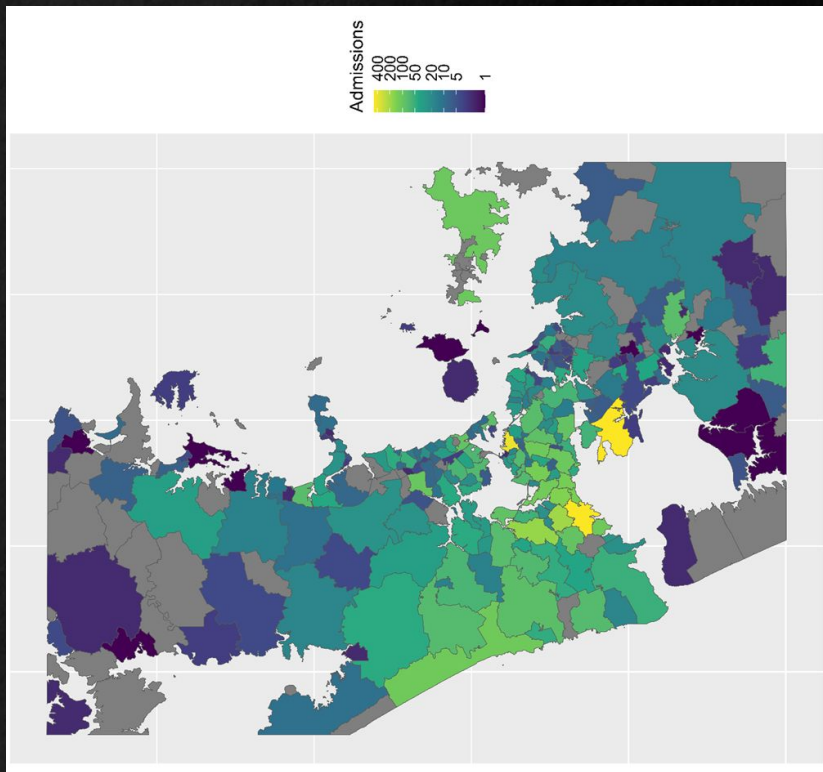


Species identification by beak profile; Triage examination of Kōtare;

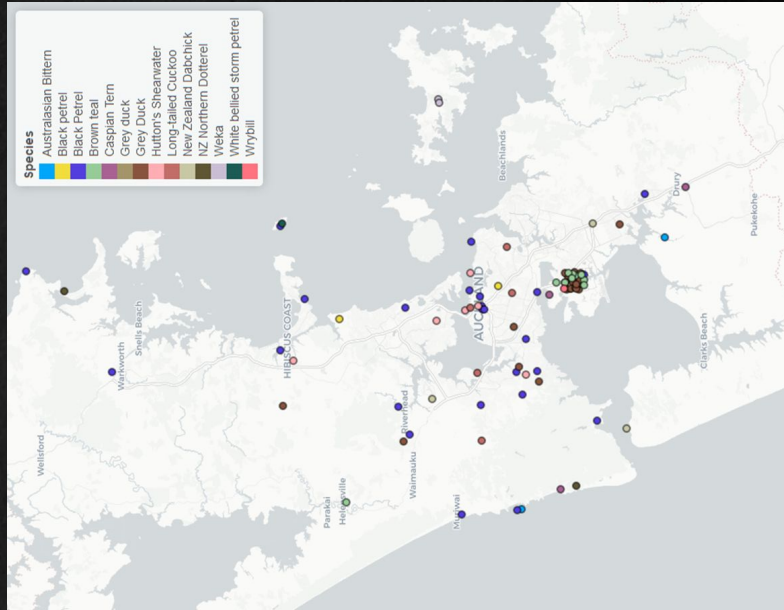
Endemic and Native rescues, across Auckland

Admissions of endemic and native species (protected by DOC under the Wildlife Act Authority), during 2020-2024.

Location of 8576 rescues (from the public, Auckland Council and DOC rangers, vets, wildlife agencies), by recognised suburb. 635 admissions are not included, as their rescue suburb was unknown or vague. 88 different species received expert clinical responses from our team.



DOC Priority 1 Threatened Species



Weiweia NZ Dabchick



Pāteke Brown Teal

