

Date: Tuesday, 1 April 2025
Time: 10.00am
Meeting Room: Room 1, Level 26
Venue: Te Wharau o Tāmaki - Auckland House
135 Albert Street
Auckland

Te Komiti mō te Waeture me te Haumaru / Regulatory and Safety Committee

OPEN MINUTE ITEM ATTACHMENTS

ITEM TABLE OF CONTENTS

PAGE

9	City Centre Community Safety Plan update	
A.	1 April 2025, Regulatory and Safety Committee, Item 9: City Centre Community Safety Plan update - presentation	3

26/03/2025

Item 9

Attachment A



1



2

1

Key priorities progress

1

Together for Tāmaki Makaurau

- **Push to talk system** tested utilising CCTV Operators and patrol staff.
- Police-led discussion (Feb) potential roll out to **the wider security and safety network**, includes security companies, CPNZ, Māori Wardens, AT and council.
- LifeWise opened a **new community base** in Myers Park on 19 February 2025, leased from council.

2

Mental health, alcohol and drug harm prevention, and housing

- The **Local Alcohol Policy** enacted. A toolkit session was conducted with council staff around the practical implications of the policy.

3


Resourcing of NZ Police

- A **new police station** announced, opening a public counter by mid-2025.
- **51 beat positions** in the city centre through operation Safer Streets. This is now business-as-usual resourcing.
- Police **evaluation of the deployment** of Beat Policing teams in Auckland, Wellington, and Christchurch.

4

Community support and outreach

- Investment into the city centre **outreach workers (2 positions) and specialised social worker** at Auckland City mission.
- Redesign of service at central hub to better meet the needs of clients.
- **Manaaki Tangata**, a new well-being space has been activated for homeless tangata.



3

Key priorities progress (cont.)

5

Expansion of CityWatch

- CityWatch replaced by **Community Safety Team**. It now has **18 wardens** dedicated to the city centre supported by CCTR.

6

Audit of and investment in central city lighting

- A **CPTED review** of High Street has been completed and will contribute to the plans for revitalisation.

7


Enhanced CCTV monitoring

- There are **3 CCTV operators** based with Auckland Transport in Fanshawe St.
- They monitor the camera network within the central city, seven days a week.
- They proactively observe hot spots for anti-social behaviour across the city and quickly direct compliance wardens and compliance staff to issues.

8

Night-time economy programme

- Night-time economy **Project Manager has been recruited** through Tātaki Auckland Unlimited

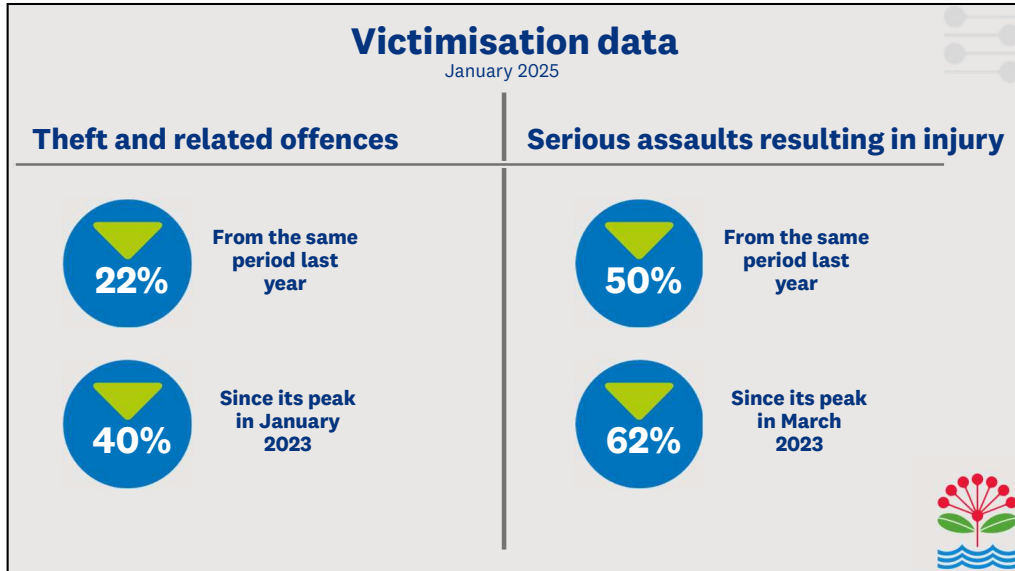


4

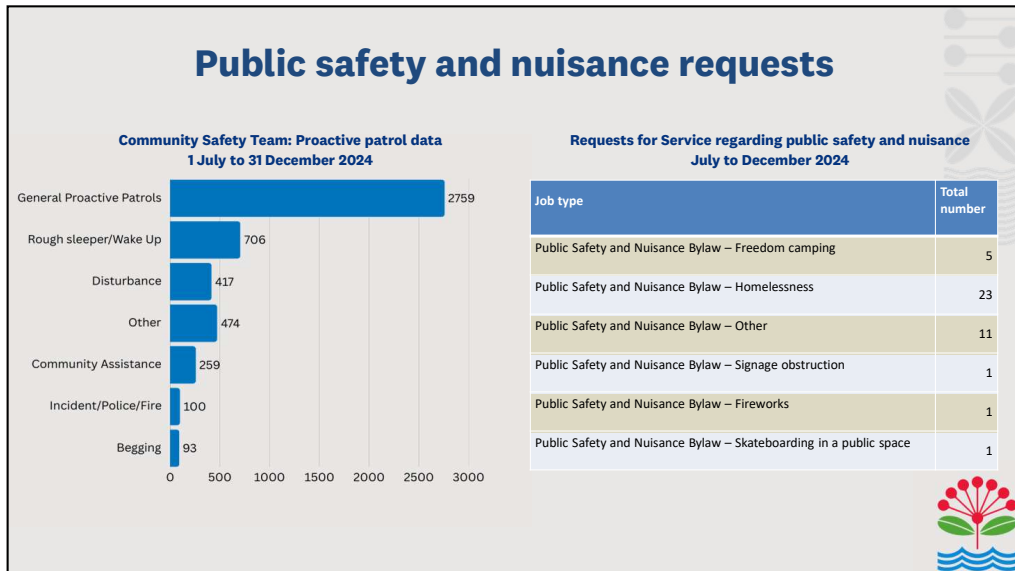
26/03/2025

Item 9

Attachment A



5



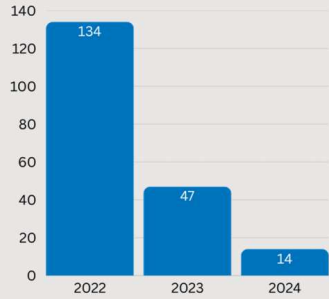
6

3


Ram raid occurrences

- At an all-time high at the end of 2022 - 134 occurrences were recorded in Auckland City.
- Notably decreased to a total of 47 in 2023 and 14 occurrences for 2024.
- From August 2024 to November 2024 no ram raid occurrences were recorded.

Ram raid occurrences recorded in Auckland City 2022 to 2024



Year	Occurrences
2022	134
2023	47
2024	14



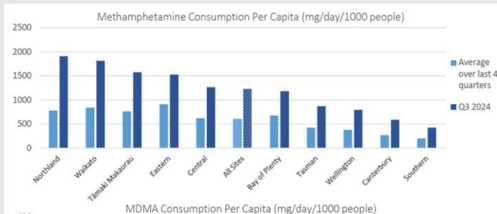
<https://www.police.govt.nz/about-us/publication/retail-crime-and-ram-raids>

7


Drugs in wastewater testing

- Testing for the quarter ending September 2024 shows significant annual increases in all three substances, and a particularly dramatic quarterly increase for methamphetamine.
- Northland and Waikato have the highest consumption, followed closely by Auckland and the Eastern districts.
- Pricing plays a significant role, with Auckland reporting the lowest gram prices for methamphetamine.

Methamphetamine Consumption Per Capita (mg/day/1000 people)



Region	Average over last 4 quarters	Q3 2024
Northland	~1800	~1900
Waikato	~1700	~1800
Tairāhiti Māhorau	~1500	~1600
Eastern	~1400	~1500
Central	~1300	~1400
All Cities	~1200	~1300
Bay of Plenty	~1100	~1200
Tairānui	~1000	~1100
Wellington	~900	~1000
Canterbury	~800	~900
Southern	~700	~800



<https://www.police.govt.nz/about-us/publication/national-drugs-wastewater-testing-programme-quarter-3-2024>

8

26/03/2025

Item 9

Deprivation

- 2023 Census data, a higher percentage of **deprivation level 7 to 9** areas are found in the city centre.
- A total of **41 per cent** of people residing in the city centre are aged **15 – 29 years**, many are students.
- However, people aged **30 to 64 years** represent **46.6 per cent** of the city centre population.
- This means young people or students are not the only group influencing the high deprivation levels in the city centre.

Percentage of population by New Zealand index of socioeconomic deprivation, Auckland City Centre and New Zealand, 2023 Census

Deprivation Level	Auckland City Centre (%)	New Zealand (%)
1 - Least deprived	~0.5	~10.0
2	~3.0	~10.0
3	~1.0	~10.0
4	~6.0	~10.0
5	~8.0	~10.0
6	~9.0	~10.0
7	~18.0	~10.0
8	~22.0	~10.0
9	~21.0	~10.0
10 - Most deprived	~9.0	~10.0

9

Attachment A

Housing deprivation and people experiencing homelessness

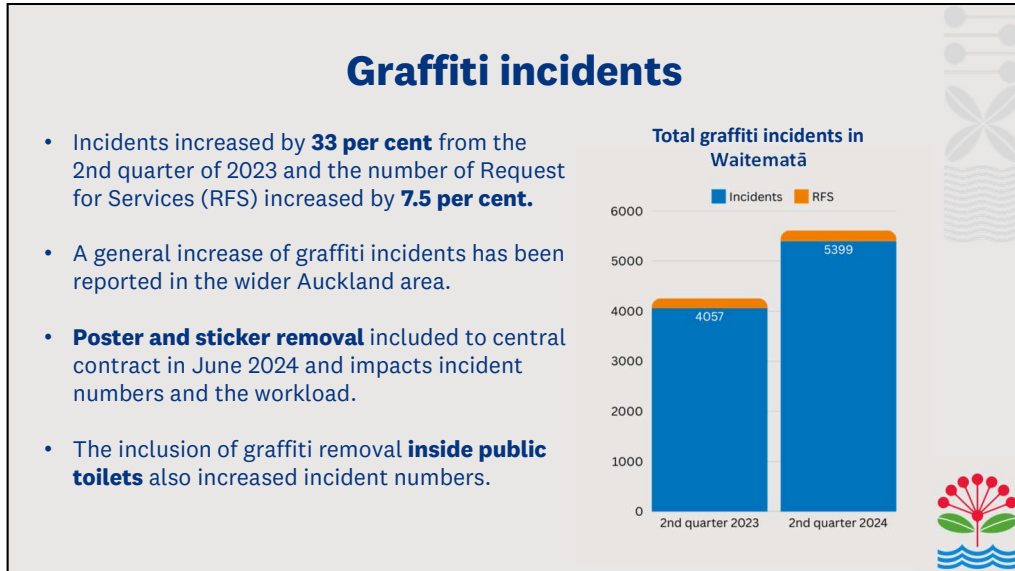
- Homelessness a high wellbeing priority across the region, and safety for vulnerable communities is different from the rest of the population.
- Data from centre outreach teams and compliance, put numbers at 30 – 40 in the city centre. These numbers are fluid and a guideline only.
- Government target to reduce emergency housing by 75 per cent exceeded.
- As of the end of January 2025 there was only one household in emergency housing in the city centre.

Areas	Figures at April 2018	Figures at end of November 2024
Individuals on the public housing wait list in Auckland	3417 (48 per cent of whom are Māori), representing 42 per cent of the national figure	6820 (47 per cent of whom are Māori) – representing 32 per cent of the national figure
Auckland households in transitional housing	901 – representing 42 per cent of the national figure	2799 – representing 44 per cent of the national figure
New applicants in October to the social housing register	Nil data	1857
Applicants on the social housing register nationally	8108	20,834
Applicants on the transfer register	1819	4707

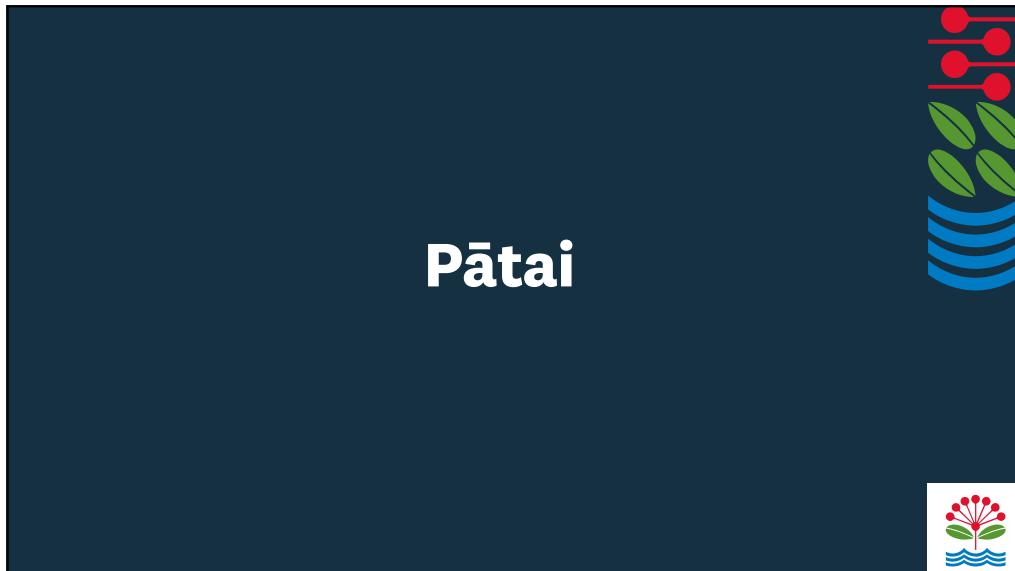
Source: Ministry of Social Development; Ministry of Housing and Urban Development
<https://www.hud.govt.nz/stats-and-insights/the-government-housing-dashboard/public-homes>
<https://www.msd.govt.nz/about-msd-and-our-work/publications-resources/statistics/index.html>

10

5



11



12