

Date: Wednesday 2 April 2025
Time: 10.00am
Meeting Room: Kaipātiki Local Board Office
Venue: 90 Bentley Avenue
 Glenfield

Kaipātiki Local Board Workshop

OPEN ATTACHMENTS

ATTACHMENTS UNDER SEPARATE COVER

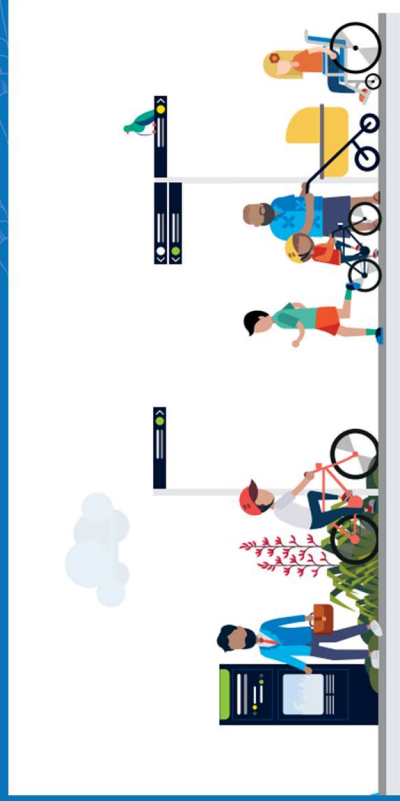
ITEM	TABLE OF CONTENTS	PAGE
3	Kaipātiki Local Board workshop	
B.	AT - Presentation Wayfinding LBTCF	3
C.	AT - Presentation 270 Beach Haven Road Shelter LBTCF	11
D.	AT - Presentation Hinemoa Street LBTCF	17
E.	AT - Beach Haven Road - Alternative Proposed Works	27
F.	CL - Presentation BH Tennis Club and SP Squash Club	37
G.	Site Plan Hinemoa Park_ NCote_Birkenhead Yacht Club Inc	51
H.	Site Plan Shepherds Park - Beach Haven Leisure Centre	53
I.	Memo - Hinemoa Prk - Proposed new lease - NCote - Birkenhead Yacht Club Inc	55
J.	Memo - Shepherds Park - proposed new leases at BHLC	61
K.	Rawene update - KLB 2 April 2025	69
L.	Onepoto update - KLB WS 2 April 2025	83



Wayfinding signage improvements- to enhance walkways

- Kaipātiki LB

20/03/2025



Introduction

Background context

- Request from the Kaipātiki Local Board to extend the street-to-street walkway project to include missed connections and upgrade older signs to the new consistent standards.
- 13 walkways were identified for this project – which were in the Northcote, Birkenhead, Glenfield & Bayfield areas
- Majority are street to street connections, with a handful going through parks & reserves.

"The goal of this project is to implement effective wayfinding signage across key walkways in the Kaipātiki area to improve accessibility, safety, and user experience



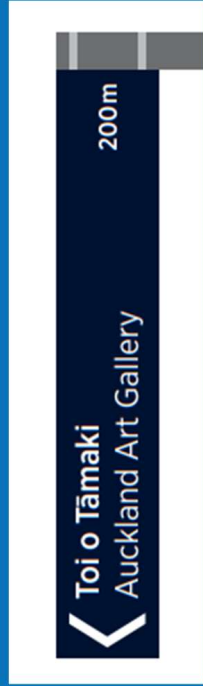
Current challenges

- Difficulty navigating a walkway. (Trees growing along the path & no clear pathway)
- A path going through central government agency land. Is approval required?
- Change in land status from public to private ownership.
- Small budget, cautious of not spending beyond the limit.
- Missed opportunity of not going wider and capturing points of interest, transport hubs & land marks – but would need much more budget.



Proposed signage plan

- Type of signs that could be used- Directional blades



Proposed signage plan

Proposed signage plan for Kaipatiki LB area				
Name of street or location	# pedestrian blades (Double sided)	Mounting - Existing structure	# New poles?	Comments
1 Kauri Glen Road to Tui Glen Road (no walkway signage - via reserve)	2	None		Unsure about condition of the walk through the reserve & some are steep & have stairs?
2 Birkenhead Avenue to City View Terrace (no walkway signage)	2	Yes light pole on City view	1	
3 Fowler Street to Lake Road (old walkway signage)	2	Light poles	0	Tree trimming on Lake Road
4 Holdaway Avenue to James Evans Drive (no walkway signage)	2	Light poles	0	Tree trimming needed at both ends as growing over the light poles.
5 Mokoia Road to Highbury Bypass - east of Kindergarten (no walkway signage - via MOE land)	2	Light poles	0	land owner approval?
6 Kaipatiki Road to Tamahere Drive (old walkway signage)	2	Pole on Kaipatiki	1	Existing sign, may want to update to new signs.
7 Kaipatiki Road to Seaview Road (no walkway signage)	2	Light poles	2	Unsure of the condition through council reserve? There is a gate for vehicles, so could be closed at certain hours?
8 Recreation Drive to Mahara Ave (no walkway signage - shared path via reserve)	3	Light poles & general pole	0	Place a pole in the intersection section of the reserve, with 3 blades for each street
9 Lake Road to Nutsey Ave to Woodside Ave (no walkway signage - via reserve)	9	Light pole on Nutsey Ave	3	
10 Lenihan St to Lake Rd (no walkway signage - via reserve)	2	Pole on Lenihan	1 for Lake RD	
11 Lake Road to Ocean View Road (no walkway signage - this walkway may be private land now part of a development)	NO LONGER A WALKWAY. PRIVATE PROPERTY.			
12 Fowler Street to Woodside Avenue (no walkway signage - via reserve)	2	Light Pole on Fowler	0	
13 Anne McLean Drive to Randal Place (no walkway signage)	2	Light poles	1	Tree trimming maybe needed on Anne McLean Drive?
14 City View Terrace to Pupuke Road (no walkway signage)	2	Light poles	0	
Totals	34		11	

It is proposed in the signage plan that a number of large pedestrian blades (Approximately 34) will be installed in the locations outlined in the signage schedule. The use of the pedestrians blades are considered suitable due to budget, local environment and the suitability of the location.



Key Benefits

- Easier navigation for residents and visitors.
- Promotion of local street connections and nearby parks & reserves.
- Increased safety and accessibility.
- Encourages walking and outdoor activities



Budget & Timeline

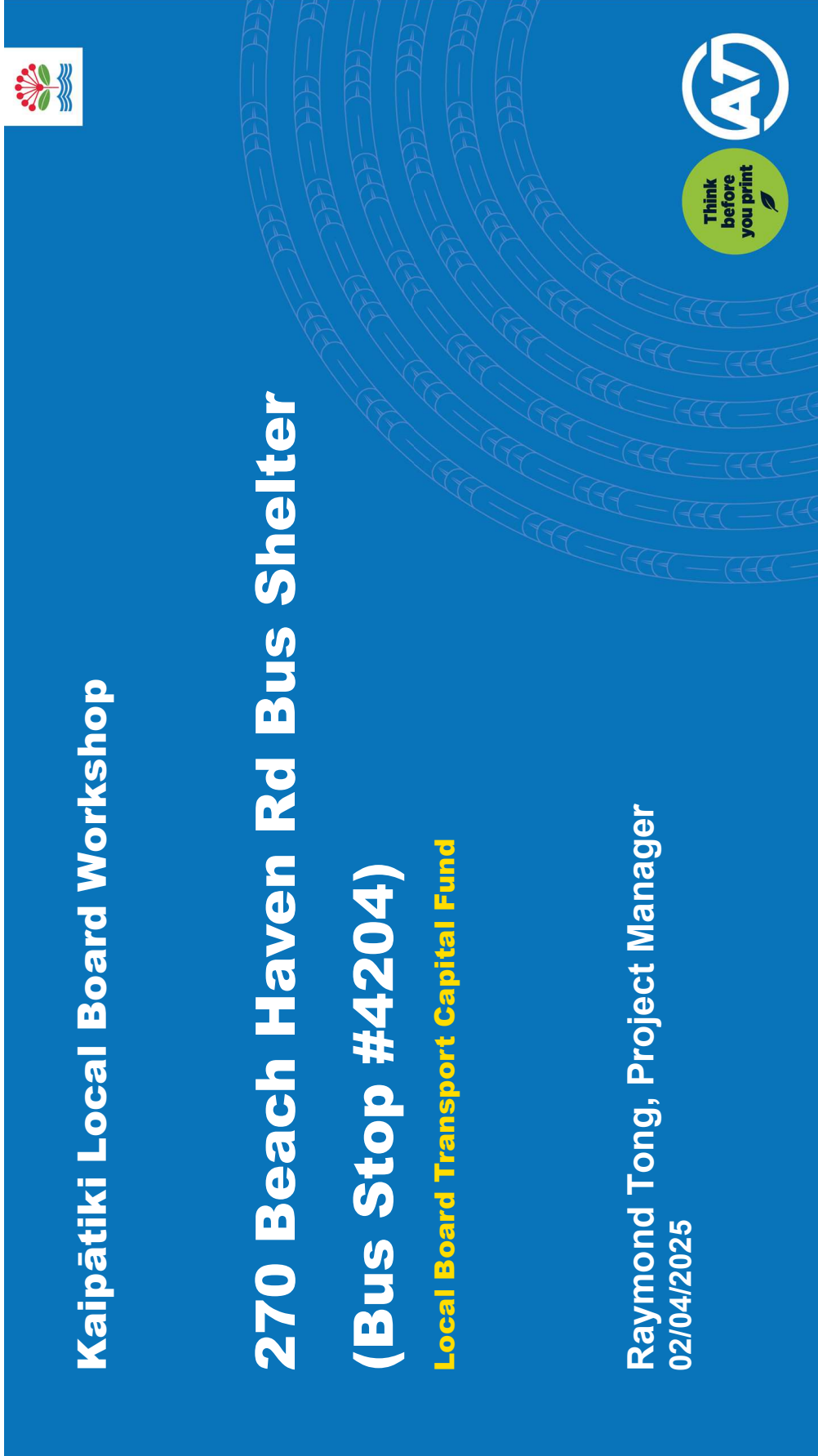
Budget \$20k – covers Creative design, Wayfinding project manager, contractors, manufacturing & installation

Anticipated timeframes:

- Investigation / Design/ Workshop with Kaipātiki LB – March –April 2025
- Final signage schedule/ costings & manufacturing – May –June 2025
- Installation & Final walk over for snags & any adjustments – July –August 2025










Kaipātiki Local Board Workshop

270 Beach Haven Rd Bus Shelter
(Bus Stop #4204)

Local Board Transport Capital Fund

Raymond Tong, Project Manager
02/04/2025





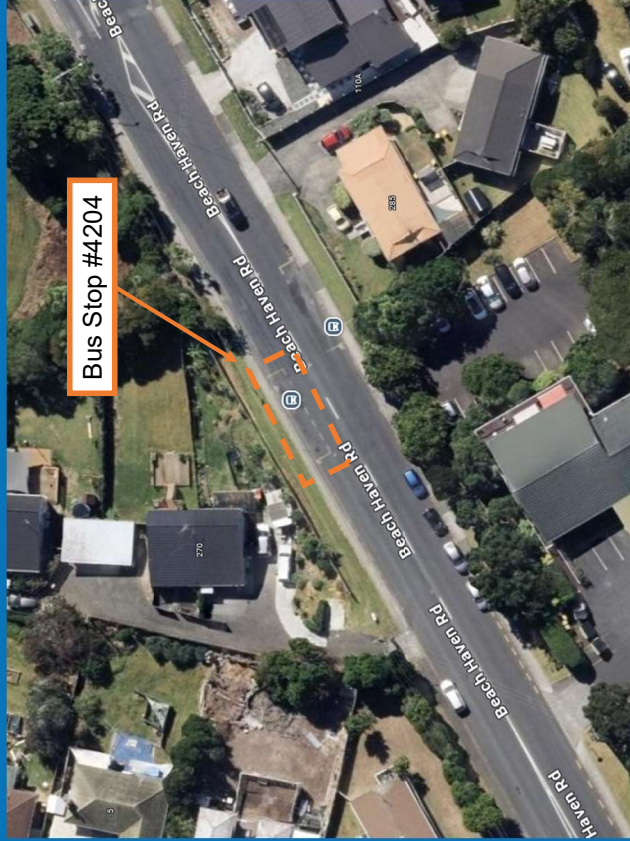
Contents

- 1. Project Origin and Investigation**
- 2. Proposed Improvements & Concept Plan**
- 3. Next Steps**



1. Project Origin & Proposed Improvements

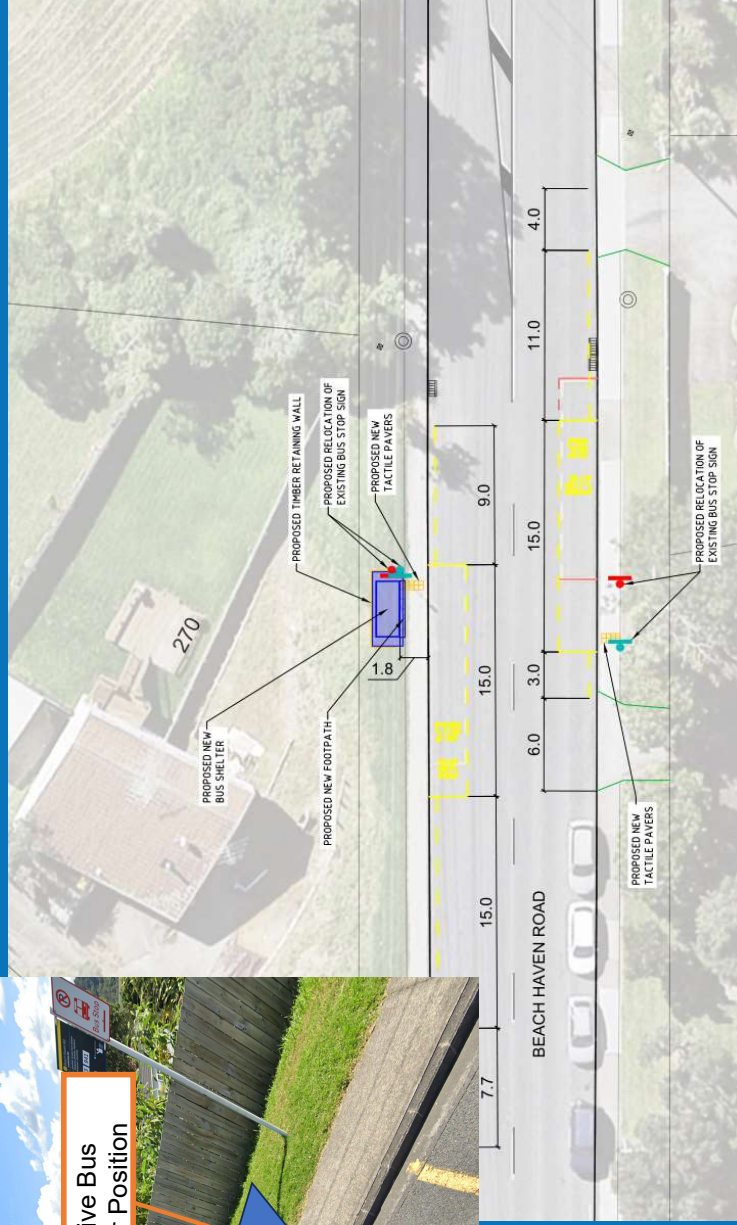
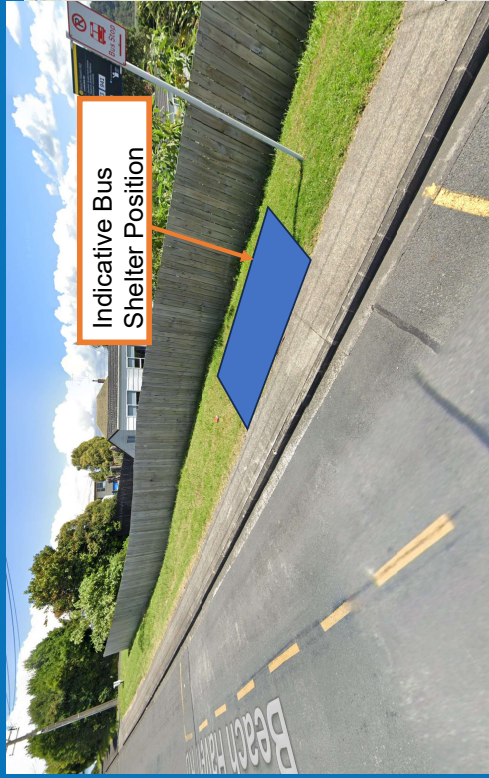
Request for a bus shelter at Bus Stop #4204 was submitted to AT



- Bus Stop serves **4 Routes** including:
 - Route 941 (FTN)
 - Route 073 (School Route)
- **High number of passenger boarding especially children and teenagers**
- Lack of natural cover
- Serves a connecting service
- Missing lead in and lead out



2. Proposed Improvements & Concept Plans



- Install a bus shelter outside #270
- Add lead in & lead out for bus accessibility
- Provide tactile surfaces to improve accessibility



