

**Date:** Wednesday 9 April 2025  
**Time:** 10:10am  
**Meeting Room:** Local Board Chambers  
**Venue:** 35 Coles Crescent  
Papakura  
Auckland

---

## **Papakura Local Board Workshop**

### **OPEN NOTES ITEM ATTACHMENTS**

---

#### **ITEM TABLE OF CONTENTS**

#### **PAGE**

A.	Level Crossing Programme – Takaanini	3
B.	Direction Setting	15





**Level Crossing  
Programme - Takaanini**

Papakura Local Board

Think before you print

A7

## Purpose

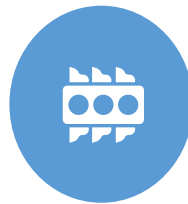
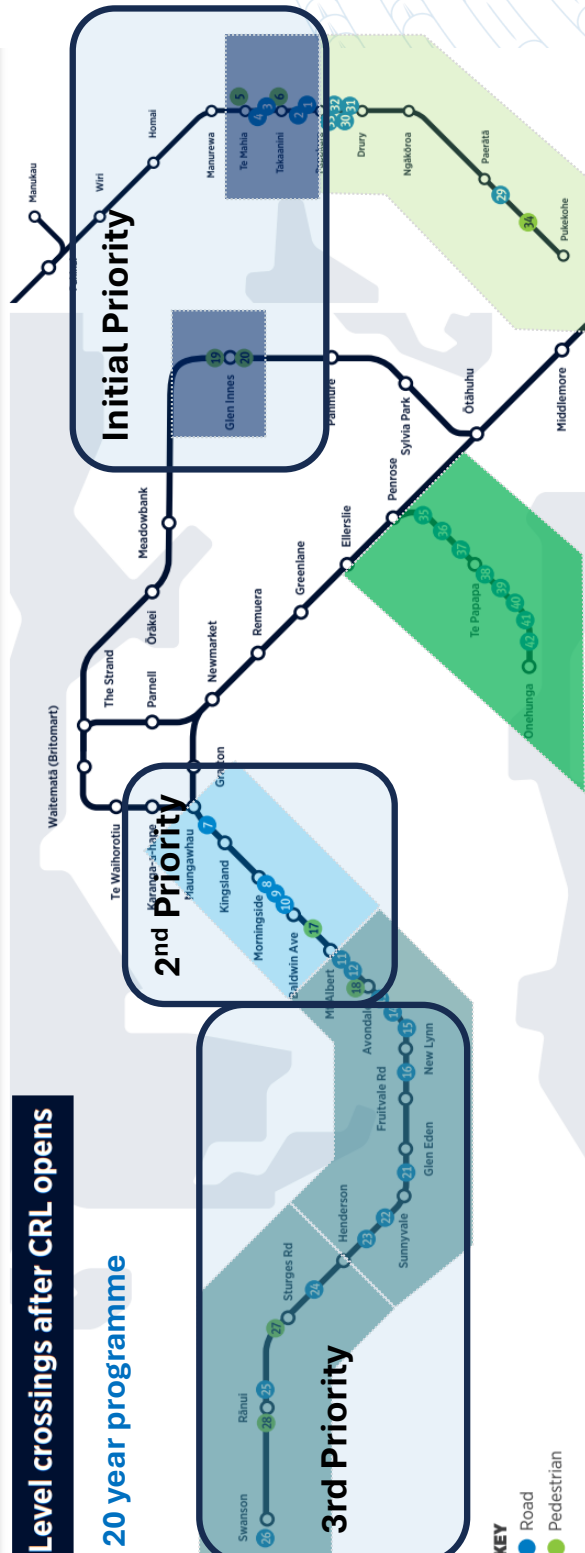
- Update on the Level Crossing Programme
- Seek local board feedback on the proposed option for the Takaanini footbridge
- Provide the Local Board with a progress update on the footbridge at Takaanini and next steps for engagement



# Level Crossings on Metro network

## Level crossings after CRL opens

### 20 year programme



Enhance Auckland's productivity by improving road network capacity, resilience and journey times for all traffic

Enable the rail network to maximise its operational efficiency and capacity

Improve safety for all users of the transport network

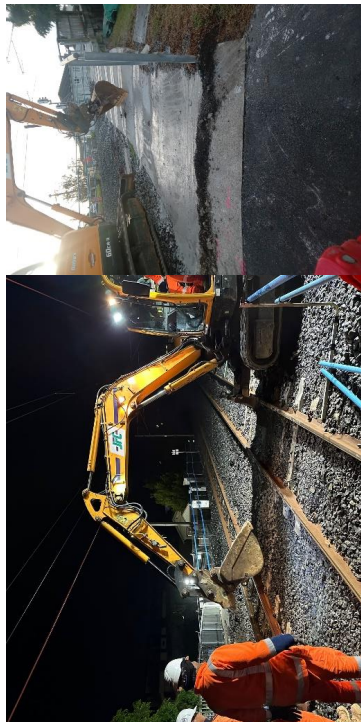
Enhance urban realm and reduce negative effects on accessibility from level crossing closures

- 1. Takaanini
- 1. Stations
- 2. Inner West
- 3. Mid West
- 3. Outer West
- 4. Outer South
- 5. Onehunga



# AI has been progressing level crossing removals ahead of CRL

Closure of Lloyd Avenue – Complete

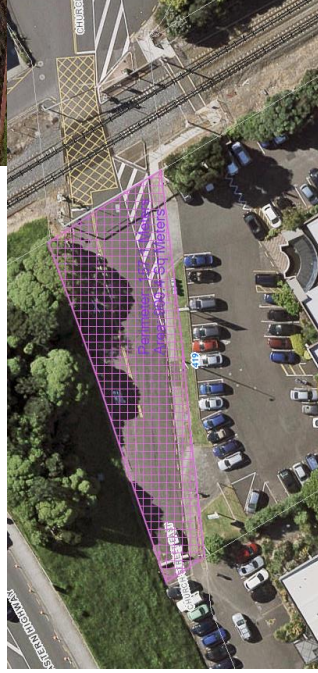


Tomai Station – Complete



Over 70% of the road/rail crossings on the Auckland Rail Network have

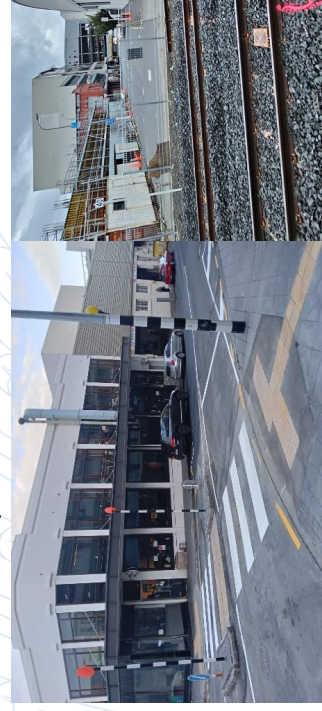
Church Street east – Planned FY 25



Closure of Ironui Station Road east – Complete  
Closure of Corban Estate – Complete

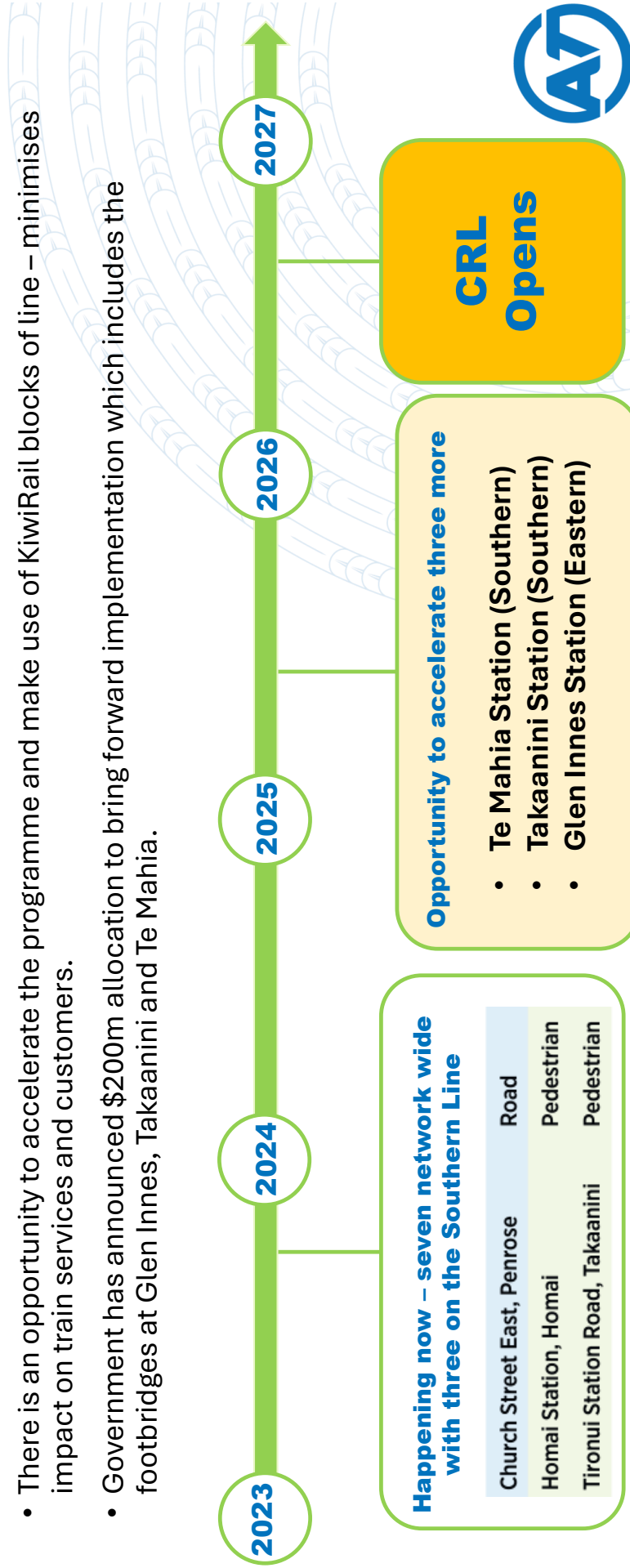


Closure of Kingdon Street – Alternative route to Davies Crescent complete



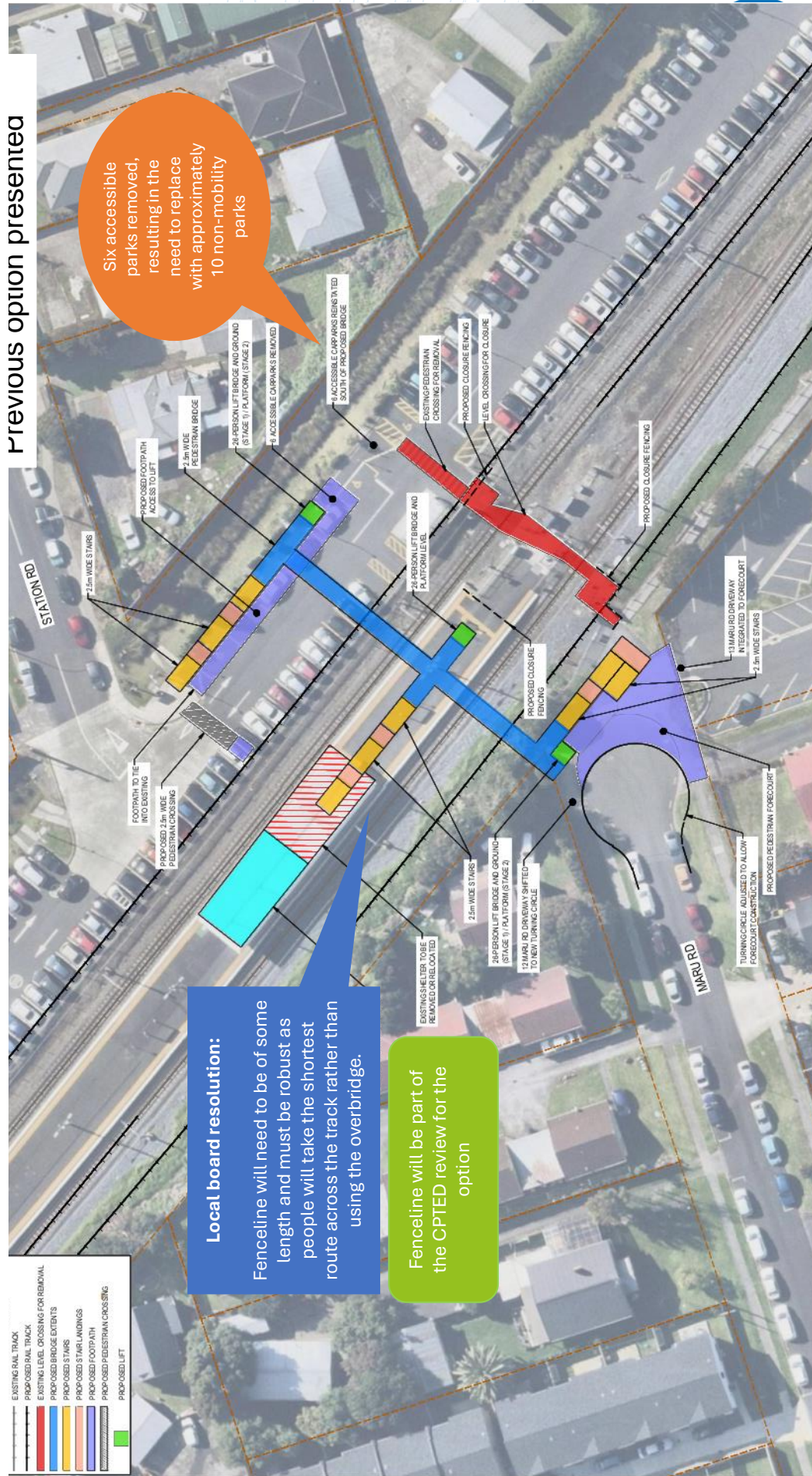
## WHAT NOW?

- The Southern Line will see services increasing from 16 to 20 trains per hour during peak times with patronage forecast to increase post CRL opening.
- The Level Crossing Programme has identified the opportunity to provide safer access with the closure of 3 further crossings prior to the opening of CRL.
- There is an opportunity to accelerate the programme and make use of KiwiRail blocks of line – minimises impact on train services and customers.
- Government has announced \$200m allocation to bring forward implementation which includes the footbridges at Glen Innes, Takaanini and Te Mahia.



Item 3

Attachment A



Previous option presented

Six accessible parks removed, resulting in the need to replace with approximately 10 non-mobility parks

**Local board resolution:**  
Fenceline will need to be of some length and must be robust as people will take the shortest route across the track rather than using the overbridge.

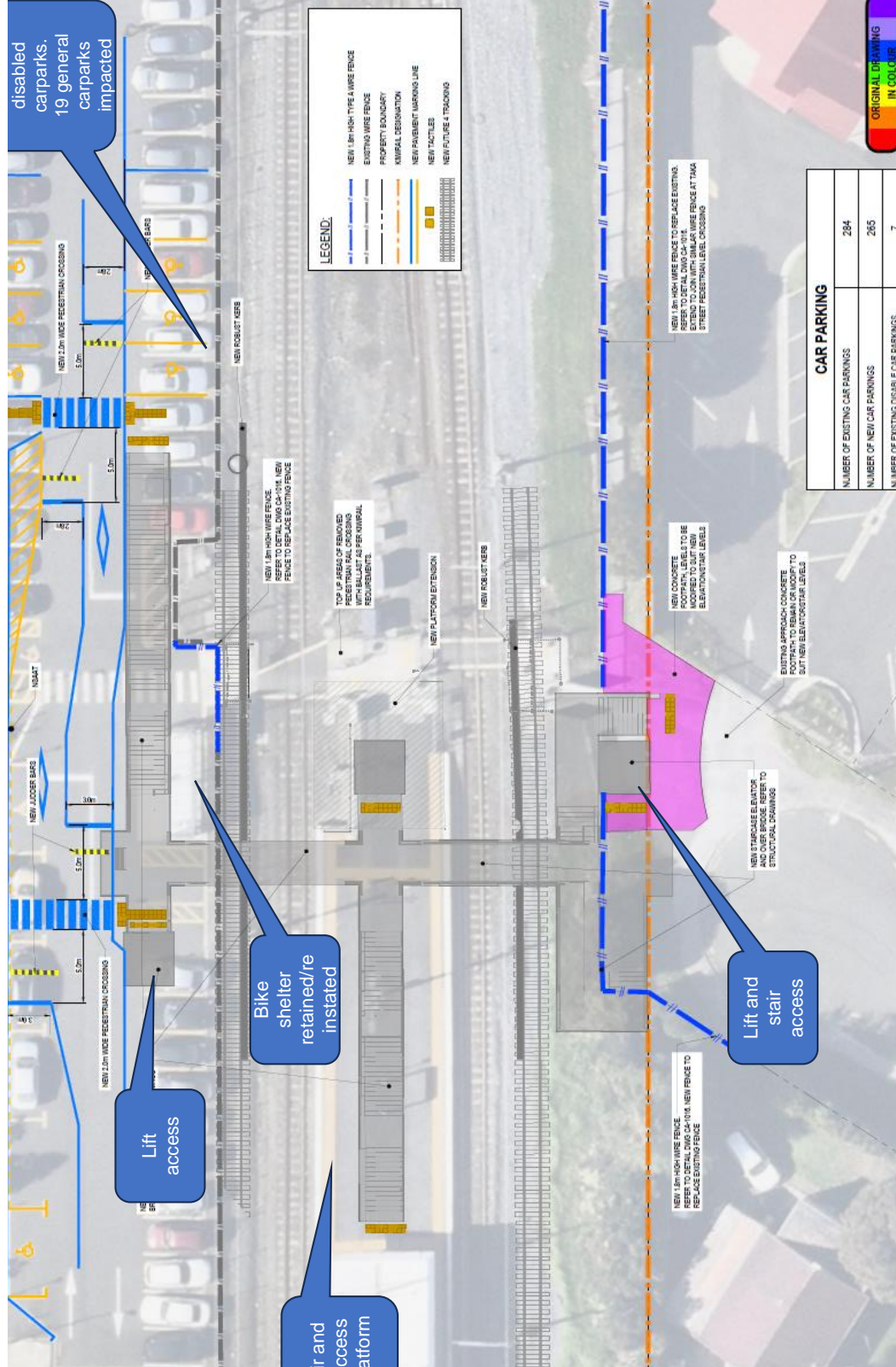
Fenceline will be part of the CPTED review for the option



# Option 1

Placement and arrangement of assets on the platform largely fixed due to existing constraints and clearance requirements

Option allows future proofing of the station with the ability to accommodate future 3<sup>rd</sup> and 4<sup>th</sup> line



Attachment A  
Item 3



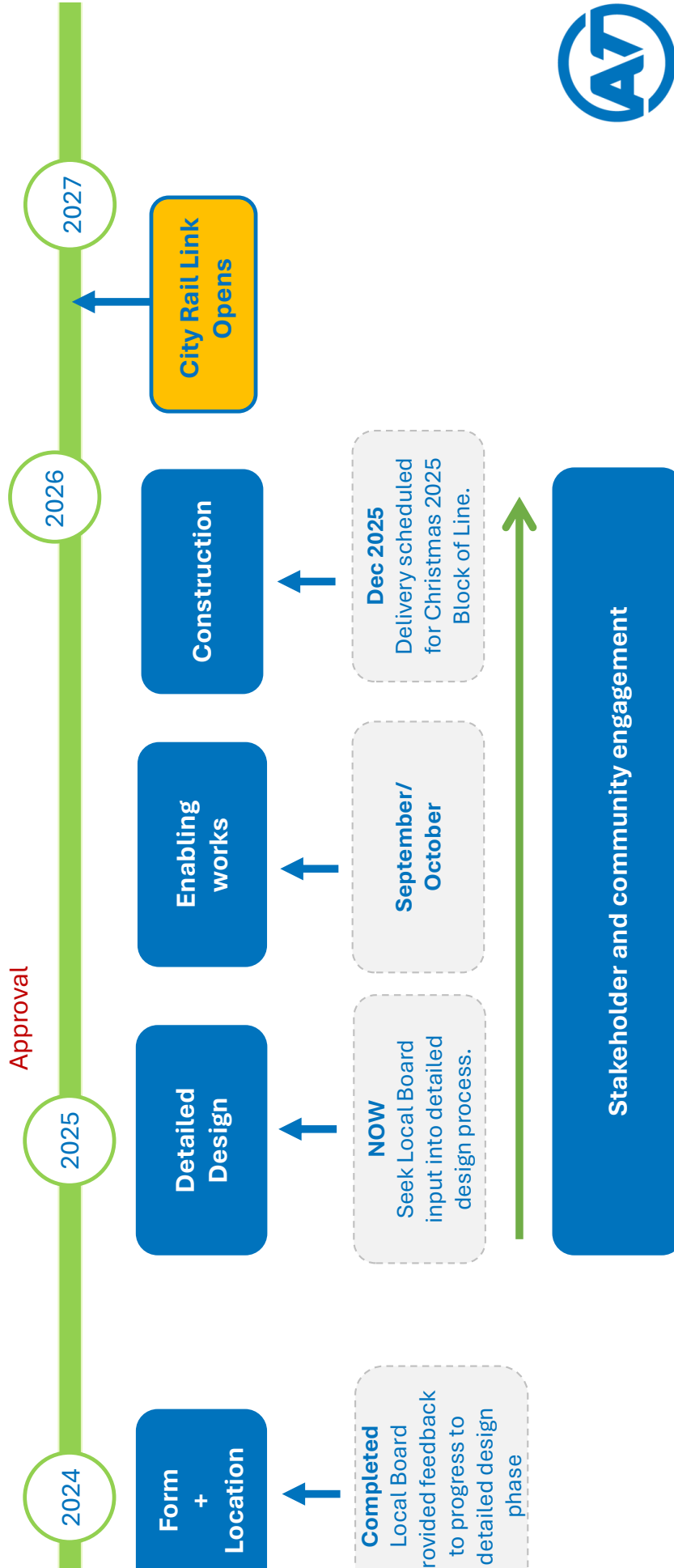
Feedback sought on arrangement on roadside, urban elements, footpath connections, landscaping, artwork, lift façade, active mode infrastructure.

## Stakeholder and Community Engagement approach

- **Feedback from mana whenua, elected members and partners** about the design, specific location and construction impacts to ensure successful delivery of the programme.
- **Targeted engagement with neighbouring properties/businesses** to understand their views on the design (specifically location) and how we can mitigate construction or other impacts.
- Seek **wider community feedback on defined elements of design** :
  - Drop in sessions
  - Community activations/events
  - Seek support from Local Board with engagement within the community

# Timing and Delivery

AT Board Approval





## Next steps

- Carry out road safety audit
- CPTED reports
- Provide local board with the options assessment
- Begin engagement with stakeholders and the community

Item 3

Attachment A





# Direction Setting – 9 April 2025



## Papakura Māori Wardens and car seat installation project

- Papakura Māori Wardens support at Citizenship Ceremonies no longer required
- Civic Events have contracted a professional security firm
- Collaboration with Auckland Transport Te Ara Haepapa car seat education and resources project
- Costs have increased.
- Car seats still able to be purchased
- Extension straps, locking clips, anchor bolts, some seats require installation by mechanic
- Have discussed applying for other funding sources to make up the shortfalls, ie:
  - Transpower Community Care Fund for new uniforms
  - SkyCity Community Trust for rangatahi warden leadership programmes
  - Van – Wiri Licensing Trust - when the van needs replacing







## Response to Mr Archibald

- Review and direction



Item 3

Attachment B

## 2025/2026 Infrastructure and Environmental Services

- Vic will speak to this



## Autism Run update

- Park Run have decided to cancel their run for 12 April 2025
- Bruce Pulman Park is no longer a option as it isn't available
- A bus/shuttle is currently being discussed to mitigate congestion in the area
- Staggered starts for participants is being implemented.



## **Pulman Lodge Lease on McLennan Park update**

- The reclassification to regularise the occupancy of Pulman Lodge on McLennan Park is being considered as part of the Papakura Local Parks Management Plan
- Following the classification, the lease for the additional premises can be progressed.
- To ensure continuity staff have made provision for the lease in the 2025/2026 leasing work programme.



## Time of use charging bill feedback

- Council's [draft submission](#) circulated Friday 4 Apr 2025, 3:56pm
- [Elected member briefing held 24 March 2025](#)
- Local board gave initial views on time of use charging at 23 Oct 2024 business meeting (see separate attachment)
- Local board feedback required by 4pm Tues 22 April 2025 – will need to be an urgent decision
- Submission period closes Sunday 27 April 2025
- Do you have any points that are different to the Governing Body's submission?
- Do you support the Governing Body's submission?





## Time of Use Charging – ideas

- Views on governance process for allocation of revenue from toll charges
- South Auckland area should be a priority for a large slice of “time of use charging” revenue to fund the infrastructure required to manage growth
- Thoughts on location of toll booths
- Any thoughts about exemptions:
  - whether freight trucks are exempt until a certain distance out from the CBD
  - parents travelling through multiple zones for child drop off / pick ups
  - parents travelling through multiple zones as child is attending special needs school
- Requirement for third and fourth rail line for efficiencies for freight

# WORKSHOP – 16 April 2025

Time	Topic	Purpose	Proposed outcome
10-11am (60mins)	Pukekiwiriki Paa Joint Management Committee <b>(mana whenua only)</b>	Define partnership opportunities	
11-11.30am (30mins)	Pukekiwiriki Paa Joint Management Committee (workshop)	Define partnership opportunities	
11.30-12pm (30mins)	Pukekiwiriki Paa Joint Management Committee business meeting expected reports: <ul style="list-style-type: none"> <li>• Operations Update</li> <li>• Partial Review of the Reserve Management Plan</li> <li>• Pukekōiwiriki Paa - Matariki Dawn Event</li> </ul>	Formal approval	



## WORKSHOP – 16 April 2025 continued

Time	Topic	Purpose	Proposed outcome
12-12.30pm (30mins)	Lunch Break		
12.30pm- 2.30pm (120mins)	Local Grant Round Two - Papakura Local Board	Review community grant applications	To review the 2024/2025 Local Grant Round 2 applications.
2.30-2.40pm (10mins)	Break		
2.40-3.10pm (30mins)	Update on two crossing projects on Clevedon Road	Define board position and feedback	To provide an update on two crossing project on Clevedon Road and seek direction from the board on options.





## WORKSHOP – 16 April 2025 continued

Time	Topic	Purpose	Proposed outcome
3.10-4.10pm (60mins) last item of the day	Direction Setting	Provide direction on preferred approach	To inform the board on upcoming events/meetings and seek board's feedback.  For members to provide strategic updates related to meetings/ briefings they have attended, highlighting opportunities for board decision making or advocacy.





Item 3

Attachment B

## Reminder upcoming events

Sat 12 April 2025, 10am – 2pm – EcoFest fun day, Botanic Gardens



## Updates from members

For members to provide strategic updates related to meetings/ briefings they have attended, highlighting opportunities for board decision making or advocacy.