

Date: Tuesday 15 April 2025
Time: 10:00am
Venue: Ground Floor
Hawiti Building
6 - 8 Munroe Lane
Albany

Hibiscus and Bays Local Board Workshop

OPEN AGENDA

MEMBERSHIP

Chairperson	Alexis Poppelbaum, JP	
Deputy Chairperson	Gary Brown	
Members	Jake Law	Apologies
	Sam Mills, JP	
	Julia Parfitt, JP	
	Victoria Short	
	Gregg Walden	
	Leanne Willis	Apologies

Will Wilkinson
Democracy Advisor

15 April 2025

Contact Telephone: 0277760786
Email: will.wilkinson@aucklandcouncil.govt.nz
Website: www.aucklandcouncil.govt.nz

This workshop will be held in-person and via Microsoft Teams. Email hibiscusandbayslocalboard@aucklandcouncil.govt.nz for a link to join the workshop online.

ITEM	TABLE OF CONTENTS	PAGE
1	Ngā Tamōtanga Apologies	2
2	Te Whakapuaki i te Whai Pānga Declaration of Interest	2
3	Local board workshop	3

1 Ngā Tamōtanga | Apologies

Apologies from Members J Law and L Willis for absence.

2 Te Whakapuaki i te Whai Pānga | Declaration of Interest

Members are reminded of the need to be vigilant to stand aside from decision making when a conflict arises between their role as a member and any private or other external interest they might have.

Local board workshop

File No.: CP2025/06906

- Note 1: This workshop has been called by the chairperson in consultation with the staff.
- Note 2: No working party/workshop may reach any decision or adopt any resolution unless specifically delegated to do so.

Te take mō te pūrongo Purpose of the report

1. To present the Hibiscus and Bays Local Board workshop agenda for Tuesday 15 April 2025.

Whakarāpopototanga matua Executive summary

2. Most workshops are open to the public to attend as observers in person or online.
3. Some sessions may not be open to the public. The chairperson and deputy chairperson decide which sessions are open to the public, depending on the sensitivity of the information being discussed. If a session is not open, a reason will be provided below.
4. The public can observe the workshop via MS Teams.
Email hibiscusandbayslocalboard@aucklandcouncil.govt.nz for a link to join the workshop online.
5. Local board workshops provide an opportunity for local boards to carry out their governance role in the following areas:
 - a) Accountability to the public
 - b) Engagement
 - c) Input to regional decision-making
 - d) Keeping informed
 - e) Local initiative / preparing for specific decisions
 - f) Oversight and monitoring
 - g) Setting direction / priorities / budget.
6. Workshops do not have decision-making authority.
7. Workshops are used to canvass issues, prepare local board members for upcoming decisions and to enable discussion between elected members and staff.
8. Members are respectfully reminded of their Code of Conduct obligations with respect to conflicts of interest and confidentiality.

The following will be covered in the workshop:

Note: At this point in proceedings, the workshop will close to the public.

Session 1 – 10.00am (NON-PUBLIC)

Youth Centre update

At this point in proceedings, the workshop will be open to the public.

Session 2 – 11.00am

2025/2026 Hibiscus and Bays Grants Programme Review

Presenter: Vincent Marshall – Grants Advisor
 Governance role: Keeping informed
 Proposed Outcome: Receive a review of the Hibiscus and Bays Local Board Grants Programme 2025/2026
 Attachment: Attachment B – Presentation: Review of Hibiscus and Bays Local Board Grants Programme 2025/2026

Session 3 – 11.30am

AT update: Special Vehicle Lane on Hibiscus Coast Highway, Silverdale

Presenter: Beth Houlbrooke – Elected Member Relationship Partner (North)
 Governance role: Keeping informed
 Proposed Outcome: Receive an update on the Hibiscus Coast Highway Special Vehicle Lane project
 Attachment: Attachment C – Presentation: Hibiscus Coast Highway Special Vehicle Lane

12.00pm – BREAK

Session 4 – 12.30pm

Army Bay Wastewater Treatment Plant - Capacity Update

Presenters: Ben Halliwell – Elected Member Relationship Manager
 Andrew Deuschie – Andrew Deuschie
 Governance role: Keeping informed
 Proposed Outcome: Receive an update on Army Bay Wastewater Treatment Plant Capacity
 Attachment: Attachment D – Memo: Hibiscus Coast wastewater capacity constraints

Ngā tāpirihanga Attachments

No.	Title	Page
A	NON-PUBLIC placeholder	9
B	Presentation: Review of Hibiscus and Bays Local Board Grants Programme 2025-2026	11
C	Presentation: Hibiscus Coast Highway Special Vehicle Lane	31
D	Memo: Hibiscus Coast wastewater capacity constraints	47

Session 1 – NON-PUBLIC Attachment A Placeholder

Item 3

Attachment A

Review of Hibiscus and Bays Local Board Grants Programme 2025/2026

Vincent Marshall
Grants Advisor



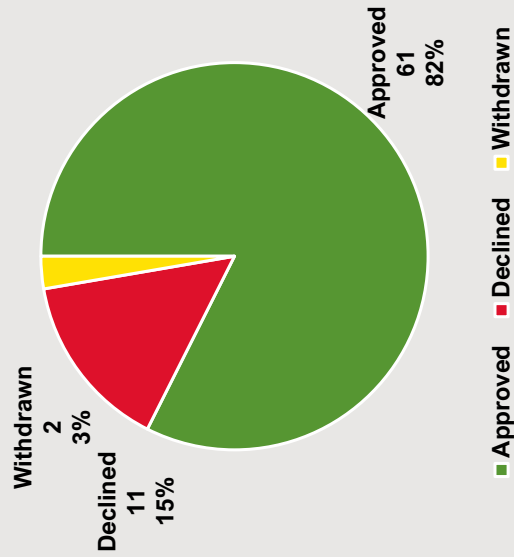


Purpose

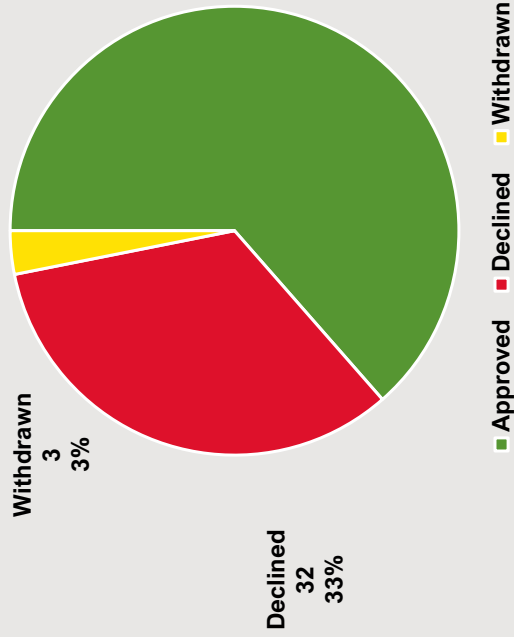
- Snapshot of **2023/2024 Community Grants**
- Review the **2025/2026 Grant Programme**
 - Outcomes, priorities, and exclusions
 - Grants budget
 - Declined reasons
 - Facilities Grant
 - Rates Grant
 - Proposed dates

Grant application outcomes: 2022/23 vs 2023/24

2022/2023 application outcomes



2023/2024 application outcomes

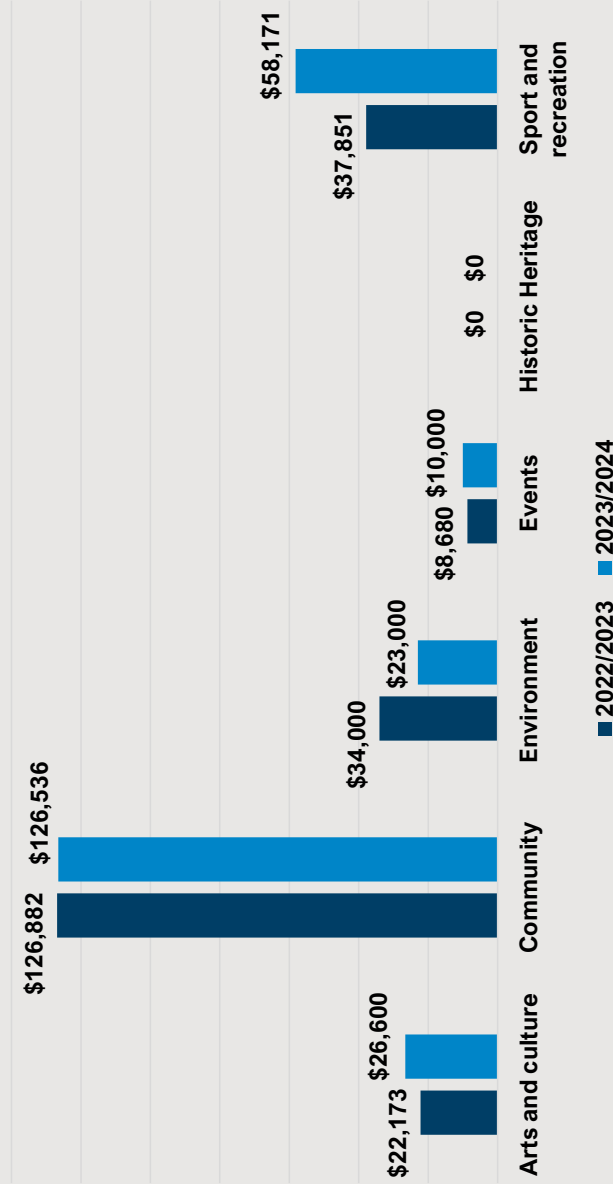


- 74 applications in 22/23 vs 96 applications in 23/24 FY



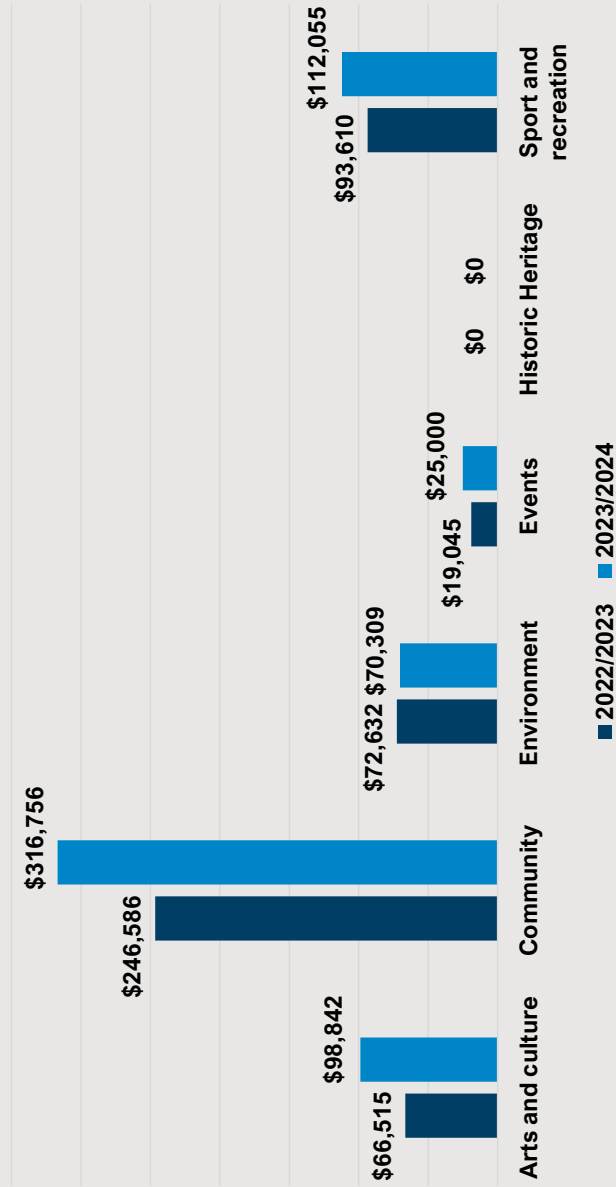


Grants spending by project focus FY 22/23 vs FY 23/24



- Total spending of \$229,586 in 22/23 FY and \$244,306 spending in 23/24FY
- No historic heritage applications made or approved in 22/23 or 23/24 FY

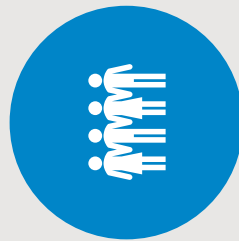
Grants requests by project focus FY 22/23 vs FY 23/24



- Total request of \$498,388 in 22/23 FY, total request of \$622,961 in 23/24 FY



Local Board Outcomes and Priorities



OUR COMMUNITY VOICE IS HEARD, AND ALL FEEL WELCOMED. OUR RESILIENCE NETWORKS ENABLE US TO BE PREPARED FOR EMERGENCIES, WHILE OUR YOUTH THRIVE



NATIVE BIRDS, PLANTS AND ANIMALS THRIVE IN AN ENVIRONMENT WHERE PESTS ARE ELIMINATED. WE HAVE PLANNED AND DESIGNED OUR COASTLINES TO BE RESILIENT TO STORMS AND THE EFFECTS OF CLIMATE CHANGE. OUR WATERWAYS ARE CLEAN, AND WE MINIMISE WASTE AS WE MOVE TO A CIRCULAR ECONOMY



IN A WORD, VIBRANT. OUR PAST IS REMEMBERED, AND OUR FACILITIES CATER FOR FUTURE NEEDS. OUR OPEN SPACES CAN BE USED BY ALL, AND WE HAVE AN ABUNDANCE OF RECREATION FACILITIES



OUR TOWN CENTRES ARE LIVELY AND FULL OF INTEREST, WITH A NETWORK OF PATHS AND CYCLEWAYS THAT ARE AS EQUALLY CONNECTED AS OUR CURRENT ROADING NETWORK, ALL SERVING TO CREATE A SAFE, BUSY, AND PLEASANT NEIGHBOURHOODS



Local Board Outcomes and Priorities

OUR PEOPLE // OUR COMMUNITY VOICE IS HEARD, AND ALL FEEL WELCOMED. OUR RESILIENCE. NETWORKS ENABLE US TO BE PREPARED FOR EMERGENCIES, WHILE OUR YOUTH THRIVE.

- Hibiscus and Bays: a community of thousands that feels like a village, with strong connections and roots, but easy opportunities for participation

OUR ENVIRONMENT // NATIVE BIRDS, PLANTS AND ANIMALS THRIVE IN AN ENVIRONMENT WHERE PESTS ARE ELIMINATED. WE HAVE PLANNED AND DESIGNED OUR COASTLINES TO BE RESILIENT TO STORMS AND THE EFFECTS OF CLIMATE CHANGE, OUR WATERWAYS ARE CLEAN, AND WE MINIMISE WASTE AS WE MOVE TO A CIRCULAR ECONOMY

- Hibiscus and Bays: where native birds and plants flourish, and the water is pure and clean through education, advocacy and restoration work
- Supporting our communities by planning and engagement on how to mitigate and manage risks from climate change

OUR COMMUNITY // IN A WORD, VIBRANT. OUR PAST IS REMEMBERED, AND OUR FACILITIES CATER FOR FUTURE NEEDS. OUR OPEN SPACES CAN BE USED BY ALL, AND WE HAVE AN ABUNDANCE OF RECREATION FACILITIES

- EVERY CORNER OF THE HIBISCUS AND BAYS HAS A PAST THAT WE REMEMBER THROUGH THE NAMES GIVEN TO PLACES AND THE STORIES SHARED
- THERE IS NOWHERE BETTER THAN OUR LOCAL PARKS AND RESERVES FOR A PICNIC, A SPORTS GAME OR MEETING FRIENDS
- WE HAVE MORE OPPORTUNITIES FOR RECREATION IN OUR COMMUNITY THAN EVER BEFORE
- A VIBRANT AND THRIVING COMMUNITY WITH PLACES TO CELEBRATE, LEARN AND ENJOY CULTURE AND ARTS



Local Board Outcomes and Priorities - continued

OUR PLACES AND OUR ECONOMY // OUR TOWN CENTRES ARE LIVELY AND FULL OF INTEREST, WITH A NETWORK OF PATHS AND CYCLEWAYS THAT ARE AS EQUALLY CONNECTED AS OUR CURRENT ROADING NETWORK, ALL SERVING TO CREATE A SAFE, BUSY, AND PLEASANT NEIGHBOURHOODS. HIBISCUS AND BAYS: A COMMUNITY OF THOUSANDS THAT FEELS LIKE A VILLAGE, WITH STRONG CONNECTIONS AND ROOTS, BUT EASY OPPORTUNITIES FOR PARTICIPATION

- TOWN CENTRES FEEL LIKE A FRIENDLY VILLAGE BUT OPERATE LIKE A BUSTLING METROPOLIS
- GETTING AROUND WITHOUT A CAR IS ATTRACTIVE BECAUSE OF THE SEAMLESS AND SAFE NETWORK OF PATHS AND PUBLIC TRANSPORT
- PEOPLE EMBRACE AND ENJOY LIVING, WORKING, PLAYING, AND TRAVELLING LOCALLY





Important Advice for Applicants

The Hibiscus and Bays Local Board are seeking applications in the 2025/2026 financial year which show a clear commitment to one or more of the following objectives:

- Strengthens business resilience and economic benefits
- Produces local benefits, caters for local participation and increased visitors to the area
- Show collaboration, the pooling of resources and benefits to multiple community groups and audiences
- Encourages and fosters increased resilience, connectedness and wellbeing in our communities and environment.



Other important factors for a successful application

The Hibiscus and Bays Local Board will also take into account whether the applicant:

- has considered other sources of funding for their event/project/activity
- is making a contribution to the event/project/activity (financial, volunteer time etc.)
- has identified collaboration and working with other groups to deliver an event/project/activity and is seeking funding collaboratively
- is utilising and supporting volunteer groups through the delivery of an event/project/activity
- will get the community involved early on, by working collaboratively and creating opportunities to meet new people and share experiences





Exclusions – any changes?

The Hibiscus and Bays Local Board will not consider grants for financial assistance for:

- Applicants who have had one successful grant of any type of application within the current financial year from the Hibiscus and Bays Local Board unless there is mitigating circumstances (which need to be explained in the application)
- Administrative costs that are ongoing, such as salaries, debt servicing, legal expenses, medical expenses, or a commitment to ongoing funding or financial support
- Churches and Educational Institutions, except where these groups can demonstrate the wider community benefit
- Activities whose purpose serves to promote religious, political or contentious messages
- Activities that do not relate to one or more of the local board plan initiatives
- Activities or projects where the funding responsibility lies with another organisation or central government
- Prizes for sports and other events (except trophies)
- Commercial business enterprises and educational institutions in accordance with the Council's Community Grants Policy (Scope and Eligibility, Page 20)
- Applications to fund projects, programmes or facilities run by Auckland Council or its employees

See next page





Exclusions – any changes?

The Hibiscus and Bays Local Board will not consider grants for financial assistance for:

- Auckland Council CCO's or organisations who receive funding from the Auckland Regional Amenities Fund
- Applications for activities, events or projects outside of the local board area*
- Applications to subsidise rentals, reduce debt, or payment of rates unless it is a transitional Rate grant
- Applications for the purchase or subsidy of alcohol or costs associated with staging after-match functions
- Grants for the sole purpose of an individual
- Facilities grants where the project stage has already been funded



Decline Reasons

- **Does not align with local board priorities:** There is a low alignment with the local board's priorities and/or community outcome(s)
- **Grant round oversubscribed:** Limited funding
- **Central government funding role/ Other funding sources available**
- **Application insufficiently developed:** The project not fully defined or developed, applicant may be invited to submit an application to a future grant round
- **Limited community benefit(s):** Insufficient evidence of specific benefits to the community
- **Project outside of local board area:** Project not benefiting Local Board area
- **Not eligible:** Applicant or project not eligible under the terms of the Community Grants Policy 2014 or the local board grants programme





Facilities Grant – any changes?

The Facilities Grant provides funding to assist with the costs of planning or developing a facility with the Hibiscus and Bays Local Board area. This can include:

- Needs assessments
- Feasibility studies
- Investigation and design
- Small building works or minor capital work



Proposed grant round dates 2025/2026



Local Grants			
Grant round	Opens	Closes	Projects to occur after
Round One	4 August 2025	12 September 2025	1 January 2026
Round Two	9 February 2026	20 March 2026	1 May 2026
Facilities Grants			
Grant round	Opens	Closes	Projects to occur after
Round One	9 February 2026	20 March 2026	1 June 2026





Review and snapshot of 2023/2024 Rates Grants





Legacy Rates Grants

 Transitional Rates budget was allocated to local boards from Legacy Rates grants and have been continuing since amalgamation. A transition mechanism was put in place as part of LTP 2018-28 for three years.

 From 1 July 2021, this budget falls under the complete discretion of the local board.

 The Hibiscus and Bays Local Board decided to use this budget for an additional one year of support.



Legacy Rates Grants – any changes?

- This is a closed grant, only available to existing recipients to transitional rates grants
- A total of **\$53,557** was allocated to **7** applicants for Rates Grants in 2023/2024
- Transitional Rates Group Supported
 - ✓ The Girl Guides Association NZ Incorporated
 - ✓ Rothesay Bay Ratepayers & Residents Assoc. Inc.
 - ✓ Browns Bay Bowling Club Incorporated
 - ✓ Torbay Community Association Incorporated
 - ✓ Murrays Bay Sailing Club Incorporated
 - ✓ Murrays Bay Sailing Club Incorporated
 - ✓ Nippon Judo Club Incorporated
- Available budget for 2025/2026 - **\$59,483**





Thank You

**Hibiscus Coast Highway
Special Vehicle Lane**

**Hibiscus and Bays
Local Board**

15th April 2025

Think before you print

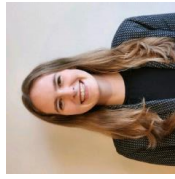
A7

AT Project Team



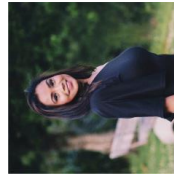
Project Manager – Madelein Hoffman

Contract management, design phase and construction phase Project Manager.



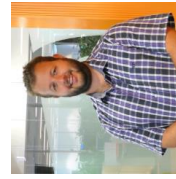
Project Engineer – Kendra Wilson

Technical lead for investigation and design. Project Sponsor. Link between wider programme and best practice representative.



Communications and Engagement – Chhavi Kohli

Oversees the Communication and Engagement Plan and its inputs / outputs.



Engagement Support – Vincent Evans-Welsh

Support for delivery of consultation.



Purpose

1. Engage the Local Board on the Hibiscus Coast Highway Special

Vehicle Lane project

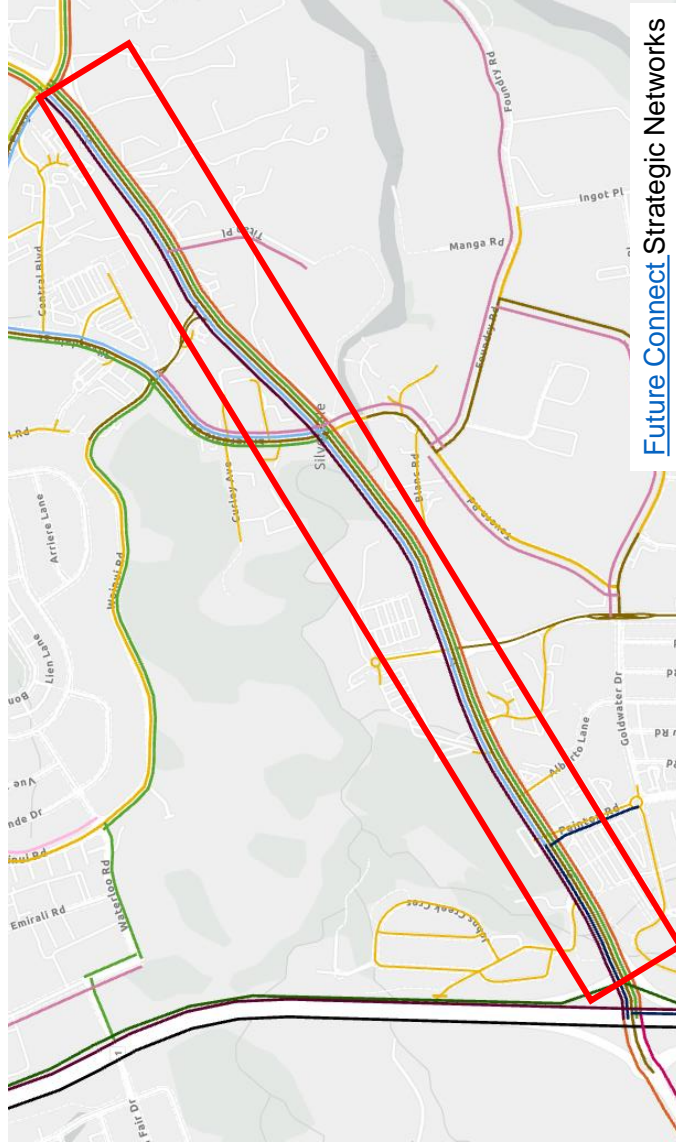
2. Seek feedback from the Local Board on the project

3. Seek endorsement from the Local Board for AT to begin public engagement



Study Area - Hibiscus Coast Highway

- Hibiscus Coast Highway from Whangaparaoa Rd – Painton Rd
- Key arterial route connecting Hibiscus Coast suburbs to the Hibiscus Coast Bus Station and SH1
- Carries approx 40,000 vehicles per day
- Strategic freight network with around 90 freight vehicles per hour in busy periods
- Strategic public transport network with up to 18 buses per hour
- Services bus routes 981, 982, 983, 984 and 985
- Expecting future growth in the surrounding areas with more demand



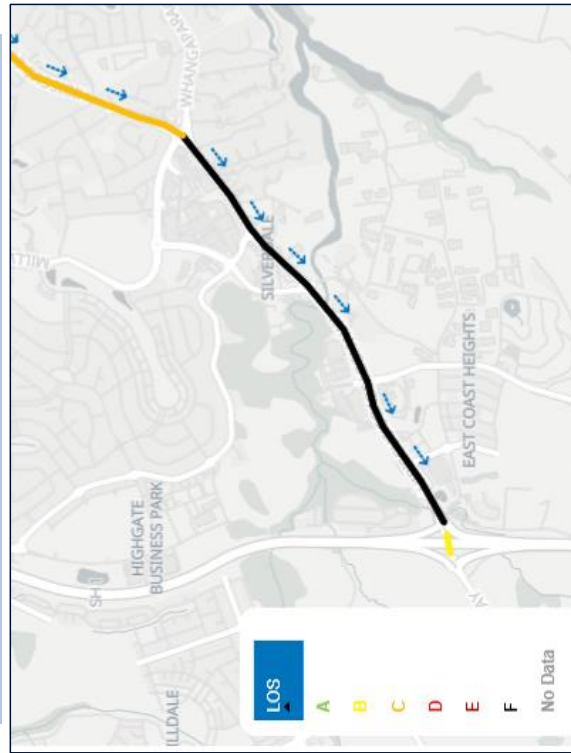
Problem

Poor Travel Times

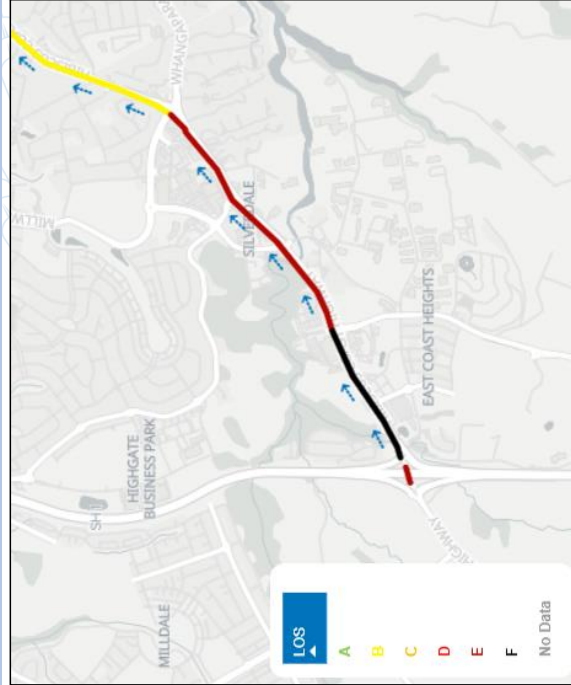
- During morning peak – delays up to 5 min, speeds as low as 15km/h
- During evening peak – delays up to 3.5 mins, speeds as low as 17km/h

- This impacts all modes including buses, freight vehicles and people carpooling

Hibiscus Coast Highway, between 7 am – 8 am Nov 2024



Hibiscus Coast Highway, between 5 pm – 6 pm Nov 2024



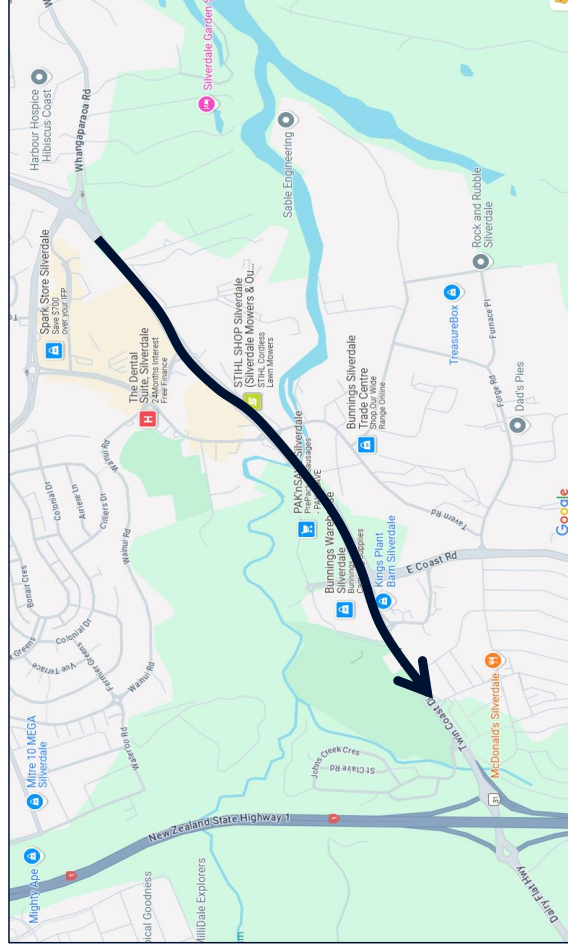
*LOS = Level of Service. Measure of Average Speed compared to the Posted Speed Limit



Proposal – Hibiscus Coast Highway T2 / Freight Lane

Morning peak only

- Operates on weekdays (Monday to Friday)
- Morning only: 6.30 am - 10 am
- Westbound only (heading towards Hibiscus Coast Station / Motorway)
- Converting a general traffic lane to the T2/Freight Lane
- Between #37 Hibiscus Coast Highway to Alberto Road (1.6km) starting after the new bus stop at #43
- Compliance cameras to ensure proper use of the lane
- Improve traffic flow for T2 vehicles, buses and freight



Proposal – Painton Rd Intersection Changes

- 24/7 right-turn bus pocket to improve bus access into the station and reduce delays.
- Align the northern kerbside lane better with the intersection near the tennis club.
- Converting northern kerbside lane to a shared through and left lane to accommodate additional traffic flow without negatively impacting other vehicles.
- Pram crossing upgrade to improve accessibility and safety for pedestrians.
- Narrowing island near Alberto Lane to create an additional lane through to the bus station



Complimentary NZTA Proposal

Evening peak only

- Northbound Bus Lane on SH1 shoulder and Silverdale off-ramp
- From Wilks Road overbridge to the Silverdale off-ramp.
- Dedicated bus lane during afternoon/evening peak hours when congestion is currently at its worst on this route.



