

I hereby give notice that an ordinary meeting of the Howick Local Board will be held on:

Date: Thursday, 17 April 2025
Time: 12.00pm
Meeting Room: Howick Local Board Meeting Room
Venue: Pakuranga Library Complex
7 Aylesbury Street
Pakuranga

Howick Local Board

OPEN AGENDA

MEMBERSHIP

Chairperson	Damian Light
Deputy Chairperson	Bo Burns
Members	Katrina Bungard
	David Collings
	Bruce Kendall
	John Spiller
	Mike Turinsky
	Adele White, JP
	Peter Young, JP

(Quorum 5 members)

Matt Fletcher
Democracy Advisor

11 April 2025

Contact Telephone: 027 226 0530
Email: matt.fletcher@aucklandcouncil.govt.nz
Website: www.aucklandcouncil.govt.nz

ITEM	TABLE OF CONTENTS	PAGE
1	Nau mai Welcome	5
2	Ngā Tamōtanga Apologies	5
3	Te Whakapuaki i te Whai Pānga Declaration of Interest	5
4	Te Whakaū i ngā Āmiki Confirmation of Minutes	5
5	He Tamōtanga Motuhake Leave of Absence	5
6	Te Mihi Acknowledgements	5
7	Ngā Petihana Petitions	5
8	Ngā Tono Whakaaturanga Deputations	5
	8.1 Deputation - Pakuranga Early Learning Centre	5
	8.2 Deputation - New Zealand Ethnic Social Services, (NZESS)	6
9	Te Matapaki Tūmatanui Public Forum	6
10	Ngā Pakihi Autaia Extraordinary Business	6
11	Governing Body Members' Update	9
12	Chairperson's Report	11
13	Proposed changes to the draft Manaaki Tāmaki Makaurau: Auckland Open Space, Sport and Recreation Strategy	13
14	Allocation of decision-making responsibilities for council-controlled organisation activities coming in house	23
15	Howick Local Board Grant Programme 2025/2026	35
16	Howick Local Grant Round Two 2024/2025 grant allocations	39
17	Kōkiri: Local Board Transport Capital Fund Projects	47
18	Howick Play Plan 2025	57
19	Howick Local Board views on the draft Contributions Policy 2025	61
20	Local board feedback on the Land Transport Management (Time of Use Charging) Amendment Bill	71
21	Public feedback on proposal to amend dog policy and bylaw	73
22	Urgent Decision of the Howick Local Board to Formalise Input into Auckland Council's submission on the proposed wastewater environmental performance standards	83
23	Record of Howick Local Board Workshop Notes	85
24	Hōtaka Kaupapa Governance Forward Work Calendar	87
25	Te Whakaaro ki ngā Take Pūtea e Autaia ana Consideration of Extraordinary Items	

1 Nau mai | Welcome

The Chair will open the meeting and welcome everyone present.

2 Ngā Tamōtanga | Apologies

At the close of the agenda no apologies had been received.

3 Te Whakapuaki i te Whai Pānga | Declaration of Interest

Members are reminded of the need to be vigilant to stand aside from decision making when a conflict arises between their role as a member and any private or other external interest they might have.

4 Te Whakaū i ngā Āmiki | Confirmation of Minutes

That the Howick Local Board:

- a) whakaū / confirm the ordinary minutes of its meeting, held on Thursday, 20 March 2025, as a true and correct record.

5 He Tamōtanga Motuhake | Leave of Absence

At the close of the agenda no requests for leave of absence had been received.

6 Te Mihi | Acknowledgements

At the close of the agenda no requests for acknowledgements had been received.

7 Ngā Petihana | Petitions

At the close of the agenda no requests to present petitions had been received.

8 Ngā Tono Whakaaturanga | Deputations

Standing Order 7.7 provides for deputations. Those applying for deputations are required to give seven working days notice of subject matter and applications are approved by the Chairperson of the Howick Local Board. This means that details relating to deputations can be included in the published agenda. Total speaking time per deputation is ten minutes or as resolved by the meeting.

8.1 Deputation - Pakuranga Early Learning Centre

Te take mō te pūrongo Purpose of the report

1. Hanin Taqieh - Community Coordinator from Pakuranga Early Learning Centre will present to the Board a deputation to establish new community connections after many recent disruptions in the local area. Highlighting the value that Pakuranga Early Learning Centre brings to the community.
2. Also presenting the work that Barnardos Aotearoa does in the community as a not-

for-profit putting tamariki, whānau and their communities first.

**Ngā tūtohunga
Recommendation/s**

That the Howick Local Board:

- a) whakamihi / thank Hanin Taqieh for her deputation and attendance.

8.2 Deputation - New Zealand Ethnic Social Services, (NZESS)

**Te take mō te pūrongo
Purpose of the report**

1. Mehdi Shahbazzpour, Manager from New Zealand Ethnic Social Services, (NZESS) will present to the Board a deputation on the fantastic work that they do in East Auckland after recently opening a new office in Botany.

**Ngā tūtohunga
Recommendation/s**

That the Howick Local Board:

- a) whakamihi / thank Mehdi Shahbazzpour for his deputation and attendance.

9 Te Matapaki Tūmatanui | Public Forum

A period of time (approximately 30 minutes) is set aside for members of the public to address the meeting on matters within its delegated authority. A maximum of three minutes per speaker is allowed, following which there may be questions from members.

At the close of the agenda no requests for public forum had been received.

10 Ngā Pakihi Autaia | Extraordinary Business

Section 46A(7) of the Local Government Official Information and Meetings Act 1987 (as amended) states:

“An item that is not on the agenda for a meeting may be dealt with at that meeting if-

- (a) The local authority by resolution so decides; and
- (b) The presiding member explains at the meeting, at a time when it is open to the public,-
 - (i) The reason why the item is not on the agenda; and
 - (ii) The reason why the discussion of the item cannot be delayed until a subsequent meeting.”

Section 46A(7A) of the Local Government Official Information and Meetings Act 1987 (as amended) states:

“Where an item is not on the agenda for a meeting,-

- (a) That item may be discussed at that meeting if-

-
- (i) That item is a minor matter relating to the general business of the local authority; and
 - (ii) the presiding member explains at the beginning of the meeting, at a time when it is open to the public, that the item will be discussed at the meeting; but
- (b) no resolution, decision or recommendation may be made in respect of that item except to refer that item to a subsequent meeting of the local authority for further discussion.”

Governing Body Members' Update

File No.: CP2025/00124

Item 11

Te take mō te pūrongo

Purpose of the report

1. A period of time (10 minutes) has been set aside for the Howick Ward Councillors to have an opportunity to update the Howick Local Board on board-specific matters.

Whakarāpopototanga matua

Executive summary

2. Providing the Howick Ward Councillors with an opportunity to update the Howick Local Board on matters they have been involved with since the last meeting that are of particular relevance to the board.

Ngā tūtohunga

Recommendation/s

That the Howick Local Board:

- a) whiwhi / receive the written and verbal reports from Cr Sharon Stewart QSM and Cr Maurice Williamson.

Ngā tāpirihanga

Attachments

There are no attachments for this report.

Ngā kaihaina

Signatories

Author	Matt Fletcher - Democracy Advisor
Authoriser	Victoria Villaraza - Local Area Manager

Chairperson's Report

File No.: CP2025/00129

Te take mō te pūrongo Purpose of the report

1. This item gives the local board chairperson an opportunity to update the local board on any announcements and note the chairperson's written report.

Whakarāpopototanga matua Executive summary

2. The local board chairperson will update the local board on the projects and issues they have been involved with since the last meeting.

Ngā tūtohunga Recommendation/s

That the Howick Local Board:

- a) whiwhi / receive the Chairperson's verbal update and written report.

Ngā tāpirihanga Attachments

No.	Title	Page
A⇒	17 April 2025, Howick Local Board: Chairperson's Report - Chair Light's Written Report	

Ngā kaihaina Signatories

Author	Matt Fletcher - Democracy Advisor
Authoriser	Victoria Villaraza - Local Area Manager

Proposed changes to the draft Manaaki Tāmaki Makaurau: Auckland Open Space, Sport and Recreation Strategy

File No.: CP2025/06675

Te take mō te pūrongo Purpose of the report

1. To seek local board endorsement of the amended Manaaki Tāmaki Makaurau: Auckland Open Space, Sport and Recreation Strategy following public consultation.

Whakarāpopototanga matua Executive summary

2. On 10 December 2024, the Policy and Planning Committee approved public consultation on the draft of Manaaki Tāmaki Makaurau: Auckland Open Space, Sport and Recreation Strategy [[PEPCC/2024/131](#) and [PEPCC/2024/132](#)].
3. A total of 402 pieces of feedback were received, through consultation and a People's Panel survey. Overall, there is strong support for the draft strategy but also opportunities to make changes. A detailed feedback report is provided in Attachment A.
4. Having considered public feedback, as well as local board resolutions on the draft strategy, staff propose changes to the draft strategy, the most significant being:
 - more explicitly emphasising the importance of equity and accessibility in providing open spaces and play, sport and recreation opportunities (including in the strategic directions, investment principles and policies)
 - greater emphasis on the importance of environment and biodiversity outcomes (including in the investment principles and Policy one)
 - greater emphasis on the purpose and benefits of regional parks (in Policy two)
 - including the capacity-focused approach (Option package two) for open space provision standards (in Policy two)
 - refining the strategic directions based on a range of other consultation feedback
 - making the decision-making responsibilities of local boards clearer
 - clarifying the meaning of 'value for money'
 - providing clearer direction in the policy section to ensure local boards receive the necessary advice for decision-making
 - clarifying that the council attempts to acquire land early in the development process as budget is available.
5. The proposed changes are reflected in the amended strategy (see final draft in Attachment B with track changes).
6. Local boards have called for a better understanding of local impacts. Staff have developed examples of implementation scenarios, existing good practices and potential local applications of the new open space provision standards (see Attachment C), noting that much of how the strategy is implemented is at the discretion of each local board.
7. In addition, staff are working with local board advisors to scope how advice to local boards could be improved to deliver on the strategy. To date, we have identified potential improvements: consolidating information provided to local boards, involving local boards

earlier in planning processes, improving alignment between regional and local planning cycles, funding and budgets and providing information on trade-offs (see Attachment D).

8. The Policy and Planning Committee will consider adopting the final amended strategy in May 2025. The agenda report will contain the local board resolutions.
9. If the final amended strategy is adopted, staff will develop an implementation and monitoring plan, including tools and guidance, to support delivery by local boards and the Governing Body. Staff will also continue to scope improvements to local board advice.

Ngā tūtohunga Recommendation/s

That the Howick Local Board:

- a) ohia / endorse the final amended Manaaki Tāmaki Makaurau: Auckland Open Space, Sport and Recreation Strategy in Attachment B
- b) ohia / endorse updating the open space provision standards in the strategy with Option package two – capacity-focused approach: provide more open space than currently enabled in high- and medium-density areas where residents have low or moderate levels of provision.

Horopaki Context

The draft strategy outlines how we will provide open spaces and sport and recreation opportunities

10. As a regional public policy, the draft of Manaaki Tāmaki Makaurau: Auckland Open Space, Sport and Recreation Strategy sets the strategic directions we seek to achieve for open space, sport and recreation in Auckland and against which we will monitor progress. It forms a unifying roadmap for the council group to deliver and for other non-council organisations and community groups to contribute.
11. It brings together five existing strategies, policies and plans and provides a refreshed and consolidated approach to planning and investment. It aims to provide open spaces and sport and recreation opportunities to benefit all Aucklanders, now and in the future, to improve the health of Tāmaki Makaurau.

The development of the draft strategy was supported by an advisory structure

12. The development of the draft strategy was informed by a strong evidence base and supported by an advisory structure that met regularly to provide input and direction.
13. The advisory structure includes the Open Space, Sport and Recreation Joint Political Working Group (featuring two councillors, two local board members and one Houkura member), an advisory and Māori rōpū (with mana whenua, mataawaka and sector representatives) and key kaimahi from across the council group.
14. Local boards were also engaged throughout the development of the draft strategy via memos, presentations, briefings, workshops and business meetings (refer Attachment A, pages 3-4).

Gathering Aucklanders' views provides an opportunity to further refine the draft strategy

15. On 10 December 2024, the Policy and Planning Committee approved public consultation on the draft strategy [[PEPCC/2024/131](#) and [PEPCC/2024/132](#)].
16. Consultation was designed to seek Aucklanders' views on the draft strategy and identify any relevant questions, concerns or additional information to strengthen or modify it.

17. Consultation took place from 10 February to 10 March 2025 and was advertised on Our Auckland and in libraries. Staff also requested that local board engagement advisors and key stakeholders share the consultation opportunity with their communities and networks. The engagement approach involved online submissions via the Have Your Say project page, by email or postal mail, as well as in person drop-in sessions at libraries and Pasifika Festival and hui with the demographic advisory panels, key stakeholders and mataawaka.
18. Staff also ran a People's Panel survey in December 2024.
19. The five topics we asked for feedback on were:
 - Where we are heading (strategic directions)
 - Our approach to investment (investment principles)
 - Making the most of our open spaces (policy one)
 - Providing the right open spaces in the right places (policy two), including two options for open space provision outlined below
 - Supporting Aucklanders to be more active more often (policy three).
20. The consultation included the following two option packages to update the open space provision standards:
 - Option package one – High-density focused: provide more open space than currently enabled in high-density areas
 - Option package two – Capacity focused: provide more open space than currently enabled in high- and medium-density areas where residents have low or moderate levels of existing provision.
21. These two option packages are explained in more detail from paragraph 31.

Tātaritanga me ngā tohutohu Analysis and advice

The consultation feedback shows we are on the right track

22. We received 149 pieces of consultation feedback, as well as 253 responses to the People's Panel survey. Attachment A provides a detailed summary of the feedback.
23. Submitters included members of the public, a range of partners and stakeholders (including organisations such as Aktive, Forest and Bird, Healthy Auckland Together, Property Council New Zealand and Te Whānau o Waipareira) and members of the council's demographic advisory panels.
24. There is strong support for:
 - the draft strategy overall
 - the five draft strategic directions, with the highest support for Strategic direction five: support Aucklanders to live healthy, active lives
 - the four draft investment principles, with the highest support for investment principle one: taking a benefits-led approach to improve the holistic wellbeing of people, places and the environment
 - all three policies, with the highest support for Policy one: making the most of our open spaces.
25. Overall, submitters prefer a capacity-focused approach (Option package two) – taking an equity lens to deliver more open space where it is needed most in high- and medium-density areas – rather than a high-density-focused approach (Option package one) – delivering more open space in high-density areas – for open space provision standards.

26. Analysis of the qualitative feedback outlined a range of key themes:
- open and green spaces are essential for mental and physical health
 - all Aucklanders must have access to safe, well-maintained open spaces
 - open space planning needs to be an integral part of urban planning
 - open spaces must serve a wide range of functions
 - our resources should be used efficiently.

Staff propose changes to the draft strategy in response to the feedback

27. Staff considered the feedback received and are proposing amending the strategy as a result (see Attachment A, pages 38-47).
28. A summary of the most significant proposed changes is shown in Table One. In addition, staff have made minor changes to address specific feedback, clarify intent and meaning or update technical information.

Table One: Proposed changes to the draft strategy based on consultation feedback

- More explicitly emphasise the importance of equity and accessibility in the strategy on pages 7, 8, 11, 34, 46, 81, 82, 85 and in the glossary
- Include greater emphasis on the importance of environment and biodiversity outcomes on pages 14, 20, 25, 29, 31, 44, 45 and 46
- Include greater emphasis on the purpose and benefits of regional parks on page 78
- Include the capacity-focused approach (Option package two) for open space provision standards and delete the high-density focused approach (Option package one) on pages 46, 48, 49 and 52
- Refine the strategic directions based on a range of other consultation feedback on pages 11, 12 and 14.

Staff also propose changes to the draft strategy in response to local board resolutions

29. Staff have also amended the draft strategy in response to local board feedback received in November and December 2024. The key changes are presented in Attachment A (pages 48-49) and summarised in Table Two below.

Table Two: Proposed changes to the draft strategy in response to local board feedback

- Make the decision-making responsibilities of local boards clearer, moving the table previously on page 23 to page 9
- Clarify the meaning of 'value for money' in the strategy on page 17 and in the glossary
- Provide clearer direction in the policy sections to ensure local boards receive the necessary advice for decision-making on page 28
- Clarify that the council attempts to acquire land early in the development process on page 58.

30. All proposed changes are included in track changes in the amended strategy (Attachment B).

Staff recommend a capacity-based approach to open space provision standards

31. As part of the strategy development, staff are proposing updated provision standards for pocket parks and neighbourhood parks to provide better open space outcomes in high- and medium-density areas and greenfield areas. The provision standards help us to ensure we are providing the right open spaces in the right places so Aucklanders can play, be active and enjoy nature.

Summary of option packages analysis – for more details refer CP2025/06675

A report to local boards and to the Policy and Planning Committee in late 2024 provided detailed analysis of the two option packages. Staff recommended Option package two as the preferred option.

Both packages are outlined below. They reflect different ways of adding to our existing open space network across Auckland to continue serving the needs of a growing population.

Density	Park type	Current provision standards	Option package one: High-density focused	Option package two: Capacity focused (recommended)
High-density areas or other areas developed to an equivalent density	Pocket parks	1000-1500m ² provided at no capital cost to the council	1000-1500m ² acquired at cost to the council regardless of capacity	1000-1500m ² in areas with moderate or low capacity acquired at cost to the council
	Neighbourhood parks (within 400m walking distances)	3000m ² to 5000m ²	5000m ² regardless of capacity	2000m ² to 5000m ² depending on capacity
Medium-density areas	Pocket parks	No pocket parks	1000-1500m ² provided at no capital cost to the council	
	Neighbourhood parks (within 400m walking distances)	3000m ² to 5000m ²	No change	2000m ² to 5000m ² depending on capacity
Low-density areas	Neighbourhood parks (within 600m walking distances)	3000m ² to 5000m ²	3000m ²	

Urban density is based on the Auckland Unitary Plan zones. Varying provision standards based on planned intensification levels enables us to better provide according to the likely demand for public open space, as well as likely private open space provision levels.

The capacity measure is a proposed addition to the existing policy. While the quantity of open space provision per capita is not a meaningful metric in isolation, it provides a basis of comparison when considering future provision across Auckland’s urban areas. There is no accepted international or national capacity standards. Based on local observations and international examples, we propose that capacity is considered low when below 10m² of open space per person, moderate when between 10 and 20m² and high when more than 20m².

Both packages involve trade-offs, as shown below.

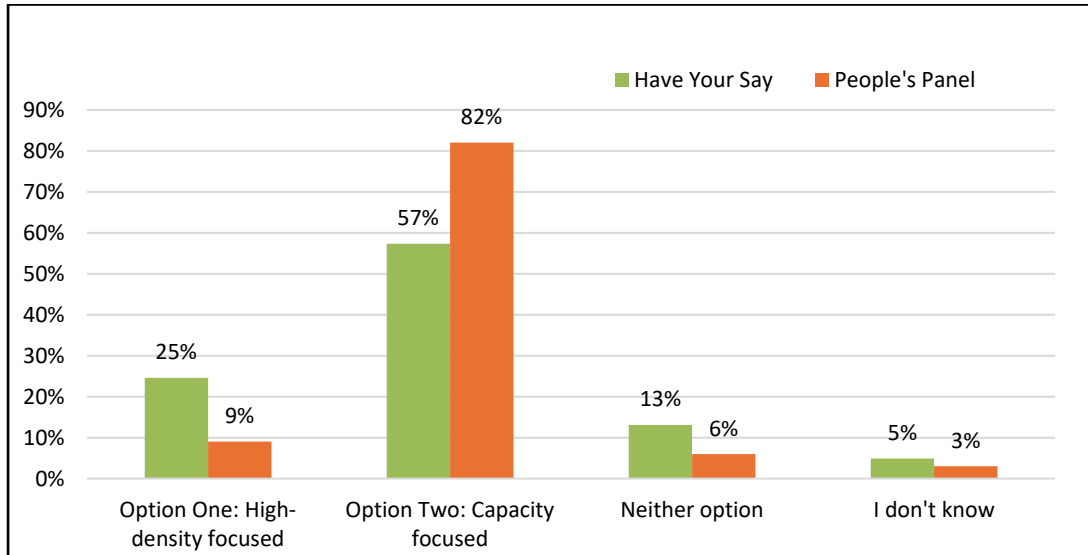
	Trade-offs
Option package one High-density focused	Delivers more open space in high-density areas than current policy but larger parks might be difficult to acquire due to land ownership and cost. Is a simple standard to understand but not tailored to where provision is most needed.
Option package two Capacity focused	Is more affordable than Option package one but does not deliver the same level of additional open spaces in high-density areas. Takes an equity lens by focusing provision where most needed but is more complicated to understand and apply.

32. To illustrate how the two open space provision option packages would apply on the ground, staff have developed some case studies (with maps), which are provided in Attachment C.

Consultation feedback supports the capacity-based approach

- 33. Overall, respondents expressed the importance of open space for mental and physical wellbeing and their desire for open space provision to be an integral part of neighbourhood planning. Feedback highlighted the importance of taking an equity lens to open space provision, targeting areas where it is needed most.
- 34. Consultation feedback (see Attachment A, page 33) shows an overall preference for a capacity-focused approach to open space provision (Option package two). The support for Option package 2 amongst Have Your Say submitters is similar across Auckland, and slightly higher in the north area.

Figure One: Preference for open space provision standards



- 35. Stakeholders and partners also favour Option package two over Option package one.
- 36. Property Council New Zealand, however, expressed concerns that either package was too rigid and that they would increase the cost of the council’s development contributions levy and ultimately development. The development sector also wishes for more delivery partnerships with the council. This can be investigated at implementation stage.
- 37. Based on previous analysis and consultation feedback, staff recommend that the final amended strategy includes Option package two.

Staff will continue work to support implementation of the strategy

- 38. Both local boards and the Governing Body have decision-making responsibilities for the provision of open space, sport and recreations services and assets.
- 39. Staff have developed examples of local board planning and delivery scenarios and case studies of what good practice looks like (see Attachment C). They provide an overview of how key parts of the strategy could be applied locally and examples of things that are already being done well and we would like to see more of. These are included to aid local board understanding of what delivery could look like. How the strategy would be implemented if adopted would be at the discretion of local boards and the Governing Body in accordance with their decision-making responsibilities.
- 40. Following feedback from local boards on the draft strategy prior to consultation, staff have been working with local board advisors and operational staff to understand opportunities to improve advice and support to local boards for implementation of the strategy.
- 41. The multitude of documents, information and processes owned and managed by a range of teams across the council currently makes it difficult to provide concise, consistent and up-to-date advice to local boards. This impacts their ability to understand trade-offs and prioritise decisions to deliver for their communities.

42. Preliminary findings point to potential improvements, such as consolidating information provided to local boards, involving local boards earlier in planning processes, improving alignment between regional and local planning cycles, funding and budgets and providing information on trade-offs (see Attachment D).
43. Staff will continue investigating potential improvements to the advice local boards receive, which will inform the development of an implementation and monitoring plan for the strategy (if adopted).

Tauākī whakaaweawe āhuarangi

Climate impact statement

44. The draft strategy considers how to adapt to the challenges posed by climate change and work to mitigate it, including by reducing emissions. One of the five strategic directions is to enhance our resilience to climate change and our contribution to mitigation, including through reducing carbon emissions, in line with Te Tāruke-ā-Tāwhiri: Auckland's Climate Plan.
45. The draft strategy outlines what we will do to make this happen, including developing the blue-green network, accelerating the use of nature-based solutions, improving the environmental performance of our open spaces and facilities and adapting our open spaces and facilities on the coast and in flood-prone areas.
46. While we already contribute to this strategic direction, the draft strategy proposes a 'do more' approach to implementation. This is in recognition of the significant impacts of climate change on Aucklanders now and in the future.
47. The investment approach in the draft strategy also includes a greater emphasis on identifying and quantifying the environmental benefits of our investment and designing initiatives to deliver multiple benefits, such as making recreation parks better able to support stormwater management.

Ngā whakaaweawe me ngā tirohanga a te rōpū Kaunihera

Council group impacts and views

48. Kaimahi from across the council group have provided input throughout the development of the draft strategy.
49. Implementing the strategy will span across the investment areas identified in the council's performance management framework.
50. If the final amended strategy is adopted, an implementation and monitoring plan will be developed to support delivery. Kaimahi from across the council group will continue to provide input into this plan.

Ngā whakaaweawe ā-rohe me ngā tirohanga a te poari ā-rohe

Local impacts and local board views

51. Levels of support for the draft strategy was broadly similar among Have Your Say respondents across the region. Attachment A provides sub-regional breakdowns of the results.
52. Local boards have been engaged throughout the development of the draft strategy. Two local board members were in the Open Space, Sport and Recreation Joint Political Working Group: Member Sandra Coney and Member Margi Watson. In addition, staff provided memos and briefings and presented at workshops and business meetings.
53. Local boards provided resolutions on the draft strategy going for consultation at their November / December 2024 business meetings.

54. While there was general support for the strategic directions and investment principles in the draft strategy, local boards made a range of resolutions seeking better guidance from staff on open space matters, particularly the understanding of local impacts.
55. Staff have attempted to respond to local boards' request for more targeted advice (see paragraphs 38 to 43 and Attachment C and Attachment D).
56. Local boards will consider how to deliver on the strategy, if adopted, as part of their local board plans and work programmes.

Tauākī whakaaweawe Māori Māori impact statement

57. The views of mana whenua and mataawaka have been sought throughout the development of the draft strategy.
 - The Open Space, Sport and Recreation Joint Political Working Group includes one Houkura member, first Tony Kake, replaced subsequently by Pongarauhine Renata.
 - Both the advisory and Māori rōpū included mana whenua and mataawaka representatives. All iwi were invited to join the rōpū or engage in the manner that best suited them.
 - Mana whenua and mataawaka organisations were kept up to date with progress and invited to provide feedback during the consultation process.
58. Guided by the Māori rōpū, the draft strategy incorporates a te ao Māori lens, one of the expectations of success set by the Governing Body and a key theme identified in the background paper. It is adapted from the te ao Māori framework developed for Te Tāruke-ā-Tāwhiri – Auckland Climate Plan, and builds on a single value, manaakitanga. It includes a focus on investing in 'by Māori for Māori' solutions, building the capacity and capability of mana whenua and mataawaka and partnering with mana whenua to co-design our spaces and places.
59. Consultation feedback on the draft strategy highlighted the importance of focusing on equity and addressing barriers to participation for Māori. This can be achieved by targeting investment, supporting Māori-led initiatives, aligning delivery with Māori health providers to improve overall wellbeing and providing spaces and places that are safe, affordable and accessible.
60. Feedback also called for embedding Māori leadership at decision-making and implementation levels, including support for co-governance arrangements which is reflected in the strategy.

Ngā ritenga ā-pūtea Financial implications

61. The strategy will be implemented using available budgets set during long-term plan and annual plan processes. When constrained by resourcing, the investment principles will support decision-makers in prioritising investment.
62. The draft strategy reflects the resource constraints faced by the council and the need to deliver value for money. The proposed investment approach emphasises the importance of establishing a robust evidence-based approach to investment and prioritisation to better support elected decision-makers.
63. Advice around investment in open space and sport and recreation will be based on a better articulation of costs and benefits, including in relation to local board plan priorities. This will be supported by a new tool to enable better identification, description and quantification of these benefits to help local boards prioritise investment.

64. Consideration of a broad range of funding and delivery tools will support implementation, including making the most of what we have, delivering differently and partnerships.

Ngā raru tūpono me ngā whakamaurutanga Risks and mitigations

65. Potential risks and mitigations are outlined below:

If...	Then...	Possible mitigations...
Local boards do not think the final amended strategy addresses their concerns	They will be less likely to support it, and the committee will be less likely to adopt it. Medium reputational, strategic and delivery risk.	<ul style="list-style-type: none"> Staff have proposed changes to the draft strategy to reflect local board feedback. Delivery of the strategy will be also supported by an implementation and monitoring plan. The three-yearly plan will set out what we will deliver and track progress against the five strategic directions. As part of this, staff are working to improve advice and support to local boards.
The final amended strategy does not provide clear enough direction to implementers	The strategy may not be incorporated into business as usual. Low reputational, strategic and delivery risk.	<ul style="list-style-type: none"> Implementers provided regular input into development of the final amended strategy. The implementation context, including financial constraints, has also informed the final amended strategy. Staff are working with local boards on the advice and support they need for implementation. Staff will continue to work with colleagues in planning for and supporting delivery, and monitoring progress.
The final amended strategy is perceived as unfunded.	Decision-makers may be less likely to adopt it. Medium financial, reputational and strategic risk.	<ul style="list-style-type: none"> The final amended strategy sets strategic directions and investment principles to guide prioritisation and enable better informed discussions on future budget allocation.

Ngā koringa ā-muri Next steps

66. Staff will include local board views when seeking adoption of the strategy from the Policy and Planning Committee in May 2025. The five existing strategies, policies and plans forming Auckland Council's open space, sport and recreation policy framework would be rescinded.
67. Staff will present the consultation feedback and proposed changes to the strategy to the Open Space, Sport and Recreation Joint Political Working Group at its meeting on 11 April 2025. Input and direction from the joint political working group will be reflected in the agenda report to the Policy and Planning Committee.
68. Staff will also present the consultation feedback and proposed changes to the strategy to the Local Board Chairs' Forum on 14 April 2025.
69. If the final amended strategy is adopted, staff will develop an implementation and monitoring plan for committee's approval. The plan will be developed with input from relevant staff across the council group, including Governance and Engagement. The plan would help

embed the strategy's investment principles into how we work, deliver on the strategic directions and monitor and evaluate delivery against the directions.

70. Local boards have significant decision-making responsibilities with regards to implementing the strategy at the local level. This involves delivering open spaces and sport and recreation opportunities to their communities in line with the strategy through development of their local board plans and work programmes.
71. Staff will continue working with local boards on improvements to advice, recognising that different local boards and / or clusters of local boards may require different and bespoke advice, and that the organisation is pivoting to support this.

Ngā tāpirihanga Attachments

No.	Title	Page
A⇒	Feedback analysis report	
B⇒	Manaaki Tāmaki Makaurau: Auckland Open Space, Sport and Recreation Strategy (final draft version with track changes)	
C⇒	Putting things into practice – scenarios, examples of good practices and applications of the two open space provision option packages (with maps)	
D⇒	Preliminary findings for improving advice to local boards	

Ngā kaihaina Signatories

Author	Aubrey Bloomfield - Senior Policy Advisor
Authorisers	Lou-Ann Ballantyne - General Manager Governance and Engagement Carole Canler - Senior Policy Manager Louise Mason - General Manager Policy Victoria Villaraza - Local Area Manager

Allocation of decision-making responsibilities for council-controlled organisation activities coming in house

File No.: CP2025/06682

Te take mō te pūrongo

Purpose of the report

1. To seek feedback from local boards on the proposed approach to allocating decision-making responsibilities between the Governing Body and local boards as part of Annual Budget 2025/2026 decisions. In particular, for urban regeneration, property management and economic development activities which move into Auckland Council as a result of council-controlled organisations (CCO) reform decisions.
2. To identify any additional matters requiring review.

Whakarāpopototanga matua

Executive summary

3. The CCO reform package in the Mayoral proposal, considered whether CCOs and the Auckland Council Group are structured in the best way to deliver on the long-term plan and its broader vision for Auckland. The goals of the reform included improving democratic accountability, strategic direction and council group effectiveness and efficiency.
4. In December 2024 the Governing Body confirmed structural changes to move urban regeneration, property management and economic development activities into Auckland Council no later than 1 July 2025.
5. This means that decision-making responsibility for the activities currently governed by the Eke Panuku and Tātaki Auckland Unlimited (TAU) boards needs to be allocated by the Governing Body to either the Governing Body or local boards in accordance with section 17 of the Local Government (Auckland Council) Act 2009. This will be recorded in the allocation of decision-making table (allocation table) for inclusion in the Annual Plan 2025/2026.
6. For **urban regeneration**, staff recommend decision-making for the overall programme and associated budgets, and the city centre and waterfront programme sit with the Governing Body. Decision-making responsibility for implementing agreed priority location programmes would sit with local boards.
7. It is recommended that decision-making responsibility in relation to **property and marina management** also sit with the Governing Body, noting that further work is underway through the Group Property Review which might result in changes in the future.
8. In the future, new urban regeneration or development programmes could be established. The council proposes to undertake further work to clarify how these processes can best reflect the principle of subsidiarity.
9. For **economic development** activities staff do not consider that substantive changes to the existing allocation table are required. The allocation table already outlines that decisions on the regional economic development strategy, business improvement district (BID) policy, city centre and Auckland-wide economic development programmes sit with the Governing Body. Local boards have always held decision-making responsibilities for influencing local BID programmes, local economic development plans, projects and other local initiatives.
10. Staff are aware that legislative change is proposed to bring several Auckland Transport functions into the council parent and the matters covered in this report should assist with the process of allocation of those decisions to the Governing Body or local boards in the future.

Ngā tūtohunga Recommendation/s

That the Howick Local Board:

- a) provide feedback on staff proposals relating to the allocation of decision-making responsibility for:
 - i. the urban regeneration and property management activities currently governed by the Eke Panuku board
 - ii. the economic development activities currently governed by the Tātaki Auckland Unlimited boardto either the Governing Body or local boards in accordance with section 17 of the Local Government (Auckland Council) Act 2009
- b) note that staff recommendations and feedback from local boards will be considered at the Governing Body meeting on 29 May 2025 and associated changes to the allocation of decision-making table will be implemented as part of Annual Plan 2025/2026 decisions
- c) note that further work is required in relation to determining the future decision-making allocation on:
 - i. funding of new priority urban regeneration or development locations as additional programmes are identified
 - ii. how anticipated demand from local boards for local economic development and urban regeneration advice is to be addressed
 - iii. property management decisions (undertaken as part of the Group Property Review)
- d) provide feedback on any other matters requiring review.

Horopaki Context

CCO reform decisions included moving urban regeneration, property and economic development activities in-house

11. The CCO reform included analysis on the rationale for and performance of the current CCO model, and structural reform options for three CCOs – Auckland Transport, Eke Panuku and Tātaki Auckland Unlimited. The goals of the reform are to improve:
 - i. democratic accountability over projects and services delivered to Aucklanders by CCOs
 - ii. strategic alignment between council decision making and what CCOs do for Aucklanders
 - iii. the effectiveness and efficiency of how the Auckland Council Group operates.
12. Decisions on CCO reform were made on 12 December 2024 ([GB/2024/179](#)) and included transferring and integrating urban regeneration, property management and economic development activities into council. Key reasons for this integration include:
 - Urban regeneration – strengthening council’s ability to coordinate planning, strategy and delivery in a place-based way, including around strategic growth opportunities, large-scale developments and urban regeneration.
 - Property management – improving processes for buying, managing and selling council assets and improving collaboration across the council group to achieve greater financial and strategic value from property assets.

- Economic development – increasing the council’s economic policy capability, identifying new opportunities and integrating advice on economic development issues into broader decision-making.
13. As a result, there may be some additional decisions to be made by the Governing Body or local boards, that were previously made by the Eke Panuku and Tātaki Auckland Unlimited Boards.

Legislation sets how decision-making is allocated, including the use of the subsidiarity principle

14. The basis on which decision-making responsibility is allocated is what is known as the subsidiarity principle, as set out in Section 17 of the Local Government (Auckland Council) Act 2009 (LGACA). This states that decision-making should be local unless the nature of the activity is such that decision-making on an Auckland-wide basis will better promote the well-being of communities across Auckland because:
- the impact of the decision will extend beyond a single local board area, or
 - effective decision-making will require alignment or integration with other decisions (that sit with the GB), or
 - the benefits of a consistent or co-ordinated approach across Auckland will outweigh the benefits of reflecting the diverse needs and preferences of the communities within each local board area.
15. The Governing Body is responsible for allocating decision-making responsibility for non-regulatory activities in accordance with the principles outlined above, after considering the views and preferences expressed by each local board. The allocation of decision-making responsibility is then recorded in the *Decision-making responsibilities of Auckland Council’s Governing Body and local boards Policy*, which is included in each year’s Annual Plan (or the long-term plan every third year). The core part of this policy is what is generally known as the allocation table, which lists the non-regulatory activities for which the Governing Body and local boards have decision-making responsibility.
16. The allocation table, with proposed changes shown, is included at **Attachment A**. Also included at **Attachment B** is a list of the current Eke Panuku activities in the local board area, to provide current context.
17. These proposals were workshopped with the Governing Body on 26 March 2025 and a recording of that meeting was emailed to all local board members on 28 March and can be found [here](#). The presentation is available [here](#).

Tātaritanga me ngā tohutohu Analysis and advice

18. This section is divided into the three key activities being transferred to Auckland Council: urban regeneration, property management and economic development. It outlines where decision-making responsibility currently sits or is proposed to sit and the rationale.

Allocation of decision-making responsibility for urban regeneration (new section in allocation table)

19. While activities that enable urban regeneration (such as planning, development streetscape improvements) are already covered in the allocation table, staff are proposing identifying urban regeneration as a stand-alone activity to enhance clarity.
20. Given the complexity and advanced state of council’s priority location urban regeneration programme, there is a need to minimise the risk of implementation being slowed down. Staff propose that this change is managed using the following principles:

- delivery of approved urban regeneration programmes will continue, using current business cases and detailed budgets (approved by the Eke Panuku board)
- the Governing Body will allocate budgets to these programmes.

21. The proposed allocations relate to current programmes and in part are in recognition that these must continue without issues despite the structural change. Further decisions will need to be made for new programmes that will be developed over time which cannot be accommodated prior to 1 July. This includes the governance and budget allocation of any new programmes.

Proposed additions to the allocation table

22. The principles set out in Section 17 of the LGACA (set out at Paragraph 14 above) have been applied to existing urban regeneration activities. **Table One** sets out the proposed additions to the allocation table, with the reasoning for Governing Body or local board decision-making set out below. Note that the high-level wording is consistent with conventions in the existing allocation table.

Table One – Proposed additions to the allocation table for urban regeneration

Proposed Governing Body decision-making	Proposed local board decision-making
<ul style="list-style-type: none"> • Auckland-wide urban regeneration programme outcomes and objectives • Urban regeneration in city centre and waterfront • Overall funding plan for priority locations • Allocation of budget for priority location plans including sequencing of urban regeneration projects within annual budget envelopes • Identification of priority locations for urban regeneration programme 	<ul style="list-style-type: none"> • Implementation of priority location plans, within parameters set by the Governing Body • Local urban regeneration projects that are not part of the Auckland-wide urban regeneration programme, for example streetscape improvements or local service property optimisation projects

Proposed allocation to Governing Body: decision-making over urban regeneration programmes

23. Decision-making responsibility for regional urban regeneration activities is proposed to be allocated to the Governing Body as follows:
- Auckland-wide urban regeneration programme outcomes and objectives – the overall programme has region-wide outcomes, such as commercial and housing development. Therefore, the Section 17 principles of taking a consistent and coordinated approach across Auckland and enabling alignment with other decisions that sit with the Governing Body, are considered to be met.
 - Urban regeneration in the city centre and waterfront – these programmes are recommended to sit with the Governing Body because the scale, influence and impact of these programmes extend beyond just the Waitemata Local Board area. The success of the city centre is important for Aucklanders, New Zealanders and visitors as a regional destination.
 - Overall funding plan for priority locations – the Governing Body will allocate overall funding for the lifetime of programmes, often over 10-20 years or more.
 - Allocation of budget for priority location plans including sequencing of urban regeneration projects within annual budget envelopes - the nature of revenue and funding available for urban regeneration and the manner in which programmes progress, is based on elements such as market forces, and regulatory processes. This means that budgets cannot easily be apportioned to local boards and need to sit with the Governing Body, at least initially.

- Identification of priority locations for urban regeneration programme – decision-making over identification of priority locations for the overall programme is proposed to sit with the Governing Body as new locations and programmes will form part of the Auckland-wide network.

Proposed allocation to local boards: decision-making over urban regeneration programmes

24. The following activities are proposed to be allocated to local boards:

- Implementation of priority location plans, within parameters set by the Governing Body – this will include an annual work programme specifying projects, sites and/or activities in the local board area.
- Local urban regeneration projects that are not part of the Auckland-wide urban regeneration programme, for example streetscape improvements or local service property optimisation projects – these may be projects that a local board has identified as a local priority in its local board plan and has allocated local funding to.

Further work to be done to review urban regeneration decision-making activity

25. In alignment with council’s direction to empower local boards to carry out their local leadership role, staff consider that it may be possible to allocate further responsibilities to local boards. However, further work is required to test this assumption.
26. Staff propose that the current work being overseen by the Joint Governance Working Party also consider ways to give local boards a meaningful role in shaping the case for any new urban regeneration or development priority areas.

Practical application of decision-making for urban regeneration in 2025/2026

27. **Table Two** outlines how the allocation of urban regeneration responsibilities would work in practice. The table also includes a column outlining the work and decisions that staff would undertake under delegation.

Table Two – Proposed urban regeneration programme decision-making in practice

Governing Body (or Committee)	Local Boards	Staff via Chief Executive general delegation (from GB and local boards)
<ul style="list-style-type: none"> • Approves Auckland Plan, land use and infrastructure policy • Approves urban regeneration investment through the LTP/Annual Plan, including: <ul style="list-style-type: none"> ○ Urban regeneration budget ○ Revenue target from asset recycling (property sales) ○ City Centre Targeted Rate programme • Approves new priority locations or regional urban regeneration programmes • Approves parameters for investment in priority 	<ul style="list-style-type: none"> • Consulted prior to LTP, annual plan, new priority locations and for city centre and regional programmes • Endorses high-level programme business case for priority locations, including masterplan • NEW Approves annual work programme specifying projects, sites and/or activities in the local board area • NEW Approves annual placemaking and activation plans and budget for its area • NEW Approves urban regeneration project plans 	<ul style="list-style-type: none"> • Provides advice to Governing Body and local boards to inform their respective decisions in relation to urban regeneration • Implements approved urban regeneration programme business cases and projects in accordance with delegations • Executes property transactions, including preparing go-to-market strategies for development sites (within parameters set by local boards) • Provides regular delivery performance reporting to Governing Body and local boards

<p>locations including strategic outcomes, high-level costs, benefits, and delivery timeframes.</p> <ul style="list-style-type: none"> • Decision-maker for city centre and waterfront programmes • Approves acquisition of property • Approves disposal of non-service property 	<p>within the parameters set out within approved programme business cases (i.e. scope, cost, location, benefits delivered)</p>	<ul style="list-style-type: none"> • Works closely with local boards, both formally and informally, from urban regeneration plans, to design of public realm projects to property optimisation, regular workshops, meetings and site visits
---	--	--

Allocation of decision-making responsibilities for property and asset management

28. Auckland Council will become responsible for Eke Panuku functions including the management of commercial properties, property transactions (sales and acquisitions) and management of significant assets like the city centre marinas.
29. **Table Three** sets out the statutory decision-making responsibilities of the Governing Body, which may be delegated to local boards. This is outlined in the first section of the Decision-making responsibilities of Auckland Council’s Governing Body and local boards Policy.

Table Three – Property and marina management statutory decision-making

<p>Governing Body statutory decision-making</p>	<p>Local board decision-making that is delegated from the Governing Body</p>
<ul style="list-style-type: none"> • Regulatory decisions and statutory responsibilities e.g. disposals 	<ul style="list-style-type: none"> • Service optimisation decisions over local service property

30. **Table Four** sets out non-regulatory decisions, which can be allocated to local boards, reflected in the allocation table.

Table Four – Property and marina management non-regulatory decision-making (new text in the ‘facilities and asset management section)

<p>Governing Body decision-making (statutory and non-regulatory activities)</p>	<p>Local board decision-making (non-regulatory and delegated decisions)</p>
<ul style="list-style-type: none"> • Commercial property and marina management • Management of the non-service property infrastructure as identified in the Infrastructure Strategy 	<ul style="list-style-type: none"> • Acquisition of new local community facilities (including local libraries, local sport and recreation facilities, local parks and reserves), and their specific location, design, build and fit out within budget parameters agreed with the Governing Body

Governing Body decision-making over property and asset management

31. The Governing Body has an overarching statutory responsibility for managing the network of facilities and overall financial oversight of the council.
32. Commercial property and marina management are allocated to the Governing Body because these properties are not delivering local council services and are an important financial contributor to council budgets. This is also the case with management of non-service property in line with the Infrastructure Strategy.

Local board decision-making over property and asset management

33. Local boards oversee the delivery of community services (such as libraries and community services), in ‘local service properties’. The Governing Body has delegated some decision-making to local boards enabling them to oversee the disposal of local service properties and reinvest this to achieve other community outcomes. This is called service property optimisation, for example by merging two council services into one building and selling the other property. Local boards also have decision-making over the acquisition of new local community facilities including their specific location, design, build and fit out within budget parameters agreed with the Governing Body.

The Group Property Framework is intended to provide principles, guidance and recommendations which will assist in improving decision-making on council’s property portfolio

34. The group property framework is intended to provide an overarching guide to the management of property across the council group, based on robust principles and agreed definitions. The scope of the group property review was agreed by the Revenue and Expenditure Committee in September 2024 ([link](#) to scope).
35. Some local boards have previously expressed concerns around a lack of information and advice on local service and non-service properties, including how property classifications are changed. The draft framework is expected to include recommendations that may address these concerns, for example:
- clarifying whether properties are service, non-service, local and non-local to ensure that local boards are given clear advice and decision-making over optimisation opportunities
 - recommending a matrix team be established consisting of key property staff across council to present the full options to local boards for property optimisation options in their area.

Allocation of decision-making for economic development activities

36. Economic development activities currently delivered by TAU are being transferred to Auckland Council. There are no substantive changes proposed for the decision-making responsibility for these activities, as reflected in **Table Five**.
37. While the allocation of decision-making is not proposed to change, council will need to make additional decisions on economic development initiatives, for example in areas such as the Auckland Innovation Network and the Te Puna creative precinct. This change is intended to increase democratic accountability.

Table Five – Economic development decision-making (no new allocations, some minor changes proposed)

Governing Body decision-making	Local board decision-making
<ul style="list-style-type: none"> • Regional economic development strategy and Business Improvement District (BID) Policy • Auckland-wide and city centre economic development programmes and initiatives 	<ul style="list-style-type: none"> • Business improvement district (BID) programmes including establishment of new BIDs within parameters set by the BID Policy and recommending BID targeted rates to the Governing Body • Local economic development plans, projects and initiatives within parameters set by regional strategies, policies and plans

Business improvement district (BID) programmes

38. In relation to the BID Programmes, the BID Policy outlines key decision-making responsibilities that sit with local boards and expressly recognises that within Auckland

Council, local boards are the primary relationship lead with BID operating business associations. Other responsibilities that sit with local boards in relation to BIDs include:

- approval of the establishment of a new BID programme and boundary area
- approval of any changes or amendments to an existing BID programme boundary area
- annually recommending BID programme targeted rate grant amounts to the Governing Body
- recommending to the Governing Body proposed changes to a BID targeted rate mechanism.

39. Local boards may provide additional support to BID-operating business associations and BID programme delivery through their local board annual work programmes and budgets. In business districts or town centres that are not part of (or not big enough to form) a BID programme, some local boards actively partner with local businesses to develop or deliver initiatives that promote local economic development.

Local economic development plans and initiatives

40. In 2024, the reference to local economic development plans, projects and initiatives in the allocation table was removed from the allocation table after TAU funding for local economic development support ceased. The proposal to reinstate this in the allocation acknowledges that budget and resources support an activity rather than define its existence as a council function.
41. Local boards have in the past expressed interest in receiving greater support for developing and implementing local economic development initiatives in their areas. While there is currently no additional resource for local economic development activities, it is anticipated that local boards will continue to seek staff advice on these activities, and this will need to be addressed. Note that some local boards have funded economic brokers to deliver local economic development outcomes.

Clarifications around economic development in the allocation table

42. Staff also propose the following minor edits to the allocation table to bring it up to date with current policies, which are shown in **Attachment A**:
- removing reference to BID strategic direction in the allocation to local boards. The removal of this acknowledges that the business association is a membership based incorporated society in structure and it is the members of that society who set the strategic direction of the association and its activities. Council can advocate for a common strategic direction between the local BID programme and local board but is not the decision maker of the BIDs strategic direction.
 - removing reference to Auckland Economic Development Action Plan 2021-2024 and investment framework from the Governing Body's allocation because this action plan is out of date.
 - removing reference to regional business events, and branding and marketing for the city centre, metropolitan centres and spatial priority areas as set out in the Future Development Strategy from the allocation to Governing Body because these examples aren't reflective of current and planned activity delivered by the economic development function.

Other amendments to the allocation table

43. As shown in **Attachment A**, other changes to the allocation table are designed to enhance clarity. These include formatting changes that separate activities that have been, to date, clustered together in the allocation table e.g. separation of planning and development activities from economic development activities, creation of a facilities and asset management category/activity, incorporating the existing allocation of asset renewals and

upgrade responsibilities (currently at the end of the table) into the facilities and asset management section.

44. The changes also include new explanatory notes for new activities e.g. clarification of the purpose of the urban regeneration programme.

Tauākī whakaaweawe āhuarangi **Climate impact statement**

45. No climate impacts have been identified as a result of the changes proposed in this report.

Ngā whakaaweawe me ngā tirohanga a te rōpū Kaunihera **Council group impacts and views**

46. The transfer of urban regeneration, property management and economic development activities to Auckland Council will have a range of impacts on the Auckland Council Group. These include direct political direction to staff, improved integration of activities and outcomes and efficiency gains.
47. While there are no new resources or budgets proposed as a result of the transfer of these activities, it is likely that demand for advice and support may increase with direct political decision-making.
48. The Governing Body will make a decision on the proposed allocation of decision-making responsibility for the transferred Eke Panuku and TAU activities on 29 May 2025, and these will be reflected in the allocation table as part of Annual Plan 2025/2026.

Ngā whakaaweawe ā-rohe me ngā tirohanga a te poari ā-rohe **Local impacts and local board views**

49. Existing urban regeneration, property management and economic development activities are coming in house from 1 July. The major change local boards will see, is where staff come to them seeking approval of urban regeneration activities, rather than support, endorsement, or for information.
50. As noted elsewhere in this report, when existing urban regeneration programmes are completed, new programmes and activities will be considered. It is expected that local boards will have a greater role in decisions on those.
51. Greater clarity around property management decision-making will be provided in the Group Property Framework.
52. Local economic development remains under local board decision-making responsibility. Until additional resource and/or budget is provided advice on new local economic development activity will not be possible, unless local boards fund this themselves.
53. Changes to decision-making may result in increased local board member workloads, which will be assessed as activities are integrated into council.

Tauākī whakaaweawe Māori **Māori impact statement**

54. There are no specific Māori impacts identified with the proposals outlined in this report. Engagement with Māori in relation to urban regeneration, property management and economic development is expected to continue in line with current practices.

Ngā ritenga ā-pūtea **Financial implications**

55. No direct financial implications are anticipated from the reallocation of decisions to the Governing Body or local boards. Staff advice to support decision-making will continue, even

if the decision-maker changes (for example some decisions made by the Eke Panuku Board will now be made by local boards).

56. There will be financial implications if new urban regeneration or economic development programmes or projects are started. Local boards wishing to undertake new programmes or projects will need to fund them.
57. The financial implications of integration of urban regeneration, property management and economic development functions into council (for example the dis-establishment of Eke Panuku as an entity) are being addressed by other workstreams under in CCO Reform programme.

Ngā raru tūpono me ngā whakamaurutanga Risks and mitigations

58. The proposals in this report are intended to ensure a seamless transfer of urban regeneration, property management and economic development activities into council. Any issues that arise are not anticipated to be significant and will be addressed on a case-by-case basis.
59. With activities coming in house, political scrutiny and oversight may increase and create the need to change direction. This is considered to be more likely with new programmes than with current programmes but will need to be monitored and managed. This risk is balanced against the benefits of improved democratic accountability.
60. As outlined in this report, a number of decisions will need to be made as existing urban development programmes advance to a point where resources are freed up to develop new programmes. As part of this it is anticipated that a review of current decision-making will be undertaken to ensure particularly local boards have the right degree of decision-making over local programmes and associated budgets. Staff consider there is time to manage this change and in terms of the allocation of decision-making, any further change can be reflected in Annual Plan 2026/2027.
61. Some local boards may advocate for additional or new urban regeneration and/or economic development programmes in their areas. This may be reflected in local board plans which new local boards will develop post-Election 2025. A process to manage that will need to be established. Some local boards may also wish to fund such programmes to support commencement and resource needs will need to be carefully considered to respond to this.

Ngā koringa ā-muri Next steps

62. The Governing Body will make decisions on the allocation of decision-making responsibility on 29 May 2025. Local board feedback and resolutions will be reflected in the staff report. Any changes to the allocation table will be included in the Annual Plan 2025/2026, which is due to be adopted by the Governing Body on 26 June 2025.

Ngā tāpirihanga Attachments

No.	Title	Page
A⇒	Proposed changes to the allocation table of decision-making responsibilities of Auckland Council's Governing Body and local boards	
B⇒	Eke Panuku projects overview – as outlined in agreed local board engagement plan 2024-2025	

Ngā kaihaina Signatories

Authors	John Nash - Programme Manager Shirley Coutts - Principal Advisor - Governance Strategy
Authoriser	Lou-Ann Ballantyne - General Manager Governance and Engagement

Howick Local Board Grant Programme 2025/2026

File No.: CP2025/05108

Te take mō te pūrongo Purpose of the report

1. To adopt the Howick Grants Programme 2025/2026.

Whakarāpopototanga matua Executive summary

2. The Auckland Council Community Grants Policy guides the allocation of local, multi-board and regional grant programmes to groups and organisations delivering projects, activities and services that benefit Aucklanders.
3. The Community Grants Policy supports each local board to review and adopt their own local grants programme for the next financial year.
4. This report presents the Howick Grants Programme 2025/2026 for adoption (as provided in Attachment A to this report).

Ngā tūtohunga Recommendation/s

That the Howick Local Board:

- a) adopt the Howick Grants Programme 2025/2026 included as Attachment A to the agenda report.

Horopaki Context

5. The Auckland Council Community Grants Policy guides the allocation of local, multi-board and regional grant programmes to groups and organisations delivering projects, activities and services that benefit Aucklanders.
6. The Community Grants Policy supports each local board to review and adopt its own local grants programme for the next financial year. The local board grants programme guides community groups and individuals when making applications to the local board.
7. The local board community grants programme includes:
 - outcomes as identified in the local board plan
 - specific local board grant priorities
 - which grant types will operate, the number of grant rounds and opening and closing dates
 - any additional criteria or exclusions that will apply
 - other factors the local board consider to be significant to their decision-making.
8. Once the local board grants programme 2025/2026 has been adopted, the types of grants, grant rounds, criteria and eligibility will be advertised through an integrated communication and marketing approach which includes utilising the local board channels.

Tātaritanga me ngā tohutohu Analysis and advice

9. The aim of the local board grant programme is to deliver projects and activities which align with the outcomes identified in the local board plan. The new Howick Grants Programme has been workshopped with the local board and feedback incorporated into the grants programme for 2025/2026.

Tauākī whakaaweawe āhuarangi Climate impact statement

10. The local board grants programme aims to respond to Auckland Council's commitment to address climate change by providing grants to individuals and groups with projects that support community climate change action. Local board grants can contribute to climate action through the support of projects that address food production and food waste; alternative transport methods; community energy efficiency education and behaviour change; build community resilience and support tree planting.

Ngā whakaaweawe me ngā tirohanga a te rōpū Kaunihera Council group impacts and views

11. The grants programme has no identified impacts on council-controlled organisations and therefore their views are not required.
12. Based on the main focus of an application, a subject matter expert from the relevant Auckland Council unit will provide input and advice. The main focus of an application is identified as arts, community, events, sport and recreation, environment or heritage.

Ngā whakaaweawe ā-rohe me ngā tirohanga a te poari ā-rohe Local impacts and local board views

13. The grants programme has been developed by the local board to set the direction of its grants programme. This programme is reviewed on an annual basis.

Tauākī whakaaweawe Māori Māori impact statement

14. All grant programmes respond to Auckland Council's commitment to improving Māori wellbeing by providing grants to organisations delivering positive outcomes for Māori. Applicants are asked how their project aims to increase Māori outcomes in the application process.

Ngā ritenga ā-pūtea Financial implications

15. The allocation of grants to community groups is within the adopted Long-term Plan 2021 - 2031 and local board agreements.

Ngā raru tūpono me ngā whakamaurutanga Risks and mitigations

16. The allocation of grants occurs within the guidelines and criteria of the Community Grants Policy. Therefore, there is minimal risk associated with the adoption of the grants programme.

Ngā koringa ā-muri

Next steps

17. An implementation plan is underway, and the local board grants programme will be locally advertised through the local board and the council channels, including the council website, local board Facebook page and communication with past recipients of grants.

Ngā tāpirihanga

Attachments

No.	Title	Page
A	Howick Community Grant Programme 2025/2026	

Ngā kaihaina

Signatories

Author	Arna Casey - Grants Advisor
Authorisers	Pierre Fourie - Grants & Incentives Manager Victoria Villaraza - Local Area Manager

Howick Local Grant Round Two 2024/2025 grant allocations

File No.: CP2025/04724

Te take mō te pūrongo Purpose of the report

1. To provide the Howick Local Board with information on applications in Howick Local Grant round two 2024/2025; to enable a decision to fund, part fund or decline each application.

Whakarāpopototanga matua Executive summary

2. The Howick Local Board adopted the Howick Local Board Community Grants Programme 2024/2025 on 13 June 2024 (Attachment A). The document sets application guidelines for contestable grants.
3. This report presents applications received in Howick Local Grant round two 2024/2025 (Attachment B).
4. The local board has set a total community grants budget of \$439,716.00 for the 2024/2025 financial year.
5. For the 2024/2025 financial year, there are a total of two Local Grant rounds and two Quick Response rounds.
6. Forty-three applications have been received for the Howick Local Grant round one, requesting a total of \$361,531.93.

Ngā tūtohunga Recommendation/s

That the Howick Local Board:

- a) agree to fund, part-fund, or decline each application in Howick Local Grants round two 2024/2025 listed in the following table:

Table One: Howick Local Grant round two 2024/2025 grant applications

Application ID	Organisation	Main focus	Requesting funding for	Amount requested	Eligibility
LG2507-257	Action Education Incorporated	Community	Towards the cost of travel, administration, supervision, equipment and resources	\$5,000.00	Eligible
LG2507-239	Allegro Ice Dance Club Incorporated	Sport and recreation	Towards the cost of ice hire and coaching costs from the 3 June 2025 to the 29 July 2025	\$39,974.75	Eligible
LG2507-255	Amy Wang	Arts and culture	Towards the cost of advertising, instructor fees and venue hire at the Uxbridge	\$1,000.00	Eligible

Item 16

LG2507-245	Auckland East Chinese Society Incorporated	Arts and culture	Towards the cost of venue hire at St Johns and Pakuranga Community Hall, a new karaoke machine a new projector and an amplifier	\$8,385.76	Eligible
LG2507-263	Auckland Hockey Association Incorporated	Sport and recreation	Towards the cost of fence remeshing at Lloyd Elsmore Park Hockey Stadium	\$10,000.00	Ineligible
LG2507-208	Auckland Seniors Support And Caring Group Incorporated	Arts and culture	Towards the cost of venue hire	\$5,000.00	Ineligible
LG2507-261	Bhartiya Samaj Charitable Trust	Community	Towards the cost of venue hire, videography and photography	\$3,000.00	Ineligible
LG2507-234	Big Buddy Mentoring Trust	Community	Towards the cost of rent in Greenlane psychiatric assessments in Herne Bay, advertising costs and wages	\$5,000.00	Eligible
LG2507-247	BirdCare Aotearoa	Community	Towards the operational costs of Birdcare Aotearoa	\$6,390.00	Eligible
LG2507-258	Botany Chinese Association Incorporated	Sport and recreation	Towards the cost of venue hire at Te Tuhi, Glen House and Papakura Baptist Church from May 2025 to April 2026	\$14,144.00	Eligible
LG2507-266	Brain Play Limited	Community	Towards the cost of laptop hire and 3D printer hire	\$3,013.00	Eligible
LG2507-254	Business East Tamaki Incorporated	Events	Towards the cost of a speaker, transport costs, catering and venue hire at the Pakuranga United Rugby Club	\$9,865.00	Eligible

LG2507-250	Connect the Dots Charitable Trust	Community	Towards the cost of artist educator fees and art materials	\$6,839.73	Eligible
LG2507-256	Digital Seniors Limited	Community	Towards the cost of wages, advertising, coaching costs, hub costs, phone and wifi costs	\$10,000.00	Eligible
LG2507-202	East Skate Club Incorporated	Sport and recreation	Towards the cost of skate ramps	\$11,732.75	Ineligible
LG2507-210	Guardians of Our Children Charitable Trust	Community	Towards the operational costs of Guardians of our Children Charitable Trust	\$15,000.00	Eligible
LG2507-248	The Brain Injury Association (Auckland) Incorporated	Community	Towards operational costs for brain injury workshops	\$3,425.00	Eligible
LG2507-265	Howick Pakuranga Netball Centre Incorporated	Sport and recreation	Towards the cost of upgrading the audio sound system	\$9,493.85	Eligible
LG2507-241	Howick Squash Club Incorporated	Sport and recreation	Towards the cost of squash balls, squash ball box, soft grip box and squash rackets	\$5,040.00	Eligible
LG2507-206	Howick Village Association Incorporated	Community	Towards the cost of replacing three CCTV cameras	\$9,199.00	Ineligible
LG2507-262	iSpeak Trust Board	Community	Towards workshops costs and facilitator wages for the "Launch Pad" speaking skills project	\$5,800.00	Eligible
LG2507-212	Kila's Style Trust	Arts and culture	Towards operational costs for the "Dressed in Confidence" project including various salaries, administration costs, venue hire, cash, t-	\$10,000.00	Eligible

Item 16

			shirts, evaluations, reporting costs and catering costs		
LG2507-213	Kiwiora Community Trust	Community	Towards the cost of Thai, Indian, Japanese, Korean and Vietnamese cooking workshops	\$3,800.00	Eligible
LG2507-238	Life Education Trust Counties Manukau	Community	Towards the cost of programme delivery	\$10,000.00	Eligible
LG2507-270	LifeKids Trust	Community	Towards the cost of wages	\$10,000.00	Eligible
LG2507-209	New Zealand Multicultural Arts & Sports Centre Incorporated	Sport and recreation	Towards the cost of venue hire and tickets to the NBL	\$3,141.84	Eligible
LG2507-211	New Zealand Multicultural Arts Association Incorporated	Community	Towards the cost of rent, new sound equipment, musical instruments, music teacher fee and Microsoft Office Personal Edition	\$6,629.00	Eligible
LG2507-214	New Zealand Council of Victim Support Groups Incorporated	Community	Towards the operational costs of NZ Council of Victim Support Groups in Orminston Police Station	\$7,000.00	Ineligible
LG2507-264	Pakuranga Athletic Club Incorporated	Sport and recreation	Towards the cost of a water blaster and fence	\$7,690.00	Ineligible
LG2507-226	Pakuranga Chinese Association Incorporated	Community	Towards the cost of venue hire at Te Tuhi, Glen House and Pakuranga Leisure Centre	\$18,500.00	Eligible

LG2507-244	Pakuranga Tennis Club Incorporated	Sport and recreation	Towards the cost of rent	\$7,900.00	Eligible
LG2507-205	PHAB Association (Auckland) Incorporated	Community	Towards the cost of wages and taxi fares	\$5,000.00	Eligible
LG2507-246	Pregnancy Help Incorporated	Community	Towards the cost of rent at 10 Aylesbury Street inside Pakuranga Plaza	\$6,908.25	Eligible
LG2507-215	Re-Creators Charitable Trust	Community	Towards tutor costs	\$5,060.00	Eligible
LG2507-252	Roskill Together Trust	Environment	Towards the operating costs of the EcoPlay Challenge	\$9,990.00	Eligible
LG2507-236	Sowers Trust	Community	Towards salary costs	\$13,500.00	Eligible
LG2507-218	Special Olympics Howick-Pakuranga	Sport and recreation	Towards the cost of taxi fares	\$9,400.00	Eligible
LG2507-242	The Howick & Districts Historical Society Incorporated	Arts and culture	Towards payment cost to Tim Walker Associates for a new strategic plan	\$4,500.00	Eligible
LG2507-251	Korea-NZ Cultural Association	Arts and culture	Towards instructor fees, sewing kits, prep time, marketing and promotional costs	\$3,000.00	Eligible
LG2507-228	The Toy Library Howick and Pakuranga Incorporated	Community	Towards the cost of one years rent from July 2025 to June 2026	\$7,200.00	Eligible

LG2507-268	Tread Lightly Charitable Trust	Environment	Towards the cost of wages and towing costs for the Tread Lightly caravan	\$11,553.00	Eligible
LG2507-235	Warrior Wrestling Entertainment Limited	Events	Towards the cost of venue hire of the Michael Williams Sports Centre in Pakuranga, 400 chairs, production costs, videography and photography, graphic design costs and media campaign costs	\$3,457.00	Eligible
LG2507-253	Youthline Auckland Charitable Trust	Community	Towards the cost of volunteer clinical supervision and telecommunication costs	\$10,000.00	Eligible
Total				\$361,531.93	

Horopaki Context

7. The local board allocates grants to groups and organisations delivering projects, activities and services that benefit Aucklanders and contribute to the vision of being a world class city.
8. Auckland Council Community Grants Policy supports each local board to adopt a grants programme. The local board grants programme sets out:
 - local board priorities
 - higher priorities for funding
 - lower priorities for funding
 - exclusions
 - grant types, the number of grant rounds and when these will open and close
 - any additional accountability requirements.
9. The Howick Local Board adopted the Howick Local Board Community Grants Programme 2024/2025 on 13 June 2024 (Attachment A). The document sets application guidelines for contestable grants.
10. The community grant programmes have been extensively advertised through the council grants webpage, local board webpages, local board e-newsletters, Facebook pages, council publications, radio and community networks.

Tātaritanga me ngā tohutohu Analysis and advice

11. The aim of the local board grant programme is to deliver projects and activities which align with the outcomes identified in the Howick Local Board Plan. All applications have been assessed utilising the Community Grants Policy and the local board grant programme criteria. The eligibility of each application is identified in the report recommendations.

Tauākī whakaaweawe āhuarangi **Climate impact statement**

12. The Local Board Grants Programme aims to respond to Auckland Council's commitment to address climate change by providing grants to individuals and groups for projects that support and enable community climate action. Community climate action involves reducing or responding to climate change by local residents in a locally relevant way.
13. Local board grants can contribute to expanding climate action by supporting projects that reduce carbon emissions and increase community resilience to climate impacts. Examples of projects include local food production and food waste reduction; increasing access to single-occupancy transport options; home energy efficiency and community renewable energy generation; local tree planting and streamside revegetation; and educating about sustainable lifestyle choices that reduce carbon footprints.

Ngā whakaaweawe me ngā tirohanga a te rōpū Kaunihera **Council group impacts and views**

14. Based on the main focus of an application, a subject matter expert from the relevant department will provide input and advice. The main focus of an application is identified as arts, community, events, sport and recreation, environment or heritage.
15. The grants programme has no identified impacts on council-controlled organisations and therefore their views are not required.

Ngā whakaaweawe ā-rohe me ngā tirohanga a te poari ā-rohe **Local impacts and local board views**

16. Local boards are responsible for the decision-making and allocation of local board community grants. The Howick Local Board is required to fund, part-fund or decline these grant applications in accordance with its priorities identified in the local board grant programme.
17. The local board is requested to note that section 48 of the Community Grants Policy states; "We will also provide feedback to unsuccessful grant applicants about why they have been declined, so they will know what they can do to increase their chances of success next time".
18. A summary of each application received through the Howick Local Grants round two is provided (refer Attachment B).

Tauākī whakaaweawe Māori **Māori impact statement**

19. The local board grants programme aims to respond to Auckland Council's commitment to improving Māori wellbeing by providing grants to individuals and groups who deliver positive outcomes for Māori. Auckland Council's Māori Responsiveness Unit has provided input and support towards the development of the community grant processes.
20. Twenty-six applicants applying to the Howick Local Grant round two have indicated that their project targets Māori or contribute to Māori outcomes.

Ngā ritenga ā-pūtea **Financial implications**

21. The allocation of grants to community groups is within the adopted Long-term Plan 2021-2031 and local board agreements.
22. The local board has set a total community grants budget of \$439.716.00 for the 2024/2025 financial year.

23. On the 12 October 2024 a total of \$7,426.00 was taken from the Howick grants budget and reallocated to the Howick Village BID – implement broadening the Howick BID boundary (ID #3860). HW/2024/227
24. On the 12 December 2024 a total of \$7,436.00 was taken from the Howick grants budget and reallocated to the HVA's BID expansion project. HW/2024/227. This leaves a remaining amount of \$424,853.00
25. On the 17 October 2024 a total of \$160,472 was granted in the Local Grant round one.
26. On the 12 December 2024 a total of \$35,185 was granted in the Quick Response round one. This leaves a balance of \$229,197.00.
27. Forty-three applications have been received for the Howick Local Grant round one, requesting a total of \$361,531.93.
28. Relevant staff from Auckland Council's Finance Department have been fully involved in the development of all local board work programmes, including financial information in this report, and have not identified any financial implications.

Ngā raru tūpono me ngā whakamaurutanga Risks and mitigations

29. The allocation of grants occurs within the guidelines and criteria of the Community Grants Policy and the local board grants programme. The assessment process has identified a low risk associated with funding the applications in this round.

Ngā koringa ā-muri Next steps

30. Following the Howick Local Board allocation of funding for the Local Grant round two 2024/2025, Commercial and Finance staff will notify the applicants of the local board's decision.

Ngā tāpirihanga Attachments

No.	Title	Page
A⇒	Howick Community Grant Programme 2024/2025	
B⇒	Howick Local Grant round two - application summary	

Ngā kaihaina Signatories

Author	Arna Casey - Grants Advisor
Authorisers	Pierre Fourie - Grants & Incentives Manager Victoria Villaraza - Local Area Manager

Kōkiri: Local Board Transport Capital Fund Projects

File No.: CP2025/06687

Te take mō te pūrongo Purpose of the report

1. The purpose of this report is to seek decisions from Howick Local Board on:
 - which improvements for The Parade, Bucklands Beach it wishes to support to carry forward to scheme design and public consultation.
 - Depending on the outcome of the above, whether to pursue a pedestrian improvement on Tiraumea Drive.
 - How to allocate the cost savings identified in this report.

Whakarāpopototanga matua Executive summary

2. The Howick Local Board has been considering how to improve safety on The Parade, Bucklands over several years. The first stage of improvements was completed in 2024, and the local board is now invited to consider extending safety improvements with its local board transport fund.
3. During the local board workshop of 27 March 2025, Auckland Transport (AT) presented the concepts for Stage 2 The Parade along with refreshed pedestrian and vehicle counts and speeds.
4. We identified six areas for improvements:
 - Devon Road intersection (Site 1a and 1b),
 - #41 The Parade,
 - Wharf Road intersection
 - Whitcombe Road and
 - Laings Road intersection.
5. There was also a new site identified (Site New - #54 The Parade pram crossing), as requested by the local board.
6. AT presented the list of projects for Stage 2 with a priority based on the characteristics of each site such as: safety risk, pedestrian demand and desire line, project impact and value for money.
7. Auckland Transport is now seeking direction from the local board on which proposals the local board wishes Auckland Transport to develop further and take to public consultation.
8. The options are to either:
 - Deliver the two priority sites with the existing budget of \$155,319 and allocate the reserved funding of \$350,000 to deliver all the remaining improvement proposals for The Parade, Bucklands Beach.
 - Deliver the two priority sites with the existing budget of \$155,319, and allocate \$350,000 to the Tiraumea Drive project, which the local board identified as its next priority for local board transport capital funding.
9. In addition, Auckland Transport has identified cost savings from transport projects delivered for Howick Local Board as noted in Table 1. The local board is asked to consider allocating \$150,000 of the savings to a further project as outlined in the report.

Ngā tūtohunga Recommendation/s

That the Howick Local Board:

- a) tono / request Auckland Transport to:
- i) continue with the Site 1b - #23 The Parade crossing near Devon Road and Site 2 - #41 The Parade pram crossing with the remaining budget (\$155,319) for the Parade traffic calming project Stage 2 and/or
 - ii) allocate an additional \$350,000 to design and deliver the remaining sites of the Parade traffic calming project Stage 2:
 - A) Site New - #54 The Parade pram crossing - \$70,000.
 - B) Site 3 - Wharf Road intersection zebra and lighting - \$90,000.
 - C) Site 1a - Devon Road crossing - \$180,000.
 - D) Site 5 - Laings Road marking and splitter island - \$27,000.

or

- a) tono/ request, altern Auckland Transport to:
- i) continue with the Site 1b - #23 The Parade crossing near Devon Road and Site 2 - #41 The Parade pram crossing with the remaining budget (\$155,319) for the Parade traffic calming project Stage 2 and
 - ii) Allocates \$350,000 to a pedestrian facility on Tiraumea Drive, Pakuranga.
- b) toha / allocate the new cost savings of \$150,000 to:
- i) Cook Street (\$150,000 out of the \$200,000 estimate) pedestrian facility or
 - ii) Kilimanjaro Drive pedestrian improvements - Option 1: Pedestrian refuge island at the playground.

Horopaki Context

10. AT manages Auckland's transport network on behalf of Auckland Council. AT's Kōkiri Agreement provides a structured annual process for local boards to engage with and influence transport projects and programmes. Every year local boards and AT work together to set 'levels of engagement' for projects and programmes that AT is delivering. This process clearly defines the board's expectations and AT's responsibilities.
11. The levels of engagement noted in the Kōkiri Agreement are derived from the International Association for Public Participation's (IAP2) doctrine, were agreed between Auckland Council and Council Controlled Organisations in 2020; and are as follows:

Collaborate - AT and the local board are working together to deliver the project or programme. The local board leads the process of building community consensus. The local board's input and advice are used to formulate solutions and develop plans. Local board feedback is incorporated into the plan to the maximum extent possible. The engagement level for the local board transport capital projects is Collaborate.

Consult - AT leads the project or programme but works with the local board providing opportunities to input into the plan. If possible, AT incorporates the local board's feedback into the plan; and if it is not able to provides clear reasons for that decision.

Inform – AT leads the project or programme but works with the local board providing opportunities to input into the plan. If possible, AT incorporates the local board's feedback into the plan; and if it is not able to provides clear reasons for that decision.

12. The local board transport capital fund is an AT fund established in 2012 to allow local boards to deliver small projects in their local area that would not normally be prioritised by Auckland Transport.

Tātaritanga me ngā tohutohu

Analysis and advice

Howick Local Board Transport Capital Fund Projects

13. The local board has supported the projects in the table below with its funding allocation FY2024-2026. Cost savings made on the delivery of the projects are returned to the local board. The local board can consider through this report which additional projects it would like to support.

Table 1 – Resolved Local Board Transport Projects

Project Name	Resolved Funding and AT Approved Budget	Status	Cost Savings
Aviemore Drive to Botany Road Shared Path	\$508,727	Completed	
The Parade Traffic Calming and Pedestrian Improvements	\$601,350	Stage 1 Completed Stage 2 Awaiting decision	
Howick Bus Shelters	\$184,443	Completed	
6 Valederama Crossing	\$375,000	Complete	\$100,000
Michael Jones Drive traffic calming	\$370,000	Completed	\$110,000
Paparoa Road Crossing Upgrade	\$359,521	Completed	\$80,000
Gravel Paths	\$275,000	Completed	
Picton/Ridge Road Pedestrian Improvement	\$332,256	Completed	Final cost saving to be known at the end of April.
Bradbury Road traffic calming	\$360,528	Awaiting construction decision	
Kerrykeel Drive, safety improvements around Ormiston Schools	\$430,000	Scheme design being prepared, then AT design review and then public engagement.	
Flat Bush School Road pedestrian crossing	\$375,000	Scheme design being prepared, then AT design review and then public engagement.	
Sunnyview Avenue pedestrian facility	\$200,000	Concept for discussion with local board being prepared.	

Stannilands Pedestrian facility	\$180,523	Concept for discussion with local board being prepared.	
		Total Cost Savings	\$290,000

The Parade, Buckland Beach - Background

14. Historically, Howick Local Board has displayed a strong interest in improving The Parade, Bucklands Beach, with discussion starting in 2014.
15. Over the years, different proposals have been investigated, and public engagement undertaken. As feedback on these proposals was mixed, the local board did not pursue any significant changes to The Parade over that time.
16. However, Howick Local Board retained an interested in the project and in September 2020 requested by resolution that Auckland Transport look at delivering traffic calming and pedestrian safety measures on The Parade, Bucklands Beach.
17. The effects of Covid 19 on budgets, the elections of 2022 and the weather events of early 2023 reduced available budgets and it was not until October 2023 that The Parade Traffic Calming project was ready for delivery. After discussion with the local board, the project timeline was shifted to February 2024, to miss the busy summer period.
18. Delivery of the project was further delayed by Auckland Transport’s review in early 2024 of vertical displacement devices and the available budget for the project. After consideration, and discussion with the local board, the project was split into two stages – Stage 1 from Laings Road to Whitcombe Road with the rest of the proposals falling into Stage 2.
19. Stage 1 was finally delivered in September 2024 with the installation of a concrete raised pedestrian crossing near the Laings Road intersection, three speed humps between Laings Road and Whitcombe Road, new line marking and new street lighting.

The Parade, Bucklands Beach – Stage 2 (Collaborate)

20. During the local board workshop of 27 March 2025, AT presented the concepts for Stage 2 The Parade along with refreshed pedestrian and vehicle counts and speeds. (Please see Attachment A).
21. We identified five areas for improvements:
 - Devon Road intersection (Site 1a and 1b)
 - #41 The Parade
 - Wharf Road intersection
 - Whitcombe Road and
 - Laings Road intersection.
22. There was also a new site identified (Site New - #54 The Parade pram crossing) following the direction from the local board in the previous workshop of October 2024.
23. AT presented the list of projects for Stage 2 with a priority based on characteristics of each site such as safety risk, pedestrian demand and desire line, project impact and value for money.

Table 2 – The Parade Sites

Priority based on characteristics of sites only	Sites	Cost Estimates	Within Available Budget	Additional funding required to complete all sites	If \$350k reserved
High	Site 1b - #23 The Parade crossing near Devon Road	\$77,000	✓	\$418,681	✓
	Site 2 - #41 The Parade pram crossing	\$50,000	✓		✓
	Site New - #54 The Parade pram crossing	\$50,000 + \$20,000 design	✗		✓
	Site 3 - Wharf Road intersection zebra and lighting	\$90,000	✗		✓
	Site 1a - Devon Road crossing	\$180,000	✗		✓
Site 5 - Laings Road marking and splitter island	\$27,000	✗	✓		
Low	Site 4 - Whitcombe Road crossing	\$80,000	✗		✗

24. At the workshop, members noted the high pedestrian demand at the Devon Road/The Parade intersection where kerb buildouts on Devon Road and a central pedestrian refuge on the Parade are proposed (Site 1a and 1b). Note, that Site 1a has scored lower on Auckland Transport's priority list in comparison to the other sites due to the lower value for money and existing pram crossings at the intersection on Devon Road.
25. Moderate pedestrian demand was noted at #41 The Parade and side islands recommended here to provide crossing opportunity and to decrease crossing width along with a lighting review.
26. Moderate pedestrian demand was noted at Site New- #54 The Parade pram crossing, but it is lower than the previous identified sites for Stage 2. It was identified that a similar treatment to #41 The Parade and side islands is recommended subject to the investigation and design required for this new site.
27. At the Wharf Road/The Parade intersection, we proposed formalising the existing raised platform into a zebra crossing, including signage, marking, and improved lighting. This site had the highest pedestrian numbers from the survey, as it serves those accessing the shopping area and nearby council facilities.
28. Whitcombe Road intersection, showed a high pedestrian count but presented some challenges due to the presence of a corner driveway. As a side road with existing pram crossings and no recorded crashes or safety issues in the past five years, it scored lowest on Auckland Transport's priority list.
29. There was detailed discussion and questioning at the workshop of the extent of no parking lines at the Laings Road/The Parade intersection and the possible effects parking loss could have on speeds. Auckland Transport will undertake further reviews of the visibility requirements at this intersection, pending local board selection for delivery.
30. Auckland Transport is now seeking direction from the local board on which of the above proposals the local board wishes Auckland Transport to develop further and take to public consultation.

Funding for The Parade Stage 2

31. The total approved budget for The Parade project was \$601,350. To date \$446,031 has been expended, leaving an available budget of \$155,319.
32. The local board has reserved funding of \$350,000 from its local board transport capital budget (restored after the finalisation of the 2024-2034 Regional Land Transport Plan).
33. The local board can confirm which sites are to be prioritised with the remaining resolved budget (\$155,319) for this project. Currently this remaining budget can deliver the improvements at Site 1b - #23 The Parade crossing near Devon Road and Site 2 - #41 The Parade pram crossing.
34. The Board can choose any of these sites to proceed further.
 - Site New - #54 The Parade pram crossing - \$70,000.

- Site 3 - Wharf Road intersection zebra and lighting - \$90,000.
- Site 1a - Devon Road crossing - \$180,000.
- Site 5 - Laings Road marking and splitter island - \$27,000.

Tiraumea Drive

35. At its workshop on 28 November 2025, the local board considered a range of proposals for funding, see Attachment B. The local board selected the projects it wished to fund in priority order with Tiraumea Drive being the “contingency” project – see Resolution Number HW/2025/8.
36. AT’s recommendation is Option 1 below but If the local board resolves Option 2, this will allow the Tiraumea Drive project to proceed.

Recommendation – The Parade/Tiraumea Drive

37. **Option 1:** (Auckland Transport’s recommendation) To continue with the Site 1b - #23 The Parade crossing near Devon Road and Site 2 - #41 The Parade pram crossing with the remaining budget (\$155,319) for the Parade traffic calming project Stage 2.
38. And allocate additional \$350,000 to design and deliver the remaining sites of the Parade traffic calming project Stage 2:
 - Site New - #54 The Parade pram crossing - \$70,000.
 - Site 3 - Wharf Road intersection zebra and lighting - \$90,000.
 - Site 1a - Devon Road crossing - \$180,000.
 - Site 5 - Laings Road marking and splitter island - \$27,000.
39. As the designs for Stage 2 sites are now significantly progressed, these sites can be delivered more quickly compared to starting a new project from concept. Additionally, Stage 2 will complete the busiest section of the route along the beach frontage.
40. **Option 2:** - To continue with the Site 1b - #23 The Parade crossing near Devon Road and Site 2 - #41 The Parade pram crossing with the remaining budget of \$155,319.
41. This would leave \$350,000 to be allocated to Tiraumea Drive pedestrian improvements out of the estimated \$375,000 required budget. Tiraumea Drive was the local board’s second priority project noted at Resolution Number HW/2025/8.

New Cost Savings – Candidate Projects

42. As noted in Table 1, the total additional cost saving from the Howick projects delivered so far is \$290,000. Out of this, \$140,000 is currently on hold as reserved funds until cost estimates for the Kerrykeel Drive safety improvements around Ormiston Schools and the Stannilands pedestrian facilities are refined after the concept design stage. Therefore, the additional budget available to the local board to allocate to new or existing projects is \$150,000.
43. The local board can choose to allocate the budget to previously workshopped projects or resolve them in priority order as contingency projects. Further information on these projects is provided in Attachment B to this report.

Table 3 – Additional Proposals for Local Board Transport Capital Projects

Project	Address	Cost Estimate
Meadowland Drive Pedestrian Improvements	36 Meadowland Drive, Somerville	\$375,000
Cook Street pedestrian facility	Between Rodney Street and Gibraltar Street	\$200,000

<p>Kilimanjaro Drive pedestrian improvements. Option 1: Pedestrian refuge island at the playground - \$150,000. Option 2: 2 x pedestrian refuge islands on Kilimanjaro Dr- \$250,000</p>	<p>Kilimanjaro Drive near playground and near Millhouse intersection, Northpark</p>	<p>Option 1: \$150,000. Option 2: \$250,000</p>
<p>Priestley Drive Zebra Crossing</p>	<p>1 Priestley Drive, Bucklands Beach</p>	<p>\$250,000</p>

Recommendation – Cost Savings

44. AT’s recommendation is for the local board to allocate the funds to pedestrian facilities on either Kilimanjaro Drive or Cook Street as either of these projects can be funded with the cost savings of \$150,000 which is the available budget.

Climate impact statement

45. AT engages closely with the council on developing strategy, actions and measures to support the outcomes sought by the Auckland Plan 2050, the Auckland Climate Action Plan and the council’s priorities.
46. AT reviews the potential climate impacts of all projects and works hard to minimise carbon emissions. AT’s work programme is influenced by council direction through Te-Tāruke-ā-Tāwhiri: Auckland’s Climate Plan.

**Ngā whakaaweawe me ngā tirohanga a te rōpū Kaunihera
 Council group impacts and views**

47. The local board transport capital projects noted for decision do not impact on Council facilities.

Ngā whakaaweawe ā-rohe me ngā tirohanga a te poari ā-rohe

Local impacts and local board views

48. The Parade project was discussed at local board workshops on 31 October 2024 and again on 27 March workshop, 2025.
49. At the 31 October workshop, local board members asked for further traffic monitoring at several sites. The project team undertook the monitoring and reported back to the local board on 27 March 2025 as shown in Attachment A.
50. The local board agreed that the project should move forward to formal decision making so that the local board could decide which proposals it wished to continue to scheme design and public consultation.
51. Other candidates for local board funding were discussed with the local board at workshop on 28 November 2024. Please see Attachment B. At that workshop there was support Kilimanjaro Drive pedestrian facility (Option 1, by the playground) but only limited support for the Cook Street pedestrian facility.

Tauākī whakaaweawe Māori

Māori impact statement

52. Auckland Transport is committed to meeting its responsibilities under Te Tiriti o Waitangi and its broader legal obligations in being more responsible or effective to Māori.
53. AT’s Māori Responsiveness Plan outlines the commitment to 19 mana whenua tribes in delivering effective and well-designed transport policy and solutions for Auckland. We also

recognise mataawaka and their representative bodies and our desire to foster a relationship with them. This plan is available on the Auckland Transport website -

<https://at.govt.nz/about-us/transport-plans-strategies/maori-responsiveness-plan/#about>

54. In this case, neither decision involves a significant decision in relation to land or a body of water so specific Māori input was not sought.

Ngā ritenga ā-pūtea Financial implications

55. The local board transport capital project decisions in this report do have financial implications for the local board.
56. The local board has \$155,319 as remaining funds from The Parade traffic calming project and \$350,000 is in reserve until decisions on Stage 2 of The Parade are made. The local board will fully allocate its original local board transport capital fund by choosing either Option 1 or Option 2 for The Parade.
57. Cost savings achieved in delivery of the local board's programme has given the board an additional \$150,000, which it can allocate to a new project as outlined in Attachment B.

Ngā raru tūpono me ngā whakamaurutanga Risks and mitigations

58. The proposed decisions do have some risk, any construction project can be affected by a range of factors including weather, contract availability or discovery of previously un-identified factors like unmapped infrastructure.
59. The costs outlined in Attachment A and Attachment B are indicative costings and selected projects may cost more or less than the amount indicated. Once projects are selected, further investigation will confirm project costings.
60. AT manages risk by retaining a 10% contingency on the projects and historically there are several occasions in the organisation has used budget surpluses in other programmes to support delivery of the LBTCF. However, there is always a small risk that more money may be required from the LBTCF.

Ngā koringa ā-muri Next steps

61. The following activities or actions are planned:
- If the Howick Local Board resolves to support proposals for The Parade, Bucklands Beach, Auckland Transport will further develop to scheme design and then move to public consultation.
 - If the Howick Local Board resolves to allocate funds to the Tiraumea Drive project, Auckland Transport will begin initial design investigations and then report back to the local board.
 - If the Howick Local Board resolves to allocate money to either Kilimanjaro Drive or Cook Street pedestrian facilities, Auckland Transport will present concepts to the local board for approval before moving to public engagement.

Ngā tāpirihanga Attachments

No.	Title	Page
A⇒	17 April 2025, Howick Local Board - Kōkiri: Local Board Transport Capital Fund Projects - LBTCF 2023-26	

No.	Title	Page
B⇒	17 April 2025, Howick Local Board - Kōkiri: Local Board Transport Capital Fund Projects - Stage 2 - The Parade, Bucklands Beach	

Ngā kaihaina Signatories

Author	Lorna Stewart - Elected Member Relationship Partner
Authoriser	John Gillespie - Head of Stakeholder and Community Engagement

Howick Play Plan 2025

File No.: CP2025/06749

Te take mō te pūrongo

Purpose of the report

1. To adopt the Howick Play Plan 2025, which provides guidance on emerging play issues and opportunities for non-playground play projects.

Whakarāpopototanga matua

Executive summary

2. The Howick Play Plan 2025 provides Howick Local Board with general information and specific project suggestions to increase the range of play opportunities it offers.
3. The play plan has been developed with community and council staff guidance. The local board has provided feedback on earlier drafts of the document. The final version of the Howick Play Plan 2025 is now offered to the local board for adoption.
4. A Supplementary Information document has also been provided. It includes relevant demographic information for the local board area, and insights from Regional Sports Trusts and the council's Advisory Panels. This information has informed the advice staff provide to Howick Local Board regarding play.
5. The play plan does not commit the local board to funding any particular play project. Instead, it will serve as a tool to support work programme planning each year.
6. The report recommends that Howick Local Board adopt the Howick Play Plan 2025 and use it as a resource for the future development of play.

Ngā tūtohunga

Recommendation/s

That the Howick Local Board:

- a) whai / adopt the Howick Play Plan 2025 set out in Attachment A to this report.

Horopaki

Context

7. Auckland Council's play advocacy function promotes play opportunities beyond investment in traditional playgrounds, with play regarded as 'an everywhere activity'.
8. The play advocacy approach complements local boards' capital investments in play. It does not however replace the ongoing need for investment in the design and maintenance of playgrounds.
9. Staff engaged with Howick Local Board at various workshops in 2023 and 2024. A play advocacy activity was included in the local board's annual work programme in the 2023/2024 and the 2024/2025 financial years. In the 2024/2025 financial year a budget of \$20,000 was allocated.
10. In the 2023/2024 work programme, staff committed to delivering a 'play plan' for Howick Local Board. This document provides advice on how play outcomes can be achieved with operational expenditure (OPEX) funding. It also provides guidance on relevant play issues that the local board might like to consider.

11. A draft version of the Howick Play Plan 2025 was discussed with the local board at a workshop in November 2024. Elected member feedback was incorporated into the final draft, which was circulated to the local board for any additional feedback. No further comments were received, and staff are now seeking adoption of the plan on Attachment A.

Tātaritanga me ngā tohutohu Analysis and advice

Item 18

12. The Howick Play Plan 2025 ('the play plan') is aligned with the Howick Local Board Plan 2023. It is intended to be a live document for the life of the local board plan. The play plan will be revised throughout the 2026 – 2029 term of the local board.
13. The play plan complements previous staff advice about play and other council work programmes that provide play outcomes. This includes play provision assessments and play network gap analyses completed by the Specialist Operations team, and the activation programme delivered by the Out and About Auckland team.
14. The play plan highlights the need to engage effectively with rangatahi regarding play. The gap in play provision for rangatahi is well known across Tāmaki Makaurau, and the play plan offers suggestions about how this can be addressed through both operational (OPEX) and capital (CAPEX) investment.
15. Accessible play is a growing focus within the play sector. The play plan provides guidance to Howick Local Board about the different needs of tamariki with invisible and visible disabilities. It also discusses ways that the council can address these groups' play requirements.
16. All-ages play is also a topic of interest to most local boards. The play plan addresses this by highlighting opportunities for intergenerational play. It also advocates for greater engagement with rangatahi to learn more about this demographic's play interests. It provides some suggestions for ways to better provide play for rangatahi and adults in formal play spaces.
17. The play plan presents elected members with specific project ideas to increase play provision across Howick, and suggestions of local board advocacy for broader play outcomes. The project suggestions are indicative only and do not commit the local board to funding any particular project. Language has been added to the play plan to this effect.
18. In response to feedback from a range of local boards, all play plans have been revised as follows:
 - a Chair's Message has been included at the beginning of the document
 - operational details such as proposed project costs have been removed, to better reflect the strategic nature of the play plan and the local board's governance-level decision-making role
 - a page has been inserted to acknowledge the opportunity for play to support the wellbeing of older adults
 - the document has been divided into two separate parts: the Howick Play Plan 2025, Attachment A, which is action-focused; and the Howick Play Plan 2025 Supplementary Information document, Attachment B, which includes supporting insights and other reference materials.
19. Staff will use the play plan to inform discussions during work programme development. Each year, the local board may choose to allocate a budget toward play through its annual work programme development process.

Tauākī whakaaweawe āhuarangi **Climate impact statement**

20. The play advocacy approach has an enduring positive climate impact. It encourages whānau to embrace their streets, local parks and public spaces as sites for play. This reduces the need to drive to playgrounds

Ngā whakaaweawe me ngā tirohanga a te rōpū Kaunihera **Council group impacts and views**

21. The play plan has been written with input from the council's Activation and Events teams within the Community Wellbeing department. Further review and feedback has been provided by staff in the Pools and Leisure and the Parks and Community Facilities departments.
22. The play plan highlights the value of integrating play into other council work programmes, and in the work of Council-Controlled Organisations like Auckland Transport and Watercare.
23. The Supplementary Information document includes insights from the council's various Advisory Panels, which each represent different groups in the community. Staff engaged directly with the Advisory Panels and sought their feedback regarding play issues relevant to them.

Ngā whakaaweawe ā-rohe me ngā tirohanga a te poari ā-rohe **Local impacts and local board views**

24. Play is of perennial interest to the wider community, with most families aware of its benefit to their tamariki. As freedom to roam and play without adult supervision has declined for tamariki in Tāmaki Makaurau during the past three decades, there has been growing pressure on the council to build and maintain playgrounds. The play advocacy approach, as set out in the play plan, both acknowledges the importance of playgrounds, and offers other ways to provide opportunities to play.
25. Tāmaki Makaurau's four Regional Sports Trusts have the capacity to engage directly with tamariki in a school setting, and the Play Leads at each Regional Sports Trust have done so at several primary schools. The insights gathered have informed staff advice to Howick Local Board about how to provide play beyond a playground setting. In particular, tamariki voice has identified a widespread appetite for more adventurous play.
26. The Supplementary Information document contains demographic information from the 2023 Census, highlighting changing ethnic demographics in Howick. Analysis of the local board's demographic data has contributed to staff advice to Howick Local Board.

Tauākī whakaaweawe Māori **Māori impact statement**

27. The play plan references the Māori outcomes identified in the Howick Local Board Plan 2023. It highlights several ways that play can support Māori outcomes, including:
 - using Te Aranga Māori Design principles in the design of playgrounds, to communicate iwi narratives through colour choices, cultural motifs, and other elements
 - developing and installing māra hūpara – Māori playgrounds that draw on pre-colonial play traditions from local iwi
 - exploring ways that the Te Kete Rukuruku dual naming project could create opportunities for playful interpretation of the narratives behind gifted te reo names
 - providing Māori play activations through the Out and About Auckland programme.

28. The play plan acknowledges the importance of taking an iwi-led approach for any play provision that is aligned with Māori outcomes.

Ngā ritenga ā-pūtea Financial implications

29. Although the play plan includes potential play projects, it is not a prescriptive document and does not commit the local board to funding any of the projects. Language has been included in the play plan to make this clear to all readers.

Ngā raru tūpono me ngā whakamaurutanga Risks and mitigations

30. The following table identifies risks associated with Howick Local Board adopting its play plan and sets out appropriate mitigation measures.

Risk	Mitigation
Adopting the play plan raises community expectations regarding investment in new play projects	Language within the play plan to emphasise the non-prescriptive nature of the document and its purpose as a guide for potential play investment only
Adopting the play plan results in concern from the community that investment in CAPEX play will not continue	Language within the play plan to confirm that non-playground play is intended to complement and not replace wider investment in play assets

Ngā koringa ā-muri Next steps

31. Staff will participate in annual work programme planning, drawing on the play plan to advise the local board of project opportunities.
32. The Howick Play Plan 2025 will be revised on a three-year basis, to ensure it remains aligned with the Howick Local Board's local board plan.

Ngā tāpirihanga Attachments

No.	Title	Page
A⇒	Howick Play Plan 2025	
B⇒	Howick Play Plan 2025 Supplementary Information	

Ngā kaihaina Signatories

Author	Jacquelyn Collins - Play Portfolio Lead
Authorisers	Pippa Sommerville - Manager Sport & Recreation Victoria Villaraza - Local Area Manager

Howick Local Board views on the draft Contributions Policy 2025

File No.: CP2025/04910

Item 19

Te take mō te pūrongo

Purpose of the report

1. To invite local board views on the draft Contributions Policy 2025 for inclusion in the Governing Body decision report on 1 May 2025

Whakarāpopototanga matua

Executive summary

2. The most-recent full review of the contributions policy, was completed and adopted in December 2021, based on the investments in the Long-term Plan 2021-2031. This was operational from 10 January 2022.
3. In April 2023, the Governing Body adopted the Contributions Policy 2022 Variation A which added investments over a 30-year period to support growth in Drury.
4. In June 2024, the council adopted its new Long-term Plan 2024-2034, which sets out capital expenditure plans for this period. The Contributions Policy 2025 now proposed for adoption reflects these decisions.
5. The draft Contributions Policy 2025 also includes investments over a longer time horizon for the Inner Northwest, and Auckland Housing Programme (AHPs) and to update the investments to be made in Drury beyond 2031. This follows through on the agreement in principle from December 2021 (FIN/2021/119) and subsequent noting in April 2023 (GB/2023/63).
6. The remaining Investment Priority Area (IPA), the City Centre/City Rail Link (CRL) stations, will be added as a next step later in 2025/early 2026 as more information becomes available, also in this timeframe updates will be made for additional investments in Drury West, and stormwater in Mt Roskill and Māngere.
7. The Governing Body approved consultation on the draft Contributions Policy 2025 in September 2024 and consultation took place from September to December 2024.
8. A memorandum and summary of feedback received from consultation was circulated to all local board and Governing Body members in February 2025. These are attached to this report as Attachment F.
9. This was followed up with Subject Matter Expert (SME) attendance at local board workshops as requested by individual local boards.
10. Any local board views agreed through this report will form an attachment to the decision-making report being presented to Governing Body on 1 May 2025.

Ngā tūhunga

Recommendation/s

That the Howick Local Board:

- a) tuku / provide views on the draft Contributions Policy 2025 for inclusion in the Governing Body decision report on 1 May 2025.

Horopaki Context

11. Development contributions (DCs) allow for an equitable and proportionate share of the total cost of growth-related capital expenditure to be recovered from the development community. The Contributions Policy sets out how the council will recover from new development an appropriate and fair share of the cost of infrastructure investment attributable to growth.
12. Auckland's population has grown substantially over the 12 years to the end of 2024, from 1.4 million to over 1.8 million at an average of 1.4 per cent annually. It is forecast to continue to grow, with approximately 200,000 more Aucklanders expected by 2034. The population is expected to grow by a further 400,000 by 2054¹.
13. To support the development enabled by the Auckland Unitary Plan, we are facing both immediate and longer-term demands for infrastructure in growth areas. If we do not adequately plan for the delivery and funding of this infrastructure, the cumulative effects of this development could lead to an unfair rates burden on future ratepayers or a risk of infrastructure shortfalls for future residents.
14. Auckland Council's current contributions policy was introduced in January 2022 and later updated from June 2023 to extend cost recovery in Drury over a 30-year period instead of the previous 10-year approach.
15. Between September and November 2024, the council consulted on a proposal to adopt a new policy that incorporates updated capital expenditure from the Long-term Plan 2024-2034, revised growth and interest rate forecasts, adjustments to project costs, and extended investment planning for Drury.
16. The proposed policy also expands the 30-year cost recovery model to other Investment Priority Areas, including the Inner Northwest (Red Hills, Westgate, and Whenuapai) and Auckland Housing Programme (AHP) areas in Tāmaki, Māngere, and Mt Roskill. In addition, several smaller adjustments aim to ensure fairer cost distribution between ratepayers and developers.
17. The policy proposed for consultation included \$10.3 billion in growth-related capital investment in the period to 2034, increasing the average development contribution from \$21,000 to \$30,000, while contributions in Drury would rise from \$70,000 to \$83,000. The proposed policy also provided for \$10.9 billion of investment in Drury, Inner Northwest, and the AHP areas in the period beyond 2034. With these investments included the average DC price across the region would rise to \$50,000. Different charges apply to different geographical areas based on the relevant activity funding areas in the proposal.
18. The Consultation Document (CD) provided to support consultation set out the key issues to be considered in assessing the proposal. The CD can be found at Attachment C. The key changes set out in consultation are summarised below.

Update for decisions in the LTP 2024-2034 and updates to Drury

19. The draft Contributions Policy 2025 that was consulted on updated the capital expenditure projects to reflect the decisions made since 2021 and the associated investment planned over the 10-year timeframe of the LTP.
20. The key changes include:
 - Level crossings – Takanini (\$550 million)
 - Development of new town square in Henderson (\$12.5 million)
 - Waterview catchment separation (\$59 million) – updated costs.

¹ The current population estimate is based on the most recent population estimates from StatsNZ. The post-covid period has been one of particularly high volatility with growth exceeding expectations. Future forecasts are based on the current 'most likely' Auckland growth scenario, AGSv1.1. These figures are the central scenario noting that the low and high are +/- 300,000 either side.

21. The current contributions policy included projects which are now funded as part of the NZ Upgrade Programme. Government decisions on the NZ Upgrade Programme had not been made at the time the Contributions Policy 2022 Variation A was adopted. We are now removing these projects from the policy as they are not expected to require council funding and there is no basis to recover any costs for them. Contributions collected for these projects to date will be re-allocated against similar projects within the same funding area.
22. The assessment of requirements for stormwater infrastructure in Drury has now been completed. This identified one project the council would need to deliver in addition to those that would be provided by developers as a condition of resource consent, and this has been included in the draft policy. Some adjustments have now also been made to the timing of projects including reducing investment and deferral of the timing of open space acquisitions. The assumptions made for investments in Drury over the longer horizon have also been reviewed based on the latest available information and the capital expenditure included in the policy has been updated. This includes updated land cost assumptions, alignment with the Cost Estimation guide published by Auckland Transport, and the latest growth forecasts. These changes raised the DC price for Drury that was consulted on from \$70,000 to \$83,000.
23. The draft policy will include a list of over 1,700 programmes and projects for which the council will seek to recover the growth share of costs through development contributions (see Attachment B).
24. The table below shows the total investments with a growth component in transport, stormwater, reserves, and community facilities over the LTP period and their funding source in the CD. In this analysis and that which follows later it is assumed that National Land Transport Fund from Waka Kotahi will fund 51 per cent funding of qualifying transport projects.

Funding source	CAPEX investment type \$ millions				
	Transport	Reserves	Community spaces	Stormwater	Total funding
Total NZTA/Waka Kotahi	3,569	0	0	0	3,569
Total rates	3,072	557	301	463	4,393
Total development contributions	893	1,005	127	309	2,334
Total CAPEX	7,534	1,562	428	772	10,296

25. As a result of the capital expenditure changes in the period to 2034, updated forecasts of NZTA/Waka Kotahi funding and dwelling construction, and adjustments to the investments in Drury before and after 2034 the weighted average development contributions price for a standard residential unit would rise from \$21,000 under the Contributions Policy 2022, Variation A to \$30,000 under the draft Contributions Policy 2025. The average price increase is driven by the increased level of investment within the LTP period in the Investment Priority Areas (IPA). This is a weighted average and varies widely by location depending on the investments the council plans to make to support growth in each area.

Inclusion of investments in IPA areas beyond 2034

26. The consultation proposed the addition of investments beyond 2034 to support growth in the IPA areas. The proposed investments and consequent changes to DC prices for each of the IPA areas is set out below.

Inner Northwest

27. The LTP provides for investment of \$155 million in transport and \$139 million in reserves between 2024 and 2034. The table below shows the investments with a growth component in transport, reserves, and community facilities beyond 2034 and their funding sources. No stormwater investment is required by the council as the nature of infrastructure needed in

this area is such that it is expected to be delivered by developers as a condition of resource consent.

Total investments and funding source by activity in the Inner Northwest over a longer horizon \$ millions			
Funding source	Transport	Reserves	Community facilities
Total NZTA/Waka Kotahi	1,142	0	0
Total rates	558	118	82
Total development contributions	1,366	903	133
Total CAPEX	3,066	1,021	215

28. The additional funding requirement would increase the contributions price for the Inner Northwest from an average of \$25,167 per household unit equivalent (HUE) to an average of around \$98,000 per HUE when the investments beyond 2034 are added. Different charges apply to different geographical areas based on the relevant activity funding areas in the proposal. The proposed charges are set out in the table below.

Changes to funding area charges in the Inner Northwest over a longer horizon				
Funding area	Current DC charge	Proposed DC for investments within the LTP period incl regional and sub-regional DCs	Proposed DC price for investments beyond LTP	Total proposed price including all investments incl regional and sub-regional DCs
Whenuapai	\$25k	\$27k	\$75k	\$102k
Redhills	\$25k	\$27k	\$62k	\$89k
Westgate	\$23k	\$34k	\$61k	\$95k

Māngere Auckland Housing Programme area

29. The LTP provides for investment of \$46 million in transport and \$23 million in reserves between 2024 and 2034. The table below shows the transport investments with a growth component beyond 2034 and their funding sources. Investments in stormwater infrastructure will be added in 2025 once further work is completed.

Total investments and funding source by activity in Māngere over a longer horizon \$ millions			
Funding source	Transport	Reserves	Community facilities
Total NZTA/Waka Kotahi	292	0	0
Total rates	531	0	0
Total development contributions	89	0	0
Total CAPEX	912	0	0

30. The additional funding requirement would increase the contributions price for the Māngere Auckland Housing Programme from an average of \$18,123 per HUE to an average of around \$29,000 per HUE when the investments beyond 2034 are added.

Mt Roskill Auckland Housing Programme area

31. The LTP provides for investment of \$44 million in transport and \$15 million in reserves between 2024 and 2034. The table below shows the transport investments with a growth component beyond 2034 and their funding sources. Investments in stormwater infrastructure will be added in 2025 once further work is completed.

Total investments and funding source by activity in Mt Roskill over a longer horizon \$ millions			
Funding source	Transport	Reserves	Community facilities
Total NZTA/Waka Kotahi	594	0	0
Total rates	677	0	0
Total development contributions	344	0	0
Total CAPEX	1,615	0	0

32. The additional funding requirement would increase the contributions price for the Mt Roskill from an average of \$20,406, per HUE to an average of around \$52,000 per HUE when the investments beyond 2034 are added. Different charges may apply depending on the combination of activity funding areas a development falls within. The primary driver of the higher DCs in the above range is the recovery of historic stormwater investments in the Inner West Triangle and the Waitemata Central funding areas.

Tāmaki Regeneration area

33. The LTP provides for investment of \$76 million in transport, \$67 million in stormwater, \$87 million in reserves, and \$1 million in community facilities between 2024 and 2034. The table below shows the investments with a growth component in transport, community facilities and stormwater beyond 2034 and their funding sources.

Total investments and funding source by activity in Tāmaki over a longer horizon \$ millions				
Funding source	Transport	Reserves	Community facilities	Stormwater
Total NZTA/Waka Kotahi	181	0	0	0
Total rates	194	0	41	18
Total development contributions	171	0	19	788
Total CAPEX	546	0	60	806

34. The standard of service for stormwater in Tāmaki has been planned to deliver the same level of service as in the Inner Northwest and Drury. This is higher than the service level presently provided by historical investment in the other brownfields areas that aren't expected to develop. Accordingly, the scale of and cost of the investment required to redevelop the area is substantial.
35. The additional funding requirement would increase the contributions price for Tāmaki from \$31,157 per HUE to \$119,114 per HUE when the investments beyond 2034 are added.

Other proposed changes to the policy

Funding areas

36. Changes were proposed to funding areas to provide a more refined allocation of costs to development areas to better reflect beneficiaries of the planned infrastructure. The new proposed funding areas include:
 - new sub-regional funding areas at Paerata, Whau, Inner Northwest
 - a new local funding area at Avondale.
37. Changes to neighbouring funding areas were proposed to accommodate these new areas.
38. A number of other refinements were proposed to local and sub-regional funding areas to better reflect the beneficiaries of infrastructure. Details of these changes are included in Attachment E: Funding area maps.

Other changes

39. Some technical changes were proposed to the policy to clarify its intent and ensure fairness. Changes were highlighted in the draft policy in Attachment A.
40. Aside from the proposed changes discussed, the Contributions Policy 2022, Variation A was recommended as appropriate and fit for purpose and it was proposed to continue the unamended provisions in the current policy into the new policy.

Tātaritanga me ngā tohutohu

Analysis and advice

41. Key issues addressed in the CD related to the uncertainty inherent in taking a 30-year view of growth and the infrastructure investment required to support that along with the impact that higher DCs would have on current landowners planning to develop and whether higher DCs would impact on house prices. Key points made in the advice that supported the adoption of the draft policy for consultation on these issues is set out below. Further advice on these matters and other issues raised in consultation will form part of the advice to the council on 1 May.
42. The uncertainty associated with long-term planning is managed through the three-yearly review of our infrastructure planning priorities and funding through the council's LTP. This allows the council to manage the risk of the pace of growth changing from our forecasts and consequent changes in the required infrastructure.
43. Continuing with a 10-year focus would continue the uncertainty for developers, landowners, and other infrastructure providers. It would also make it difficult to recover a fair share of the funding of expected capital expenditure in years 11-30 from early developers to address the longer-term cumulative impacts of their development. This would risk development occurring without adequate infrastructure and place more demand on future ratepayers.
44. These changes will not materially impact on house prices, which are driven by supply and demand and are not determined via a cost-plus methodology. That is, the developers are price takers. Their market power is limited, given they are part of a larger market, and their products are substitutable for near equivalents. Higher DC prices will eventually flow through to lower prices for raw land as the cost of enabling infrastructure is capitalised into the land value. However, they may have a short-term negative impact on the pace of development as developers respond to the change. Developers must absorb the cost into a lower land value. Depending on their financial position, they may either proceed with development, defer development and hold the land awaiting future value uplift, or on-sell the land to another developer. Staff consider that these short-term effects are outweighed by better cost signalling and associated longer-term benefits.
45. As these investments are being planned over decades, they are subject to refinement as investment plans are developed further, development intentions change, and economic conditions fluctuate. Future contributions policies will be updated as more refined information becomes available.

Consultation

46. Public consultation ran from 30 September to December 2024, featuring webinars, in-person events, and an opportunity for submitters to present directly to councillors.
47. Materials released to support consultation included the following documents attached to this report:
 - Attachment A: Draft Development Contributions Policy 2025
 - Attachment B: Schedule 8 Assets for which development contributions (DCs) will be used
 - Attachment C: Consultation Document - Contributions Policy 2025
 - Attachment D: How we set Development Contributions – Cost Allocation Methodology
 - Attachment E: Funding area maps.

Feedback received

48. A total of 147 submissions were received, including 46 from organisations.
49. Key concerns raised included the impact of higher contributions on house prices and development, uncertainty around 30-year planning and cost escalation, the scale of stormwater investment in Tāmaki, delays in infrastructure investment, consideration of alternative funding sources, transparency of information, and specific issues with funding areas and projects.
50. A full analysis of the feedback can be found in Attachment F.

Updates for Final Policy for Adoption

51. Officers are analysing the points raised in the submissions. Advice on these points and further analysis conducted since the consultation process, including updated growth and economic forecasts, will be incorporated in advice to the Governing Body for decision making, planned for 1 May 2025. Potential changes to the proposed policy will also be presented at that time.
52. The Government has announced intended reforms to infrastructure funding and financing as part of the Going for Housing Growth policy program. The reforms are planned for implementation alongside council long-term plans in 2027. The exact form the reforms take will only be confirmed once legislation has passed. Staff consider that the Contributions Policy will still be required for at least the next two years and the council should continue with the updates and improvements proposed.

Tauākī whakaaweawe āhuarangi **Climate impact statement**

53. Planning now for the funding of investments to support growth in the IPAs will ensure that the council is better able to deliver the infrastructure required for development in the IPAs to manage climate impacts of development and to connect to the rest of the city with a reduced climate impact. The proposal provides for early developers to meet a share of the costs of the infrastructure they will benefit from and create the need for, to address the cumulative impacts of growth.
54. If plans for securing a share of funding with DCs from early developers aren't made now, greater demands will fall on future ratepayers to deliver this infrastructure. While adjustments can be made to the DC policy in the future these can't retrospectively secure revenue from early developers. General rates are the only practical alternative funding source to make up this shortfall. Given the competing demands on general rates there is a real risk that all the funding required won't be available in the future. This will mean the council won't be able to deliver the level of investment required, leading to a greater negative climate impact.

Ngā whakaaweawe me ngā tirohanga a te rōpū Kaunihera Council group impacts and views

55. The information prepared for consultation on the draft Contributions Policy 2025 was developed in conjunction with the following council-controlled organisations and council units:
- Auckland Transport
 - Public Law
 - Policy
 - Planning and Resource Consents
 - Eke Panuku Development Auckland
 - Healthy Waters and Flood Resilience
 - Service Strategy and Partnerships
 - Chief Economist Unit
 - Spatial Analysis and Modelling.

Ngā whakaaweawe ā-rohe me ngā tirohanga a te poari ā-rohe Local impacts and local board views

56. The DC price varies by location depending on the cost of infrastructure required to support development in an area. These locations do not usually align to local board areas.
57. A local board briefing session was held on 30 September 2024 to brief members on this topic. Local boards have received a memorandum to update them on the review of the contributions policy and the feedback from public consultation. 18 local boards accepted an offer for workshop briefing sessions which were held in March. The purpose of this report is to seek local board views.

Tauākī whakaaweawe Māori Māori impact statement

58. Development contributions are assessed against the demand that different types of development generate on council infrastructure. Māori developments are assessed under broader development types based on the demand they generate. For example, kaumātua housing is treated the same as retirement villages, and marae are considered under community facilities.
59. Iwi authorities with mana whenua interests were contacted prior to the start of consultation to seek expressions of interest in discussing and providing feedback on the proposed changes. All iwi authorities were also notified when consultation opened, further advising of how they could have their say. The Mana Whenua forum and other council forums were advised of the consultation.
60. Seven submitters on the proposal identified as Māori. One response supported the proposed changes to update the policy for changes to the LTP and to reflect growth beyond 2034 in the IPA areas and four were opposed. In regard to the changes to Drury and the other changes proposed two were in favour and two against. The only comment received was that new development needs to be fully funded by developers.

Ngā ritenga ā-pūtea Financial implications

61. The Long-term Plan 2024-2034 assumes DCs revenue of \$2.0 billion over the LTP period. After completing the analysis of the cost of investments in the LTP that can be recovered with DCs and the impact of the proposed policy changes, it was estimated that the revenue

would be \$2.6 billion. The achievement of this revised revenue forecast requires, as a first step, the implementation of a contributions policy updated for the capital expenditure decisions in the LTP, and the other changes proposed in this report.

Ngā raru tūpono me ngā whakamaurutanga Risks and mitigations

62. Forecasting long-term growth, infrastructure investment, and development contributions (DCs) carries risks, but these can be managed through the triennial long-term plans, policy adjustments, and reallocation or refunds of DCs if planned assets are not delivered.
63. There is a risk that projected development and DC revenue may not be met, which will be managed by monitoring consent applications and DC revenue.
64. The council ensures its contributions policy complies with legislation, but given the proposed increases in DCs, some developers may challenge the policy.

Ngā koringa ā-muri Next steps

65. The Governing Body will consider the feedback and updates to the proposed policy and make a decision on the final policy adoption on 1 May 2025.

Ngā tāpirihanga Attachments

No.	Title	Page
A⇒	Attachment A: Draft Development Contributions Policy 2025	
B⇒	Attachment B: Schedule 8 Asset for which development contributions (DCs) will be used	
C⇒	Attachment C: Consultation Document - Contributions Policy 2025	
D⇒	Attachment D: How we set Development Contributions – Cost Allocation Methodology	
E⇒	Attachment E: Funding area maps	
F⇒	Attachment F: Memorandum and Summary of consultation feedback	

Ngā kaihaina Signatories

Author	Andrew Duncan - Manager Financial Policy
Authorisers	Lou-Ann Ballantyne - General Manager Governance and Engagement Victoria Villaraza - Local Area Manager

Local board feedback on the Land Transport Management (Time of Use Charging) Amendment Bill

File No.: CP2025/06712

Item 20

Te take mō te pūrongo

Purpose of the report

1. To invite local board feedback on the *Land Transport Management (Time of Use Charging) Amendment Bill*.

Whakarāpopototanga matua

Executive summary

2. The [Land Transport Management \(Time of Use Charging\) Amendment Bill](#) (the Bill) seeks to enable Time of Use Charging (TOUC) in New Zealand. It has been referred to the Transport and Infrastructure Select Committee with a closing date of 27 April 2025.
3. A joint project team from Auckland Council and Auckland Transport is leading work on the TOUC schemes in Auckland. This work provides a strong evidence base to support council's submission advocating for policy settings that would enable a successful scheme in the city. The work programme builds on work done over recent years, particularly "[The Congestion Question](#)" report by the Ministry of Transport from 2020 and the Select Committee inquiry into congestion pricing in Auckland in 2021.
4. In parallel to the council/AT programme, the government has been advancing work to enable TOUC in New Zealand. The Bill was introduced to Parliament on 4 March 2025.
5. At its [meeting](#) on 5 December 2024, the Transport, Resilience and Infrastructure Committee requested staff prepare a submission on this draft bill.
6. On 12 February 2025, local board chairs and transport leads were invited to a Transport, Resilience and Infrastructure Committee workshop that outlined key aspects of the legislation and the proposed recommendations. The workshop presentation materials can be found in the [agenda of the Transport, Resilience and Infrastructure Committee - Thursday, 6 March 2025](#).
7. The programme team will develop a draft submission and seek endorsement from the Transport, Resilience and Infrastructure Committee at its 3 April 2025 meeting.
8. An insights report will be a component of the draft submission, and this includes a summary, and all details of prior local board feedback provided in September and October 2024 (see Attachment A). The report will be included in the 3 April committee paper.
9. Local boards acknowledged the need to address congestion but raised concerns about transport accessibility, impacts on low-income communities, and those who must drive at peak times. The most common feedback emphasised the need for viable public transport alternatives and reinvesting revenue into improving services, particularly in deprived areas.
10. Many boards also stressed that public transport issues must be resolved before introducing a time-of-use charge, as many residents lack flexibility in work hours or commute options. Concerns were also raised about financial burdens on households, with suggestions for exemptions and daily caps. Safety issues related to alternative routes to avoid charges were another key theme. Feedback focused on ensuring the scheme is effective, fair, and simple, with appropriate mitigations and revenue allocation.
11. Providing feedback on this is an opportunity to influence how TOUC schemes can be implemented in a way that is beneficial for Auckland. It does not commit the council to implementing a TOUC scheme.

12. The work programme has regularly reported to, and taken guidance from, the AT Design and Delivery Committee and the council TOUC Political Reference Group. Additionally, local boards have provided resolutions on the necessary core principles for an effective scheme.
13. The government's policy objectives are broadly aligned with those identified by the council and AT TOUC programme. However, there are some aspects of the Bill that are not consistent, particularly regarding scheme governance, mitigations and revenue. Further details are available in the workshop presentation (link above).
14. Local boards received a briefing from the project team on 24 March.
15. Any feedback from local boards will be appended to the Auckland Council /Auckland Transport (AT) submission. This is due by 4pm on 22 April 2025.

Ngā tūtohunga Recommendation/s

That the Howick Local Board:

- a) tuku / provide feedback on the Land Transport Management (Time of Use Charging) Amendment Bill.

Ngā tāpirihanga Attachments

No.	Title	Page
A⇒	Insights Report - Auckland Transport & Auckland Council Time of Use Charging programme	

Ngā kaihaina Signatories

Author	Michael Roth - Lead Transport Advisor
Authorisers	Louise Mason - General Manager Policy Lou-Ann Ballantyne - General Manager Governance and Engagement Victoria Villaraza - Local Area Manager

Public feedback on proposal to amend dog policy and bylaw

File No.: CP2025/06707

Item 21

Te take mō te pūrongo

Purpose of the report

1. To seek local board views on how the Governing Body Dog Policy and Bylaw Panel should address public feedback from people in the local board area to the proposal to amend matters of regional significance in the Auckland Council Dog Policy and Bylaw.
2. To delegate one or more local board members to represent local board views on the public feedback to the Dog Policy and Bylaw Panel.

Whakarāpopototanga matua

Executive summary

3. Staff have prepared a summary of public feedback to enable the local board to provide its views on how the Panel should address public feedback from people in the local board area to the proposal to amend matters of regional significance in the Dog Policy and Bylaw.
4. The Governing Body adopted a proposal to amend matters of regional significance in the [Kaupapa mo ngā Kurī | Policy on Dogs 2019](#) and [Ture a Rohe Tiakina Kurī | Dog Management Bylaw 2019](#) in December 2024, and appointed a Dog Policy and Bylaw Panel to consider all public feedback and make recommendations, before a final decision is made.
5. The [proposal](#) to adopt an amended [policy](#) and [bylaw](#) seeks to improve council's approach to dog management in Auckland by minimising the risk of danger and distress to people, stock, poultry, domestic animals and protected wildlife, nuisance to people, damage to property and environment, risk of not meeting the needs of dogs and their owners and the inherent risk of conflict between users of shared spaces in Auckland.
6. Council received responses from 5,207 people and organisations at the close of feedback on 23 February 2025. All public feedback is summarised in **Attachment A**. Feedback related to the local board area is in **Attachment B**. A user-friendly view of the feedback related to the local board by proposal can be viewed on council's [AKHaveYourSay](#) web page.
7. All feedback is summarised by the following topics:
 - Proposal 1: Limit to number of dogs walked (six on leash, with maximum three of the six off leash at any one time)
 - Proposal 2: Auckland Botanic Gardens
 - Proposal 3: Hunua Ranges Regional Park
 - Proposal 4: Long Bay Regional Park
 - Proposal 5A: Mahurangi Regional Park East
 - Proposal 5B: Mahurangi Regional Park West
 - Proposal 5C: Mahurangi Regional Park Scott Point
 - Proposal 6: Pākiri Regional Park
 - Proposal 7: Shakespear Regional Park
 - Proposal 8: Tāpapakanga Regional Park
 - Proposal 12B: Muriwai Regional Park
 - Proposal 12C: Tāwharanui Regional Park
 - Proposal 12D: Wenderholm Regional Park
 - Proposal 13A: Restructure the policy to more clearly show its goal, focus areas, council actions, and rules
 - Proposal 13B: Clarify rule that all dogs classified as menacing must be neutered
 - Proposal 13C: Clarify who can provide behavioural assessments in relation to menacing dog classifications
 - Proposal 13D: Clarify what areas in Auckland require a license to keep multiple dogs on a property
 - Proposal 13E: Clarify how dog access rules are set
 - Proposal 13F: Clarify Auckland-wide dog access rules
 - Proposal 13G: Clarify or correct errors in Policy Schedule 2: Dog access rules

- Proposal 9: Te Ārai Regional Park
- Proposal 10: Waitawa Regional Park
- Proposal 11: Whakanewha Regional Park
- Proposal 12A: Ambury Regional Park
- Proposal 13H: Remove outdated information in Policy Schedule 2: Dog access rules
- Proposal 13I: Update dog access rules for Tūpuna Maunga (ancestral mountains)
- Proposal 13J: Remove outdated/duplicated bylaw content

8. Staff recommend that the local board provide its views on how the Panel should address feedback from people in the local board area, and if it wishes, present those views to the Panel. Taking this approach will assist the Panel in making recommendations to the Governing Body about whether to adopt the proposal.
9. There is a reputational risk that the feedback from the local board area is from a limited group of people and does not reflect the views of the whole community. This report mitigates this risk by providing local boards with a summary of all public feedback.
10. Local boards can (if they wish) present their views to the Panel on 23 May 2025. The Panel will consider local board views and all public feedback before making recommendations to the Governing Body in June 2025. The Governing Body will make a final decision mid-2025.

Ngā tūtohunga Recommendation/s

That the Howick Local Board:

- a) **tūtohi / receive** the public feedback from people in the local board area to the Governing Body proposal to amend matters of regional significance in the Auckland Council [Kaupapa mo ngā Kurī | Policy on Dogs 2019](#) and [Ture a Rohe Tiakina Kurī | Dog Management Bylaw 2019](#) in the agenda report.
- b) **whakarato / provide** its views on how the Governing Body Dog Policy and Bylaw Panel should address public feedback to the proposal in (a) to assist the Panel in its deliberations.
- c) **whakatuu / appoint** one or more local board members to present the views in (b) to the Governing Body Dog Policy and Bylaw Panel.
- d) **tuku mana / delegate** authority to the local board chair to appoint a replacement to any appointed member in (c) who is unable to present to the Panel.

Horopaki Context

The local board has an opportunity to provide its views on public feedback

11. The local board in accordance with council's collaborative governance model² now has an opportunity to provide its views on how the Governing Body Dog Policy and Bylaw Panel should address public feedback from people in the local board area to the proposal.
12. Local board views must be provided by resolution to the Panel. The local board can also choose to present those views to the Panel at a meeting scheduled for 23 May 2025.
13. The nature of the local board views is at the discretion of the local board but must remain within the scope of the proposal and public feedback. For example, the local board:
 - ✓ could indicate support for matters raised in public feedback
 - ✓ could recommend how the Policy and Bylaw Panel address matters raised in public feedback

² The Local Board Involvement in Regional Policy, Plans and Bylaws – Agreed Principles and Processes 2019

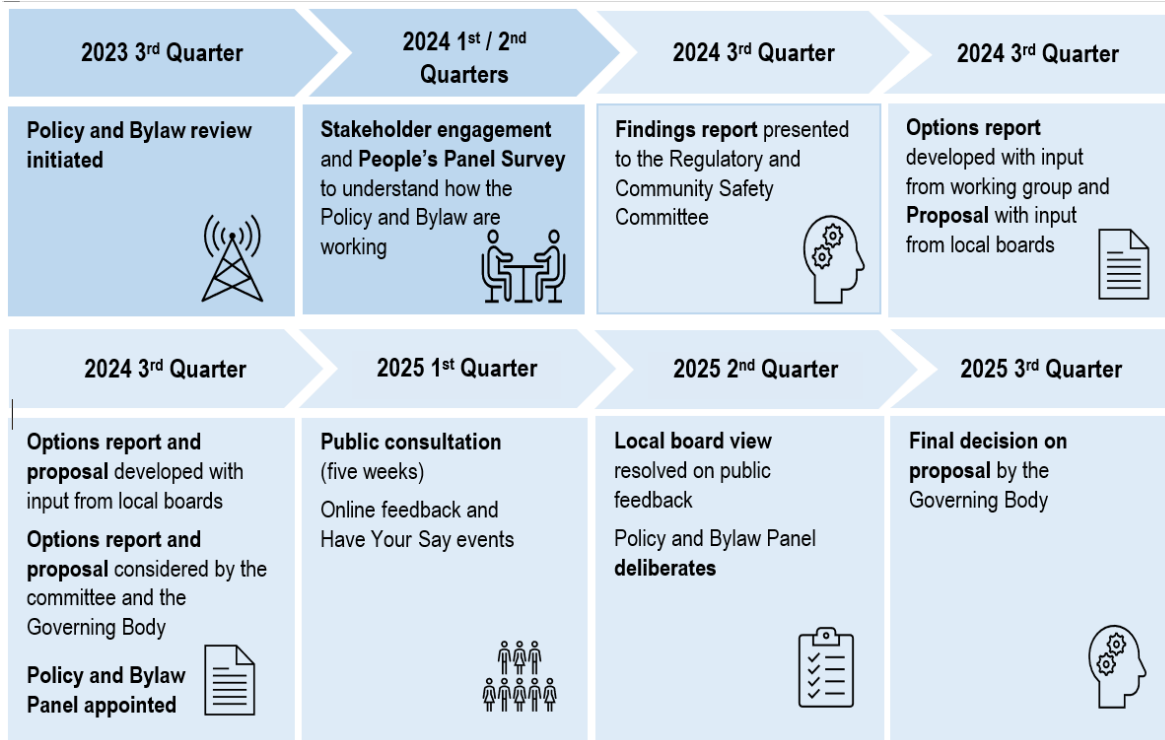
- ✘ should not express its views on the proposal itself (that opportunity was provided prior to public consultation, the focus now is on how to respond to public feedback).

Council is required to have a policy on dogs and a bylaw to implement the policy

14. The Dog Control Act 1996 requires Auckland Council to have a policy on dogs and a bylaw to give effect to it by specifying rules that dog owners must comply with.
15. Council's objective is to 'keep dogs a positive part of the life of Aucklanders' by:
 - maintaining opportunities for owners to take their dogs to public places
 - adopting measures to minimise the problems caused by dogs (including by promoting responsible dog ownership)
 - protecting dogs from harm and ensuring their welfare.
16. The rules are enforced by the Animal Management unit using a modern regulator approach to compliance (for example information, education and enforcement).
17. The policy and bylaw are part of a wider regulatory framework that includes the following:
 - The Dog Control Act 1996 manages matters relating to dog ownership, including their care, control and owner responsibilities for damage caused by their dog.
 - The Animal Welfare Act 1999 ensures that owners of animals and persons in charge of animals attend properly to the welfare of the animal.
 - The Code of Welfare for Dogs 2018 provides information to the owners and persons in charge of dogs about the standards they must achieve to meet their obligations under the Animal Welfare Act 1999.

The Governing Body proposed amending matters of regional significance in the policy and bylaw for public feedback

18. On 12 December 2024, the Governing Body adopted a proposal to amend matters of regional significance in the Auckland Council [Kaupapa no ngā Kurī / Policy on Dogs 2019](#) and [Ture ā Rohe Tiakina Kurī / Dog Management Bylaw 2019 \(GB/2024/181\)](#). It also appointed a Dog Policy and Bylaw Panel to consider all public feedback and make recommendations, before a final decision is made by the Governing Body.
19. The proposal arose from a statutory review of the Dog Policy and Bylaw (see figure below).



20. The proposal seeks to improve council’s approach to dog management in Auckland by minimising the risk of danger and distress to people, stock, poultry, domestic animals and protected wildlife, nuisance to people, damage to property and environment, risk of not meeting the needs of dogs and their owners from irresponsible dog ownership and the inherent risk of conflict between users of shared spaces in Auckland.
21. The main proposals are outlined in the Table below:

Main proposals
Set a limit to the number of dogs a person may ‘walk’ in a council-controlled public place at one time (maximum of six dogs of which no more than three may be under control off a leash at any one time)
<p>Auckland Botanic Gardens</p> <ul style="list-style-type: none"> • Change the off-leash area to align with the current signposted off-leash boundaries, to provide for temporary changes for events and to transition to on-leash as parts of the off-leash area are developed in accordance with the Gardens Master Plan. • Prohibit dogs from waterways. • Prohibit dogs from the Huakaiwaka Visitor Centre, Café area (except the western café terrace), designated food concession areas and Potter Children’s Garden. • Clarify rules in other areas.
<p>Hunua Ranges Regional Park</p> <ul style="list-style-type: none"> • Prohibit dogs from tracks and roads that connect to the Kohukohunui track, the Kokako Management Area and Piggott’s Habitat and on single use mountain bike tracks (currently on-leash).
<p>Long Bay Regional Park</p> <ul style="list-style-type: none"> • Amend the summer daytime rule for the beach south of Vaughan Stream from on-leash to prohibited (off-leash access before 10am and after 5pm in summer and at any time in winter unchanged). • Clarify rules in other areas, including access to beach from southernmost carpark and prohibited tracks and bays.
<p>Mahurangi Regional Park</p> <ul style="list-style-type: none"> • Prohibit dogs on Cudlip Point Loop Track (currently on-leash). • Allow dogs on-leash at all times at Scott Point (currently on-leash time and season). • Clarify rules in other areas (including dogs prohibited at Mahurangi Regional Park (East) and heritage grounds at Scott Point).

Main proposals
<p>Pākiri Regional Park</p> <ul style="list-style-type: none"> Prohibit dogs on the associated beach.
<p>Shakespear Regional Park</p> <ul style="list-style-type: none"> Apply an on-leash time and season rule to the open grass areas between Army Bay and Okoramai Bay (currently off-leash). Clarify rules in other areas (such as boundary of Army Bay and Okoramai Bay beaches, on-leash tracks and prohibited areas).
<p>Tāpapakanga Regional Park</p> <ul style="list-style-type: none"> Provide off-leash access on beach and on-leash access on area between beach and car park at any time (currently prohibited during lambing season) Clarify rules in other areas (such as prohibited at the campgrounds and bach, and during lambing).
<p>Te Ārai Regional Park</p> <ul style="list-style-type: none"> Prohibit dogs on Forestry Beach (Te Ārai Beach South to Pakiri Beach) and associated coastal tracks. Clarify access to off-leash area at disused quarry.
<p>Waitawa Regional Park</p> <ul style="list-style-type: none"> Change eastern part of Matakaitai Beach from off-leash to on-leash. Change Waitawa Beach from off-leash to on-leash. Prohibit dogs on single use mountain bike tracks. Clarify other areas where dogs are prohibited (such as farm paddock during lambing, campground and bach).
<p>Whakanewha Regional Park</p> <ul style="list-style-type: none"> Provide on-leash access on tracks from Omiha (Rocky Bay) to the on-leash area of the Park.
<p>Ambury, Muriwai, Tāwharanui and Wenderholm regional parks</p> <ul style="list-style-type: none"> Clarify current rules (no change to dog access).
<p>Reorganise, simplify and clarify Policy and Bylaw content, including:</p> <ul style="list-style-type: none"> using a goal, focus area, action and rule structure clarifying approach to setting dog access rules clarifying the policy to neuter classified dogs and who can provide behavioural assessments clarifying Auckland-wide dog access rules such as for council carparks and camping grounds, working dogs, dogs in vehicles and private ways removing outdated information in Schedule 2 for example outdated landmarks updating dog access rules on Tūpuna Maunga (ancestral mountains) removing Bylaw content that is covered in the Policy or is outdated.

22. The proposal was publicly notified for feedback from 20 January until 23 February 2025.
23. Council received feedback from 5,186 people and 30 organisations (5,207 in total)
 - 4,046 on the proposal to limit the number of dogs walked and the general policy and bylaw matters and
 - 3,084 on the proposal to clarify or change regional park dog access rules.

Tātaritanga me ngā tohutohu Analysis and advice

24. A total of **221 people from the Howick Local Board area** provided feedback to the proposal.
25. There was **majority support** for proposals to reorganise, simplify and clarify Policy and Bylaw content, and proposals to change or clarify dog access rules at Tāpapakanga, Waitawa, Whakanewha, Tāwharanui, and Wenderholm Regional Parks, **split support** for proposals to change or clarify dog access rules at Mahurangi and Muriwai Regional Parks, and **majority opposition** for the proposal to limit the number of dogs walked and the remaining proposals to change or clarify dog access rules at other regional parks.

26. Key themes from the Auckland-wide feedback highlighted concerns with limiting the number of dogs and clarifying or changing the dog access rules at most of the regional parks.
27. While some proposals may not be supported, public feedback also seeks alternatives other than the status quo. For example:
- for Proposal 1: limit to number of dogs walked, of the 66 per cent (2,397) of Auckland-wide feedback opposed to the proposal:
 - six per cent (146) supported a limit of four dogs, with no more than two off-leash
 - five per cent (113) supported a limit of four dogs, with no more than two off-leash unless licence obtained
 - four per cent (100) supported a limit of eight dogs, with no more than four off-leash
 - 638 comments (around 30 per cent) supported introducing a dog walker license for qualified dog walkers.
 - for proposed changes to regional park rules, Auckland-wide individuals who opposed the changes:
 - generally wanted council to provide more dog-friendly or off-leash areas
 - some were not opposing the proposals, but instead expressing the view that the current rules are too restrictive.

Overview of local board area and Auckland-wide support for proposed changes

Topic (Proposals P1 – P13)	Local board feedback		Auckland-wide feedback	
	Support	Opposition	Support	Opposition
P1 Limit the number of dogs walked (six on leash, with maximum three of the six off leash at any one time)	45 per cent	55 per cent	33 per cent	66 per cent
P2 Auckland Botanic Gardens	41 per cent	59 per cent	34 per cent	62 per cent
P3 Hunua Ranges Regional Park	38 per cent	51 per cent	33 per cent	56 per cent
P4 Long Bay Regional Park	32 per cent	61 per cent	26 per cent	70 per cent
P5A Mahurangi Regional Park East	42 per cent	47 per cent	27 per cent	62 per cent
P5B Mahurangi Regional Park West	42 per cent	42 per cent	28 per cent	60 per cent
P5C Mahurangi Regional Park Scott Point	41 per cent	41 per cent	29 per cent	61 per cent
P6 Pākiri Regional Park	20 per cent	70 per cent	15 per cent	81 per cent
P7 Shakespear Regional Park	38 per cent	55 per cent	39 per cent	51 per cent
P8 Tāpapakanga Regional Park	57 per cent	29 per cent	34 per cent	55 per cent
P9 Te Ārai Regional Park	41 per cent	50 per cent	18 per cent	76 per cent
P10 Waitawa Regional Park	52 per cent	43 per cent	30 per cent	61 per cent
P11 Whakanewha Regional Park	53 per cent	27 per cent	35 per cent	51 per cent
P12A Ambury Regional Park	42 per cent	52 per cent	37 per cent	55 per cent
P12B Muriwai Regional Park	47 per cent	41 per cent	46 per cent	47 per cent
P12C Tāwharanui Regional Park	52 per cent	32 per cent	43 per cent	45 per cent
P12D Wenderholm Regional Park	50 per cent	29 per cent	42 per cent	44 per cent
P13A Restructure the policy to more clearly show its goal, focus areas, council actions, and rules	80 per cent	10 per cent	71 per cent	17 per cent
P13B Clarify rule that all dogs classified as menacing must be neutered	87 per cent	8 per cent	81 per cent	13 per cent

Topic (Proposals P1 – P13)	Local board feedback		Auckland-wide feedback	
	Support	Opposition	Support	Opposition
P13C Clarify who can provide behavioural assessments in relation to menacing dog classifications	86 per cent	2 per cent	83 per cent	6 per cent
P13D Clarify what areas in Auckland require a license to keep multiple dogs on a property	82 per cent	13 per cent	74 per cent	17 per cent
P13E Clarify how dog access rules are set	88 per cent	4 per cent	75 per cent	13 per cent
P13F Clarify Auckland-wide dog access rules	82 per cent	12 per cent	76 per cent	17 per cent
P13G Clarify or correct errors in Policy Schedule 2: Dog access rules	73 per cent	4 per cent	67 per cent	12 per cent
P13H Remove outdated information in Policy Schedule 2: Dog access rules	83 per cent	5 per cent	80 per cent	9 per cent
P13I Update dog access rules for Tūpuna Maunga (ancestral mountains)	51 per cent	23 per cent	49 per cent	26 per cent
P13J Remove outdated or duplicate bylaw content	88 per cent	2 per cent	81 per cent	7 per cent

Note: percentages do not add up to 100. For example, 'I don't know' responses are not included in Table.

28. The [proposal](#), proposed [policy](#) and [bylaw](#) can be viewed in the links. A summary of all public feedback is in **Attachment A** and a copy of all public feedback related to the local board area to meet council's statutory requirements is in **Attachment B**. A more user-friendly view that consolidates the comments from all public feedback related to the local board by proposal can be viewed on council's [AKHaveYourSay](#) web page.

Staff recommend the local board provide its views on public feedback

29. Staff recommend that the local board provide its views on how the Governing Body Panel should address public feedback from people in the local board area to the proposal by resolution, and if it wishes, present those views to the Panel on 23 May 2025.

Tauākī whakaaweawe āhuarangi Climate impact statement

30. The Dog Policy and Bylaw do not directly address the climate change goals in [Te Tāruke-ā-Tāwhiri: Auckland's Climate Plan](#). For example, the Policy and Bylaw focuses more on keeping dogs as a positive part of the lives of Aucklanders.
31. There are no implications for climate change arising from decisions sought in this report.

Ngā whakaaweawe me ngā tirohanga a te rōpū Kaunihera Council group impacts and views

32. The Dog Policy and Bylaw impacts the operations of several council departments, including Animal Management, Biodiversity, Regional Parks and Natural Environment teams. Relevant staff are aware of the impacts of the proposal and their implementation role.

Ngā whakaaweawe ā-rohe me ngā tirohanga a te poari ā-rohe Local impacts and local board views

33. The Dog Policy and Bylaw impact local governance and are of high interest.

34. Views from all local boards on a draft proposal were sought in October 2024 and are summarised in the 3 December 2024 Regulatory and Safety Committee agenda ([Attachment C](#) to Item 11).
35. This report provides an opportunity to give local board views on how the Governing Body Dog Policy and Bylaw Panel should address public feedback from people in the local board area to the proposal, before a final decision is made.

Tauākī whakaaweawe Māori Māori impact statement

36. The Dog Policy and Bylaw support manaakitanga, whanaungatanga and kaitiakitanga in the Independent Māori Statutory Board’s [Māori Plan for Tāmaki Makaurau](#) and the [Schedule of Issues of Significance](#) by providing regulations that help protect people and the environment from harm caused by dogs.
37. Mana whenua and mataawaka were notified of the proposal and given the opportunity to provide feedback through face-to-face meetings, in writing, online and in-person.
38. Six per cent (369) of the public feedback received was from people who identified as Māori. Of that feedback:
 - 74 per cent (166) did not support the proposal to limit the number of dogs that could be walked, with 58 per cent preferring no change to the current rule
 - there was general overall support (more than 50 per cent) to reorganise, simplify and clarify the Policy and Bylaw content, however there was less support (47 per cent) to update dog access rules for Tupuna Maunga (ancestral mountains)
 - there was generally opposition to proposed changes to regional park dog access rules.
39. Ngati Manuhiri Settlement Trust supported the majority of the proposals to simplify and clarify the Policy and Bylaw content and proposed changes to Long Bay, Mahurangi, Pākiri, Shakespear, Tāwharanui, Te Ārai and Wenderholm Regional Parks.

Ngā ritenga ā-pūtea Financial implications

40. There are no financial implications arising from decisions sought in this report. Costs associated with the special consultative procedure and Dog Policy and Bylaw implementation will be met within existing budget.

Ngā raru tūpono me ngā whakamaurutanga Risks and mitigations

41. The following risk has been identified:

If...	Then...	Mitigation
The feedback from the local board area is from a limited number of people.	The feedback may not reflect the views of the whole community.	This risk is mitigated by providing local boards with a summary of all public feedback.

Ngā koringa ā-muri Next steps

42. The Governing Body Dog Policy and Bylaw Panel will consider all local board views and public feedback on the proposal, deliberate and make recommendations to the Governing Body in June 2025. The Governing Body will make a final decision mid-2025.

Ngā tāpirihanga Attachments

No.	Title	Page
A⇒	Summary of public feedback to the proposed changes to the dog policy and bylaw	
B⇒	Public feedback from people in Howick Local Board area	

Ngā kaihaina Signatories

Author	Kylie Hill - Principal Advisor Regulatory Practice
Authorisers	Louise Mason - General Manager Policy Lou-Ann Ballantyne - General Manager Governance and Engagement Victoria Villaraza - Local Area Manager

Urgent Decision of the Howick Local Board to Formalise Input into Auckland Council's submission on the proposed wastewater environmental performance standards

File No.: CP2025/06850

Item 22

Te take mō te pūrongo Purpose of the report

1. To note that an urgent decision was made to formalise the Howick Local Board's input into Auckland Council's submission on the proposed wastewater environmental performance standards by the Water Services Authority – Taumata Arowai.

Whakarāpopototanga matua Executive summary

2. At its meeting on 17 November 2022 the Howick Local Board resolved (HW/2022/178) the following in relation to urgent decision-making:

That the Howick Local Board:

- a) *delegate authority to Chairperson Damian Light and Deputy Chairperson Bo Burns, or any person acting in these roles, to make urgent decisions on behalf of the local board, if the local board is unable to meet*
 - b) *confirm that the Local Area Manager, chairperson, and deputy chairperson (or any person/s acting in these roles) will authorise the use of the local board's urgent decision mechanism by approving the request for an urgent decision in writing*
 - c) *note that all urgent decisions made, including written advice which supported these decisions, will be included on the agenda of the next ordinary meeting of the local board.*
3. Local board has the opportunity to provide input into Auckland Council's submission on the proposed wastewater environmental performance standards by the Water Services Authority – Taumata Arowai.
 4. An urgent decision was required as the deadline for feedback to be incorporated into the Council's submission was 4 April 2025. The Howick Local Board's next scheduled business meeting was on 17 April 2025.
 5. The urgent decision memo is included in this agenda report as Attachment A. This includes the original Council memo on the proposed wastewater environmental performance standards, and the urgent decision itself.

Ngā tūtohunga Recommendation/s

That the Howick Local Board:

- a) tuhi tīpoka/ note the urgent decision made on 4 April 2025 to formalise the Howick Local Board's input into Auckland Council's submission on the proposed wastewater environmental performance standards by the Water Services Authority – Taumata Arowai, as follows:
 - i) the Board request that the new wastewater environmental performance standards:

- A) ensure that the percentage volume of discharge into a receiving environment is managed so that the receiving environment is not overwhelmed and kept below scientifically proven percentages ensuring native biodiversity is not degraded, and the ability to swim is maintained.
- B) where the receiving environment is currently being overwhelmed by discharge (as a percentage), that urgency is given to ensuring that planning is done and made publicly available as to when water quality improvements will be seen.

Item 22

Ngā tāpirihanga Attachments

No.	Title	Page
A⇒	17 April 2025, Howick Local Board: Urgent Decision of the Howick Local Board to Formalise Input into Auckland Council's submission on the proposed wastewater environmental performance standards - Copy of the Urgent Decision Memo	

Ngā kaihaina Signatories

Author	Matt Fletcher – Local Board Advisor
Authoriser	Victoria Villaraza - Local Area Manager

Record of Howick Local Board Workshop Notes

File No.: CP2025/05922

Te take mō te pūrongo Purpose of the report

1. To provide a summary of Howick Local Board (the Board) workshop notes.

Whakarāpopototanga matua Executive summary

2. The attached summary of workshop notes provides a record of the Board's workshops.
3. Workshops are an informal forum held primarily for information or discussion purposes and at which no resolutions or decisions are made.
4. For openness and transparency, the Howick Local Board made a decision at their 19 September business meeting (HW/2024/159), to hold Open by Default Workshops from 1 January 2025. The agenda and presentation material from workshops held on 27 March and 3, 10 April 2025 can be viewed on Auckland Council's website, which can be found here: <https://infocouncil.aucklandcouncil.govt.nz/>

Ngā tūtohunga Recommendation/s

That the Howick Local Board:

- a) tuhi ā-taipitopito / note the workshop record for the workshop held on 27 March and 3, 10 April.

Ngā tāpirihanga Attachments

No.	Title	Page
A⇒	17 April 2025, Howick Local Board - Howick Local Board Workshop Records – 27 March 2025 Record of Workshop	
B⇒	17 April 2025, Howick Local Board - Howick Local Board Workshop Records – 3 April 2025 Record of Workshop	
C⇒	17 April 2025, Howick Local Board - Howick Local Board Workshop Records – 10 April 2025 Record of Workshop	

Ngā kaihaina Signatories

Author	Matt Fletcher - Democracy Advisor
Authoriser	Victoria Villaraza - Local Area Manager

Hōtaka Kaupapa | Governance Forward Work Calendar

File No.: CP2025/00139

Item 24

Te take mō te pūrongo Purpose of the report

1. To present the Howick Local Board with its updated Hōtaka Kaupapa.

Whakarāpopototanga matua Executive summary

2. The Hōtaka Kaupapa for the Howick Local Board is in Attachment A. The calendar is updated monthly, reported to meetings and distributed to council staff.
3. The Hōtaka Kaupapa / governance forward work calendars was introduced in 2016 as part of Auckland Council's quality advice programme and aim to support local boards' governance role by:
 - ensuring advice on meeting agendas is driven by local board priorities
 - clarifying what advice is expected and when
 - clarifying the rationale for reports.

Ngā tūtohunga Recommendation/s

That the Howick Local Board:

- a) tuhi ā-taipitopito / note the Hōtaka Kaupapa included as Attachment A of the agenda report.

Ngā tāpirihanga Attachments

No.	Title	Page
A⇒	17 April 2025, Howick Local Board - Hōtaka Kaupapa Governance Forward Work Calendar - Copy of the Hōtaka Kaupapa	

Ngā kaihaina Signatories

Author	Matt Fletcher - Democracy Advisor
Authoriser	Victoria Villaraza - Local Area Manager