

**Date:** Thursday 24 April 2025  
**Time:** 12.00pm  
**Meeting Room:** Waitākere Ranges Local Board Office  
**Venue:** 39 Glenmall Place  
Glen Eden

---

## Waitākere Ranges Local Board Open Workshop

### NOTE ITEM ATTACHMENTS

---

<b>ITEM</b>	<b>TABLE OF CONTENTS</b>	<b>PAGE</b>
<b>1</b>	<b>Local Board Workshop</b>	
	A. April 24, Waitākere Ranges Local Board Annual Planning 7 - Consultation feedback and local board regional input presentation	3



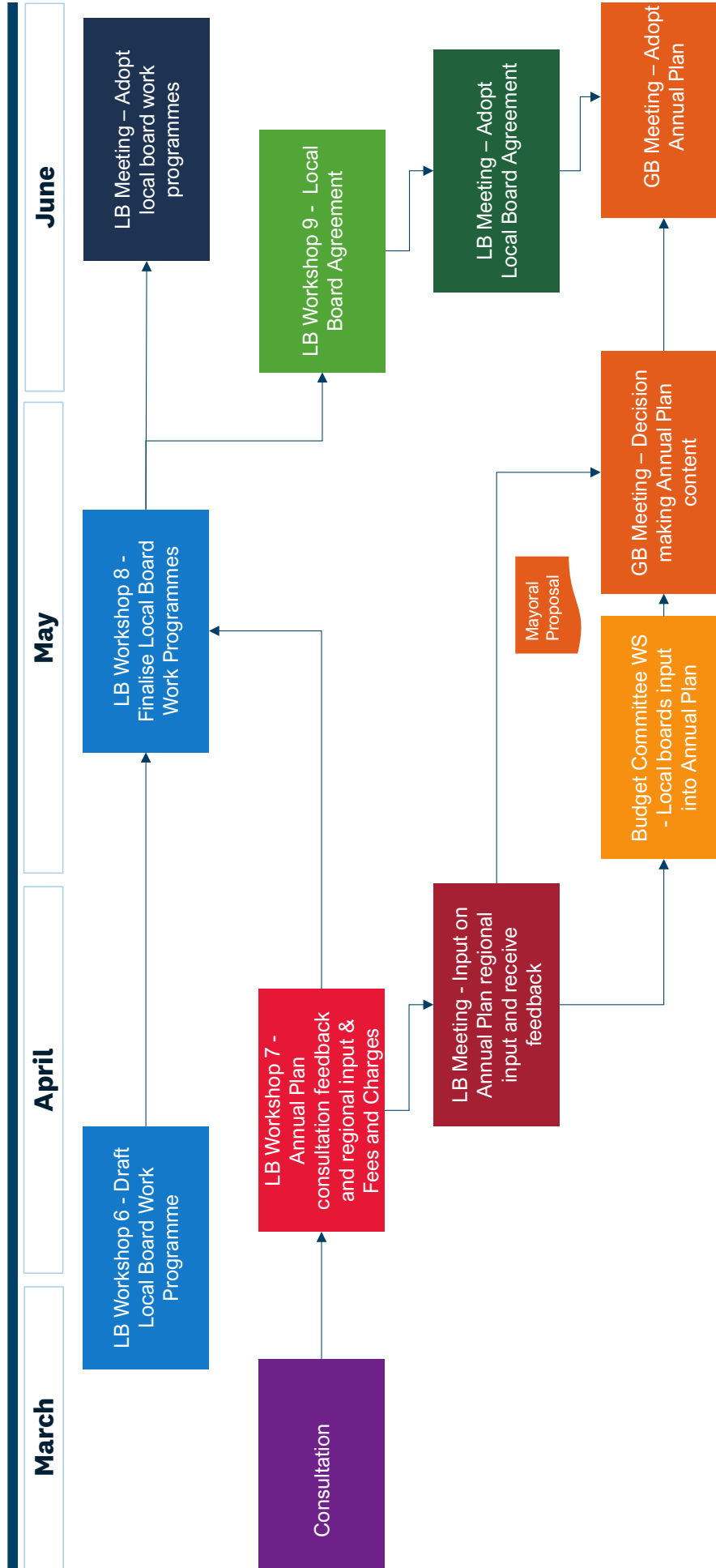


Annual Plan 2025/2026

24 April 2025



# Timeline (second half)





## Workshop purpose

1. To receive consultation feedback from the Waitākere Ranges Local Board area on:
  - proposed local board priorities for 2025/2026
  - regional topics in the draft Annual Plan 2025/2026
2. Discuss local feedback on regional topics and advocacy initiatives to be formalised at your business meeting on 1 May 2025. These will be considered by the Governing Body when making decisions on the Annual Plan 2025/2026
3. Discuss other local matters that need consideration in Annual Plan





## LBA Workshop: agenda

Topic	
Topic 1	Consultation feedback on local board priorities for 2025/2026 and advocacy initiatives
Topic 2	Consultation feedback on regional topics in the proposed Annual Plan 2025/2026
Topic 3	Advocacy initiatives to be considered by Governing Body for the Annual Plan 2025/2026
Topic 4	Input on regional topics in the proposed Annual Plan 2025/2026 including local matters that need consideration



# Topic 1: Consultation feedback on local board priorities for 2025/2026 and advocacy initiatives



## Types of feedback

- Online submissions, hard copy forms, emails and letters.
- Have Your Say events, phone surveys.

### Feedback received

Out of 13,016 pieces of feedback received regionally, the Waitākere Ranges Local Board received 489 individual submissions and 8 submissions from organisations.

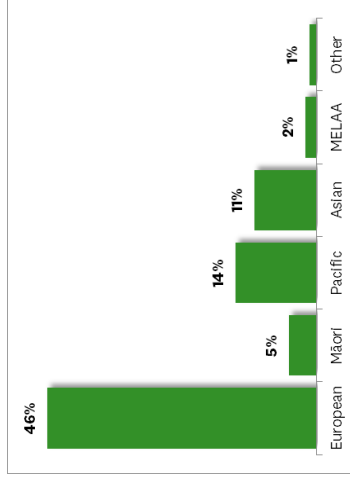
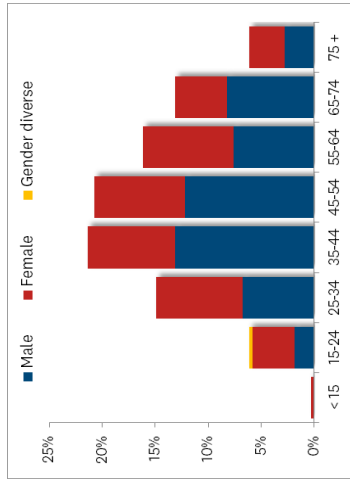
NB all feedback will be made available on an Auckland Council webpage called “Feedback on the Annual Plan 2025/2026” and will be accessible after 22 April 2025 through the following link:

<https://akhaveyoursay.aucklandcouncil.govt.nz/annual-plan-2025-2026/feedback-annual-plan-2025-2026>.



# Information on submitters

The tables and graphs below indicate what demographic categories people identified with. This information only relates to those submitters who provided demographic information.





# Consultation feedback received on the Waitākere Ranges Local Board priorities for 2025/2026 and advocacy initiatives

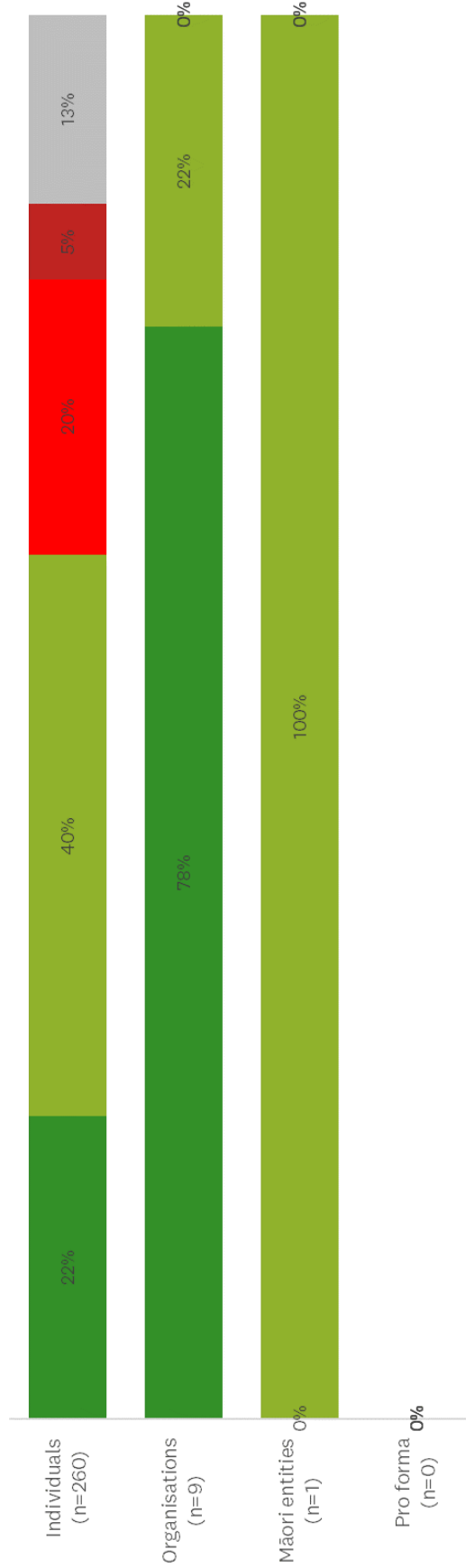
Waitākere Ranges Local Board consulted on the nine following local priorities:

- Priority 1: the Event Partnership Fund to support more community-led events
- Priority 2: arts and culture programmes delivered through our community arts partners
- Priority 3: tailoring programmes to serve diverse communities (youth, older adults, Pacific and ethnic communities)
- Priority 4: community development, placemaking and activation in our growing neighbourhoods and centres such as Glen Eden, Sunnyvale and Swanson
- Priority 5: supporting business associations to continue supporting local businesses and ongoing growth, develop and live-up our town centres, including assisting Glen Eden Business Association and establishing of Titirangi Business Association
- Priority 6: environmental programmes to help protect and restore the Waitākere Ranges
- Priority 7: trialling phosphite treatment of kauri infected with kauri dieback on selected local parks
- Priority 8: improving neighbourhood parks: George Herring Common, Korōi / Clayburn Reserve, Tautoru / Maywood Park, and Sandys Parade.

The following graphs give an overview of the responses from Waitākere Ranges Local Board area.



# 4B: What do you think of our proposals for your local board area in 2025/2026?

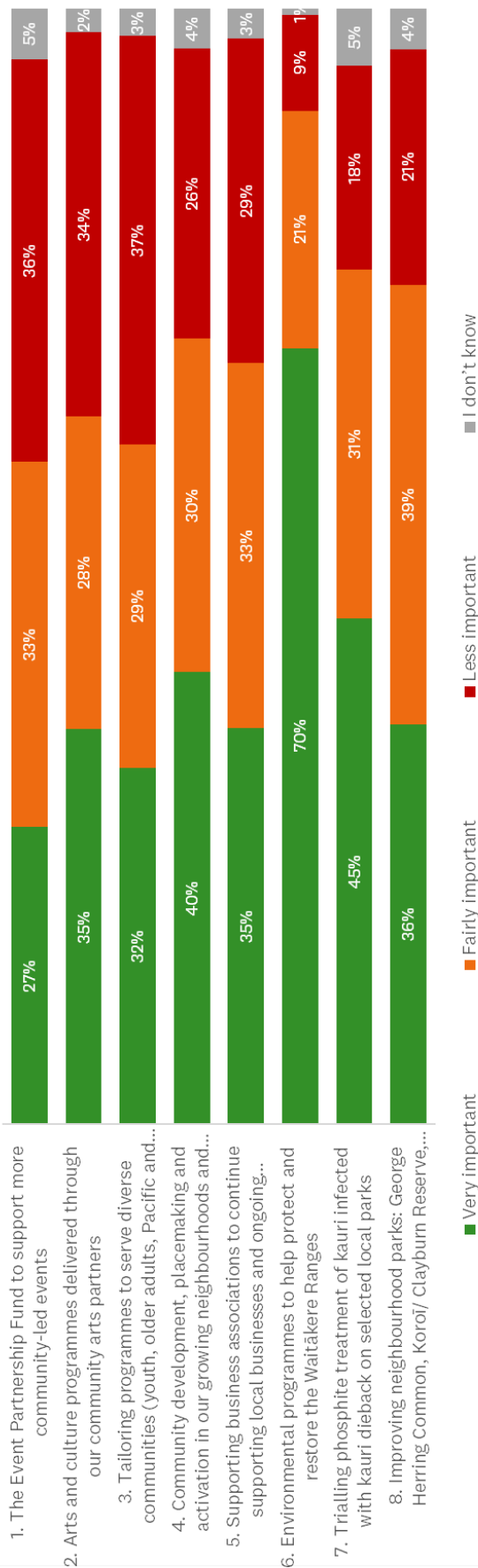


■ Support all   ■ Support most   ■ Do not support most   ■ Do not support any   ■ I don't know

Local Board Proposals 2025/2026					
Overall (Waitākere Ranges + Outside Local Board)					
	Support all	Support most	Do not support	Do not support any	I don't know
Individuals (n=260)	56	104	51	14	35
Organisations (n=9)	7	2	0	0	0
Māori entities (n=1)	0	1	0	0	0
Pro forma (n=0)	0	0	0	0	0



### 4B: Local board priorities How important are these priorities to you?





## Themes

- general support for arts and culture programmes and support for continuing arts funding
- general support for environmental programmes to help protect and restore the Waitākere Ranges, with some suggestions for focus areas
- mixed views regarding trialling phosphite treatment of kauri infected with dieback on selected local parks
- some support for programmes related to growth and development of Glen Eden town centre and
- a range of feedback was submitted pertaining to various topics, such as rates, council efficiency, roads, tracks, infrastructure and maintenance of storm-damaged assets.



## Events: local priorities and work programme parallels

Priority 1	Related work programme proposals
The Event Partnership Fund to support more community-led events	Continue existing Event Partnership Fund at same level Continue Movies in Parks (one movie only) Minor funding changes for Anzac Day and Civic Events
What submitters said	submission comments
Very important	27
Fairly important	33
Less important	36



## Arts and culture: local priorities and work programme parallels

Priority 2	Related work programme proposals	
Arts and culture programmes delivered through our community arts partners	Continue existing programmes, including support for West Coast Galley, Open Studios, McCahon House, Shadbolt House Recommended funding increases for Te Uru, Glen Eden Playhouse and Upstairs Gallery	
What submitters said	%	submission comments
Very important	35	
Fairly important	28	
Less important	34	



## Diverse communities: local priorities and work programme parallels

Priority 3	Related work programme proposals
Tailoring programmes to serve diverse communities (youth, older adults, Pacific and ethnic communities)	Continue current youth programmes (Tula'i Pasifika youth leadership; youth voice initiative) Welcoming communities – newcomers initiative Age friendly programme Digital literacy Library services Community houses, centres and halls Events Community grants
What submitters said	% submission comments
Very important	32
Fairly important	29
Less important	37





## Community development, placemaking and activation: local priorities and work programme parallels

<b>Priority 4</b>	<b>Related work programme proposals</b>	
Community development, placemaking and activation in our growing neighbourhoods and centres such as Glen Eden, Sunnyvale and Swanson	Continue existing community development programmes, including Glen Eden activation programme, community resilience, thriving communities Community Waitakere delivered placemaking and capacity building (increase support) Glen Eden and Titirangi Community Houses (increase support) Food security initiative Out and About activation programme Play plan implementation Community grants	
<b>What submitters said</b>	<b>%</b>	<b>submission comments</b>
Very important	40	
Fairly important	30	
Less important	26	



## town centres: local priorities and work programme parallels

Priority 5	Related work programme proposals
Supporting business associations to continue supporting local businesses and ongoing growth, develop and liven-up our town centres...	Continue to support Glen Eden BID with targeted rate Related programmes <ul style="list-style-type: none"> <li>Glen Eden activation programme</li> <li>Community facilities/services based in Glen Eden and Titirangi centres (Glen Eden and Titirangi libraries, Lopdell Precinct, Te Uru, Upstairs Gallery, Titirangi Community House, Titirangi War Memorial Hall and Reserve)</li> <li>Events (eg Glen Eden Day, Titirangi Market)</li> </ul>
What submitters said	% submitter comments
Very important	35
Fairly important	33
Less important	29



## Environment: local priorities and work programme parallels

Priority 6	Related work programme proposals
Environmental programmes to help protect and restore the Waitākere Ranges	OurBackyard/Bufferzone programme (shift focus) Community weed bins WRHA welcome pack Pekepeka (long-tailed bat) community education Dark sky project Eco-volunteers programme Ecological restoration contract Project Twin Streams maintenance EcoMatters programme
What submitters said	Submitter comments
Very important	70
Fairly important	21
Less important	9

## Environment: local priorities and work programme parallels

Priority 7	Related work programme proposals	
Trialling phosphite treatment of kauri infected with kauri dieback on selected local parks	Kauri phosphite treatment - Titirangi War Memorial	
What submitters said	%	Submitter comments
Very important	45	
Fairly important	31	
Less important	18	





## Local parks: local priorities and work programme parallels

Priority 8	Related work programme proposals
Improving neighbourhood parks: George Herring Common, Koroī / Clayburn Reserve, Tautoru / Maywood Park, and Sandys Parade	<p>Capex programme</p> <p>Related:</p> <ul style="list-style-type: none"> <li>• parks maintenance contracts</li> <li>• wheeled recreation assessment</li> <li>• Develop local parks management plan</li> <li>• Piha wetland/ Piha Domain investigation of flood risks</li> <li>• Community leases</li> </ul>
What submitters said	Submitter comments
Very important	36
Fairly important	39
Less important	21



## Requests for local funding

Requests for local funding through the Annual Plan 2025/2026 consultation and other funding requests include:

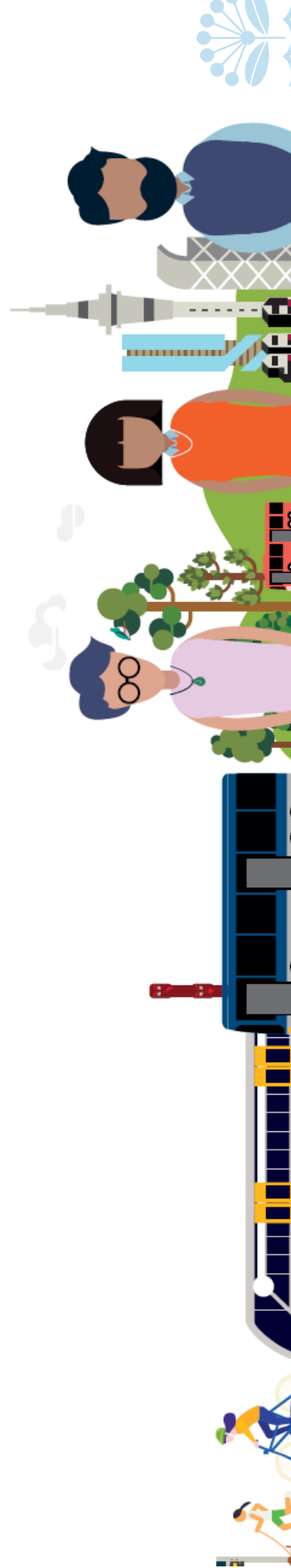
- Glen Eden Playhouse Theatre - increase in operational annual funding by an additional \$54,510.24, bringing total funding to **\$75,000**
- Te Kawerau ā Maki - joint local board funding to create two community officer roles – one in West Auckland and one in North Shore – to help better connect with the Local Boards and community within TKaM's heartlands. **\$200,000**
- STNN and W2L - establish a large-scale predator-free sanctuary. Significant funding request received. This has been referred to staff for further advice.
- Te Uru - funding request of additional **\$93,500**



# Topic 2: Consultation feedback received on regional topics in the proposed Annual Plan 2025/2026

# Waitākere Ranges Local Board input on regional topics in the Annual Plan 2025/2026

1. Overall Plan
2. Bed night visitor levy
3. Changes to other rates, fees and charges







## Overall Plan

Aucklanders were asked whether they support the overall plan including prioritising investment in transport, water, and fairer funding for local communities.

The consultation document for the Annual Plan 2025/2026 also outlined the proposed funding approach which includes a 5.8 per cent rates increase for the average value residential property, consistent with the LTP, and additional debt financing to fund \$4 billion in capital expenditure.

The proposed 5.8 per cent rates increase for the average value residential property for 2025/2026 includes the following proposed rates changes:

- an average general rates increase of 6.4 per cent for existing ratepayers
- an average increase of 3.5 per cent to the Natural Environment Targeted Rate (NETR) and Climate Action Transport Targeted Rate (CATTR) for existing ratepayers, as set out in the LTP
- an average increase of \$2.12 in the Water Quality Targeted Rate (WQTR) to cover the operating and interest costs for the programme, as set out in the LTP
- a 3.3 per cent increase to the overall Waste Management Targeted Rate (WMTR) for the typical household.

The following graphs give an overview of the responses from Waitākere Ranges Local Board area.





# Q1 What is your opinion on our proposed plan?



■ Support all ■ Support most ■ Do not support most ■ Do not support any ■ I don't know

Category	Count				
	Support all	Support most	Do not support most	Do not support any	I don't know
Individuals(n=332)	86	138	61	28	19
Organisations(n=6)	1	3	1	0	1
Māori entities(n=0)	0	0	0	0	0
Pro forma(n=0)	0	0	0	0	0



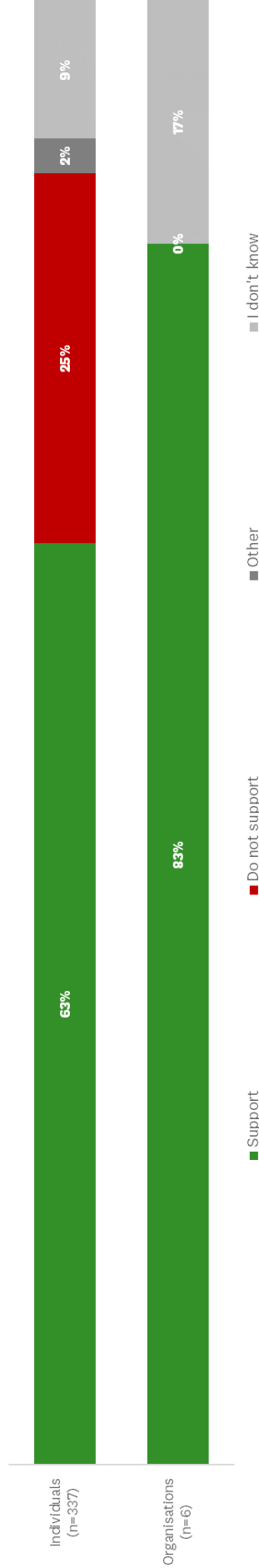
## Destination management and major events

Aucklanders were asked for feedback on a bed night visitor levy paid by those in short-stay commercial accommodation, to fund destination management, marketing and major events. Without such a levy, a \$7 million budget shortfall for the 2025/2026 financial year could impact the funding for major events that are expected to attract visitor expenditure, such as the ASB Classic, Auckland Marathon, and Auckland Writers Festival.

A bed night visitor levy of 2.5 to 3 per cent paid by those in short-stay accommodation would raise around \$27 million annually to fund even more destination management, marketing and major events activities in Auckland. However, this requires central government legislative change. Auckland Council continues to work with central government on this, with public feedback helping to inform this work.

The following graphs give an overview of the responses from Waitākere Ranges Local Board area.

## Q2 Do you support a bed night visitor levy paid by those in short-stay commercial accommodation, to fund destination management, marketing and major events activities?



	Support	Do not support	Other	I don't know
Individuals (n=337)	212	85	8	32
Organisations (n=6)	5	0	0	1
Māori entities (n=0)	0	0	0	0
Pro forma (n=0)	0	0	0	0





## Other rates, fees and charges

Aucklanders were asked to provide feedback on proposed changes to certain targeted rates and some fees and charges as outlined below:

### Waste management rates changes

Aucklanders were asked whether they support applying the Refuse Targeted Rate to residential and lifestyle properties in Franklin and Rodney to fund the council's rubbish collection service, replacing the current system of purchasing rubbish bags.

### Changes to fees and charges

Other proposed changes to fees and charges included in the consultation document for the Annual Plan 2025/2026 include:

- changes to some animal management fees including an increase in the dog adoption fee from \$350 to \$450 and an increase vet fee from \$75 to \$150
- fees for some cemetery and cremation services
- realigning bach fees into pricing tiers based on occupancy levels, capacity, and location
- aligning staff charge-out rates with staff pay bands for services in regional parks



## Other matters

Feedback on any other matters, including local matters for consideration and the draft Tūpuna Maunga Authority Operational Plan 2025/2026





# Topic 3: Advocacy initiatives to be considered by Governing Body for the Annual Plan 2025/2026

31



## Waitākere Ranges Local Board advocacy (2024 resolutions)

### Waitākere Ranges Heritage Area funding

- urge council to fund Waitākere Ranges Heritage Area projects to an appropriate level
- consider that increase is consistent with council's obligations under section 22 of the Waitākere Ranges Heritage Area Act (WRHAA)

### Te Kawerau a Maki Marae

- fully support council providing significant support for Te Kawerau a Maki's plans to construct a Marae at Te Henga





## Waitākere Ranges Local Board advocacy (2024 resolutions)

### Bus services to outer area

- fully support trial of public transport services to commence with shuttle service to Piha and Huia

### Glen Eden town centre

- support Glen Eden town centre redevelopment being promoted

### West Auckland pool

- fully support the construction of a second and third pool in West Auckland in the Whau and Henderson-Massey local board areas



## Waitākere Ranges Local Board advocacy 2025

- Surf lifesaving funding
- Drowning prevention programmes / funding
- Level crossings



# Topic 4: Input on regional topics in the proposed Annual Plan 2025/2026

**Key steps: local board input on regional topics in the Annual Plan 2025/2026**

**Consider  
consultation  
feedback  
(today)**

**Resolve your  
input on regional  
topics  
(1 May)**

**Present to  
Budget  
Committee  
(14 May)**



# Waitākere Ranges Local Board Input into the Annual Plan 2025/2026

Governing Body workshop 14 May 2025





# Waitākere Ranges Feedback on Regional topics for Annual Plan 2025/2026

Topic	Support / Do not support	Feedback
Overall plan		
Destination management and major events (bed night visitor levy)		
Other rates, fees and charges		



# Pātai?

Item 1

Attachment A