

Date: Tuesday, 29 April 2025
Time: 9:00 am
Meeting Room: Manukau Chambers
Venue: West Annex
Manukau Service Center
Manukau

Ōtara-Papatoetoe Local Board Workshop

OPEN AGENDA

MEMBERSHIP

Chairperson	Apulu Reece Autagavaia
Deputy Chairperson	Vi Hausia
Members	Dr Ashraf Choudhary, QSO, JP Dr Ofa Dewes, MNZM Topou Folau Li'amanaia Lorenzo Kaisara Albert Lim

Darshita Shah
Democracy Advisor

24 April 2025

Contact Telephone: +64211062942
Email: darshita.shah@aucklandcouncil.govt.nz
Website: www.aucklandcouncil.govt.nz

ITEM	TABLE OF CONTENTS	PAGE
1	Ngā Tamōtanga Apologies	2
2	Te Whakapuaki i te Whai Pānga Declaration of Interest	2
3	Local Board Workshop	3

1 Ngā Tamōtanga | Apologies

At the close of the agenda no apologies had been received.

2 Te Whakapuaki i te Whai Pānga | Declaration of Interest

Members are reminded of the need to be vigilant to stand aside from decision making when a conflict arises between their role as a member and any private or other external interest they might have.

Local Board Workshop

File No.: CP2025/07831

Note 1: This workshop has been called by the chairperson in consultation with the staff.

Note 2: No working party/workshop may reach any decision or adopt any resolution unless specifically delegated to do so.

Te take mō te pūrongo Purpose of the report

1. To present the Ōtara-Papatoetoe Local Board workshop agenda for 29 April 2025.

Whakarāpopototanga matua Executive summary

2. Workshops are open by way of recording the session and making the recording available after the workshop.
3. Some sessions may not be open to the public. The staff / chairperson and deputy chairperson decide which sessions are open to the public, depending on the sensitivity of the information being discussed. If a session is not open, a reason will be provided below.
4. Workshops will be recorded and a link to the recording will be included in the published documents.
5. Local Board workshops provide an opportunity for local boards to carry out their governance role in the following areas:
 - a) Accountability to the public
 - b) Engagement
 - c) Input to regional decision-making
 - d) Keeping informed
 - e) Local initiative / preparing for specific decisions
 - f) Oversight and monitoring
 - g) Setting direction / priorities / budget.
6. Workshops do not have decision-making authority.
7. Workshops are used to canvass issues, prepare local board members for upcoming decisions and to enable discussion between elected members and staff.
8. Members are respectfully reminded of their Code of Conduct obligations with respect to conflicts of interest and confidentiality.

Item 3

9. The following will be covered in the workshop:-

Session 1 – 11.00am – 11.45am	
New Work Programme proposals - Tamaki Estuary Restoration Programme and the Bike Hub Activation (Community Cycling Initiatives).	
Presenter/s:	Igancio Quinteras, Robert Sutherland, Donna Carter
Purpose:	Keeping informed
Governance role:	Define board position and feedback
Proposed Outcome/s:	To provide an overview of the new programme proposals for Tamaki Estuary Restoration Programme and the Bike Hub Activation (Community Cycling Initiatives). To receive feedback from the members about the proposals and whether they would be interested in funding these initiatives.
Attachment/s:	A - Ōtara-Papatoetoe Community Cycling Initiatives 2025-2026 B - Ōtara -Papatoetoe Tamaki Estuary Restoration Programme

Ngā tāpirihanga Attachments

No.	Title	Page
A	Ōtara-Papatoetoe Community Cycling Initiatives 2025-2026	5
B	Otara-Papatotoe Tamaki Estuary Restorarion Programme	17

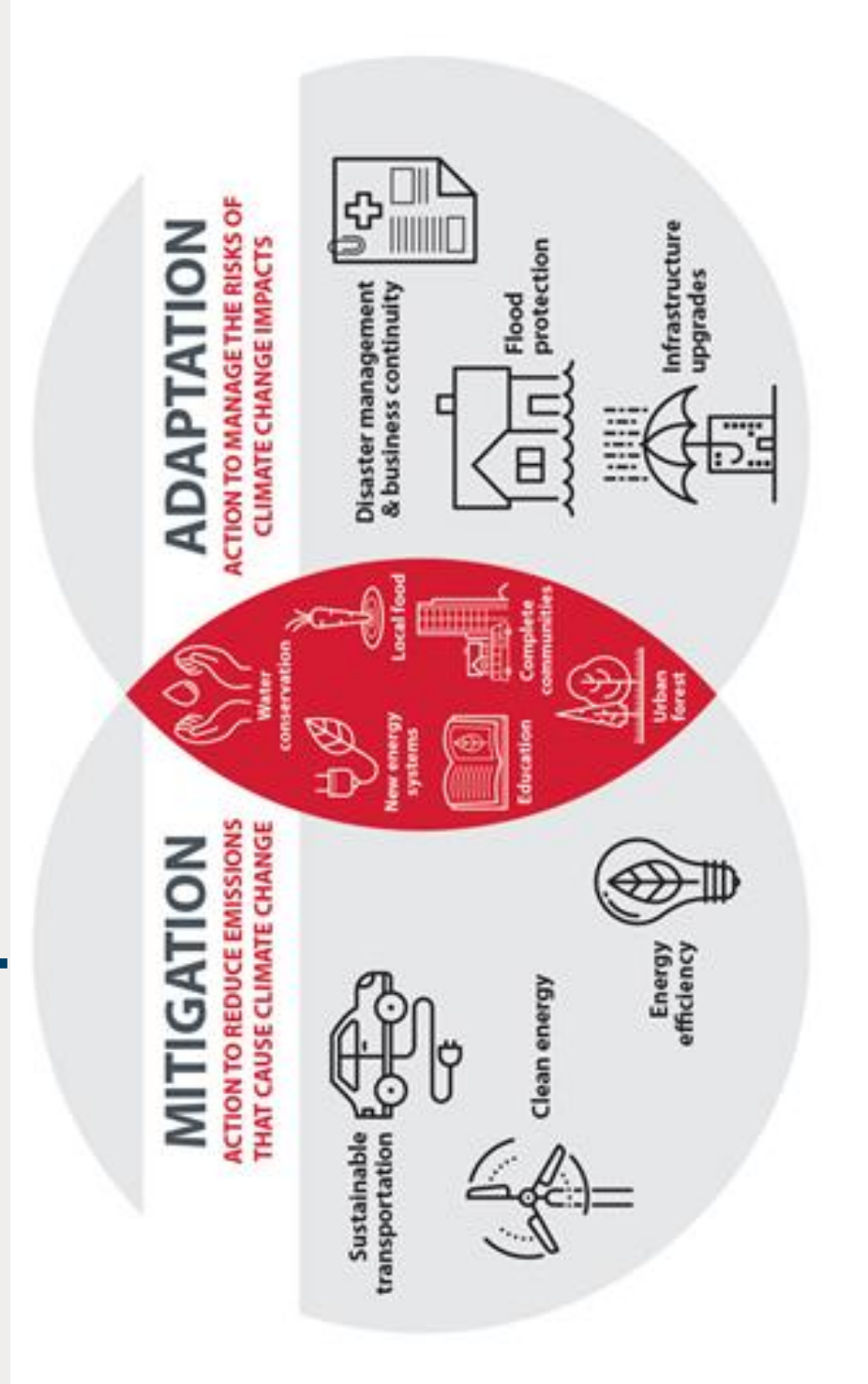


Ōtara-Papatoetoe Community Cycling Initiatives 2025/2026

Robbie Sutherland, Climate Action Advisor

29 April 2025

Climate action programmes reduce emissions and enable adaptation



Co-benefits of local climate action programmes





Benefits of community cycling programmes

- Good for the climate
- Helps keep air and water clean
- Good for physical health
- Good for mental health
- Keeps people connected
- Reduces noise pollution
- Supports the economy
- Kids love cycling
- Reduces congestion
- Reduces transport costs



Community Cycling Initiatives and Bike Hub Activation proposal

Enable continued provision of community cycling initiatives that Auckland Transport can no longer fund:

- Kids learn to ride training (public or in schools)
- Adult bike skills events (learn to ride, on-road safety, bike maintenance skills)
- Guided rides
- Themed self-guided ride maps
- Community-led events
- Bike fix at schools, community centres and events

Suite of community cycling initiatives can further activate the Manukau Bike Hub



Status of Auckland Transport funding

Activity	Description	Status
Bike Ready Grade 1	Basic off-road skills training to year 5-6 children in schools.	Reduced funding
Bike Ready Grade 2	On-road skills training to year 7-8 children in schools.	Unfunded
Existing Bike Hubs	Ongoing operation of bike hubs to support communities with basic bike repairs, advice and sales.	Reduced funding - Core operational costs only
New Bike Hubs	Establish new bike hubs in partnership with community operators.	Unfunded
Kids Learn to Ride	Community based learn to ride events for families with young children.	Reduced funding
Adult Bike Skills	Training sessions for adults including learn to ride, on-road safety and bike maintenance.	Unfunded
Guided Rides	Guided rides to showcase cycling routes and build confidence with a qualified instructor.	Unfunded
School Bike Trains	An organized bike ride picking up and dropping off children on the way to and from school. Similar to a Walking School Bus.	Unfunded
Community-led Initiatives	Requests to support community-led initiatives aimed at getting more people riding and improving safety.	Unfunded



Planned Auckland Transport Activities

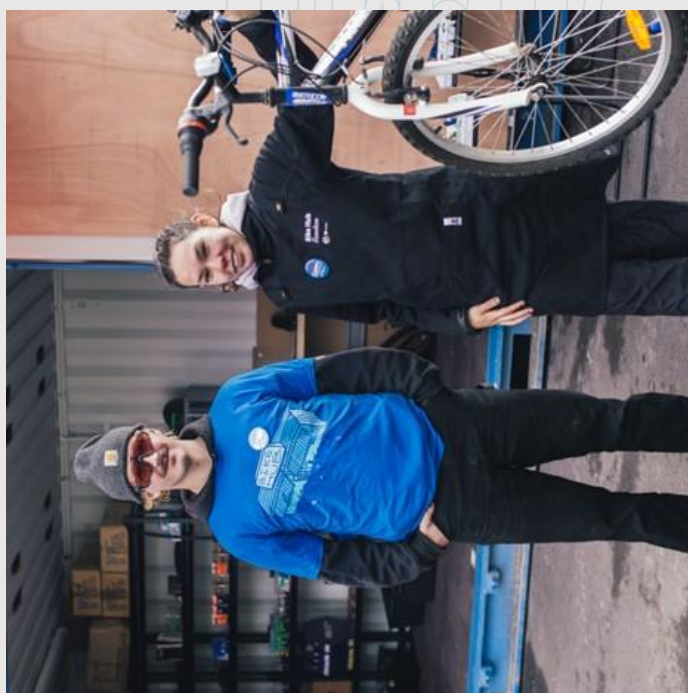
Ōtara-Papatoetoe Local Board

Bike Ready Grade 1

- Auckland Transport will provide basic off-road cycle skills training to 755 year 5-6 children in schools.
- 755 equates to approximately 55% of eligible children in Ōtara-Papatoetoe receiving training within a 2-year period.

Bike Hub Manukau

- Auckland Transport will continue to fund the core operational costs at existing levels. This ensures the Bike Hub, operated by EcoMatters, can open 16 hours per week and continue to provide basic bike fixes and bike sales.



Overview of Costs

Activity	Cost	Considerations
Bike Ready Grade 1 (Learn to Ride in Schools)	\$70 per student	Delivery at a school with average size roll (based on 100 year 5-6 students) would cost approximately \$7,000.
Support for existing Bike Hubs	70k per year operating costs	Basic day to day operational costs are covered by AT. Additional funding would allow for more events, activations and engagement activities.
New Bike Hub	110k set up (plus 70k per year operating costs)	Set up will take approximately 1 year to gain approvals, consents, design and construction.
Kids Learn to Ride Events	\$2,000 per event	We would typically deliver a series of 6 monthly events over summer: \$12,000
Adult Bike Skills (learn to ride, on-road safety and bike maintenance)	\$1,000 to \$3,000 per event	Costs vary based on the activity and number of participants
Guided Rides	\$2,000	These differ to community-led rides, as they are run by qualified instructors who can coach participants. They can be tailored to local paths and desired themes, e.g. Halloween or Diwali.
School Bike Trains	25k per year	Covers a community-based coordinator to set up and facilitate a bike train on behalf of a school.
Community-led Initiatives	10k to 100k	A fund for community groups to apply for cycling focused activities and events. Activities can include events, fun rides, skills sharing, bike fix sessions etc.

* Costs are indicative.



Recommendations from Auckland Transport

Ōtara-Papatoetoe Local Board

Should the local board be interested in funding cycling activities within the local area, AT would recommend the following:

Kids Learn to Ride Events

- AT recommends the local board fund 12k for a series of 6 events over summer focused on teaching kids to ride bikes.

Bike Hub Manukau

- AT will continue to fund the core operational costs.
- AT recommends the local board fund 25k towards additional events, activations, comms and outreach to help establish the Bike Hub as a key community asset and increase its reach and impact.

Cycle Skills Training in Schools

- To increase the number of children who receive cycle skills training at schools, it will cost approximately 7k per 100 children. Training is designed for year 5-6 children. School rolls vary greatly.

Community-led Initiatives

- AT recommends that the local board make a pot of funding available for community groups to deliver cycling focused activities and events. Community groups ambitions are all different and the funding required can range in value. One off events can often be delivered for 2-10k, whilst programmes of activities are often 10-30k.



Priorities for local board support

The proposed \$25,000 programme will enable:

- Bike Ready Grade 1 training for 300 year 5 and 6 students (\$21,000)
- Kids Learn to Ride - two events (\$4,000)
- More Kids Learn to Ride events and/or Adult Bike Skills training could be provided if additional funds are available

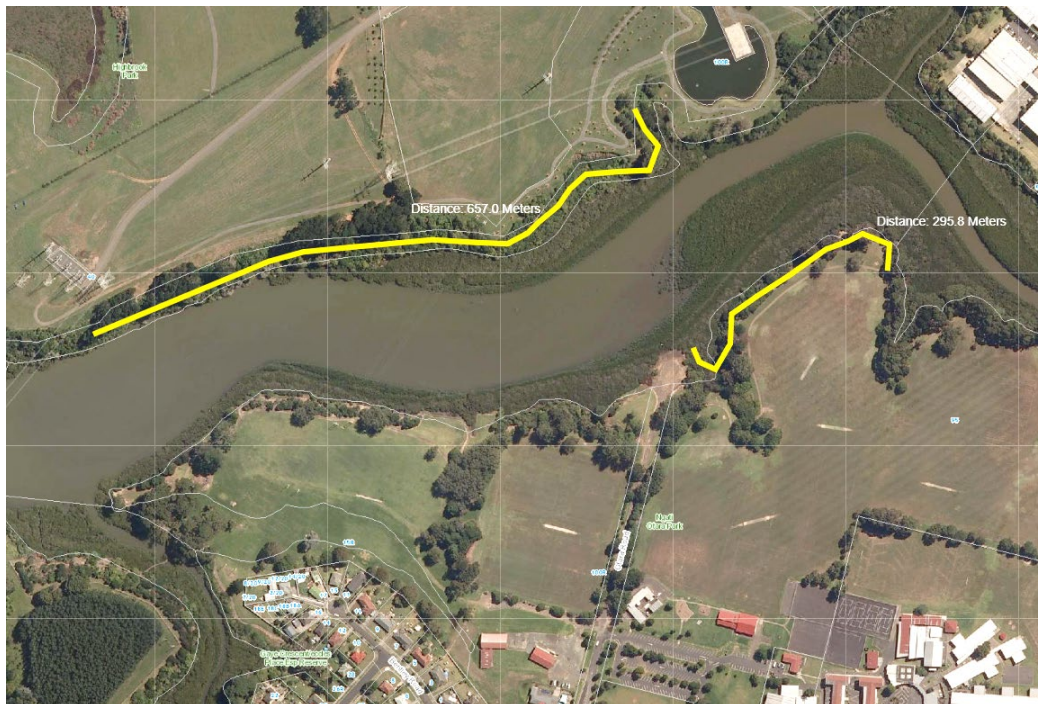


Questions and Discussion



PROPOSED PROGRAMME OF WORK ŌTARA PAPATOETOE LOCAL BOARD

LOCATION 1: Ōtara Lake margins



A mix of steep coastal banks and gentler sloped banks which are fronted by mangrove thickets along the northern margin of Ōtara Lake (Highbrook Park) and a section of Ngati Ōtara Park on the southern lake margin

All sites within these two proposed project areas are currently smothered with tree privet (*Ligustrum lucidum*, introduced in the 1940s). The stands of tree privet are mature, dense and highly competitive which prevents any indigenous native tree species becoming established, either from seed introduced by birds or planted.

TIMEFRAME AND COST

The short-term plan outlined below is based on four objectives:

- 1) Stage 1 control/elimination of environmental weeds from planting areas (and nearby dispersal sites).
- 2) Removal of privet trees at 5 to 7m spacings to provide openings for native canopy trees.
- 3) Continue to suppress resurgence of highly invasive weed species and extend weed control boundary to include the 'spreaders' – species that pose the biggest threat of re-seeding the stage 1 restoration area.
- 4) Work with hapori Māori, local businesses, community groups, clubs and individuals to promote long-term guardianship through partnerships that support ongoing restoration and maintenance.

Year 1 – 2025/26 – Restoration Plan

Activity	Notes
Approvals	<ul style="list-style-type: none"> Landowner approvals submitted to appropriate Auckland Council dept
Weed control	<ul style="list-style-type: none"> Survey site and determine priorities for weed control Use appropriate methods to efficiently and effectively suppress herbaceous and remove woody weeds from coastal margins and accessways through work areas Continue suppression of weed regrowth/reshooting and seedlings in areas containing 'difficult' weed species
Planting preparation, planting and maintenance	<ul style="list-style-type: none"> Work with hapori Māori, community groups, sports teams to finalise planting preparation and undertake planting in selected areas Maintain planting areas using appropriate techniques including application of selective herbicides, cut & paste, drill & fill etc. Mulches are not effective for weed suppression in this area but are used to improve soil health and water retention. Start weed control of areas adjacent to the main planting site(s)
Monitoring and planning	<ul style="list-style-type: none"> Assess effectiveness of weed management and planting activities and develop a detailed plan for year 2 & 3

Mana whenua engagement plan

The Trust's Māori advisory board, He Kōtuku, will be utilised to seek initial advice on the project and approach/requirements for mana whenua engagement. Based on this initial advice, a plan for either/both hapori Māori or mana whenua engagement will be created and executed.

Year 1 Budget:

Note: All estimates are approximate and subject to change based on actual requirements and unforeseen challenges encountered during the project.

Item	Description	Cost
OWL Project Manager	Application for landowner approvals Reporting and financial management	\$1,000
Stream team Manager	Overall project management – including management of Stream Team, liaison with Auckland Council Planning and initial site surveys	\$5,000
Stream Team	Labour costs to complete restoration work and weed control	\$25,000
Herbicides	Purchase of herbicide for weed control	\$1,500
Fuel costs and other consumables	Fuel costs for van, equipment and purchase of other consumables required for the project	\$2,000
Machinery hire	Hire of specialised equipment for Stream team to undertake removal of woody weeds (ie chipper hire)	\$3,000
Native plants	Establish native shrubs and trees in selected sites	\$6,000
Community engagement	Time for Ōtara Community Coordinator to coordinate community engagement activations – including costs for community events	\$2,500
Mana whenua engagement	Cost for engaging with mana whenua – koha costs for the Trust's Māori advisory board He Kōtuku. (Time for the Trust's Kaitakawaenga for this project would be absorbed by the OPLB's contribution to the Kaitakawaenga's work through the overall 25-26 OPLB funding for the Trust	\$3,000

Arborist & digger contractor	Hire of specialised labour and equipment to undertake removal of woody weeds	\$11,000
Total		\$60,000.00

Year 1 Budget (scaled):

A scaled version of the project budget has been provided – this budget will still allow for work in the two proposed areas to commence, however the extent of the completed work will be reduced with fewer hours available for the Stream team and external contractors (arborists). Community engagement and mana whenua engagement costs will roughly remain the same regardless of the scale of the project.

Item	Description	Cost
OWL Project Manager	Application for landowner approvals Reporting and financial management	\$1,000
Stream team Manager	Overall project management – including management of Stream Team, liaison with Auckland Council Planning and initial site surveys	\$5,000
Stream Team	Labour costs to complete restoration work and weed control	\$16,000
Herbicides	Purchase of herbicide for weed control	\$1,500
Fuel costs and other consumables	Fuel costs for van, equipment and purchase of other consumables required for the project	\$1,000
Machinery hire	Hire of specialised equipment for Stream team to undertake removal of woody weeds	\$2,000
Native plants	Establish native shrubs and trees in selected sites	\$3,000
Community engagement	Time for Ōtara Community Coordinator to coordinate community engagement activations – including costs for community events	\$2,000
Mana whenua engagement	Cost for engaging with mana whenua – koha costs for the Trust’s Māori advisory board He Kotuku.	\$2,500
Arborist & digger contractor	Hire of specialised labour and equipment to undertake removal of woody weeds	\$6,000
Total		\$40,000.00

Further reductions

Item	Description	Cost
OWL Project Manager	Application for landowner approvals Reporting and financial management	\$1,000
Stream team Manager	Overall project management – including management of Stream Team, liaison with Auckland Council Planning and initial site surveys	\$4,500
Stream Team	Labour costs to complete restoration work and weed control	\$12,000
Herbicides	Purchase of herbicide for weed control	\$1,000
Fuel costs and other consumables	Fuel costs for van, equipment and purchase of other consumables required for the project	\$1,000
Machinery hire	Hire of specialised equipment for Stream team to undertake removal of woody weeds	\$1,000
Native plants	Establish native shrubs and trees in selected sites	\$2,500
Community engagement	Time for Ōtara Community Coordinator to coordinate community engagement activations – including costs for community events	\$1,500

Mana whenua engagement	Cost for engaging with mana whenua – koha costs for the Trust’s Māori advisory board He Kotuku.	\$2,500
Arborist & digger contractor	Hire of specialised labour and equipment to undertake removal of woody weeds	\$3,000
Total		\$30,000.00

Year 2 2026/27 – Restoration Plan

The scale of the project for year 2 (and 3) would be subject to the funding received for year 1 and can be altered to match funding from OPLB and partnership contribution(s) and/or other external funding.

Activity	Notes
Weed control	<ul style="list-style-type: none"> Methodically remove remaining woody weeds on both sides of the lake to enable planting in remaining unplanted areas Start working with volunteers to control weeds within planted areas and maintain canopy tree stakes/shelters. Volunteers will be supervised and trained how to select and the most effective weed control techniques with the aim of initiating group(s) of skilled independent helpers focused on specific maintenance tasks. Further extension of weed control boundaries to suppress high risk invasive weeds
Planting preparation, planting and maintenance	<ul style="list-style-type: none"> Final spot spraying planting sites Complete planting native trees, shrubs and sedges to fill remaining spaces in the stage 1 area. Some planting may be possible in adjacent areas (where weed control boundaries have been extended) Continue with targeted weed suppression and elimination and maintenance tasks with volunteers
Monitoring and planning	<ul style="list-style-type: none"> Assess effectiveness of weed management and planting activities and develop a detailed plan for year 3

Year 3 – 2027/28

As for year one (and subsequently year 2), the scale of the project is based on funding and can be altered to match funding from OPLB and partnership contribution(s) and/or other external funding.