

Date: Tuesday 29 April 2025
Time: 12.30pm
Venue: Ground Floor – Hawiti Building
 6-8 Munroe Lane
 Albany

Hibiscus and Bays Local Board

OPEN ATTACHMENTS

ATTACHMENTS UNDER SEPARATE COVER

ITEM	TABLE OF CONTENTS	PAGE
8.2	Deputation - Manly Esplanade neighbours	
	A. Manly Esplanade Neighbours Presentation	3
11	Proposed changes to the draft Manaaki Tāmaki Makaurau: Auckland Open Space, Sport and Recreation Strategy	
	A. Feedback analysis report	27
	B. Manaaki Tāmaki Makaurau: Auckland Open Space, Sport and Recreation Strategy (final draft version with track changes)	83
	C. Putting things into practice – scenarios, examples of good practices and applications of the two open space provision option packages (with maps)	183
	D. Preliminary findings for improving advice to local boards	209
12	Public feedback on proposal to amend dog policy and bylaw	
	A. Summary of public feedback to the proposed changes to the dog policy and bylaw	211
	B. Public feedback from people in Hibiscus and Bays Local Board area	299
13	Hibiscus and Bays Play Plan 2025	
	A. Hibiscus and Bays Play Plan 2025	301
	B. Hibiscus and Bays Play Plan 2025 Supplementary Information	339
14	East Coast Bays Community Centre – approval of developed design to refurbish building	
	A. Developed design for East Coast Bays Community Centre - refurbish building at 2 Glen Road, Browns Bay	367

Note: The attachments contained within this document are for consideration and should not be construed as Council policy unless and until adopted. Should Councillors require further information relating to any reports, please contact the relevant manager, Chairperson or Deputy Chairperson.

	B. Option assessment for the East Coast Bays Community Centre refurbishment	431
15	Allocation of decision-making responsibilities for council-controlled organisation activities coming in house	
	A. Proposed changes to the allocation table of decision-making responsibilities of Auckland Council's Governing Body and local boards	433
	B. List of current Eke Panuku projects in the local board area	451
16	Annual Plan 2025/2026: local board consultation feedback and input to regional topics	
	A. Analysis: North Harbour Stadium Question (Hibiscus and Bays and Upper Harbour Local Boards)	453
	B. 'Have Your Say' event poster	491
17	Record of Urgent Decision: Local board input to Auckland Council's submission on the Land Transport Management (Time of Use Charging) Amendment Bill	
	A. Urgent Decision: Hibiscus and Bays Local Board input to Auckland Council's submission on the Land Transport Management (Time of Use Charging) Amendment Bill	495
19	Hōtaka Kaupapa - Policy Schedule for April 2025	
	A. Hōtaka Kaupapa – Policy Schedule for April 2025	497

Personal Security & Transport Safety in Manly Esplanade, Browns Bay

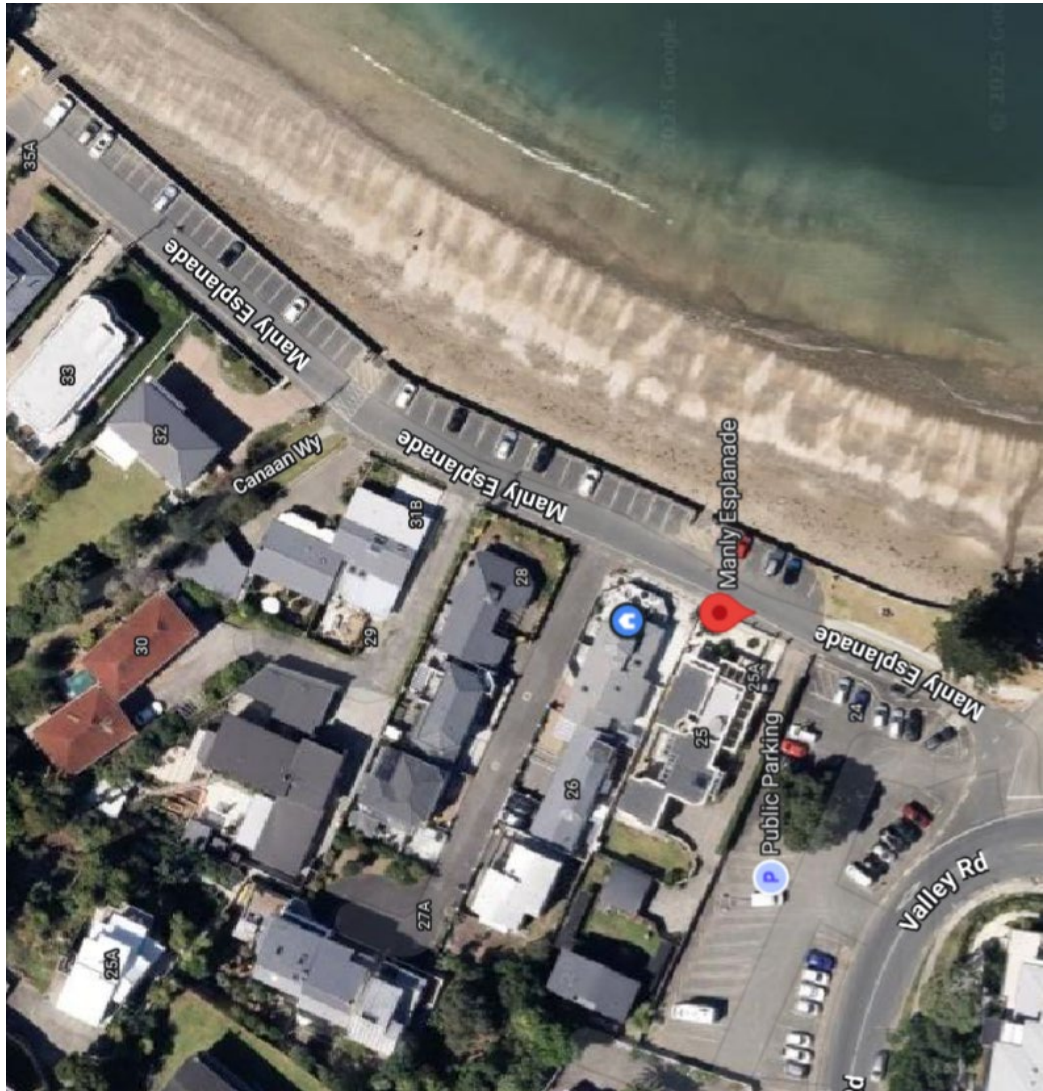
Presentation by Manly Esplanade residents to the
Auckland Council Hibiscus and Bays Local Board

29 April 2025

Outline of our presentation

- Introduction to Manly Esplanade
- Our personal security and safety concerns
- Our community transport safety concerns
- Our ideas of solutions
- Questions

Manly Esplanade



- Manly Esplanade is a local, “no exit” street accessed from Valley Road
- Serves 22 residential properties and 47 car parking spaces
- Parking spaces have no time restriction and are heavily used, as is the adjacent Valley Road parking area

Manly Esplanade



- Cross section of 11.2 m allows for
 - 4.6 m for parking space
 - 6.0 m for vehicles
 - 0.6 m and pedestrians
- There is not enough space to have vertical separation between pedestrians so the space acts as a “shared space”
- The pedestrian path on Manly Esplanade forms part of the East Coast Bays Coastal Walk, between Narrow Neck Beach and Long Bay
- High demand for use of this facility by **ALL** types pedestrians especially during summer and on the weekends

Manly Esplanade

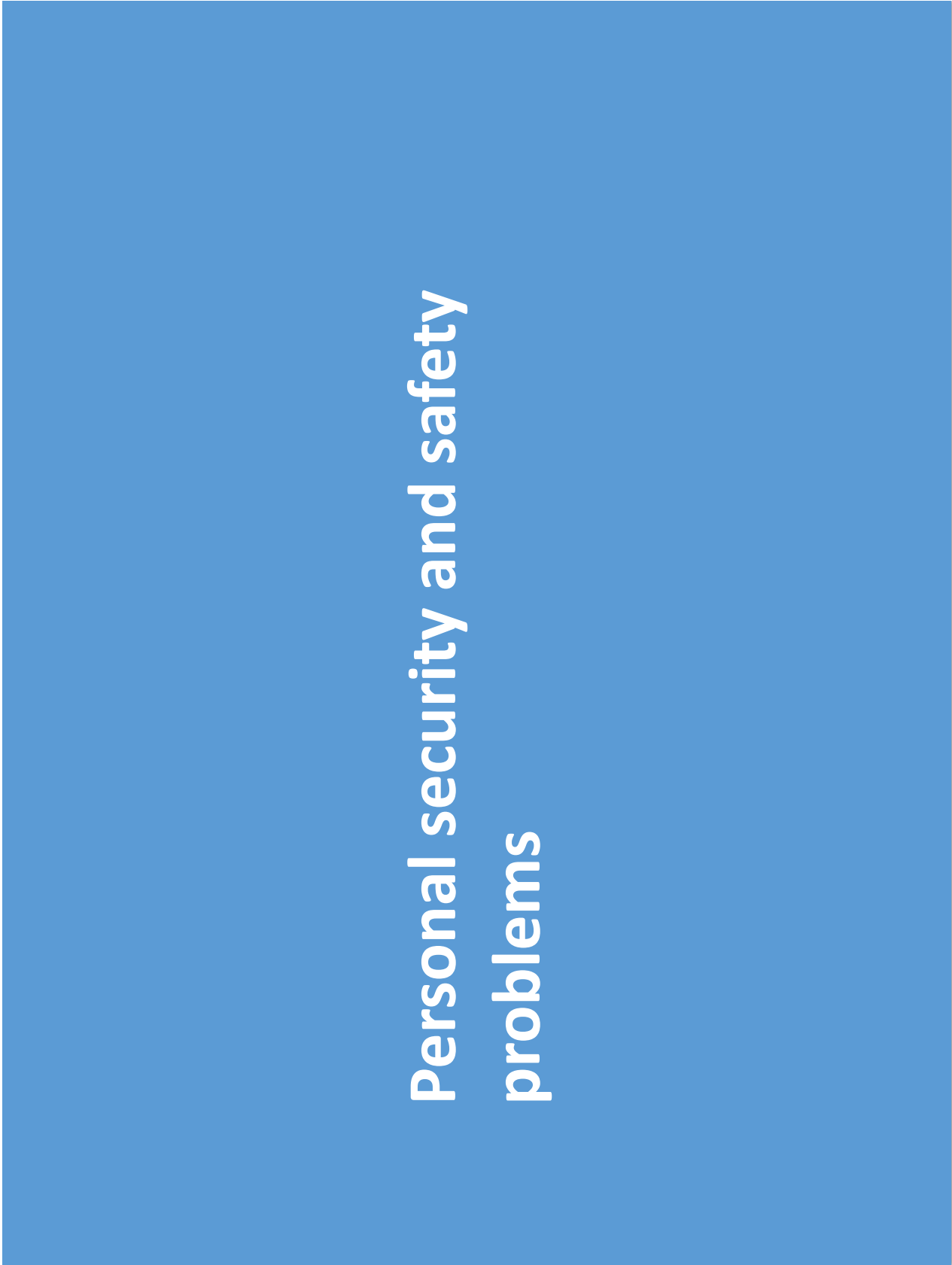
- Speed limit of 30 km/hr
- Access from Valley Road as one-way section
- Two speed humps, although the northern one is ineffective as the hump has been flattened when works were completed in the street



Manly Esplanade

- Alcohol ban, supported by confusing signs and faded road markings
- Random signs focused on cars





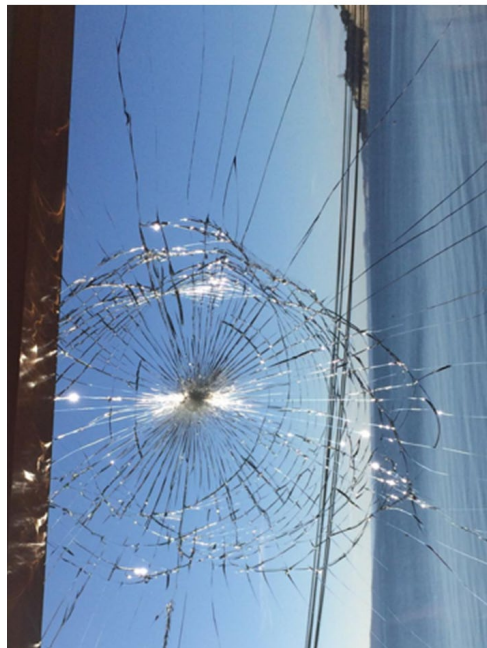
Item 8.2

Attachment A

Attachment A
Item 8.2

Personal security and safety problems we encounter

- Hear from Irene Hemmingsen, long time resident of the street
- Damage to properties



Personal security and safety problems we encounter

- Threats to residents
- Excessive speeds and safety to our community



- Signage and markings
- Noise

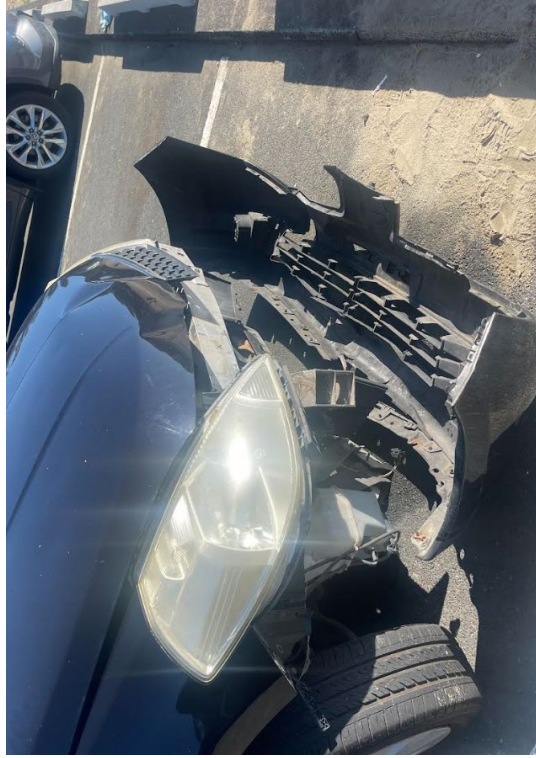
Item 8.2

Attachment A

Community transport safety problems

Community transport safety problems we encounter

- Excessive speed as speed humps are ineffective
- Crashes and damage



Transport safety problems we encounter

- The overall street design does not ensure a low speed “shared space” environment
- Cars dominate the space with no vertical separation between pedestrians and cars



Community transport safety problems we encounter

- Illegal parking at the northern end of the street, resulting in no area for cars to turn, congestion and blocked accesses
- Cars reversing over pedestrian walkway



Attachment A
Item 8.2

Community transport safety problems we encounter

- Very limited sight distance entering the one-way section of the street from Valley Road blocked by cars and an electrical box
- It is not clear who has right of way in this single lane section
- Lots of near misses, and crashes in this area





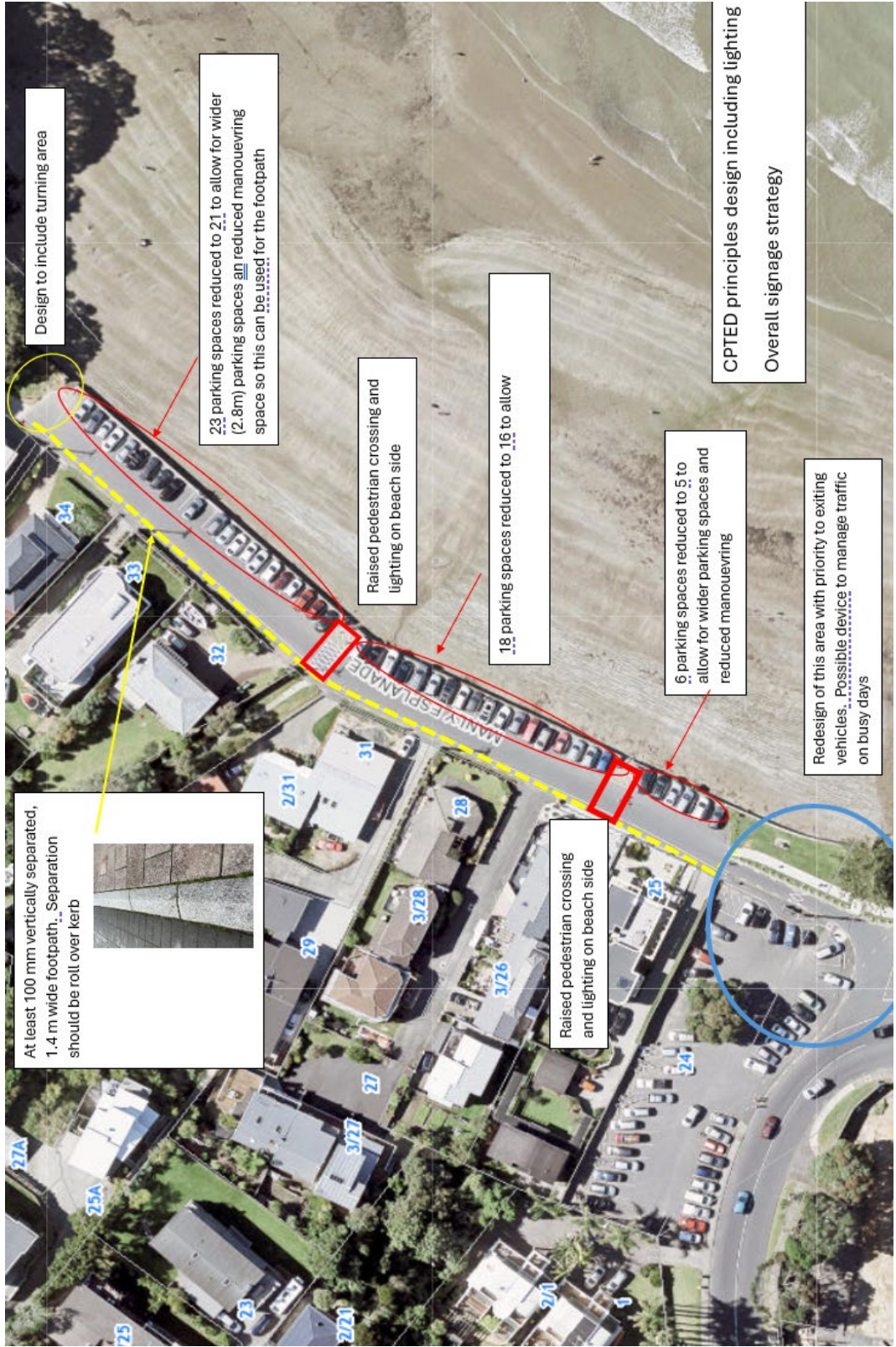
Item 8.2

Attachment A

Our longer term solution

- Redesign and upgrade to Manly Esplanade (including the Valley Road parking area) focused on **pedestrians over cars** and **Crime Protection through Environmental Design (CEPTD)** principles
- Project is included in Council's Long Term Plan
- The design is based on
 - Delivering a shared space, very low speed environment (15km/hr) and vertical separation for pedestrians
 - Could include raised pedestrian crossing tables linking beach access to Canaan walkway
 - Clear and safe access from Valley Road (including pedestrian links)
 - Overall clear signage and road marking strategy for the street
 - Improved lighting that discourages criminal behaviour at night
 - During busy times, the street could be temporary closed to public traffic (as occurs on Long Bay reserve)

Our longer term solution



Item 8.2

Attachment A

Our short term solution

Our short term solution

Speed management

- Implementation of “low cost” speed management resulting in 15 km/hr speed environment



Our short term solution

Signs, markings and lighting

- Review and upgrade of all signage, road markings and lighting in the street focusing on
 - Pedestrian safety
 - Alcohol ban and no camping overnight
 - Lighting focused on the beach to discourage antisocial behaviour
 - Providing for a no stopping at all times turnaround area at the northern end of the street
 - Legal signage requirements

Valley Road access

- Review of Valley Road access, possible low cost mitigation of road markings, signage and mirrors

Our short term solution

CCTV cameras

- Installation of CCTV cameras to discourage and record antisocial behaviour, drug and alcohol use

Review and management of the street

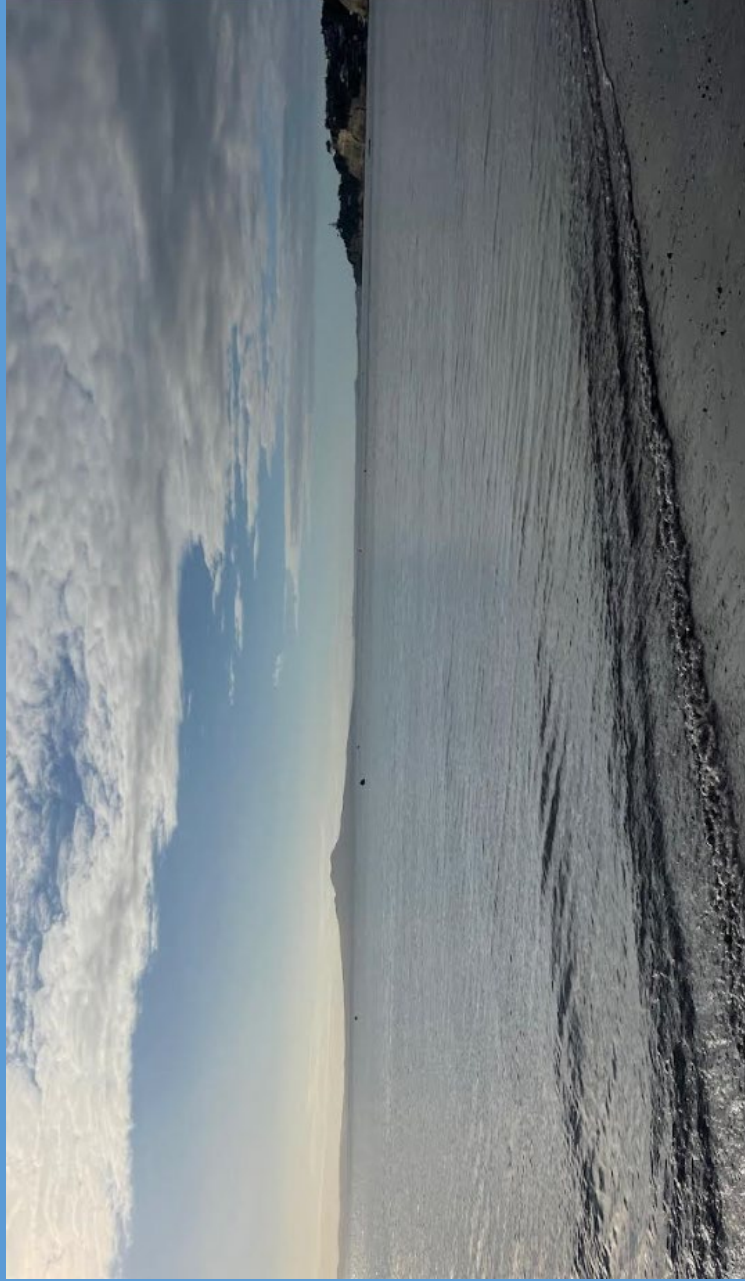
- Ongoing review of security and personal safety aspects as outlined above
- If these problems are not alleviated, implement “Residents Only” parking permits for Manly Esplanade and Valley Road parking area 10 pm to 5 am, or
- manage access to the street and parking areas between these times



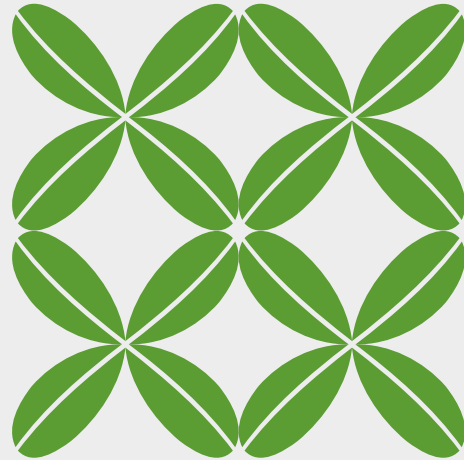
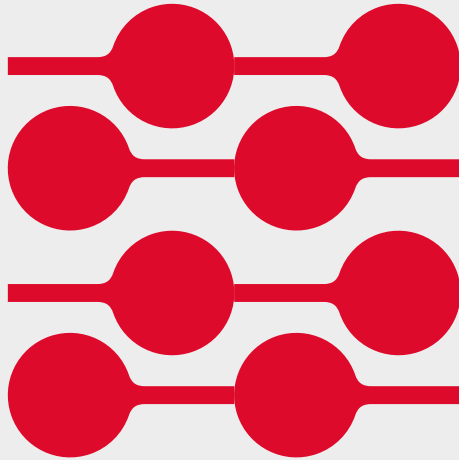
Closing remarks

- We suggest that our short term solutions be included in the Browns Bay Town Centre Safety Improvements Project
- We want to work with Council, Auckland Transport and the police to find solutions to the many safety and security problems being experienced in the Manly Esplanade area
- A new design of this area will benefit not only the residents of the street but all of the Browns Bay community, especially those walking between the Town Centre and the northern areas of Browns Bay and Torbay

Thank you, questions please



Attachment A



Draft Manaaki
Tāmaki Makaurau:
Auckland Open
Space, Sport and
Recreation
Strategy



**Feedback
analysis**

April 2025



Executive Summary

1. Auckland Council sought public feedback on the draft Manaaki Tāmaki Makaurau: Auckland Open Space, Sport and Recreation Strategy. The consultation ran from 10 February to 10 March 2025.
2. The strategy constitutes a refreshed and consolidated approach to planning and investment for open spaces and sport and recreation opportunities. Its development was guided by the Open Space, Sport and Recreation Joint Political Working Group, advisory and Māori rūpū and key council kaimahi, as well as targeted engagement with partners and key stakeholders.
3. This report analyses the 149 pieces of feedback, as well as the 253 responses from the People’s Panel survey carried out in December 2024.
4. It outlines the proposed changes to the draft strategy as a result of the consultation feedback.

Feedback on the draft strategy

5. There is strong overall support for the draft strategy.
6. There is strong support for the five draft strategic directions, with the highest support for strategic direction 5: support Aucklanders to live healthy, active lives.
7. There is strong support for the four draft investment principles, with the highest support for principle 1: take a benefits-led approach to improve the holistic wellbeing of people, places and the environment.
8. There is strong support for all three policies, with the highest support for Policy 1: making the most of our open spaces.
9. Submitters prefer a capacity-focused approach (option package 2) rather than a high-density-focused approach (option package 1) when considering open space provision standards.
10. Qualitative feedback mainly speaks to the importance of equitable and inclusive access to open spaces, health and wellbeing, addressing gaps in the network, maintaining and utilising existing resources, integrated urban development and environmental sustainability.

We propose changes to the draft strategy

11. Staff propose changes to the draft strategy, the most significant being:
 - more explicitly emphasising the importance of equity and accessibility in providing open spaces and play, sport and recreation opportunities (including in the strategic directions, investment principles and policies)
 - greater emphasis on the importance of environment and biodiversity outcomes (including in the investment principles and Policy one)
 - greater emphasis on the purpose and benefits of regional parks (in Policy two)
 - including the capacity-focused approach (Option package two) for open space provision standards (in Policy two)
 - refining the strategic directions based on a range of other consultation feedback
 - making the decision-making responsibilities of local boards clearer
 - clarifying the meaning of ‘value for money’

Placeholder for Attachment B

Public feedback on proposal to amend dog policy and bylaw

Public feedback from people in the Hibiscus and Bays Local Board area

Can be viewed at the following link:

[Dog policy, bylaw and regional and local park access rules | AK Have Your Say](#)

Meeting Type	Month	Topic	Purpose
Business Meeting	April	Allocation of decision-making responsibilities for Council Controlled Organisation activities coming in house	Input into regional decision making
Business Meeting	April	Annual Budget 2025/2026	Setting direction, priorities and budgets
Business Meeting	April	Dogs Bylaw and Policy	Input into regional decision making
Business Meeting	April	Open Space Policy Framework Refresh	Input into regional decision making
Business Meeting	April	Play Plans	Local initiatives and specific decisions
Business Meeting	April	Time of Use Charging	Input into regional decision making
Business Meeting	May	Local dog access rules	Local initiatives and specific decisions
Business Meeting	May	Shoreline Adaptation Plans	Input into regional decision making
Business Meeting	May	Quarter 3 - 2024/2025 performance report	Oversight and Monitoring