



Date: Wednesday, 30 April 2025
Time: 11:30 am
Meeting Room: Waiheke Local Board Office
Venue: 10 Belgium
Ostend
Waiheke Island

Waiheke Local Board Workshop

OPEN AGENDA

MEMBERSHIP

Chairperson Cath Handley
Deputy Chairperson Kylee Mathews
Members Bianca Ranson
Robin Tucker
Paul Walden

Amelia Lawley
Democracy Advisor

24 April 2025

Contact Telephone: 027 261 8595
Email: amelia.lawley@aucklandcouncil.govt.nz
Website: www.aucklandcouncil.govt.nz

Email Waihekelocalboard@aucklandcouncil.govt.nz for the link to observe the workshop online.

The workshop will be recorded and the link included in the proceedings which can be found at <https://infocouncil.aucklandcouncil.govt.nz/>

ITEM	TABLE OF CONTENTS	PAGE
1	Ngā Tamōtanga Apologies	Error! Bookmark not defined.
2	Te Whakapuaki i te Whai Pānga Declaration of Interest	Error! Bookmark not defined.
3	Local Board Workshop	3

Karakia Timatanga – Whakataka te Hau

Whakataka te hau ki te uru	Cease oh winds of the west and the south
Whakataka te hau ki te tonga	Let the bracing breezes flow
Kia mākinakina ki uta	over the land and the sea
Kia mātaratara ki tai	Let the red-tipped dawn come
E hī ake ana te atakura	with a sharpened edge
He tio, he huka, he hauhū	a touch of frost
Tihei Mauri Ora!	A promise of a glorious day!

Agenda Items

1 Ngā Tamōtanga | Apologies

At the close of the agenda no apologies had been received.

2 Te Whakapuaki i te Whai Pānga | Declaration of Interest

Members are reminded of the need to be vigilant to stand aside from decision making when a conflict arises between their role as a member and any private or other external interest they might have.

Local Board Workshop

File No.: CP2025/07570

Note 1: This workshop has been called by the chairperson in consultation with the staff.

Note 2: No working party/workshop may reach any decision or adopt any resolution unless specifically delegated to do so.

Te take mō te pūrongo Purpose of the report

1. To present the Waiheke Local Board workshop agenda for 30 April 2025.

Whakarāpopototanga matua Executive summary

2. Most workshops are open to the public to attend as observers in person or online.
3. Some sessions may not be open to the public. The staff / chairperson and deputy chairperson decide which sessions are open to the public, depending on the sensitivity of the information being discussed. If a session is not open, a reason will be provided below.
4. Workshops will be recorded and a link to the recording will be included in the published documents available at <https://infocouncil.aucklandcouncil.govt.nz/>
Email Waihekelocalboard@aucklandcouncil.govt.nz for an MS Teams link to **observe** the workshop online.
5. Local Board workshops provide an opportunity for local boards to carry out their governance role in the following areas:
 - a) Accountability to the public
 - b) Engagement
 - c) Input to regional decision-making
 - d) Keeping informed
 - e) Local initiative / preparing for specific decisions
 - f) Oversight and monitoring
 - g) Setting direction / priorities / budget.
6. Workshops do not have decision-making authority.
7. Workshops are used to canvass issues, prepare local board members for upcoming decisions and to enable discussion between elected members and staff <Enter summary>
8. Members are respectfully reminded of their Code of Conduct obligations with respect to conflicts of interest and confidentiality.
9. The following will be covered in the workshop:

Session 1 – 11.30am – 12.00pm

Tawaiperiera Stormwater Channel Maintenance update

Presenter: Manju Jose – Healthy Waters Specialist, Resilience and Infrastructure
 Kartik Bhat – Relationship Advisor, Resilience and Infrastructure

Purpose: Review programme / project proposals

Governance role: Oversight and monitoring

Proposed Outcome: Members will be presented with a proposal to mitigate silt accumulation in the stormwater channel.

Attachments: Attachment A (see below)

12.00pm – 1.00pm LUNCH

Extraordinary Business meeting – 1.00pm – 2.00pm

To receive feedback and approve Annual Budget input, and fees and charges.

Session 2 – 2.00pm – 2.30pm

Community Wellbeing update

Presenters: Fiona Gregory – Community Broker

Purpose: Review progress with projects

Governance role: Keeping informed

Proposed outcome: Members will be updated on Community Wellbeing work programme and activities

Attachments: Attachment B (see below)

Session 3 - 1.00pm – 2.00pm

Rangatahi Rōpū update

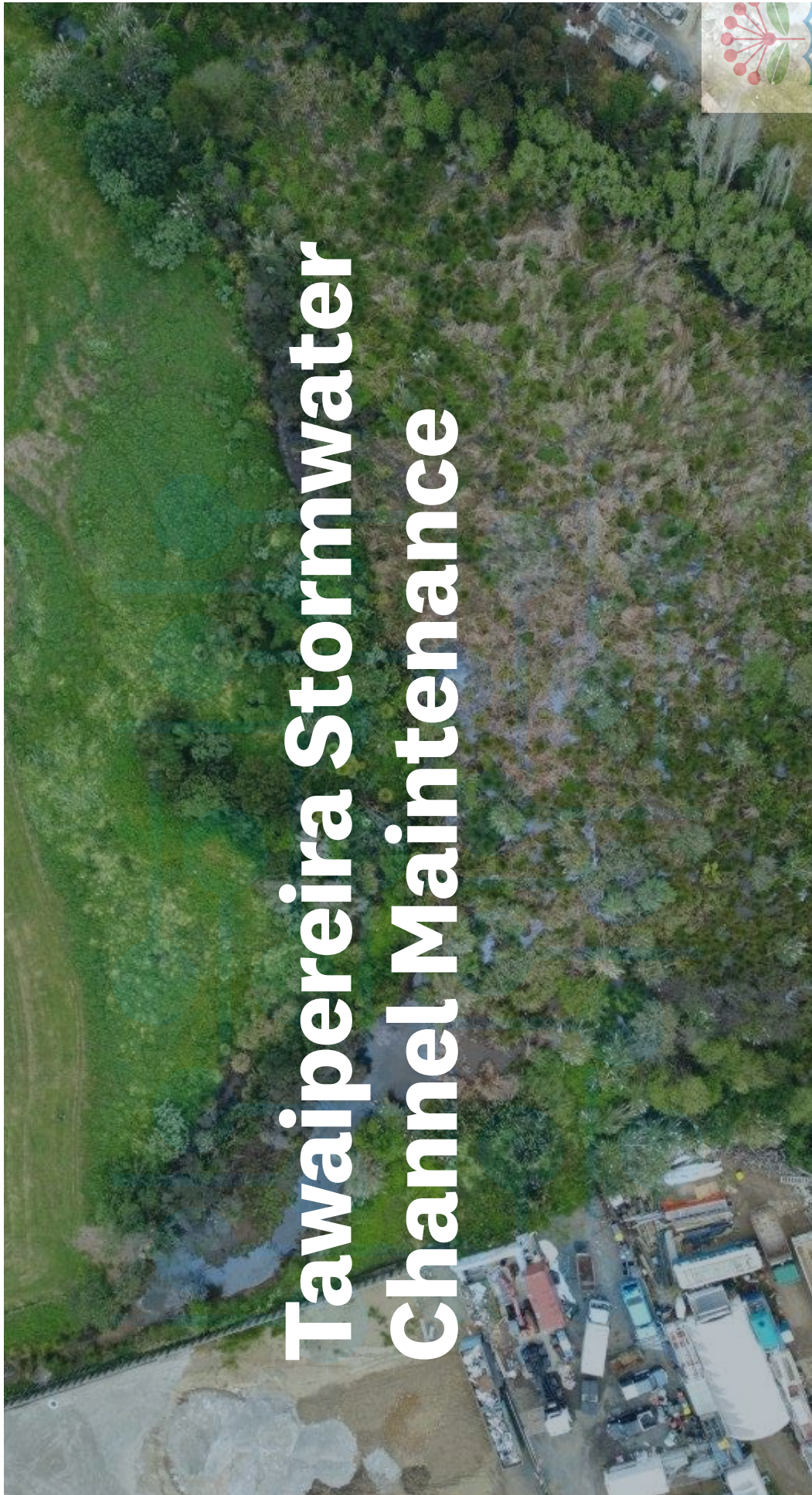
Presenters: Ella Taka-Smith, Huia Te Ahomiro, Lola Farquhar, Ria Town
 Jo Nuttall – Manager, Waiheke Adult Learning

Purpose: Receive update on progress

Governance role: Keeping informed

Proposed outcome: The members will receive an update on the activities and projects of the rangatahi rōpū.

Attachments: Attachment unavailable at time of publishing agenda

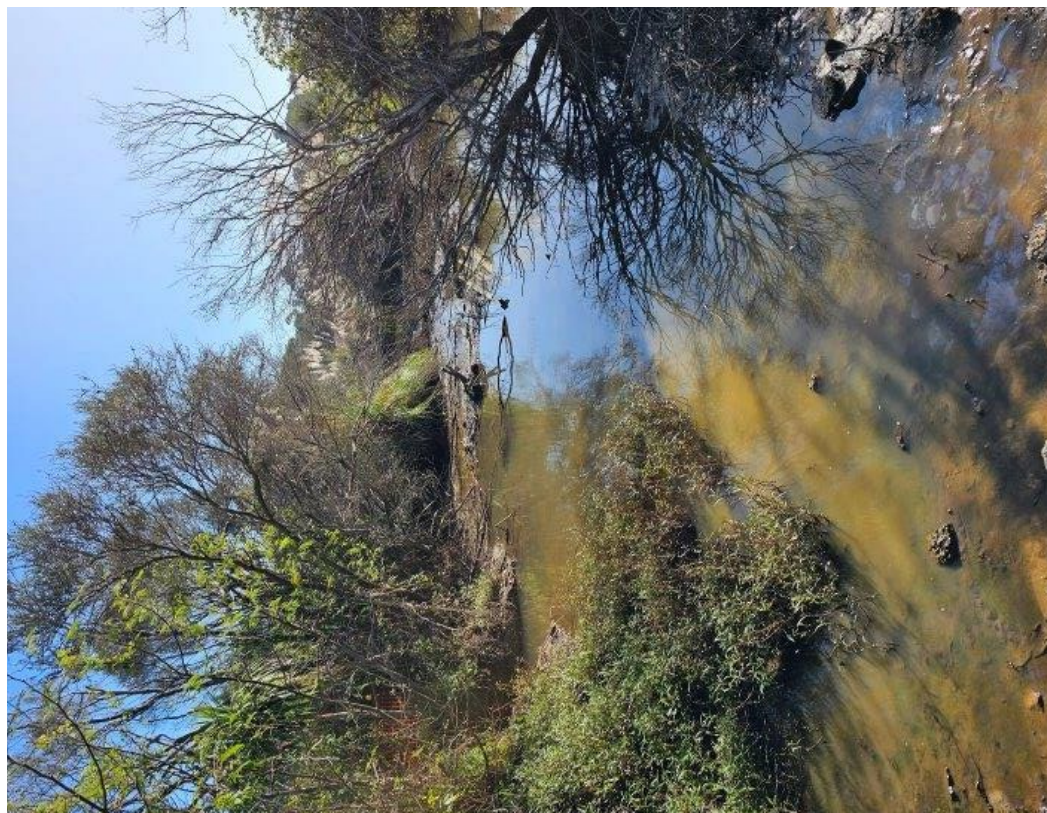


Attachment A
Item 3



Problem and drivers for the project

- Silt has accumulated over time in the channel and it no longer efficiently conveys stormwater runoff to the outlet and estuary.
- There is a perception from the adjacent landowner that this is causing flooding of their property.
- Council has a resource consent condition to maintain the channel as part of the consent granted in 1989.
- Failure to maintain the channel will result in continued non-compliance with the consent conditions.

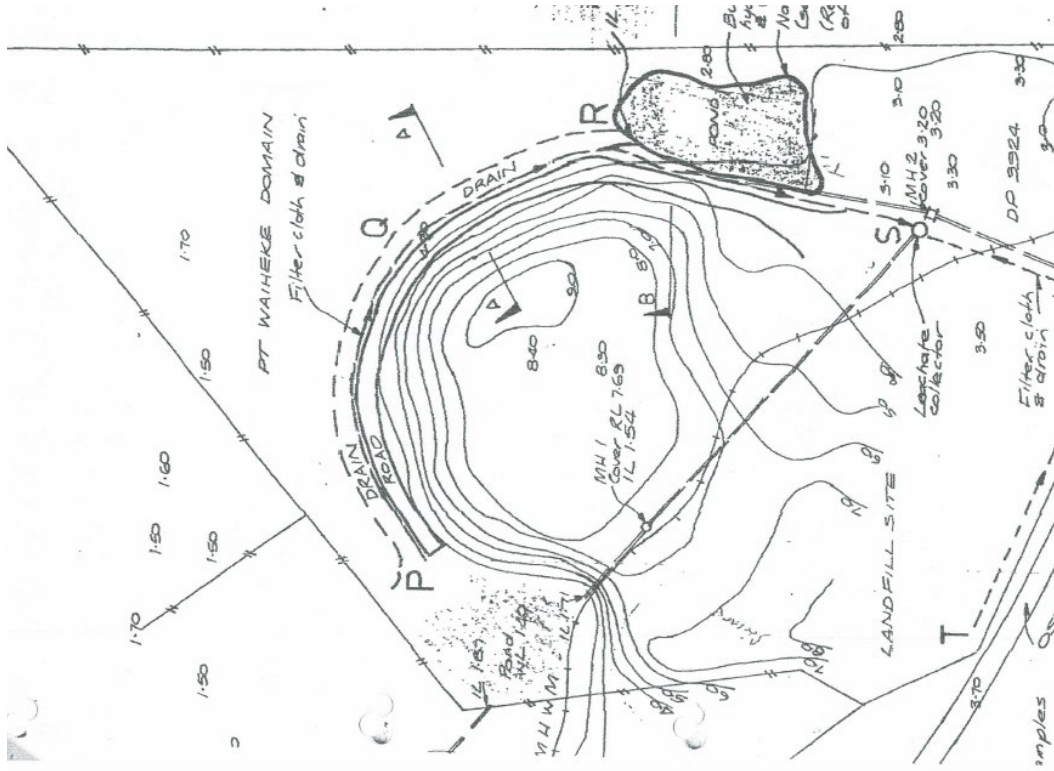
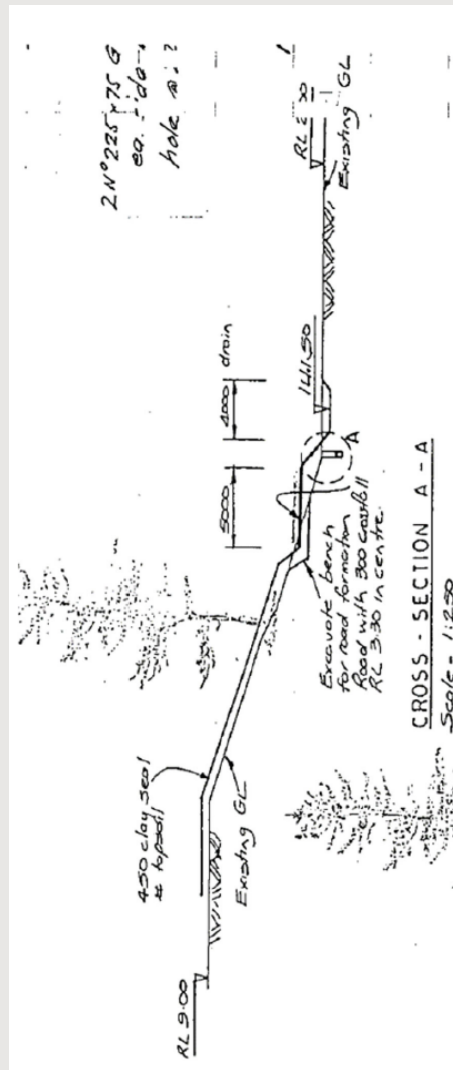


Regulatory Requirements

IN TERMS OF THE PROVISIONS OF THE HARBOURS ACT 1950.

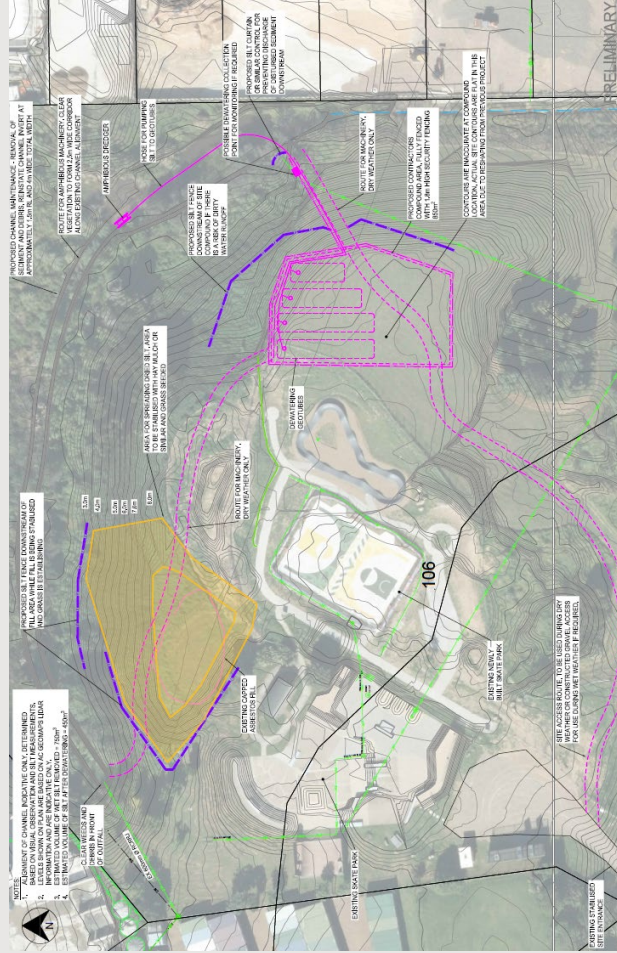
(1) The applicant or his successors or assignee shall be responsible for the continued maintenance of the work in accordance with plan DOC (CM) AK 00178.

(j) The applicant shall, upon completion of the work, comply with the following conditions:

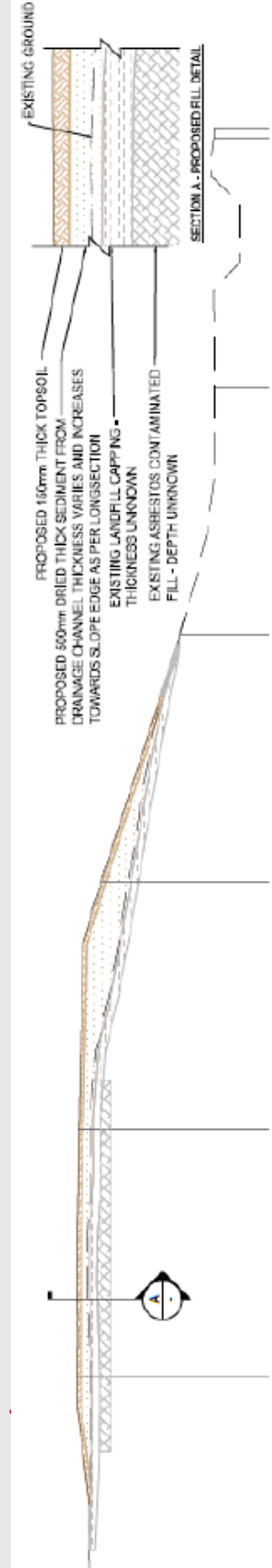


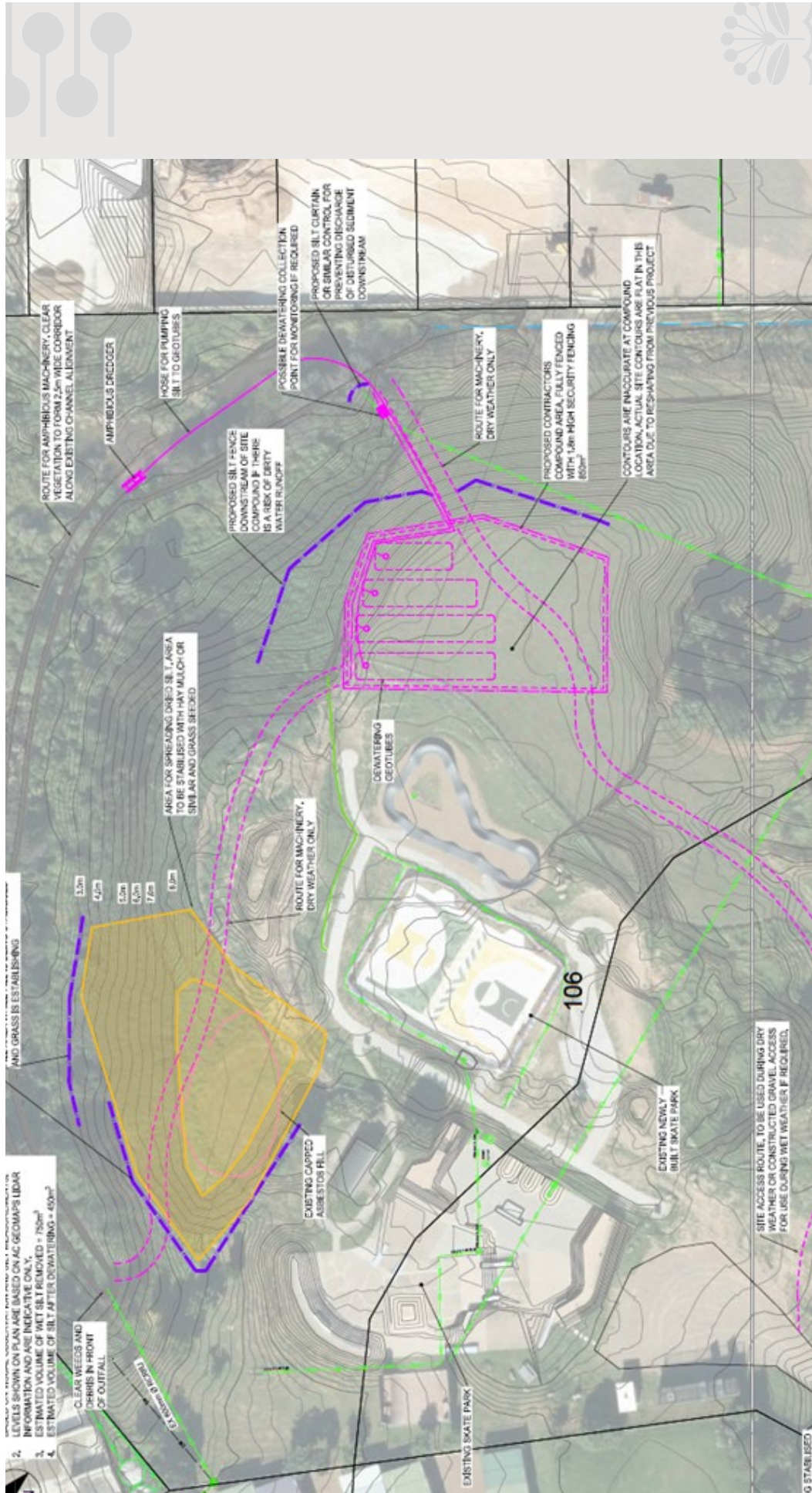
Proposal

- Healthy Waters proposes to remove silt from the drainage channel using an amphibious excavator / pump.
- Excavated material to be dried in geotubes and spread over the closed landfill at an approved location.
- This activity may need to happen on a regular basis as sediment and silt continues to accumulate in the wetland.



Reuse of material on site





Progress



Ecological assessment completed



Geotech investigation completed | confirmed consistency of sediment and thickness of landfill capping



Contaminated land assessment complete: confirmed that silt is suitable for reuse as landscaping fill (not highly contaminated)



Resource Consent lodged



Lizard Management Plan being prepared.



DOC approval may be needed if large numbers of lizards are encountered which could delay works





Conclusion

- Healthy waters has a consent condition to maintain the channel at Tawaipareira Reserve.
- Silt will be removed using an amphibious excavator / pump and dried in geotubes.
- Dried sediment will be spread over the closed landfill at an approved location and grassed.

Attachment A
Item 3





Waiheke Community Broker Update

Waiheke Local Board – 30 April 2025

Fiona Gregory – Community Broker Waiheke, Community Wellbeing Community Delivery

Purpose

To provide an update of the 2024/2025 Work Programme

- Seek local board feedback on allocation of non-contestable grants from the Leadership and Collaboration Waiheke work programme (previously Community Social and Economic Development).



Community Leadership and Collaboration Waiheke

- Community Leadership and Collaboration has \$10,000 remaining to be allocated.
- Staff have worked with local community organisations to identify options for investment:
 - **Waiheke Health Trust WAIhub** – virtual hub to increase accessibility and resources for whānau hauā/disabled people on Waiheke. Budget \$3,000.
 - **Reach Out Waiheke Drop In Centre** – drop-in times 3x weekly at the Waiheke Sustainability Centre to support mental wellbeing and reduce social isolation. Budget \$7,000.



WAIhub Background

- Waiheke Health Trust has been working with Taikura Trust and the Waiheke community since 2020 to try to improve all forms of community access for disabled people and their whānau.
- In 2022, a community disability hui identified two key actions to fill gaps in access – a disability leadership group and a Waiheke Accessibility Information Hub (WAIhub), a combination website/virtual hub and community space.
- Due to central government changes to disability funding and priorities, two full programme proposals have not progressed.
- Waiheke Health Trust has remained in contact with whānau hāua about opportunities for accessible spaces and leadership/advocacy on the island.
- Waiheke Health Trust has proposed to support ongoing engagement and awareness through hosting and maintaining an online virtual hub.



What is WALhub?

- WALhub will be hosted on the new Waiheke Health Trust/Ostend Medical Centre website to be completed mid 2025.
- WALhub will function as a resource for whānau hauā, a space to promote accessibility, to improve understanding about disability on Waiheke, and a forum to educate the community on disability justice.
- It will also be used to profile disability leadership, and to promote disability tourism on the island.
- The site is also intended to engage disabled people and whānau hauā through the concept of the WALhub tick, where residents and visitors can rate the accessibility of businesses, organisations and public spaces on the island.
- Content will be created and maintained by the Occupational Therapist at Waiheke Health Trust.
- Budget is \$3000 including web design and content creation. Ongoing costs of updating the website will be covered by Waiheke Health Trust.



Drop-in Centre Background and Need

- Reach Out Waiheke has identified individuals and groups facing social isolation or lack of access to support services.
- Members of the Waiheke community are experiencing difficulties in response to recent suicides.
- Existing community services often have barriers such as eligibility requirements, limited social incentives, or lack of personal support.
- A drop-in centre provides a flexible, low-barrier space for individuals to seek assistance and connect with their community.
- The target group is people who feel isolated or lonely for any reason, including those supported by a volunteer or carer.



Drop-in Centre Service and Outcomes

- Reach Out Waiheke and the Waiheke Resources Trust have agreed to collaborate to pilot community drop-in times at the Waiheke Sustainability Centre, initially three afternoons a week.
- Reach Out Waiheke has the network and systems to plan, develop, implement and run the drop-in. The Sustainability Centre is already a hub for a variety of people and activities.
- Services will include: community engagement, peer support, information about services and activities, healthy snacks, organised activities when appropriate (eg games, crafts).
- Objectives:
 - Provide a safe and accessible space for individuals to connect and socialise.
 - Facilitate connection and community building.
 - Encourage social interaction and reduce isolation.
 - Promote community engagement and volunteer participation.

Budget \$7000 to pilot the programme until the end of 2025, including staffing.



Waiheke Local Board Alignment

Community Leadership and Collaboration work programme

Activity Outcomes:

- Local networks are empowered to increase participation and collaboration, make positive change in their communities, increase wellbeing and resilience, and develop community capacity.

Waiheke Local Board Plan

A resilient and connected community	Support local initiatives including volunteer groups, that enhance connection and diversity, reduce isolation, and promote community development via the community grants programme, endorsements and other activities
A healthy and supportive society, where people feel there is care, respect and all people are valued	Support Waiheke health and social service providers to advocate for Waiheke based services
	Support community access to a broad range of health services and advocate for collaboration of health resources

