

**Date:** Wednesday 30 April 2025  
**Time:** 11.30 am  
**Meeting Room:** Waiheke Local Board Office  
**Venue:** 10 Belgium  
Ostend  
Waiheke Island

---

## **Waiheke Local Board Workshop**

### **OPEN NOTES ITEM ATTACHMENTS**

---

<b>ITEM</b>	<b>TABLE OF CONTENTS</b>	<b>PAGE</b>
<b>3</b>	<b>Local Board Workshop</b>	
A.	Tawaipareira stormwater channel presentation	3
B.	Onetangi Sports Park wastewater presentation	13
C.	Waiheke Community Wellbeing update presentation	23
D.	Waiheke rangatahi rōpū update presentation	31











## Problem and drivers for the project

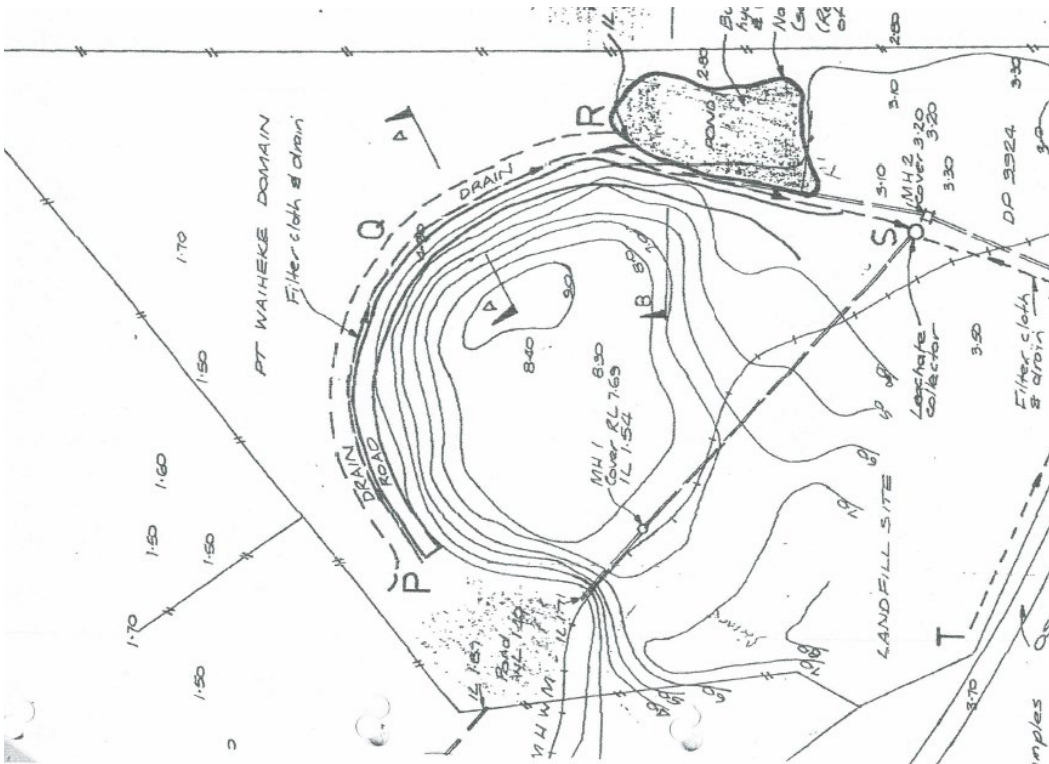
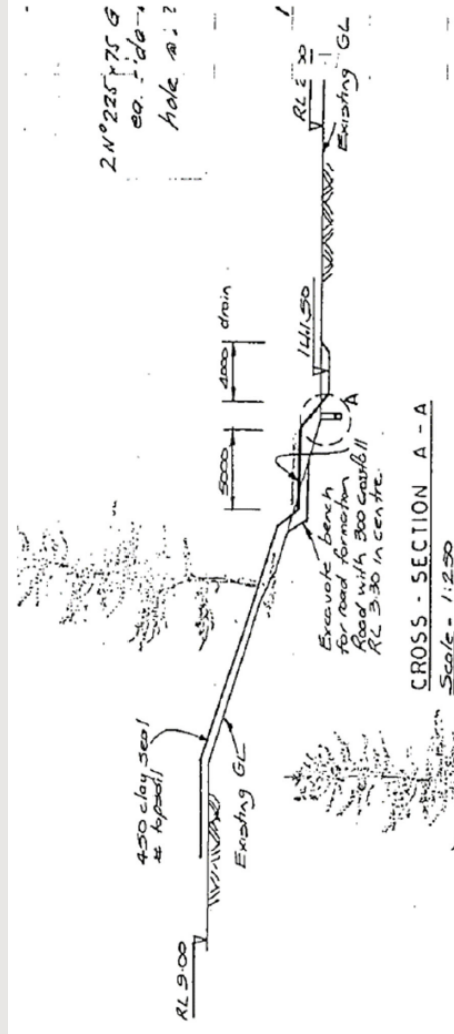
- Silt has accumulated over time in the channel and it no longer efficiently conveys stormwater runoff to the outlet and estuary.
- There is a perception from the adjacent landowner that this is causing flooding of their property.
- Council has a resource consent condition to maintain the channel as part of the consent granted in 1989.
- Failure to maintain the channel will result in continued non-compliance with the consent conditions.



# Regulatory Requirements

(1) The applicant or his successors or assignee shall be responsible for the continued maintenance of the work in accordance with plan DOC (CH) AK 00178.

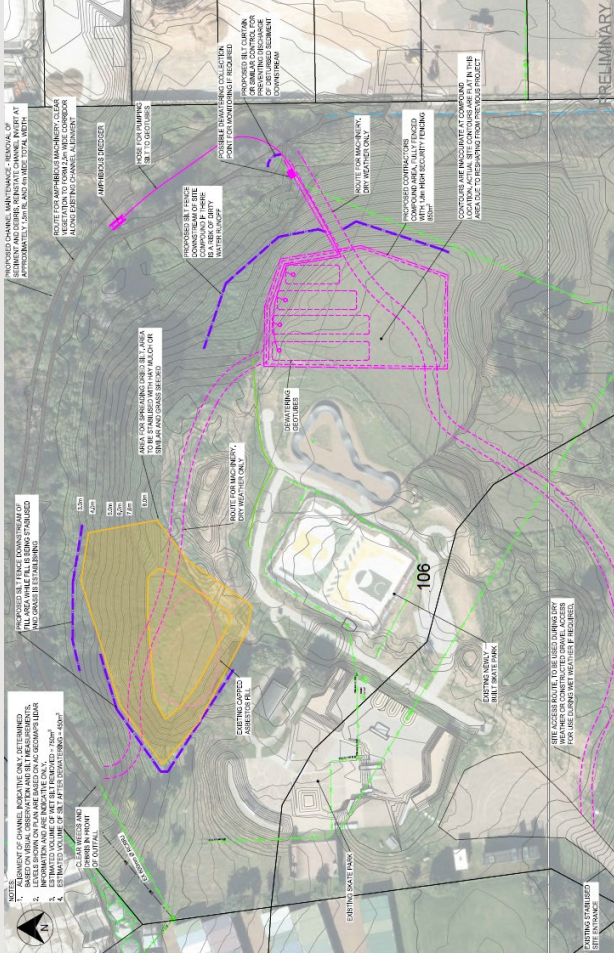
(j) The applicant shall, upon completion of the works...



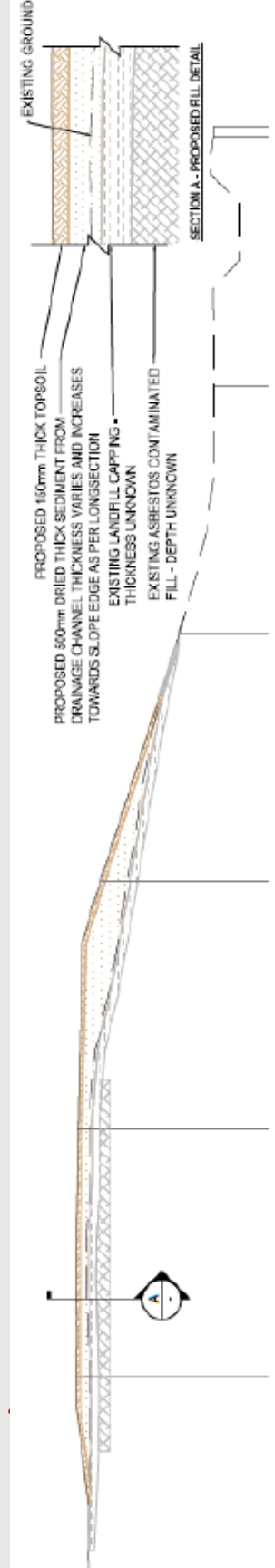


## Proposal

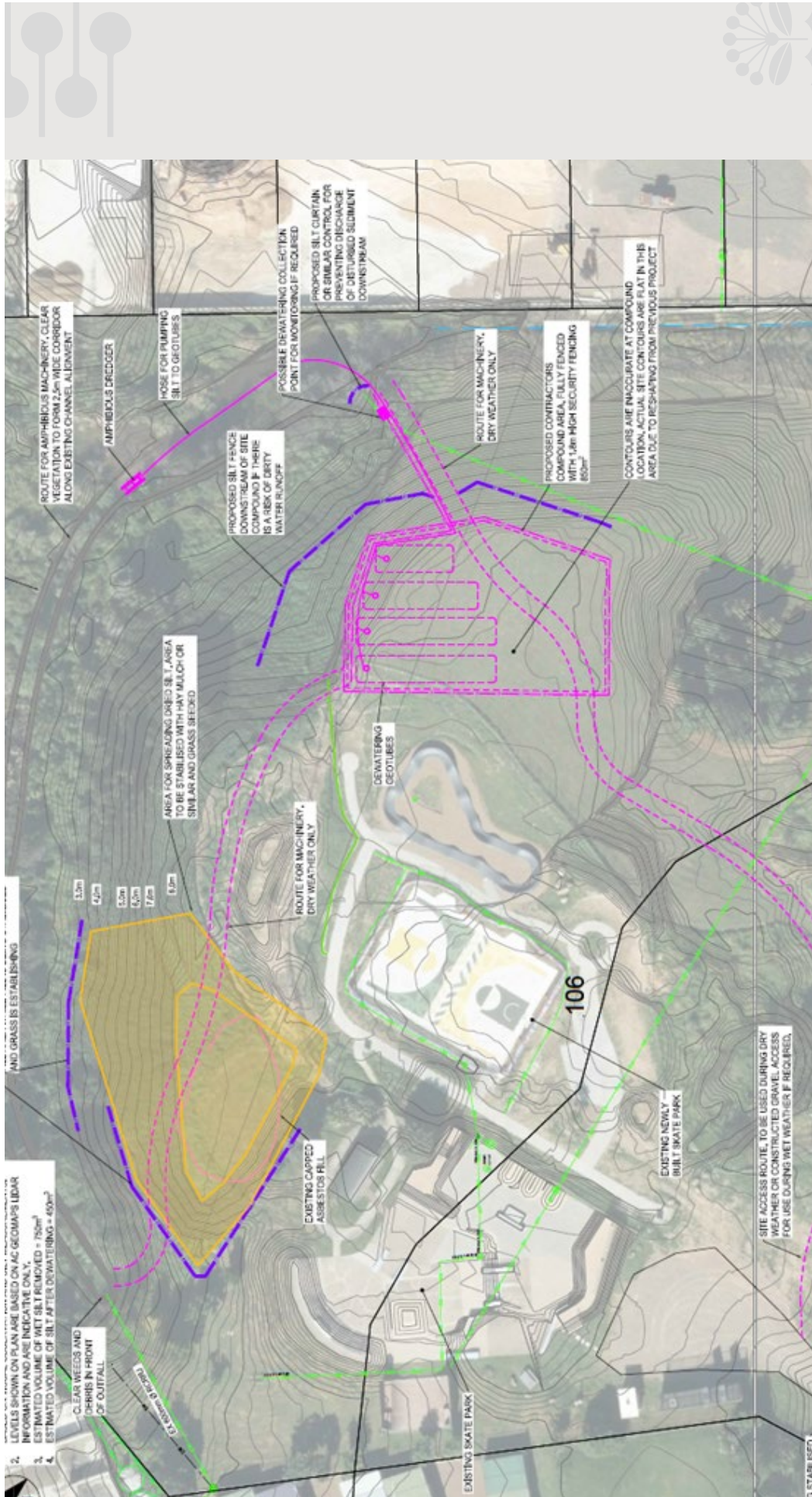
- Healthy Waters proposes to remove silt from the drainage channel using an amphibious excavator / pump.
- Excavated material to be dried in geotubes and spread over the closed landfill at an approved location.
- This activity may need to happen on a regular basis as sediment and silt continues to accumulate in the wetland.



# Reuse of material on site







Item 3

Attachment A



## Progress



Ecological assessment completed



Geotech investigation completed | confirmed consistency of sediment and thickness of landfill capping



Contaminated land assessment complete: confirmed that silt is suitable for reuse as landscaping fill (not highly contaminated)



Resource Consent lodged



Lizard Management Plan being prepared.



DOC approval may be needed if large numbers of lizards are encountered which could delay works





## Conclusion

- Healthy waters has a consent condition to maintain the channel at Tawaipareira Reserve.
- Silt will be removed using an amphibious excavator / pump and dried in geotubes.
- Dried sediment will be spread over the closed landfill at an approved location and grassed.









A large dark blue rectangular area containing the text 'Onetangi Sports Park' in large white font and 'Wastewater upgradation' in smaller white font below it. The background is decorated with a pattern of white circles and lines, resembling a stylized circuit or network diagram.

## Background

- The current treatment facility exceeds the monthly average discharge limits consistently (4 exceedances of daily limits in 2023).
- Known operational issues including failing disposal field.
- The treatment facility has been non-compliant for a very long time.



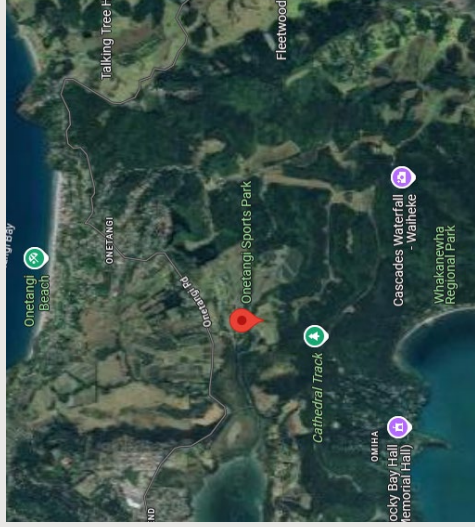
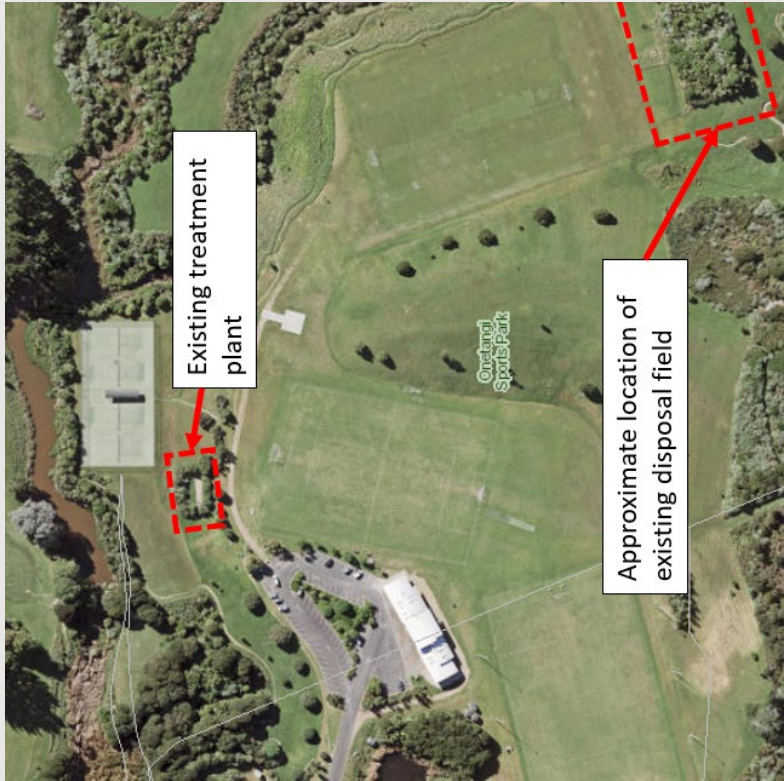


## **Proposed works**

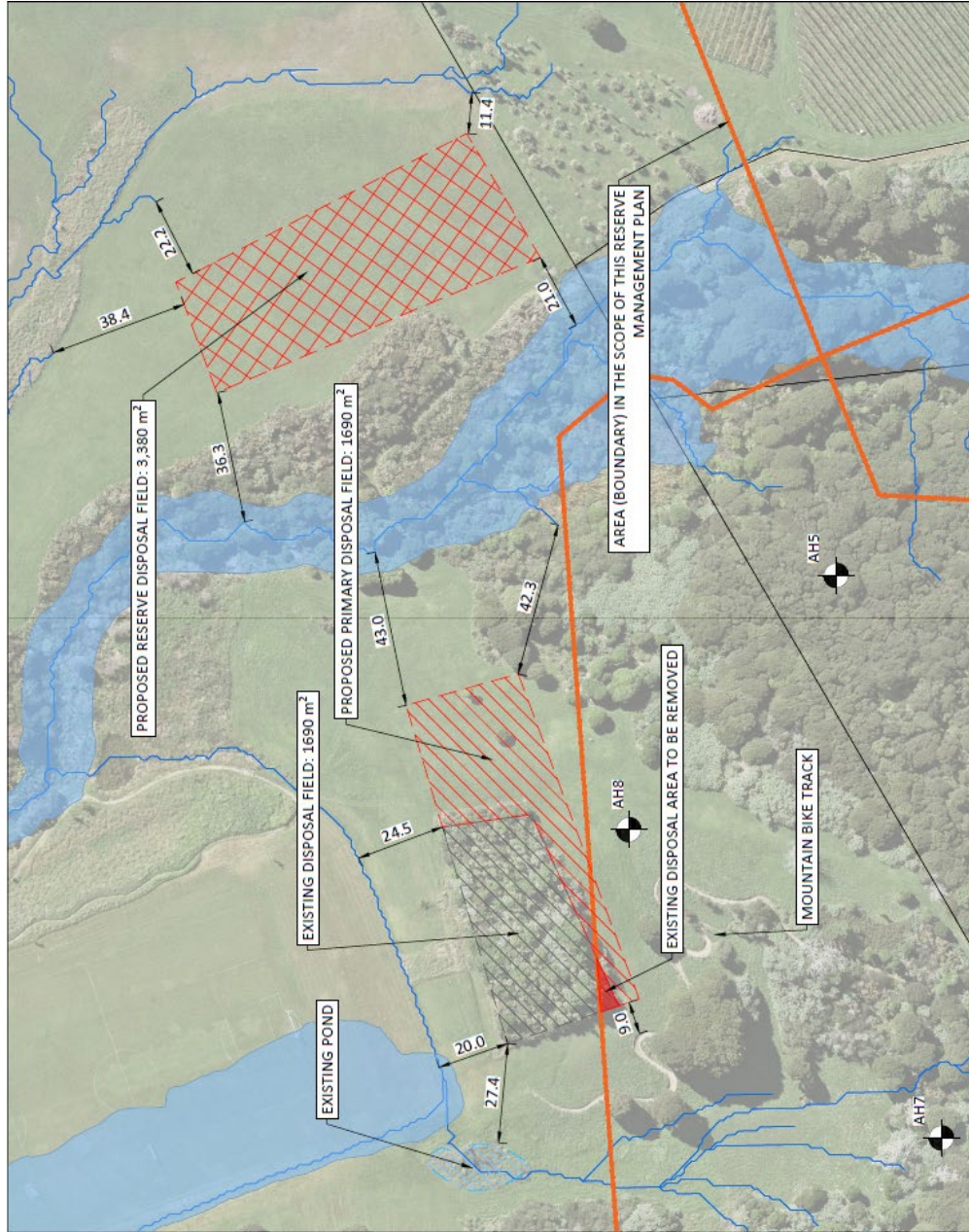
- Install a buffer tank
- Construct new retaining wall
- New wastewater disposal field.



### Location of Proposed works







See layout menu for other options

## Installation of new buffer tank

- Current wastewater treatment and disposal system is designed to accommodate the consented wastewater volume of 8.45m<sup>3</sup>/day
- There were instances where the consented limit was exceeded.
- Install new buffer tank upstream of the existing wastewater treatment plant will assist in managing the flow rate
- Resource Consent - propose to amend the discharge consent to address the peak flows that exceed the current consent limit



## Retaining wall

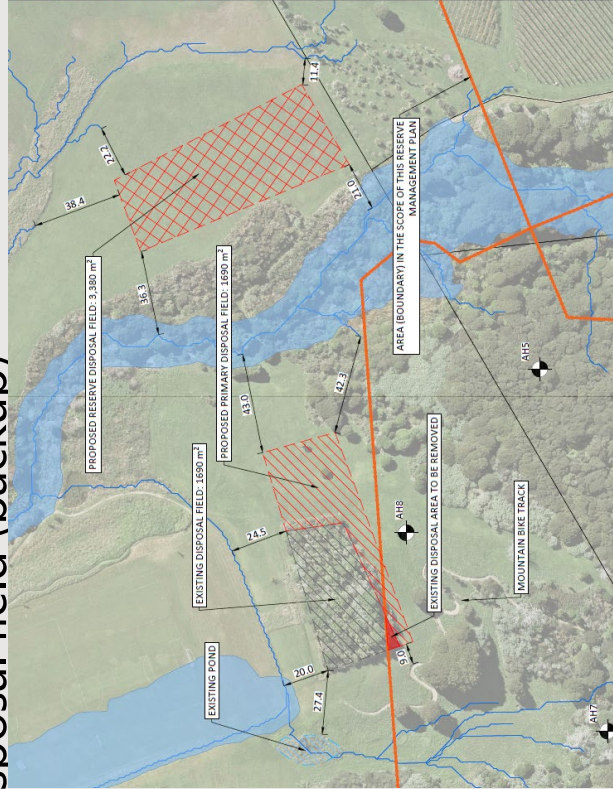
- Retaining wall is failing
- It is retaining contaminated soil
- Proposed retaining wall will retain the contaminated soil and existing treatment system
- Install additional Innoflow Advan Tex Ax-100 to be installed adjacent to existing innoflow.





## Disposal field

- The existing land disposal area (1,690 m<sup>2</sup>)
- Proposed additional primary disposal field
- Proposed reserve disposal field (backup)



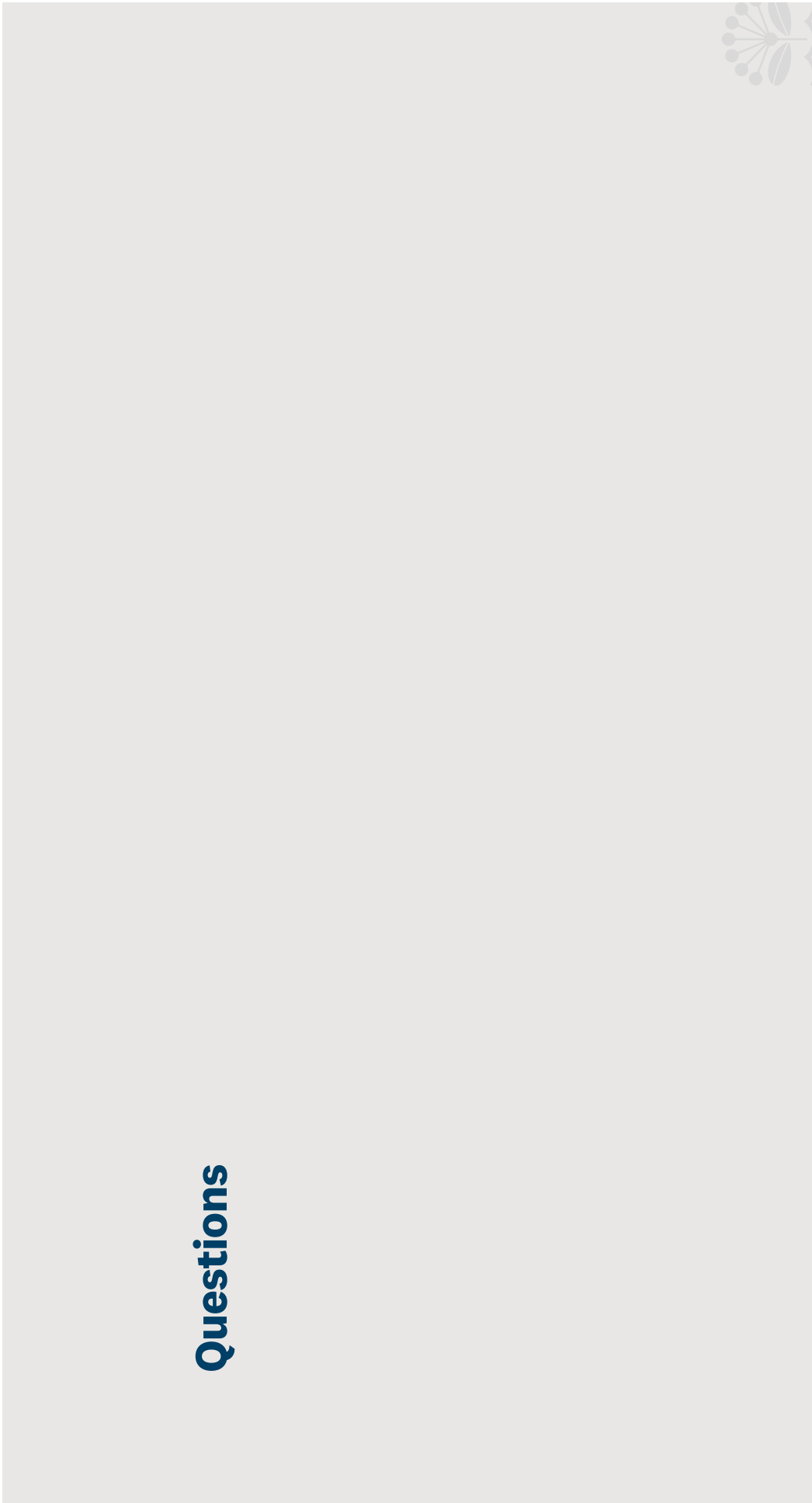
## High Level Programme

- Resource Consent lodged – May / June 2025
- Design Complete – December 2025
- Construction – Proposed February 2026 to June 2026



Item 3

Attachment B







# Waiheke Community Broker Update

Waiheke Local Board – 30 April 2025

Fiona Gregory – Community Broker Waiheke, Community Wellbeing Community Delivery



## **Purpose**

To provide an update of the 2024/2025 Work Programme

- Seek local board feedback on allocation of non-contestable grants from the Leadership and Collaboration Waiheke work programme (previously Community Social and Economic Development).

## Community Leadership and Collaboration Waiheke

- Community Leadership and Collaboration has \$10,000 remaining to be allocated.
- Staff have worked with local community organisations to identify options for investment:
  - **Waiheke Health Trust WAIhub** – virtual hub to increase accessibility and resources for whānau hauā/disabled people on Waiheke. Budget \$3,000.
  - **Reach Out Waiheke Drop In Centre** –drop-in times 3x weekly at the Waiheke Sustainability Centre to support mental wellbeing and reduce social isolation. Budget \$7,000.





## WAIhub Background

- Waiheke Health Trust has been working with Taikura Trust and the Waiheke community since 2020 to try to improve all forms of community access for disabled people and their whānau.
- In 2022, a community disability hui identified two key actions to fill gaps in access – a disability leadership group and a Waiheke Accessibility Information Hub (WAIhub), a combination website/virtual hub and community space.
- Due to central government changes to disability funding and priorities, two full programme proposals have not progressed.
- Waiheke Health Trust has remained in contact with whānau hāua about opportunities for accessible spaces and leadership/advocacy on the island.
- Waiheke Health Trust has proposed to support ongoing engagement and awareness through hosting and maintaining an online virtual hub.



## What is WALhub?

- WALhub will be hosted on the new Waiheke Health Trust/Ostend Medical Centre website to be completed mid 2025.
- WALhub will function as a resource for whānau hauā, a space to promote accessibility, to improve understanding about disability on Waiheke, and a forum to educate the community on disability justice.
- It will also be used to profile disability leadership, and to promote disability tourism on the island.
- The site is also intended to engage disabled people and whānau hauā through the concept of the WALhub tick, where residents and visitors can rate the accessibility of businesses, organisations and public spaces on the island.
- Content will be created and maintained by the Occupational Therapist at Waiheke Health Trust.
- Budget is \$3000 including web design and content creation. Ongoing costs of updating the website will be covered by Waiheke Health Trust.





## Drop-in Centre Background and Need

- Reach Out Waiheke has identified individuals and groups facing social isolation or lack of access to support services.
- Members of the Waiheke community are experiencing difficulties in response to recent suicides.
- Existing community services often have barriers such as eligibility requirements, limited social incentives, or lack of personal support.
- A drop-in centre provides a flexible, low-barrier space for individuals to seek assistance and connect with their community.
- The target group is people who people who feel isolated or lonely for any reason, including those supported by a volunteer or carer.



## Drop-in Centre Service and Outcomes

- Reach Out Waiheke and the Waiheke Resources Trust have agreed to collaborate to pilot community drop-in times at the Waiheke Sustainability Centre, initially three afternoons a week.
- Reach Out Waiheke has the network and systems to plan, develop, implement and run the drop-in. The Sustainability Centre is already a hub for a variety of people and activities.
- Services will include: community engagement, peer support, information about services and activities, healthy snacks, organised activities when appropriate (eg games, crafts).
- Objectives:
  - Provide a safe and accessible space for individuals to connect and socialise.
  - Facilitate connection and community building.
  - Encourage social interaction and reduce isolation.
  - Promote community engagement and volunteer participation.

Budget \$7000 to pilot the programme until the end of 2025, including staffing.



# Waiheke Local Board Alignment

## Community Leadership and Collaboration work programme

### Activity Outcomes:

- Local networks are empowered to increase participation and collaboration, make positive change in their communities, increase wellbeing and resilience, and develop community capacity.

## Waiheke Local Board Plan

A resilient and connected community	Support local initiatives including volunteer groups, that enhance connection and diversity, reduce isolation, and promote community development via the community grants programme, endorsements and other activities
A healthy and supportive society, where people feel there is care, respect and all people are valued	Support Waiheke health and social service providers to advocate for Waiheke based services Support community access to a broad range of health services and advocate for collaboration of health resources







**WAIHEKE  
RANGATAHI  
RŌPŪ**

# KO WAI MĀTOU? (WHO ARE WE?)

We're a rangatahi co-design rōpū working with Waiheke Local Board and Waiheke Adult Learning to find ways to improve rangatahi lives on the motu.



# OUR OBJECTIVE

We will share what we've been up to over the past few months, what we have planned and what we hope to achieve if the funding continues.





# Improving Quality of Life for Rangatahi on the Island

Item 3

Attachment D

## Survey & Focus Groups Insights:

- Needs and opportunities for rangatahi
- Continued sentiment: "Nothing to do"

## Key Findings:

- Need for cultural activities for rangatahi Māori
- Lack of affordable activities, high cost of living, and nightlife options
- Emphasis on accessible mental health support

## Additional Support:

- Increased visibility and accessibility of existing services
- Immediate and accessible mental health support
  - Building community connections, especially with Waiheke High School
  - Small paid roles for coordination of activities

## Barriers:

- High transportation costs limiting access to activities and services
- Lack of affordable, engaging activities for rangatahi

## Critical Needs:

- Hang-out and recreational spaces, especially in winter and at night
- Social spaces beyond current facilities like the skatepark
- Job opportunities and career pathways
- Skill-building programs e.g driver's license support

## Goal:

Foster a more inclusive, supportive environment for rangatahi through community efforts

# DECEMBER HIGHLIGHTS 2024

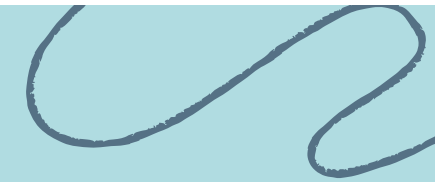
## Ropū transitioned

Our journey took an exciting turn in December as we formally shifted from the original co-design rōpū into the newly named Waiheke Rangatahi Rōpū.

This transition wasn't just a change of title. It marked the moment we moved from the design phase into active delivery, ready to put our ideas into practice.

- Welcoming fresh energy: Several new rangatahi were brought on board, adding diverse voices and skills to the kaupapa.
- Solidifying our purpose: Together, both founding and new members co-created a living plan that sets out our vision, roles, and tikanga for the year ahead.
- Building sustainability: We mapped out governance processes, meeting rhythms, and funding requirements to ensure the rōpū can thrive long-term.

By the end of the month, we had a stronger, larger, and more future-focused Waiheke Rangatahi Rōpū ready to serve our island's young people.



# Our new members



Kia ora I'm Lola! I joined the Rangatahi Rōpū to help create some fun events for the youth on Waiheke! I'm a creative in many realms and love to put effort towards sustainability and activism for a brighter future.



Kia ora! I'm Ria and I joined the Rangatahi Rōpū this year. I joined in hopes of creating fun, interactive and community building events for Waiheke Island's youth. I love all things music and film and plan on bringing my love for them into my event planning!



Kia ora, I'm Felix Ika Blaha Brethouwer.  
Returning from study in Wellington, I'm happy to be getting involved here and there in my home community. Largely keen on Bicycles and Boardgames!



Kia ora, ko Pounamu tēnei! I've joined the Rangatahi Rōpū to give back to our community on Waiheke. I grew up here but only recently moved back so I'm looking forward to connecting with our community. I'm into music and all things Te Ao Māori so I will bring these passions of mine into this rōpū.



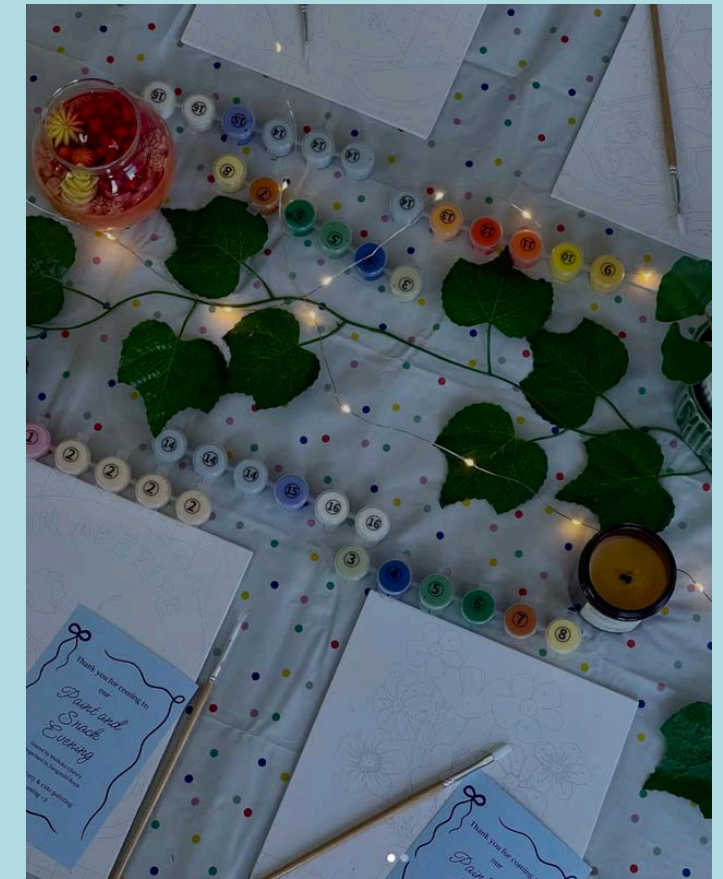
# PAINT AND SNACK

To kick off our mahi, we hosted our very first event:  
Paint & Snack

A relaxed and creative space designed by and for rangatahi.

- 20 rangatahi attended and took part in a chill evening of paint-by-numbers, shared kai, good music, and whakawhanaungatanga.
- We also played lalaga (weaving games) which brought out lots of laughs and sparked kōrero among participants.
- The vibe was low-pressure, welcoming, and fun. Exactly what we hoped for in creating a space where rangatahi could feel comfortable being themselves.

This event was a huge success and laid a strong foundation for future kaupapa-driven gatherings.



# 2025

We created a strategic plan to guide the Rangatahi Co-Design Rōpū from February to July 2025.

The plan includes:

A vision to empower Waiheke rangatahi through wellbeing, cultural connection, and community participation.

Key goals:

- Safe, inclusive spaces
- Expanded access to activities
- Support for rangatahi-led initiatives
- Improved transport, kai, and wellbeing services
- Stronger partnerships and funding

Priority initiatives around creating youth-friendly spaces, leadership training, and enhancing wellbeing support.

Success indicators including rangatahi engagement, leadership growth, infrastructure improvements, and sustainability planning.

This plan now provides a clear roadmap for growing rangatahi-led initiatives on Waiheke.



















