



Date: Tuesday, 1 July 2025
Time: 9:00 am
Meeting Room: Manukau Chambers
Venue: West Annex
Manukau Service Center
Manukau

Ōtara-Papatoetoe Local Board Workshop

OPEN AGENDA

MEMBERSHIP

Chairperson	Apulu Reece Autagavaia
Deputy Chairperson	Vi Hausia
Members	Dr Ashraf Choudhary, QSO, JP
	Dr Ofa Dewes, MNZM
	Topou Folau
	Li'amanaia Lorenzo Kaisara
	Albert Lim

Claire Bews
Democracy Advisor

26 June 2025

Contact Telephone: +6421 540 216
Email: claire.bews@aucklandcouncil.govt.nz
Website: www.aucklandcouncil.govt.nz

ITEM	TABLE OF CONTENTS	PAGE
1	Ngā Tamōtanga Apologies	2
2	Te Whakapuaki i te Whai Pānga Declaration of Interest	2
3	Local Board Workshop	3

Agenda Items

1 Ngā Tamōtanga | Apologies

At the close of the agenda no apologies had been received.

2 Te Whakapuaki i te Whai Pānga | Declaration of Interest

Members are reminded of the need to be vigilant to stand aside from decision making when a conflict arises between their role as a member and any private or other external interest they might have.

Local Board Workshop

File No.: CP2025/13791

Note 1: This workshop has been called by the chairperson in consultation with the staff.

Note 2: No working party/workshop may reach any decision or adopt any resolution unless specifically delegated to do so.

Te take mō te pūrongo Purpose of the report

1. To present the Ōtara-Papatoetoe Local Board workshop agenda for 1 July 2025.

Whakarāpopototanga matua Executive summary

2. Workshops are open by way of recording the session and making the recording available after the workshop.
3. Some sessions may not be open to the public. The staff / chairperson and deputy chairperson decide which sessions are open to the public, depending on the sensitivity of the information being discussed. If a session is not open, a reason will be provided below.
4. Workshops will be recorded and a link to the recording will be included in the published documents.
5. Local Board workshops provide an opportunity for local boards to carry out their governance role in the following areas:
 - a) Accountability to the public
 - b) Engagement
 - c) Input to regional decision-making
 - d) Keeping informed
 - e) Local initiative / preparing for specific decisions
 - f) Oversight and monitoring
 - g) Setting direction / priorities / budget.
6. Workshops do not have decision-making authority.
7. Workshops are used to canvas issues, prepare local board members for upcoming decisions and to enable discussion between elected members and staff.
8. Members are respectfully reminded of their Code of Conduct obligations with respect to conflicts of interest and confidentiality.
9. The following will be covered in the workshop:-

Session 1 – 9.00am – 9.45am

Watercare's Metropolitan Water Strategy

Presenter/s:	Ben Halliwell (Elected Member Relationship Advisor), Chris Allen, (Manager Strategic Planning), Moana Williams (Manager Strategic Relations and Communities), Elizabeth Stewart (Elected Member Relationship Advisor)
Purpose:	Receive update on progress
Governance role:	Keeping informed
Proposed Outcome/s:	To update the Board on the public engagement undertaken from March-May 2025 on water priorities that will inform drafting a Metropolitan Water Strategy. Watercare will complete a draft strategy December-Jan 2026 and offer another round of workshops for local boards in March/April 2026
Attachment/s:	A - Watercare Metropolitan Water Strategy - Presentation B - Watercare Metropolitan Water Strategy - Memo

Session 2 – 9.45am – 10.15am

AT - Buckland Road Pedestrian Crossing Upgrade (LBTCF)

Presenter/s:	Jennifer Fraser (Elected Member Relationship), David Liang (AT Project Manager), Minnie Liang (AT Senior Transportation)
Purpose:	Define board position and feedback
Governance role:	Local initiative / preparing for specific decisions
Proposed Outcome/s:	To discuss the options for Buckland Road pedestrian crossing upgrade (LBTCF).
Attachment/s:	C - Buckland Road Local Board - Presentation

Session 3 – 10.15am – 10.45am

AT - Gray Ave Safety Improvements and Bus Stops

Presenter/s:	Patrick Chan (Principal Transportation), Claire Dixon (CD – Consulting), Christy Borman (Auckland Transport), Jennifer Fraser (Elected Member Relationship)
Purpose:	Define board position and feedback
Governance role:	Setting direction / priorities / budget
Proposed Outcome/s:	Discuss planned changes to Gray Ave to make it safer and to insert bus stops to serve new bus service.
Attachment/s:	D - Gray Ave safety improvements and bus stops - Presentation

Session 4 – 10.45am – 11.00am

AT - License Plate Recognition Community Education

Presenter/s:	Jennifer Fraser (Elected Members Relationship Partner), Hannah Ross (Principal communications and engagement)
Purpose:	Provide Feedback
Governance role:	Keeping informed
Proposed Outcome/s:	Share with the Ōtara-Papatoetoe Local board for discussion and feedback the communications planned to educate Aucklanders on Licence plate recognition, with community education through social media content.

Attachment/s:	E – AT License Plate Recognition Community Education - social media content - Presentation
Break 11.00am – 11.15am	
Session 5 – 11.15am – 12.15pm	
Fix and Finish Fund	
Presenter/s:	Bill Teaukura (Manager Area Operations), Anand Thakkar (Work programme lead), Dani Delamere (Sports Facilities Investment Advisor), Emily Wagon (Parks & Places Specialist), Manoj Rathod (Lead Financial Advisor), Hao Chen (Manager Local Board Financial Advisory), Pippa Sommerville (Head of Play, Sport & Recreation), Rina Tagore (Senior Local Board Advisor), Nicola Mochrie (Local Board Advisor)
Purpose:	Provide direction on preferred approach
Governance role:	Local initiative / preparing for specific decisions
Proposed Outcome/s:	To discuss projects for the board to put forward for fix and finish fund
Attachment/s:	F - Fix and Finish Presentation Ōtara-Papatoetoe Local board
Session 6 – 12.15pm – 12.55pm	
R & I - Making Space for Water - Current and planned area works	
Presenter/s:	Elizabeth Johnson (Principal Healthy Waters), Ignacio Quinteros (Relationship Advisor)
Purpose:	Define board position and feedback
Governance role:	Keeping informed
Proposed Outcome/s:	To provide an update on Making Space for Water works planned or underway in the local board area.
Attachment/s:	G – Resilience & Infrastructure Ōtara-Papatoetoe Making Space for Water - Presentation

Ngā tāpirihanga Attachments

No.	Title	Page
A	Watercare Metropolitan Water Strategy – Presentation	7
B	Watercare Metropolitan Water Strategy – Memo	15
C	Buckland Road Local Board - Presentation	21
D	Gray Ave safety improvements and bus stops - Presentation	33
E	AT License Plate Recognition Community Education - social media content - Presentation	53
F	Fix and Finish Presentation Ōtara-Papatoetoe Local board	63
G	Resilience & Infrastructure Ōtara-Papatoetoe Making Space for Water - Presentation	79

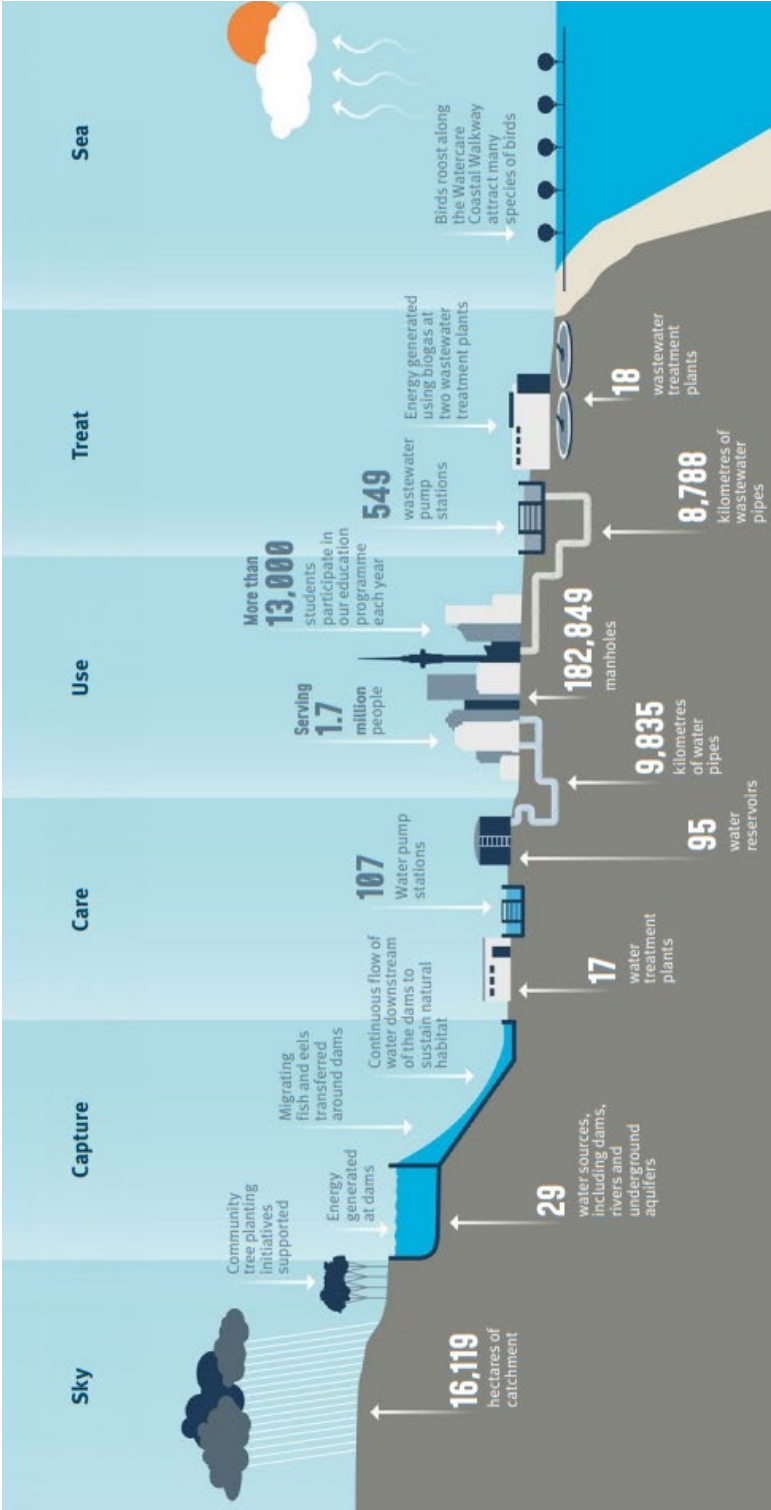


Watercare

Network Capacity Limitations Ōtara-Papatoetoe

Ōtara-Papatoetoe Local Board
24 June 2025

Watercare



Context

Overview of Watercare's role:

Delivering safe drinking water
Managing wastewater services
Ensuring public health and environmental protection

Challenges:

Long timeframes for consenting, designing, and building infrastructure
Changing population forecast
Out of sequence and unanticipated growth from private plan changes
Policy and framework changes
Funding constraints and prioritisation

Network capacity limitations:

Limited capacity for drinking water and wastewater networks
Local vs. Bulk network limitations

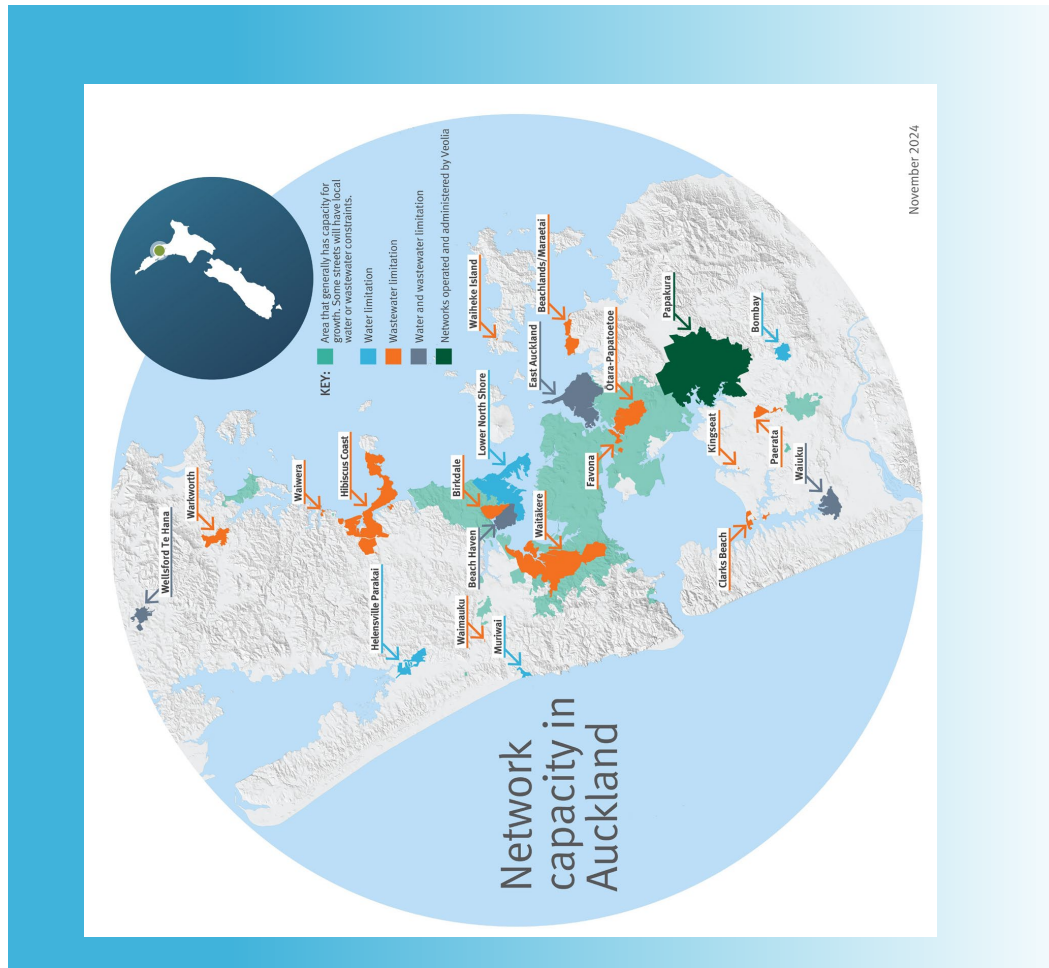


November 2024 Update

Identified Network Limitation

- Wastewater limitation in Ōtara-Papatoetoe

Not a new issue and the update provided through this information released was already generally in effect.



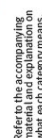
We have sought to provide greater clarity and have now published the subzone in south Ōtara and Clover Park.

Watercare will not be approving any new development in

Watercare will not be approving any new development in this area.

The remainder of Ōtara-Papatoetoe showing on this map (Ōtara north) is limited to developments of less than 5 new homes (Development Unit Equivalents (DUE)) per site.

- Using developer information to understand future network capacity uptake
- Analysing network performance data
- Considering feedback for transparency and certainty for developers



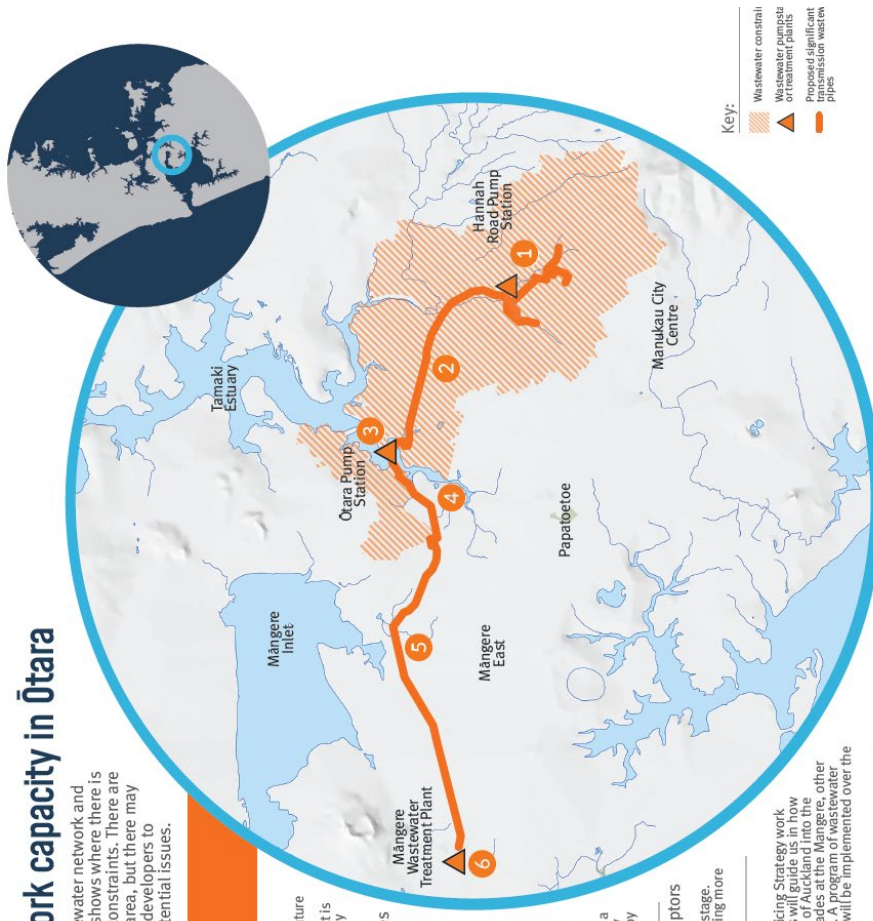


Projects to increase network capacity in Ōtara

In some areas, there is limited capacity in our wastewater network and treatment plants to support new housing. The map shows where there is limited capacity and our projects to address those constraints. There are no overall drinking water supply constraints in this area, but there may be localized capacity constraints. We encourage all developers to collaborate with us early to identify and address potential issues.

2028 - 2040 Wastewater projects

- 1 Ōtara local wastewater network upgrade**
We will upgrade the local network upstream of the future pump station at Hannah Road to address existing performance issues. This project is being investigated. The work should be completed by 2029, costing \$3.6m.
- 2 Ōtara catchment wastewater capacity upgrades**
We will build a pump station at Hannah Road and pipelines to add more capacity. Additional underground storage at Billington Reserve will reduce overflows during heavy rain. This project is being designed. The work should be complete by 2028, costing \$7.0m.
- 3 Ōtara Pump Station upgrades**
We will upgrade the Ōtara Pump Station to increase storage and pumping capacity. The project is in the early investigation stage. The work should be completed by 2036, costing \$2.0m.
- 4 Ōtara Branch Sewer upgrade**
We will replace the existing Ōtara Branch Sewer with a larger pipe to add capacity. The project is in the early investigation stage. The work should be completed by 2036, costing \$4.0m.
- 5 Duplication of the Eastern and Southern Interceptors**
We will add capacity to the Eastern and Southern Interceptors. The project is in the early investigation stage. Work should be completed by 2040, potentially costing more than \$500m.
- 6 Māngere Wastewater Treatment Plant**
We will consider the output of our Metropolitan Servicing Strategy work and the wider wastewater balance for Auckland. This will guide us in how we will deliver wastewater services across the whole of Auckland into the future. It will allow us to complete our plans for upgrades at the Māngere, other wastewater treatment plants and other wastewater infrastructure over the next decade.



February 2025. All timelines and costs represent our best estimates at the time of publication and are subject to change. Consent controls the limits and volume of the wastewater discharge from Māngere.

Next steps

Updates

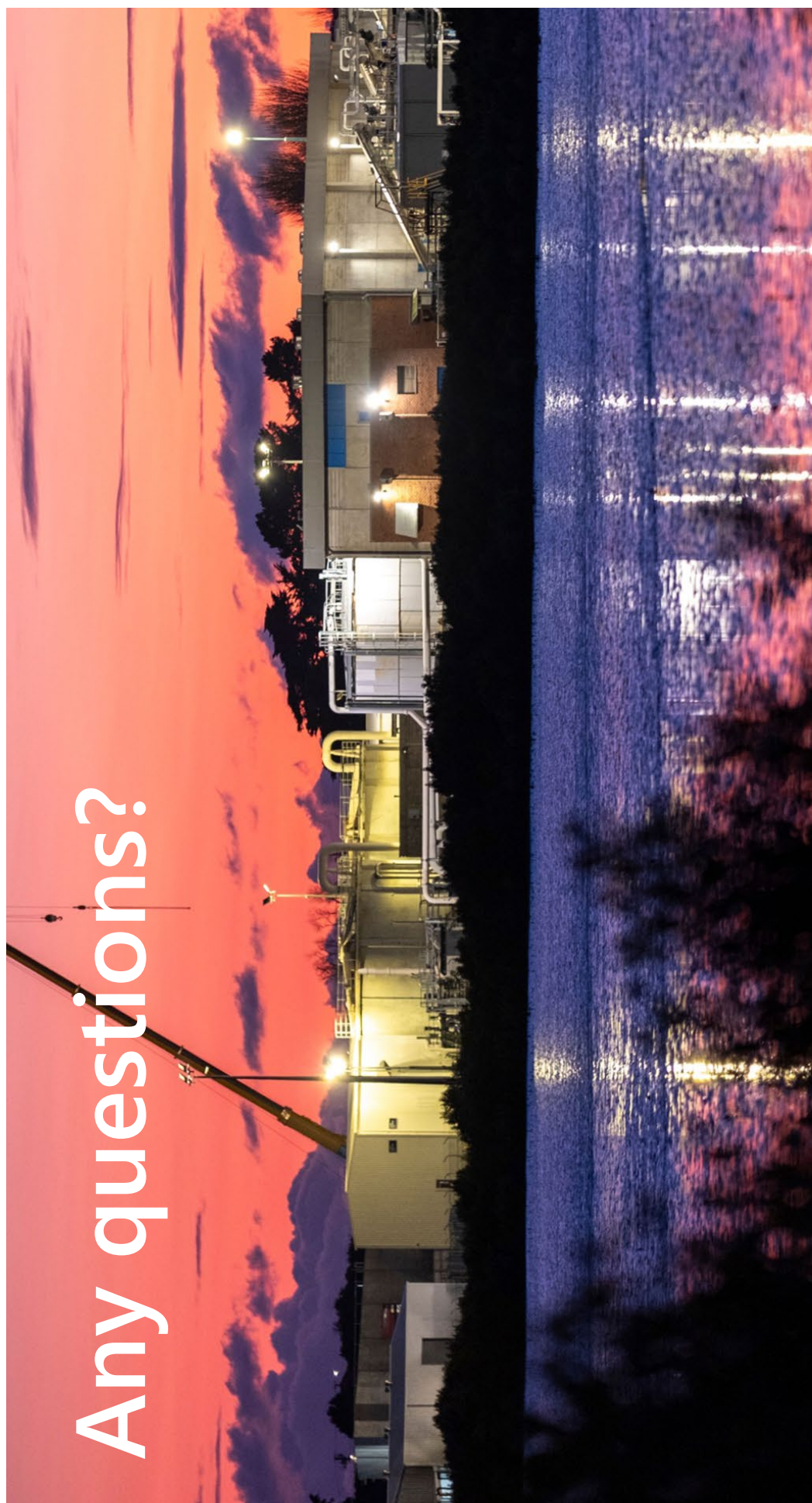
- Incorporating changes into broader updates
- Providing greater detail on capacity limitations

Communications Plan

- New map released last week
- Watercare's website updated
- Developer forums and communication

Continue monitoring situation and providing updates







Memorandum

To: Ōtara-Papatoetoe Local Board

Cc: Councillor Alf Filipaina, Councillor Lotu Fuli

From: Elizabeth Stewart, Elected Member Relationship Advisor

Subject: Ōtara-Papatoetoe Wastewater Network Limitations

Date: 18 June 2025

Purpose

1. To update the Ōtara-Papatoetoe Local Board on network capacity limitations in their rohe, and what Watercare are doing to resolve these.

Summary

2. Watercare is responsible for delivering safe drinking water and managing wastewater services in Auckland, ensuring public health and environmental protection through an extensive network of pipelines and treatment plants.
3. The capacity of Watercare's drinking water and wastewater networks is limited. When development exceeds this capacity, Watercare sometimes must restrict new housing developments until projects are completed to resolve these limitations.
4. Building infrastructure to meet growth is difficult and dynamic. Challenges include long consent and build times, changing population forecasts, policy changes, and funding constraints.
5. Watercare provides regular updates on bulk network limitations and the projects required to address them, with the most recent update having been 11 June 2025.
6. In November 2024 when Watercare first released network capacity maps, the Ōtara-Papatoetoe area was identified as having a wastewater limitation that was being closely monitored.
7. In the latest June 2025, south Ōtara and Clover Park have been included as a subzone, with no new development to be approved in that zone.

Context

8. Watercare is Auckland's water and wastewater services provider, responsible for delivering safe drinking water and managing wastewater for the region. We provide drinking water by sourcing, treating, and distributing it through an extensive network of pipelines and treatment plants. Our wastewater services then collect, treat, and safely disposing of wastewater to protect public health and the environment.
9. The drinking water and wastewater networks, including the water and wastewater treatment plants, do not have unlimited capacity, and when the amount of development looks like it will exceed the amount of available capacity, then there is a network limitation. Limitations in our water and wastewater networks in turn limit our ability to support new housing developments until we can deliver projects to resolve those limitations.

Memorandum: Ōtara-Papatoetoe Wastewater Network Limitations
18 June 2025

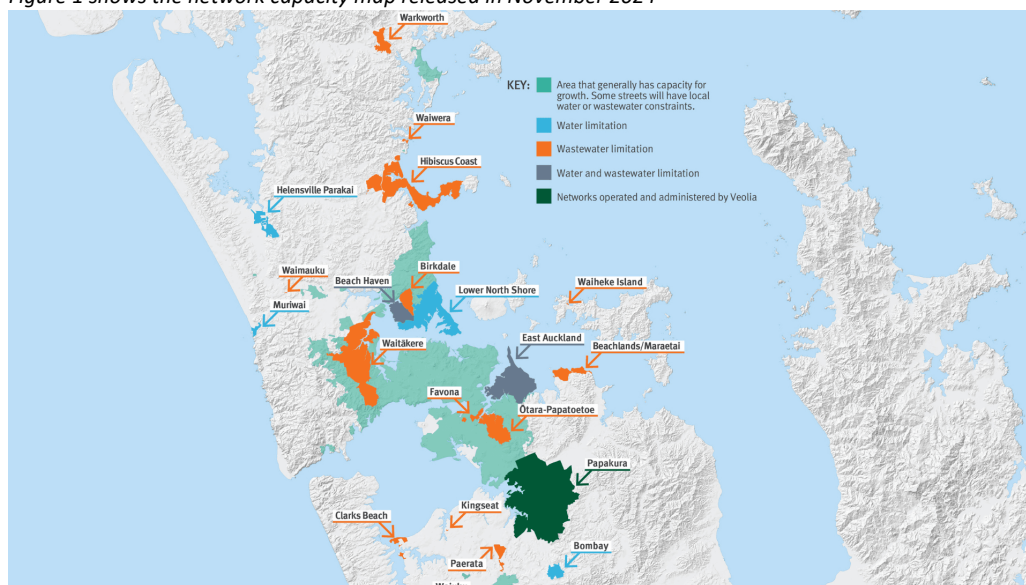
10. Network limitations are divided into local network limitations and bulk network limitations.
11. Limitations to the local network are relatively common and arise when a developer wants to add more properties than can be sustained by the pipes in the immediate area. These are resolved by the developer responsible, at their cost to allow their development to proceed. Resolving local network limitations is relatively straight forward. However, limitations on the bulk network, which includes our treatment plants, are significantly harder to resolve. Resolving limitations on the bulk network require large scale projects requiring significant planning times, consenting and capital investment. When we are referring to network limitations in this memo, we are referring to limitations on the bulk network.
12. Watercare inherited some areas with network limitations when we took over the region's water and wastewater services in 2010. These are generally related to rural treatment plants that serve a very small number of customers on the outskirts of Auckland (for example, Bombay and Muriwai). Watercare has no plans to expand these networks. However, other areas of network limitations exist due to a need for new or upgraded infrastructure.
13. Like Auckland Council and the rest of the Council family, Watercare has a programme for infrastructure provision that aligns with Auckland Council's Future Development Strategy (FDS). This alignment ensures that the provision of new infrastructure or the upsizing of existing infrastructure meets Auckland's growth needs. However, the rapid pace of growth in Auckland and the dynamic legislative environment present ongoing challenges that affect all the Council's planning processes. These challenges include:
 14. The long time it takes to consent, design and build new water and wastewater infrastructure.
 15. Changing population forecasts – over the long delivery timeframes for our infrastructure: sometimes, by the time we are in the construction phase, the growth expectations for an area have changed from what they were when the project was designed and consented.
 16. Changes to planning approaches, policies and frameworks during the development of projects. If the changes affect things like the housing density of an area, our previous designs and permits might not be enough.
 17. We need to be cost efficient, and our services must be affordable – funding is not unlimited. Sometimes we must defer projects to conduct more urgent work, without spending more than we have available.
 18. While we are focused on achieving the outcomes and intent of the FDS, we must prioritise projects that address legislative compliance to protect the health of our customers and the environment over projects that address growth. We acknowledge that often projects address both priorities and that establishing high quality, sustainable and affordable water services for our future customers, is extremely important to the future of Auckland.
 19. Unanticipated or out of sequence growth, associated with the approval of private plan changes, often brings forward development from the expectations outlined in the FDS. They can undermine the planning of all utility providers, including us.
 20. These network limitations were largely identified in 2022 as part of Auckland Council's Proposed Plan Change 78. In November 2024 Watercare provided an update to the 2022 information, including some new areas of limitation. This was to provide greater clarity to developers and the wider community. As part of this we created a map that outlines where Watercare can support growth and where there is limited or no capacity for new water or wastewater connections. As part of this process, we committed to providing updates every six months. We have subsequently updated the maps last week on 11 June 2025, and released on our [website](#).

Memorandum: Ōtara-Papatoetoe Wastewater Network Limitations
18 June 2025

Discussion

21. In November 2024, we advised that in Ōtara-Papatoetoe, development would be limited to a maximum of five additional homes per site. We also encouraged developers to get in touch with us directly. Please see the map below for further detail.

Figure 1 shows the network capacity map released in November 2024

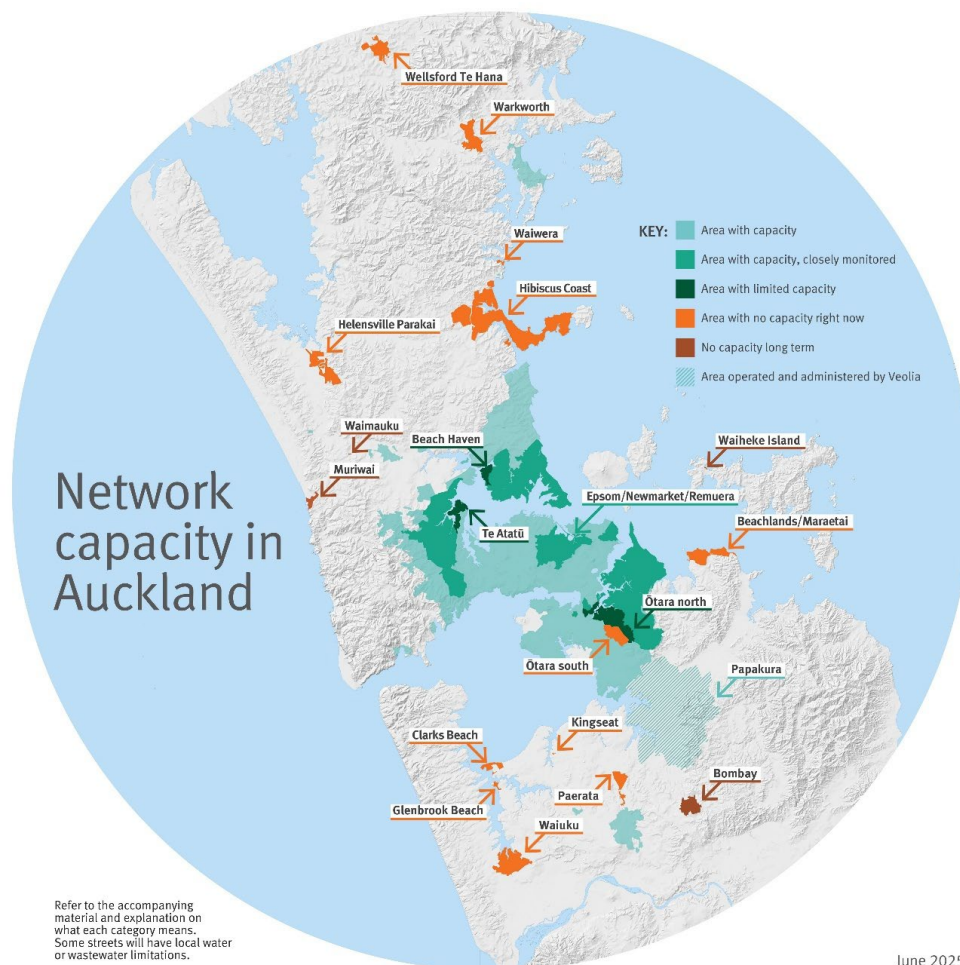


22. Since the November 2024 update, Watercare's Planning teams have been:
- Using the information requested from developers to build a better understanding of future uptake of network capacity.
 - Further interrogating network performance data from across the city to ensure we have the correct areas captured and are applying the right guidelines with the knowledge we hold right now.
 - Considering feedback received regarding how best to provide transparency and future certainty for developers across the city.
23. The update in June 2025 included south Ōtara and Clover Park as a subzone of the previous Ōtara-Papatoetoe catchment. Watercare will not be approving any new development in this area. The updated capacity map dated June 2025 is shown on the following page under Figure 2.
24. Watercare developed a map of projects that will increase wastewater network capacity in Ōtara. This is included as Appendix A to this memo. Note: Whilst there are no overall bulk drinking water supply constraints in this area, there may be localised constraints. We encourage all developers to contact Watercare early to identify and address any potential issues.
25. Projects to increase wastewater network capacity include:
- Otara local wastewater network upgrades
 - Otara catchment wastewater capacity upgrades
 - Otara pump station upgrades
 - Otara branch sewer upgrades
 - Duplication of the Eastern and Southern Interceptors

Memorandum: Ōtara-Papatoetoe Wastewater Network Limitations
18 June 2025

26. Watercare will also consider the output of our [Metropolitan Servicing Strategy](#) work and the wider wastewater balance for Auckland. This will guide us in how we will deliver wastewater services across the whole of Auckland into the future. It will allow us to complete our plans for upgrades at the Mangere Wastewater Treatment Plant, other wastewater treatment plants, and the bulk networks. A program of wastewater treatment plant upgrades and optimisation projects will be implemented over the next decade.

Figure 2 shows the updated network capacity map released in June 2025

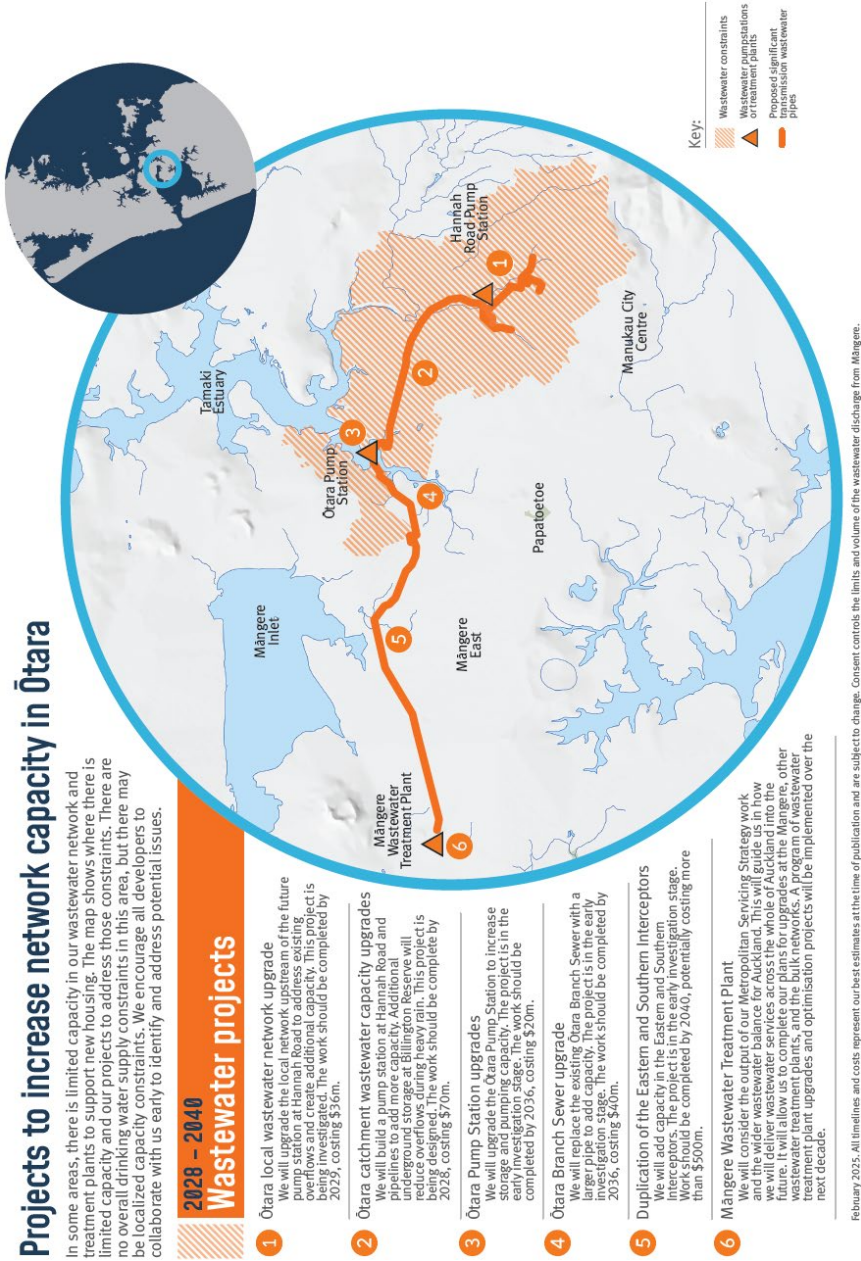


Next Steps

27. Watercare will continue to keep elected members informed, following a 'no surprises' approach.
28. Network capacity will be monitoring closely and reviewed regularly by Watercare.
29. We will share progress on key upgrade projects in Ōtara as they become available and provide further detail or briefings on request.
30. Developers are being advised to engage with Watercare early in their planning process, and we welcome any support from elected members in reinforcing this message.



Appendix A



February 2025. All timelines and costs represent our best estimates at the time of publication and are subject to change. Consent controls the limits and volume of the wastewater discharge from Māngere.



Otara-Papatoetoe Buckland Road pedestrian crossing upgrade

Local Board Transport Capital Fund project

1/7/2025

Think before you print



Purpose of Today

- Recap of Local Board Resolution
- Other issues in the vicinity and joint project opportunity
- Discuss design options
- Gain Local Board's direction on the preferred option
- Next steps



Local Board Resolution

15 Local Board Transport Capital Fund Projects 2025-2026

Resolution number OP/2025/32

MOVED by Chairperson AR Autagavaia, seconded by Member O Dewes, MNZM:

That the Ōtara-Papatoetoe Local Board:

- i) whakamana / authorise Auckland Transport to complete the Wyllie/Kenderdine Road pedestrian improvements project in the current programme with additional required funding of \$30,000 for recommended option 3.3.
- ii) whakamana / allocate \$250,000 towards Papatoetoe North School improvement.
- iii) whakamana / allocate \$250,000 towards Woburn Street/Portage Road intersection upgrade.
- iv) whakamana / allocate \$200,000 towards Kolmar Road Pedestrian improvements.
- v) whakamana / allocate \$381,394 towards Buckland Road pedestrian crossing.
- vi) whakaee / approve as its first priority, that any cost savings from its currently active local board transport capital fund projects and/or any new additional funding that becomes available be applied to its active projects if they require additional funding to complete within the current 3-year local board programme.
- vii) whakaee / approve as its second priority, that any further cost savings from the completion of its currently active local board transport capital fund projects and/or any new additional funding that becomes available, be applied to these projects:
 - a. Ravena Way /Flat Bush intersection pedestrian improvement with a cost estimate of \$150,000.
 - b. Ngāti Ōtara Park pathways with a cost estimate of \$1,357,090



CARRIED



